

State of New York
DEPARTMENT OF CORRECTIONS
AND COMMUNITY SUPERVISION

Building Number 2
Harriman Office Campus
Albany, New York 12226

UNDER CUSTODY REPORT:

**Profile of Inmate Population
Under Custody on January 1, 2011**



Andrew M. Cuomo
Governor



Brian Fischer
Commissioner

**Profile of Inmate Population
Under Custody on January 1, 2011**

Table of Contents

	<u>Page</u>
Table of Contents.....	i
Executive Summary.....	ii
Introduction.....	1
Section 1: Demographic Characteristics	
Gender.....	2
Age.....	2
Race/Ethnic Status.....	3
Region of Commitment.....	4
World Region of Birth.....	5
Marital Status.....	6
Number of Living Children.....	7
Religious Affiliation.....	8
Veteran Status.....	9
Section 2: Criminal History	
Minimum Sentence.....	10
Maximum Sentence.....	11
Commitment Crime.....	12
Second Felony Sentencing Status.....	14
Prior Adult Criminal Record.....	16
Length of Time Served in Department Custody.....	17
Time to Earliest Release.....	18
Determinate Sentencing.....	19

Profile of Inmate Population Under Custody on January 1, 2011

Executive Summary

Characteristics	Category	Total Under Custody
Population January 1, 2011		56,315
Gender	Male	96.1%
Age	Average Age	37.3
Race/Ethnic Status	White	22.4%
	African-American	50.5%
	Hispanic	24.9%
Region	New York City	48.3%
	Suburban New York	11.6%
	Upstate Urban	23.7%
	Upstate Other	16.4%
World Region of Birth	Foreign Born	10.5%
Marital Status	Never Married	65.4%
Living Children	One or more living children	59.5%
Religious Affiliation	Catholic	24.8%
	Protestant	28.9%
	Islam	11.7%
Veteran Status	Veteran	4.8%
Minimum Sentence	Median time in months	62.0
	Average time in months	116.7
Maximum Sentence	Median time in months	84.0
	Average time in months	140.5
Crime	Violent Felony	62.9%
	Other Coercive	8.0%
	Drug Offenses	15.4%
	Property/Other	11.8%
	Youthful/Juvenile	1.9%
Second Felony Offender Status	First Felony	55.4%
	Second Felony	40.2%
	Persistent Felony	4.3%
Prior Adult Criminal Record	No Prior Arrest	15.8%
	No Prior Conviction	8.0%
	Conviction No Jail	18.1%
	Prior Jail	24.2%
	Prior prison term	33.9%
Time Served in Department Custody	Median time in months	25.3
	Average time in months	59.0
Time to Earliest Release Date	Median time in months	14.8
	Average time in months	48.3
Determinate Sentence	Total	54%
	Drug Offenses	85%
	Violent Felony	64%

Profile of Inmate Population Under Custody on January 1, 2011

INTRODUCTION

Purpose of the Report

This report profiles the inmate population by demographic and criminal history characteristics. It presents information on inmates held under Department of Correctional Services (DOCS) custody on January 1, 2011. On April 1, 2011 the Department of Correctional Services was merged with the Division of Parole to form a new agency called, the Department of Corrections and Community Services.

Sections of the Report

The first section describes the demographic characteristics of inmates, including gender, age, race/ethnic status, region of commitment, birthplace, marital status, number of living children, religious affiliation, and veteran status. The second section describes the criminal history of inmates, including information on minimum sentence, maximum sentence, commitment crime, second felony sentencing status, prior adult criminal record, length of time served at current facility, length of time in Department custody, time to earliest release, and determinant sentencing status.

Section One

DEMOGRAPHIC CHARACTERISTICS

Gender Distribution

There were 56,315 inmates under custody on January 1, 2011. Of this total, 54,109 (96.1%) were male and 2,206 (3.9%) were female. This is a drop of 2,063 (4%) total inmates since last year's report; the number of male inmates decreased 1,789 (3%) and female inmates decreased 274 (11%).

Age Distribution

The average age of offenders under DOCS custody on January 1, 2011 was 37 years old. The average age for female inmates was slightly higher and this is reflected in the age distribution. The largest group of inmates for male inmates was 30-39 age range and for female inmates 40-49 age range.

Inmates under 21 years old constituted 5% of the total under custody population while inmates 60 and over represented 3% of the inmate population.

Figure 1. Inmate Age

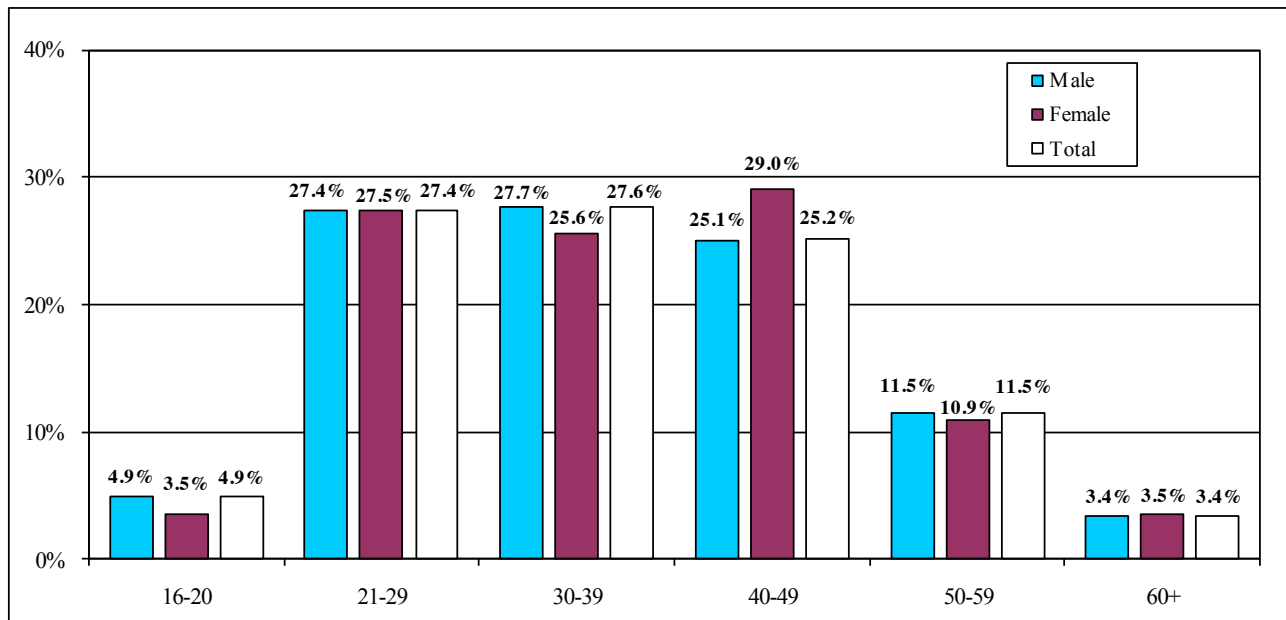


Table 1. Inmate Age, Under Custody Population on January 1, 2011

Gender	16-20	21-29	30-39	40-49	50-59	60+	Total	Average
Male	2,675	14,802	15,002	13,555	6,235	1,840	54,109	37.3
Female	78	606	565	640	240	77	2,206	37.6
Total	2,753	15,408	15,567	14,195	6,475	1,917	56,315	37.3
Male	4.9%	27.4%	27.7%	25.1%	11.5%	3.4%	100.0%	
Female	3.5%	27.5%	25.6%	29.0%	10.9%	3.5%	100.0%	
Total	4.9%	27.4%	27.6%	25.2%	11.5%	3.4%	100.0%	

Race/Ethnic Distribution

Over half (51%) of the inmates under custody on January 1, 2011, were African-American, a quarter were Hispanic (25%) and about a fifth were White (22%). The female inmate population had a larger proportion of Whites (36%) than the male inmate population (22%).

Figure 2. Race/Ethnic Status

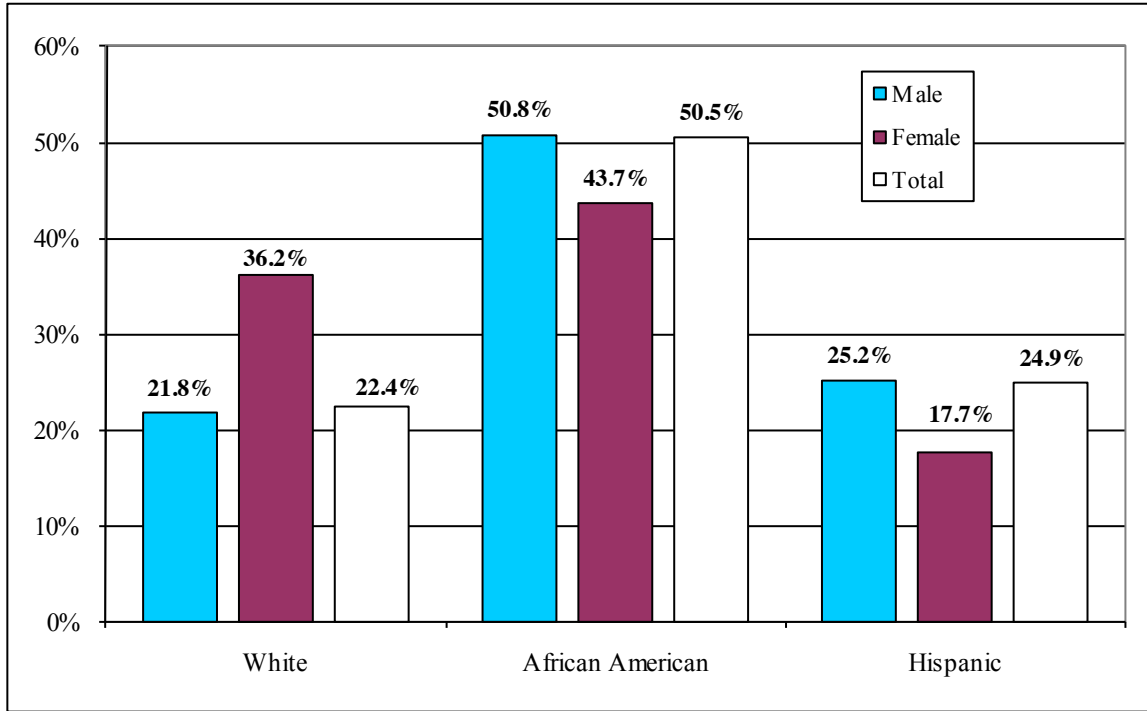


Table 2. Race/Ethnic Status; Under Custody Population on January 1, 2011

Race/ethnic Status by Gender	White	African American	Hispanic	Native American	Asian	Other	Unknown	Total
Male	11,811	27,494	13,623	322	252	304	303	54,109
Female	799	965	391	14	14	8	15	2,206
Total	12,610	28,459	14,014	336	266	312	318	56,315
Male	21.8%	50.8%	25.2%	0.6%	0.5%	0.6%	0.6%	100.0%
Female	36.2%	43.7%	17.7%	0.6%	0.6%	0.4%	0.7%	100.0%
Total	22.4%	50.5%	24.9%	0.6%	0.5%	0.6%	0.6%	100.0%

Region of Commitment

Approximately half (48%) of the inmates under custody on January 1, 2011, were committed from New York City and 12% were committed from suburban New York (Nassau, Rockland, Suffolk, and Westchester counties). Upstate counties with a population center containing 50,000 inhabitants or more (Albany, Broome, Erie, Monroe, Oneida, Onondaga, Niagara, Rensselaer, and Schenectady counties) comprised 24% of the inmate population. The remaining 16% were sentenced from the other Upstate counties.

Figure 3. Region of Commitment

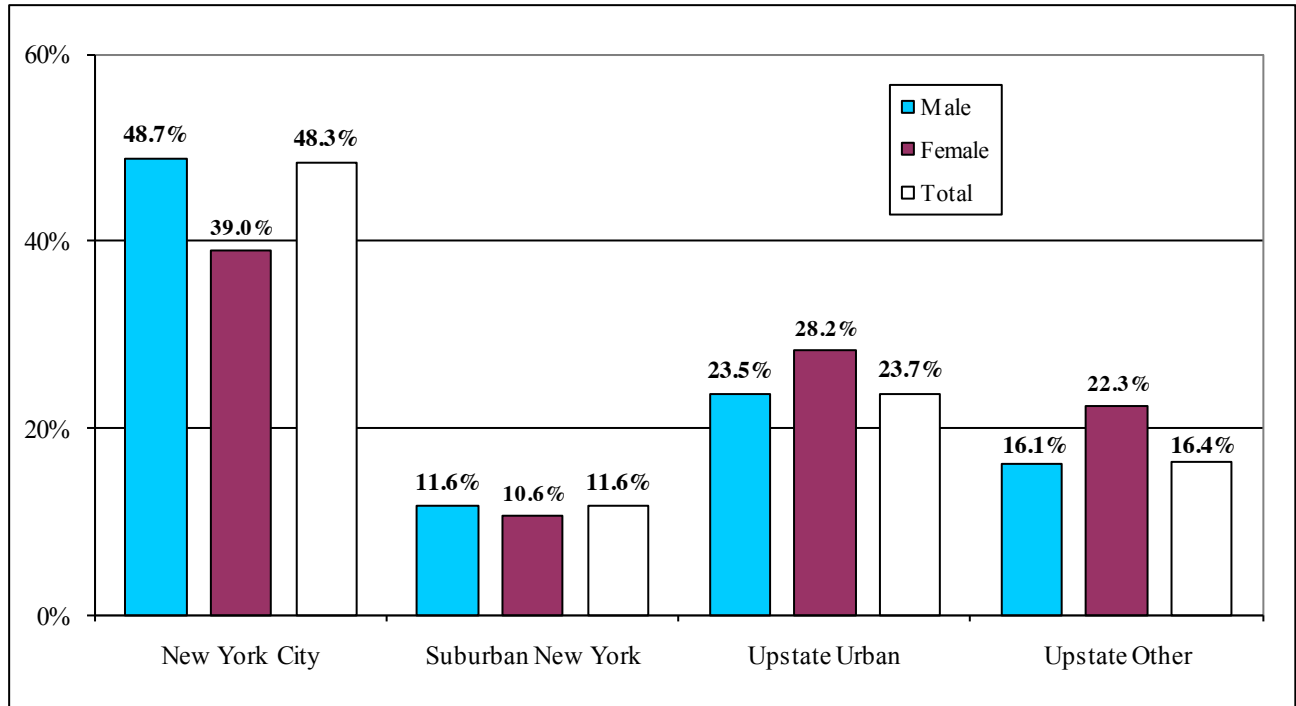


Table 3. Region of Commitment; Under Custody Population January 1, 2011

Region by Gender	New York City	Suburban New York	Upstate Urban	Upstate Other	Total*
Male	26,365	6,290	12,720	8,734	54,109
Female	859	233	622	491	2,205
Total	27,224	6,523	13,342	9,225	56,314
Male	48.7%	11.6%	23.5%	16.1%	100.0%
Female	39.0%	10.6%	28.2%	22.3%	100.0%
Total	48.3%	11.6%	23.7%	16.4%	100.0%

*One case missing, out of state inmate.

World Region of Birth

Eighty-nine percent (89%) of under custody inmates were born in the United States or a United States Territory. Approximately eleven percent or 5,930 of under custody inmates report birth in a foreign country. Most of these inmates reporting birth in a foreign country were from one of the island nations in the Caribbean basin.¹

Figure 4. Foreign Born Inmates Under Custody Population January 1, 2011

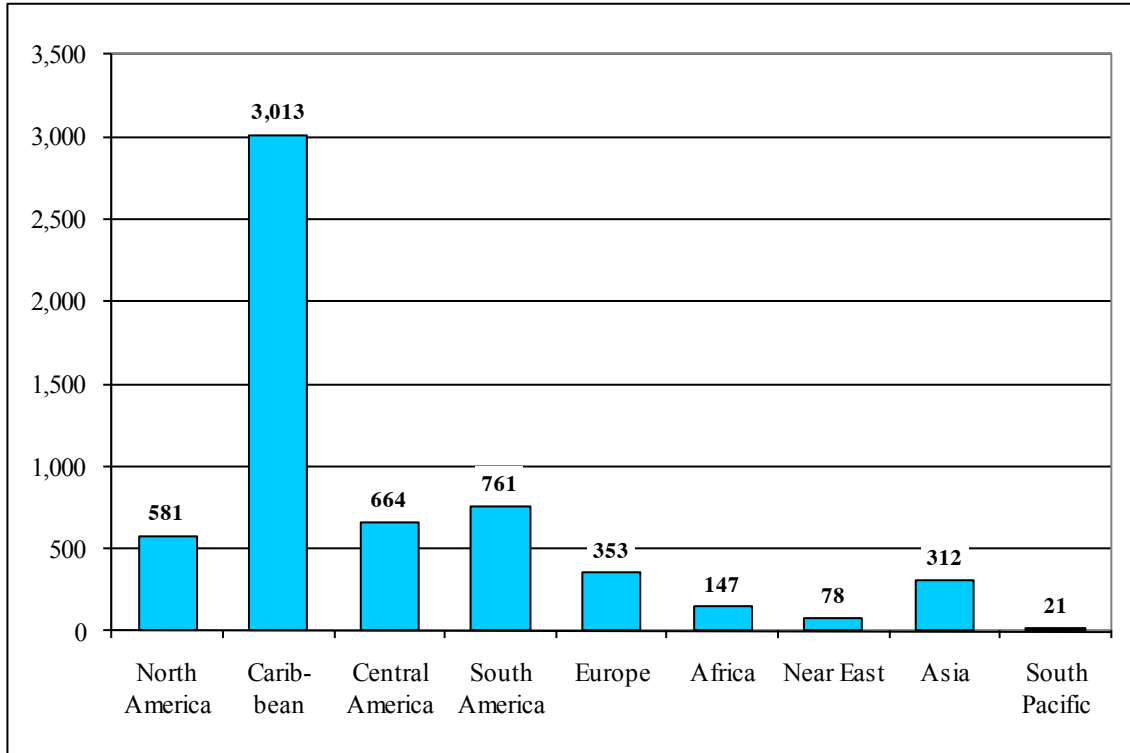


Table 4. World Region of Birth; Under Custody Population January 1, 2011

United States*	North America	Caribbean	Central America	South America	Europe	Africa	Near East	Asia	South Pacific	Not Known	Total
50,230	581	3,013	664	761	353	147	78	312	21	155	56,315
89.2%	1.0%	5.4%	1.2%	1.4%	0.6%	0.3%	0.1%	0.6%	0.0%	0.3%	100.0%

* Includes offenders committed from United States Territories.

1. For additional information on foreign born inmates see "The Foreign Born Under Custody Population and the Institutional Removal Program" (2010), New York State Department of Correctional Services, Albany, New York 12226. On the DOCS web site at: <http://www.docs.state.ny.us/Research/annotate.asp#foreign>

Marital Status

Two thirds (65%) of the inmate population report never being married.

Figure 5. Marital Status

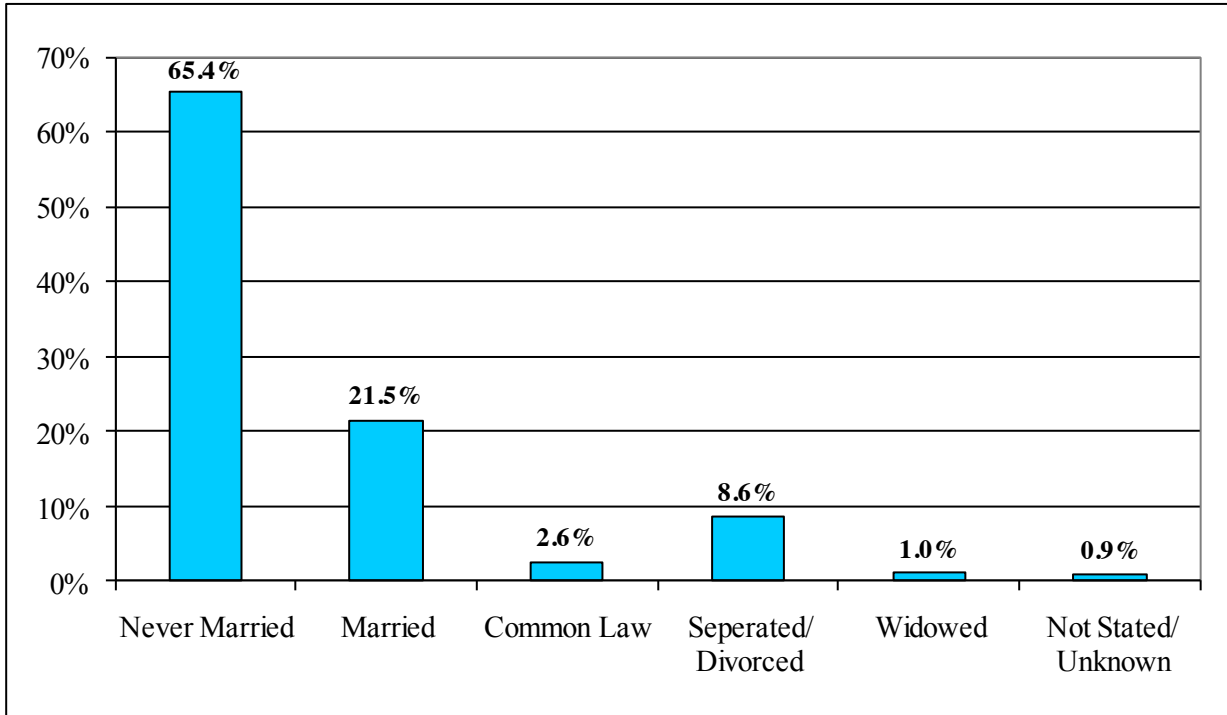


Table 5. Marital Status; Under Custody Population January 1, 2011

Marriage Status	Never Married	Married	Common Law	Separated/Divorced	Widowed	Not Stated/Unknown	Total
Male	35,417	11,689	1,429	4,607	497	470	54,109
Female	1,437	415	14	236	78	26	2,206
Total	36,854	12,104	1,443	4,843	575	496	56,315
Male	65.5%	21.6%	2.6%	8.5%	0.9%	0.9%	100.0%
Female	65.1%	18.8%	0.6%	10.7%	3.5%	1.2%	100.0%
Total	65.4%	21.5%	2.6%	8.6%	1.0%	0.9%	100.0%

Number of Living Children

The majority of inmates under custody (60%) self-reported at the time of admission to the Department that they had at least one living child.

Figure 6. Inmates With One or More Living Children

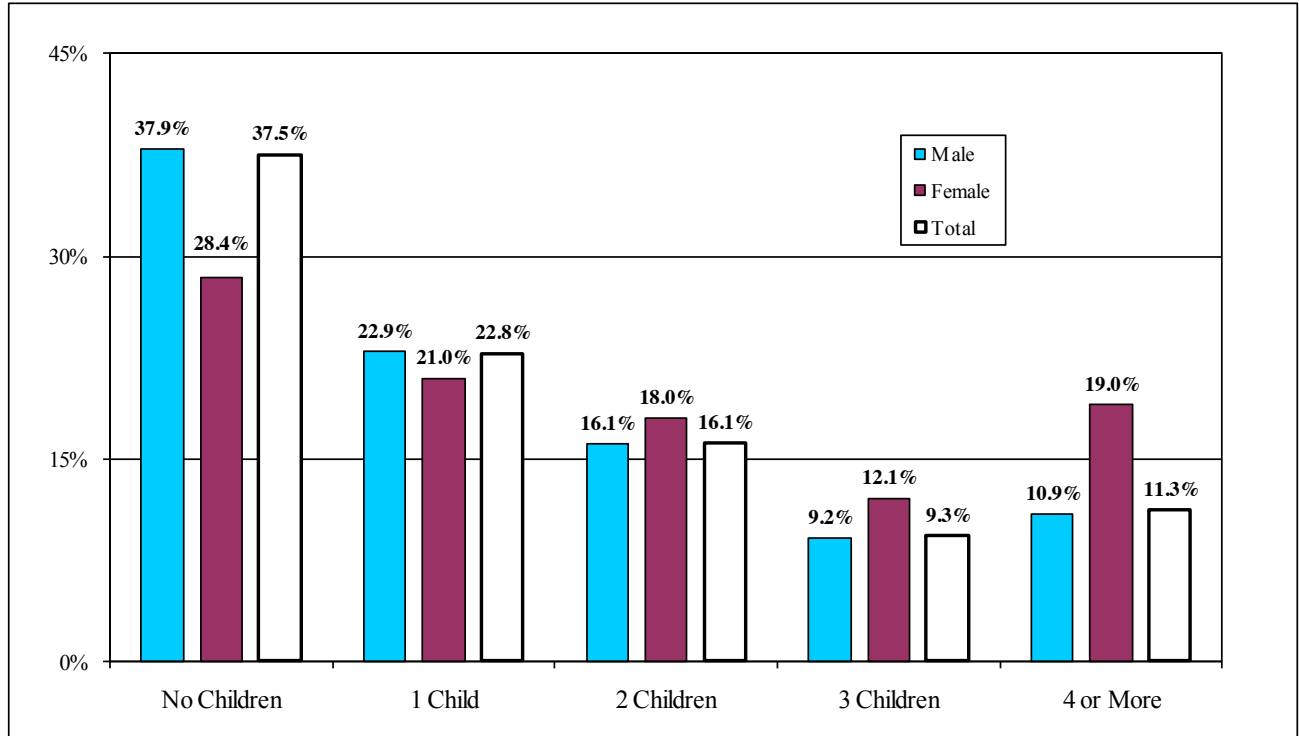


Table 6. Number of Children; Under Custody Population January 1, 2011

Children by Gender	No Children	1 Child	2 Children	3 Children	4 or More	Unknown	Total
Male	20,504	12,401	8,694	4,969	5,917	1,624	54,109
Female	626	463	398	267	419	33	2,206
Total	21,130	12,864	9,092	5,236	6,336	1,657	56,315
Male	37.9%	22.9%	16.1%	9.2%	10.9%	3.0%	100.0%
Female	28.4%	21.0%	18.0%	12.1%	19.0%	1.5%	100.0%
Total	37.5%	22.8%	16.1%	9.3%	11.3%	2.9%	100.0%

Religious Affiliation

Eighty-six percent (86%) of under custody inmates reported affiliation with a recognized religion. Twenty-nine percent (29%) were Protestant, 25% were Catholic, 12% were Islam, 21% other faiths, and 14% did not report affiliation with a religious faith.

Figure 7. Religious Affiliation

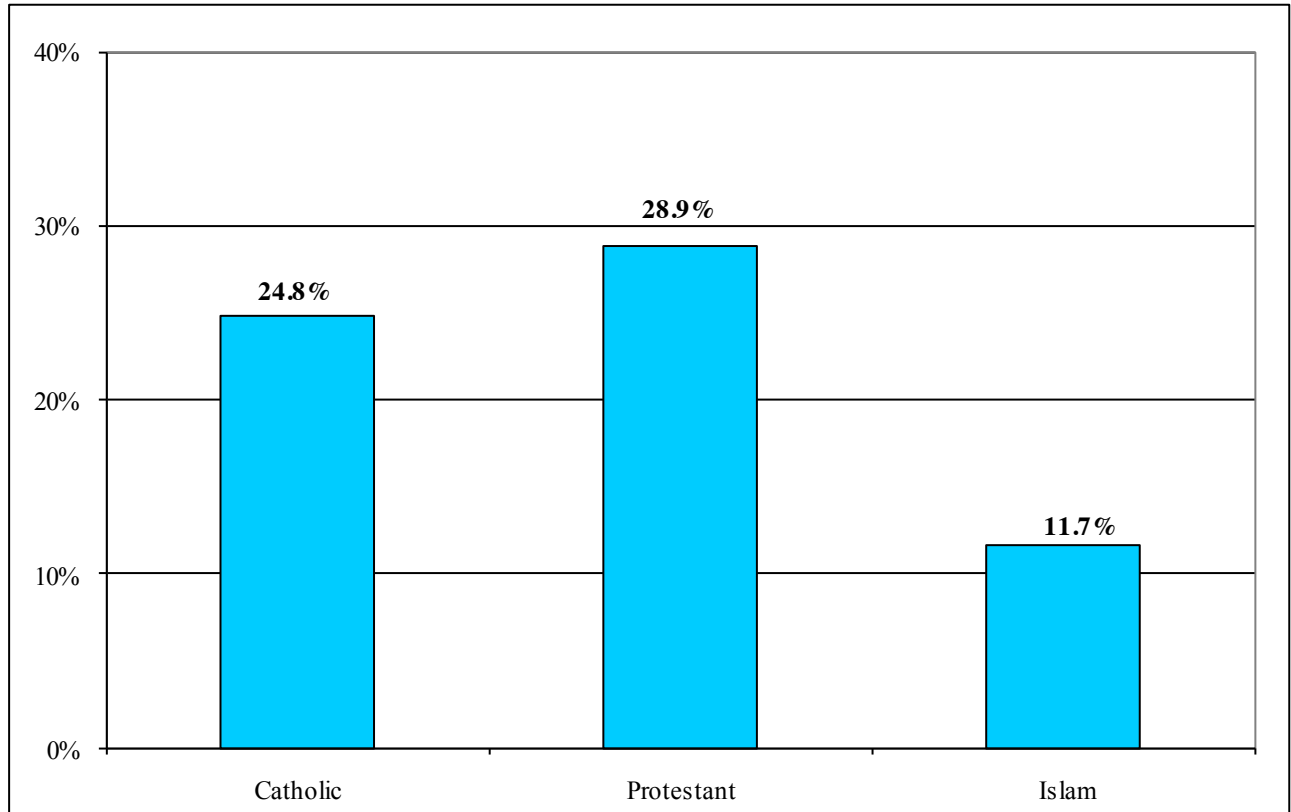


Table 7. Religious Affiliation; Under Custody January 1, 2011

Catholic	Protes - tant	Islam	Nation of Islam	Rasta- farian	Jewish	Asian Religions	Native American	Greek Orthodox	Other	None Listed	Total
13,969	16,250	6,582	2,334	3,505	3,569	348	431	65	1,520	7,742	56,315
24.8%	28.9%	11.7%	4.1%	6.2%	6.3%	0.6%	0.8%	0.1%	2.7%	13.7%	100.0%

Veteran Status

Of the 56,315 inmates under custody on January 1, 2011, 5% (2,713) reported military service. Of this total, the largest number claimed military service in the Post-Vietnam Era (May 1975 to August 1990).

Figure 8. Inmate Veterans by Military Service Era

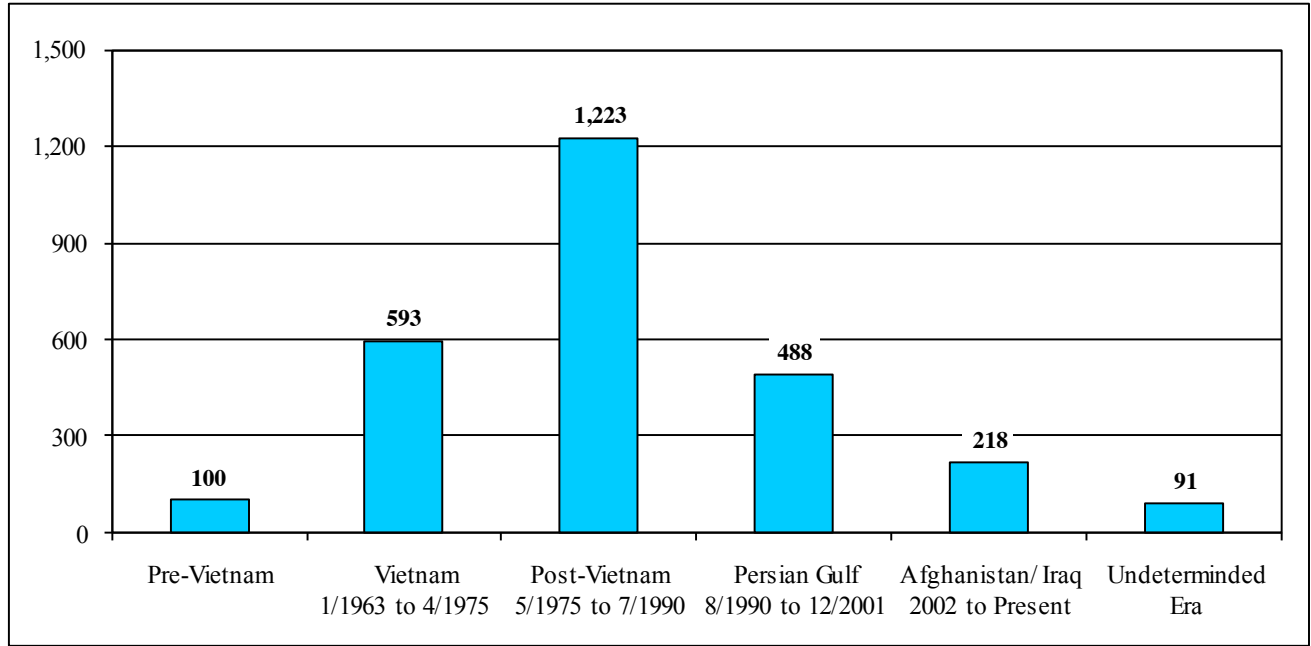


Table 8. Veteran Status by Service Era; Under Custody Population January 1, 2011

Not-Veteran	Pre-Vietnam	Vietnam 1/1963 To 4/1975	Post-Vietnam 5/1975 to 7/1990	Persian Gulf 8/1990 to 12/2001	Afghanistan/ Iraq 2002 to Present	Undeter- mined Era	Total
53,602	100	593	1,223	488	218	91	56,315
95.2%	0.2%	1.1%	2.2%	0.9%	0.4%	0.2%	100.0%

Section Two

CRIMINAL HISTORY

Minimum Sentence

The median minimum sentence of under custody inmates was more than 5 years. However, the average minimum sentence length was nine and a half years, reflecting the influence of lengthy minimum terms of many inmates.

Current sentencing laws in New York require an offender convicted of certain crimes to receive a determinate sentence. Determinate sentences require an inmate to serve a minimum of 6/7 of the determinate sentence imposed by the judge before being eligible for release. An offender committed for a crime not designated as having a determinate sentence has a minimum sentence set by the court.

As of January 1, 2011, there were 223 inmates under custody who were serving sentences of “Life Without Parole”. In calculating the average minimum sentence length, “Life Without Parole” cases were given a value of 45 years or 540 months.

Figure 10. Minimum Sentence Length

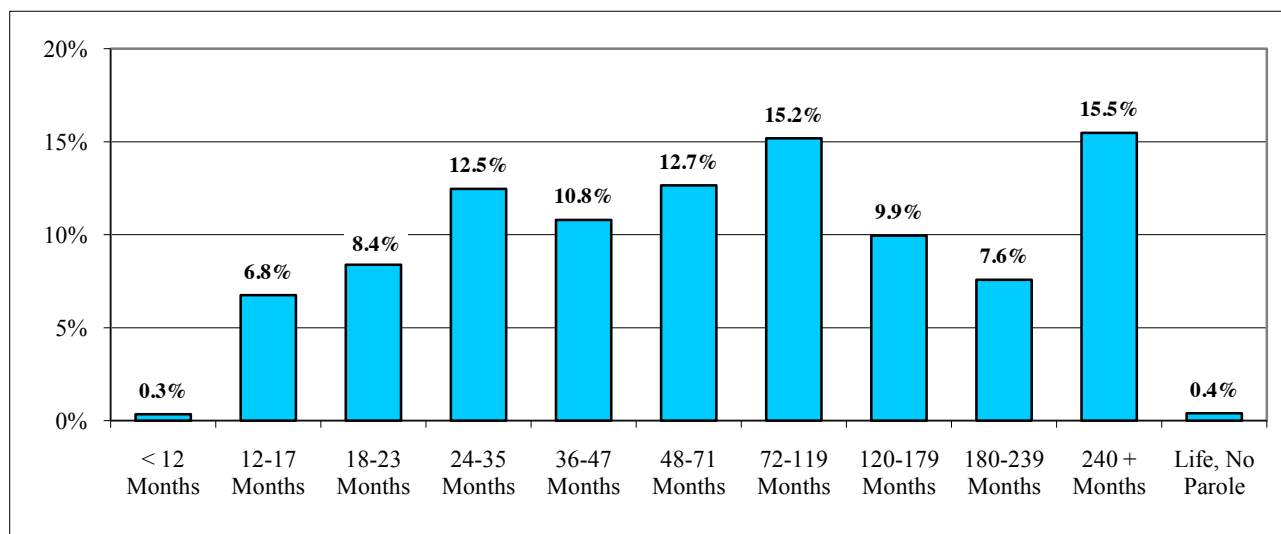


Table 10. Minimum Sentence; Under Custody Population January 1, 2011

Minimum Sentence	< 12 Months	12-17 Months	18-23 Months	24-35 Months	36-47 Months	48-71 Months	72-119 Months	120-179 Months	180-239 Months	240+ Months	Life, No Parole	Total
Male	168	3,531	4,429	6,650	5,804	6,830	8,322	5,477	4,145	8,536	217	54,109
Female	26	273	299	374	275	299	231	124	121	178	6	2,206
Total	194	3,804	4,728	7,024	6,079	7,129	8,553	5,601	4,266	8,714	223	56,315
	0.3%	6.8%	8.4%	12.5%	10.8%	12.7%	15.2%	9.9%	7.6%	15.5%	0.4%	100.0%
In Months	<u>Average</u>	<u>Median</u>				<u>Average</u>	<u>Median</u>			<u>Average</u>	<u>Median</u>	
Male	118.3	62.0				Female	75.9	36.0		Total	116.7	62.0

Maximum Sentence

The median maximum sentence of under custody inmates was 7 years. However, the average maximum sentence length was eleven and a half years, reflecting the influence of lengthy maximum terms of many inmates.

Average maximum sentences for women (102 months) were 39 months shorter than for men (141 months). Median maximum sentences for women (60 months) were 24 months shorter than for men (84 months).

In calculating the average maximum sentence length, "Life Without Parole" cases were given a value of 45 years or 540 months, and Life maximum cases were given a value of 25 years or 300 months.

Figure 11. Maximum Sentence Length

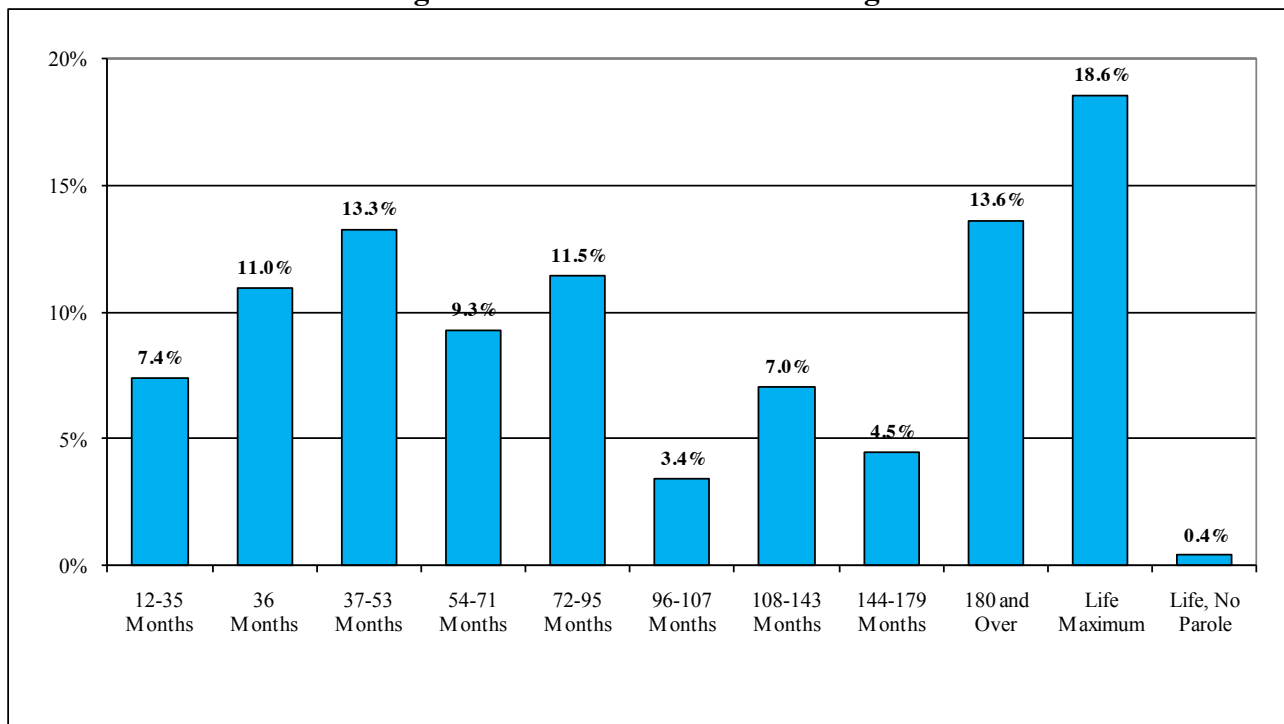


Table 11. Maximum Sentence Length; Under Custody Population January 1, 2011

Maximum Sentence	12-35 Months	36 Months	37-53 Months	54-71 Months	72-95 Months	96-107 Months	108-143 Months	144-179 Months	180 and Over	Life Maximum	Life, No Parole	Total		
Male	3,911	5,780	7,138	5,033	6,168	1,871	3,816	2,455	7,495	10,225	217	54,109		
Female	270	387	346	199	282	58	154	78	189	237	6	2,206		
Total	4,181	6,167	7,484	5,232	6,450	1,929	3,970	2,533	7,684	10,462	223	56,315		
Total	7.4%	11.0%	13.3%	9.3%	11.5%	3.4%	7.0%	4.5%	13.6%	18.6%	0.4%	100.0%		
In Months	<u>Average</u>	<u>Median</u>				<u>Average</u>	<u>Median</u>				<u>Average</u>	<u>Median</u>		
Male	140.5	84.0				Female	101.8	60.0				Total	140.5	84.0

Commitment Crime

Almost 63% of the inmates under custody on January 1, 2011, were serving a sentence for a Violent Felony Offense (VFO). Another 15% of inmates were serving a sentence for a Drug crime. Forty-six percent (46%) of female inmates were serving a sentence for a VFO compared to 64% for male inmates. In contrast, 24% of female inmates were sentenced for a property or other crime compared to 11% percent of male inmates. Table 12B lists the commitment crimes that are included in each of the general categories in figure 12.

Table 12. Minimum Sentence; Under Custody Population January 1, 2011

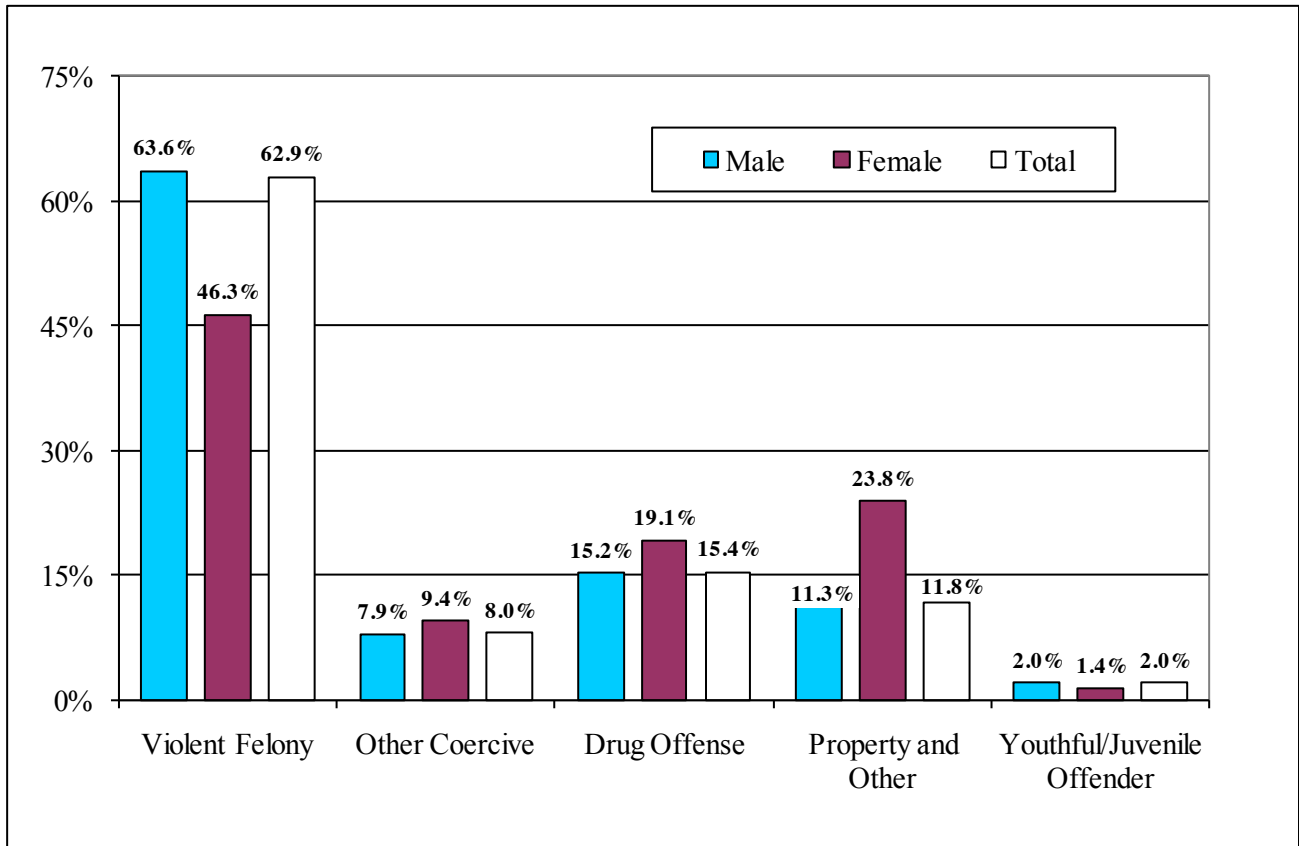


Table 12A. Crime Category; Under Custody Population January 1, 2011

Commitment Crime Type by Gender	Violent Felony	Other Coercive	Drug Offense	Property and Other	Youthful Offender	Juvenile Offender	Total
Male	34,405	4,284	8,242	6,104	887	187	54,109
Female	1,021	207	422	526	29	1	2,206
Total	35,426	4,491	8,664	6,630	916	188	56,315
Male	63.6%	7.9%	15.2%	11.3%	1.6%	0.3%	100.0%
Female	46.3%	9.4%	19.1%	23.8%	1.3%	0.0%	100.0%
Total	62.9%	8.0%	15.4%	11.8%	1.6%	0.3%	100.0%

Table 12B. By VFO and Crime; Under Custody Population January 1, 2011

VFO BY CRIME	MALE	FEMALE	TOTAL
VIOLENT FELONY			
MURDER	7,225	215	7,440
ATTEMPTED MURDER	1,376	23	1,399
MANSLT 1ST,AG 2ND	2,041	156	2,197
RAPE 1ST	1,810	4	1,814
ROBBERY 1ST	4,601	97	4,698
ROBBERY 2ND	3,116	96	3,212
ASSAULT 1ST	1,876	108	1,984
ASSAULT 2ND	1,382	86	1,468
BURGLARY 1ST	1,058	28	1,086
BURGLARY 2ND	3,402	108	3,510
ARSON 1ST,2ND	180	24	204
SODOMY 1ST	1,141	5	1,146
SEX AB 1ST,AG.2	1,201	8	1,209
WEAPONS OFFENSES	3,286	36	3,322
KIDNAPPING 1ST,2ND	352	18	370
OTHER VFO SEX OFF	295	4	299
OTHER VIOLENT	63	5	68
SUBTOTAL	34,405	1,021	35,426
	97.1%	2.9%	100.0%
OTHER COERCIVE			
MANSLAUGHTER 2ND	268	48	316
OTHER HOMICIDE	120	23	143
ROBBERY 3RD	1,297	42	1,339
ATT ASSAULT 2ND	459	26	485
CONSPIRACY 2,3,4	223	14	237
OTHER WEAPONS	621	12	633
OTHER SEX OFFENSES	831	17	848
OTHER COERCIVE	465	25	490
SUBTOTAL	4,284	207	4,491
	95.4%	4.6%	100.0%
DRUG OFFENSES			
DRUG SALE	4,534	273	4,807
DRUG POSSESSION	3,708	149	3,857
SUBTOTAL	8,242	422	8,664
	95.1%	4.9%	100.0%
PROPERTY AND OTHER OFFENSES			
BURGLARY 3RD	1,953	55	2,008
GRAND LARCENY	1,166	194	1,360
FORGERY	400	97	497
STOLEN PROPERTY	407	32	439
DRIVE INTOXICATED	873	59	932
CONTEMPT 1ST	368	6	374
ALL OTHER FELONIES	937	83	1,020
SUBTOTAL	6,104	526	6,630
	92.1%	7.9%	100.0%
YO & JO			
YOUTHFUL OFFENDER	887	29	916
JUVENILE OFFENDER	187	1	188
SUBTOTAL	1,074	30	1,104
	97.3%	2.7%	100.0%
GRAND TOTAL	54,109	2,206	56,315
	96.1%	3.9%	100.0%

Second Felony Offender Status

Over half (55%) of the inmates under custody on January 1, 2011, were sentenced as first felony offenders. Crime by predicate felony sentencing status is presented in Table 13A.

New York State Penal Law establishes more severe sentences for second felony offenders than for first felony offenders. It should be noted that some inmates included among the individuals sentenced as first felony offenders were convicted of prior felony crimes and some even had previous sentences to state prison. The majority of such inmates were convicted of class A-1 violent felony crimes, which do not permit sentencing as a second felony offender since the penalties for A-1 violent felony crimes are already the most severe.

Figure 13. Predicate Felony Sentencing Status

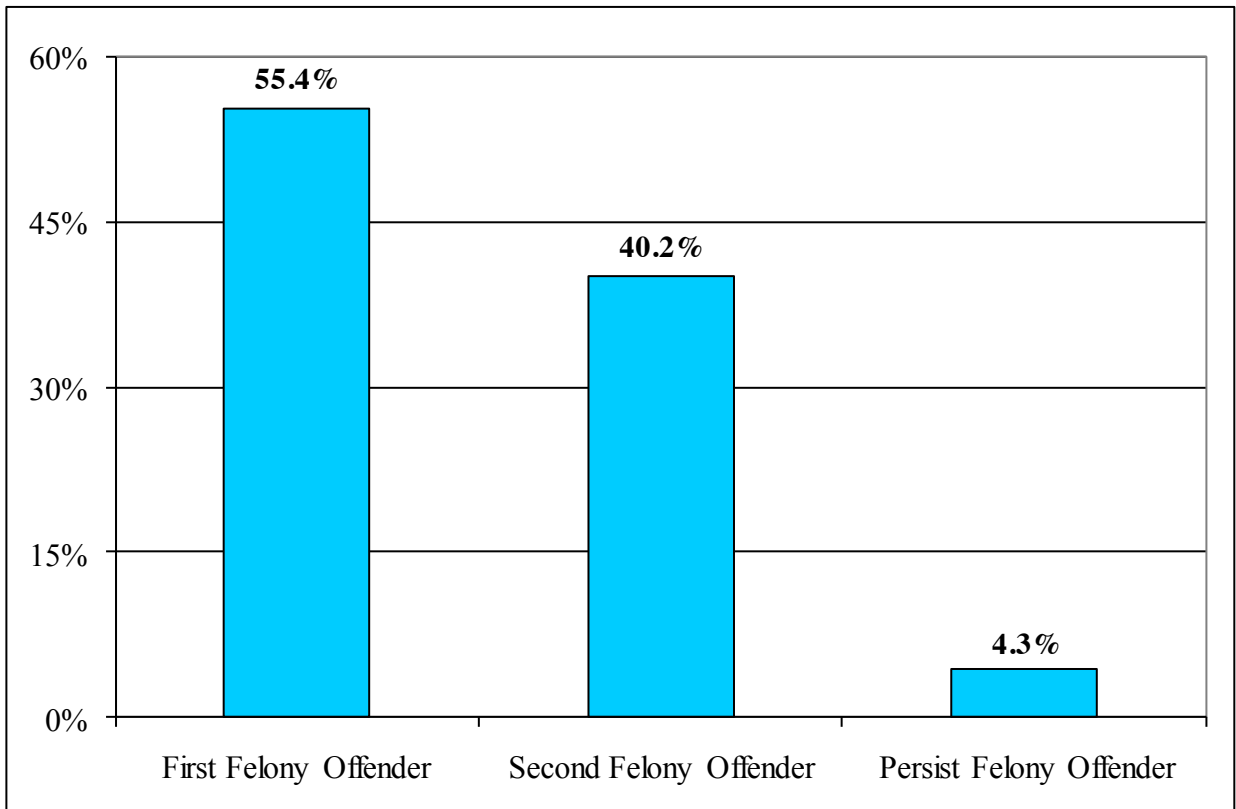


Table 13A. Second Felony Sentencing Status by VFO and Crime;
Under Custody Population January 1, 2011

VFO BY CRIME	FIRST FELONY OFFENDER	SECOND FELONY OFFENDER	PERSIST FELONY OFFENDER	TOTAL
VIOLENT FELONY				
MURDER	7,440	0	0	7,440
ATTEMPTED MURDER	924	418	57	1,399
MANSLT 1ST,AG 2ND	1,646	503	48	2,197
RAPE 1ST	1,075	609	130	1,814
ROBBERY 1ST	2,128	2,039	531	4,698
ROBBERY 2ND	1,567	1,282	363	3,212
ASSAULT 1ST	1,254	638	92	1,984
ASSAULT 2ND	734	623	111	1,468
BURGLARY 1ST	539	453	94	1,086
BURGLARY 2ND	1,285	1,667	558	3,510
ARSON 1ST,2ND	142	62	0	204
SODOMY 1ST	803	292	51	1,146
SEX AB 1ST,AG.2	901	271	37	1,209
WEAPONS OFFENSES	1,836	1,326	160	3,322
KIDNAPPING 1ST,2ND	275	77	18	370
OTHER VFO SEX OFF	225	70	4	299
OTHER VIOLENT	53	12	3	68
SUBTOTAL	22,827 64.4%	10,342 29.2%	2,257 6.4%	35,426 100.0%
OTHER COERCIVE				
MANSLAUGHTER 2ND	242	68	6	316
OTHER HOMICIDE	120	21	2	143
ROBBERY 3RD	387	925	27	1,339
ATT ASSAULT 2ND	127	356	2	485
CONSPIRACY 2,3,4	118	113	6	237
OTHER WEAPONS	128	486	19	633
OTHER SEX OFFENSES	594	246	8	848
OTHER COERCIVE	248	237	5	490
SUBTOTAL	1,964 43.7%	2,452 54.6%	75 1.7%	4,491 100.0%
DRUG OFFENSES				
DRUG SALE	1,263	3,532	12	4,707
DRUG POSSESSION	1,255	2,596	6	3,857
SUBTOTAL	2,518 29.1%	6,128 70.7%	18 0.2%	8,664 100.0%
PROPERTY AND OTHER OFFENSES				
BURGLARY 3RD	572	1,410	26	2,008
GRAND LARCENY	462	879	19	1,360
FORGERY	135	359	3	497
STOLEN PROPERTY	82	346	11	439
DRIVE INTOXICATED	909	19	4	932
CONTEMPT 1ST	146	224	4	374
ALL OTHER FELONIES	503	505	12	1020
SUBTOTAL	2,809 42.4%	3,742 56.4%	79 1.2%	6,630 100.0%
YOUTHFUL & JUVENILE OFFENDER				
YOUTHFUL OFFENDER	916	0	0	916
JUVENILE OFFENDER	188	0	0	188
SUBTOTAL	1,104 100.0%	0 0.0%	0 0.0%	1,104 100.0%
GRAND TOTAL	31,222 55.4%	22,664 40.2%	2,429 4.3%	56,315 100.0%

Prior Adult Criminal Record

For this report inmates are placed in a prior adult criminal record category based on their most extensive penetration into the criminal justice system prior to their current incarceration. Thirty-four percent (34%) of under custody inmates had served a prior prison term. For 24% prior jail was the most serious contact with the criminal justice system, while 16% had no prior arrest.

Figure 14. Prior Adult Criminal Record

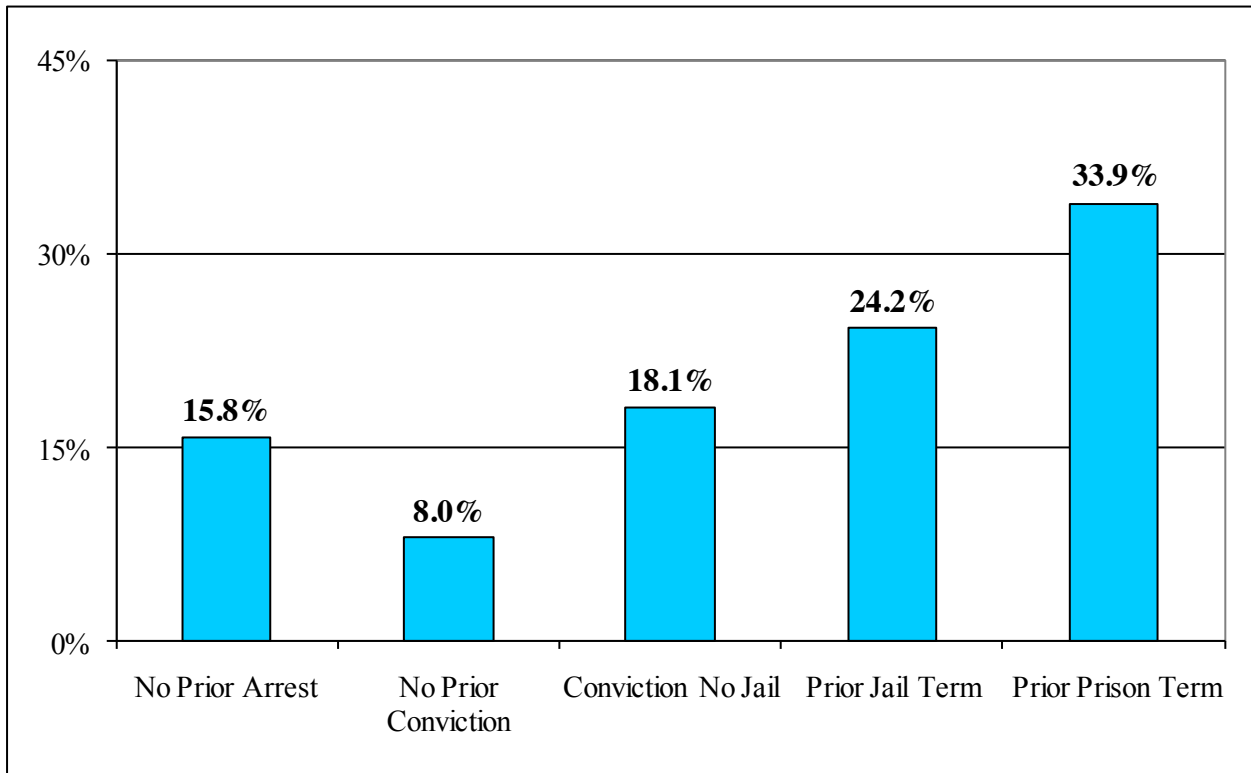


Table 14. Prior Adult Criminal Record; Under Custody Population January 1, 2011

No Prior Arrest	No Prior Conviction	Conviction No Jail	Prior Jail Term	Prior Prison Term	Total*
8,903	4,501	10,202	13,635	19,070	56,311
15.8%	8.0%	18.1%	24.2%	33.9%	100.0%

*Missing data on 4 cases.

Length of Time Served in Department Custody

One quarter (26%) of the inmate population had spent six years or more under custody since their latest admission to DOCS, while nearly one-third (32%) had spent less than one year under custody.

Inmates under custody on January 1, 2011, had spent an average of 59 months in DOCS since their latest admission date. The median length of time served was 25 months.

Figure 15. Length of Time Served in DOCS Custody Since Last Admission Date

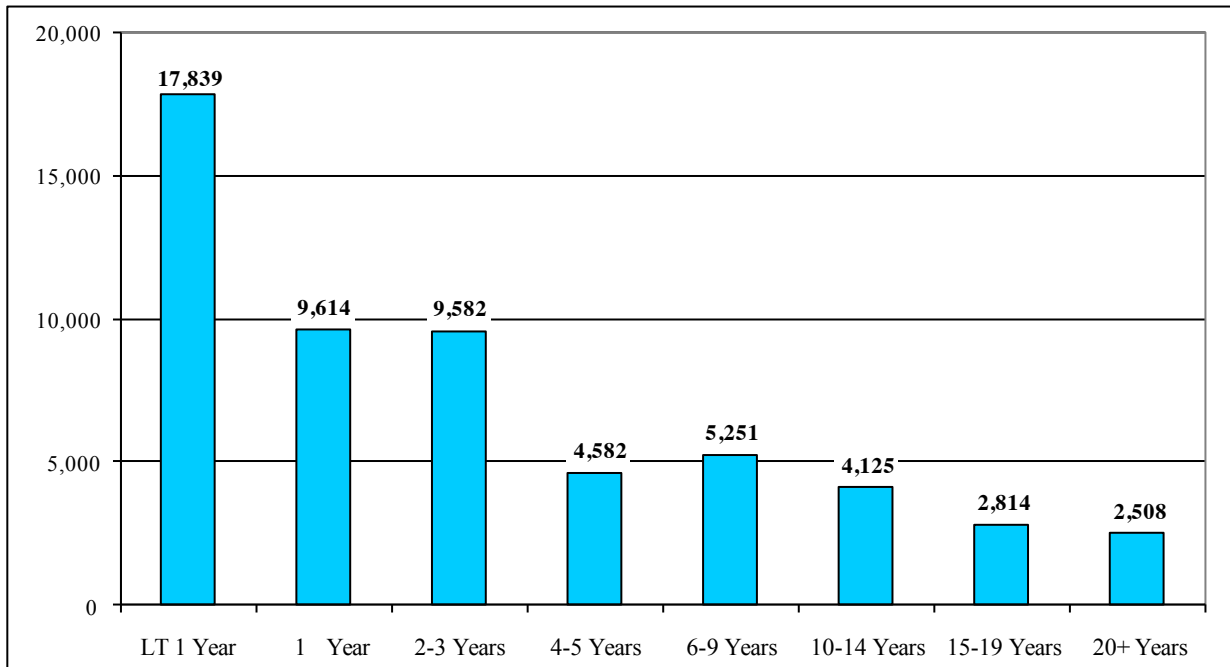


Table 15. DOCS Time Served in Months; Under Custody Population January 1, 2011

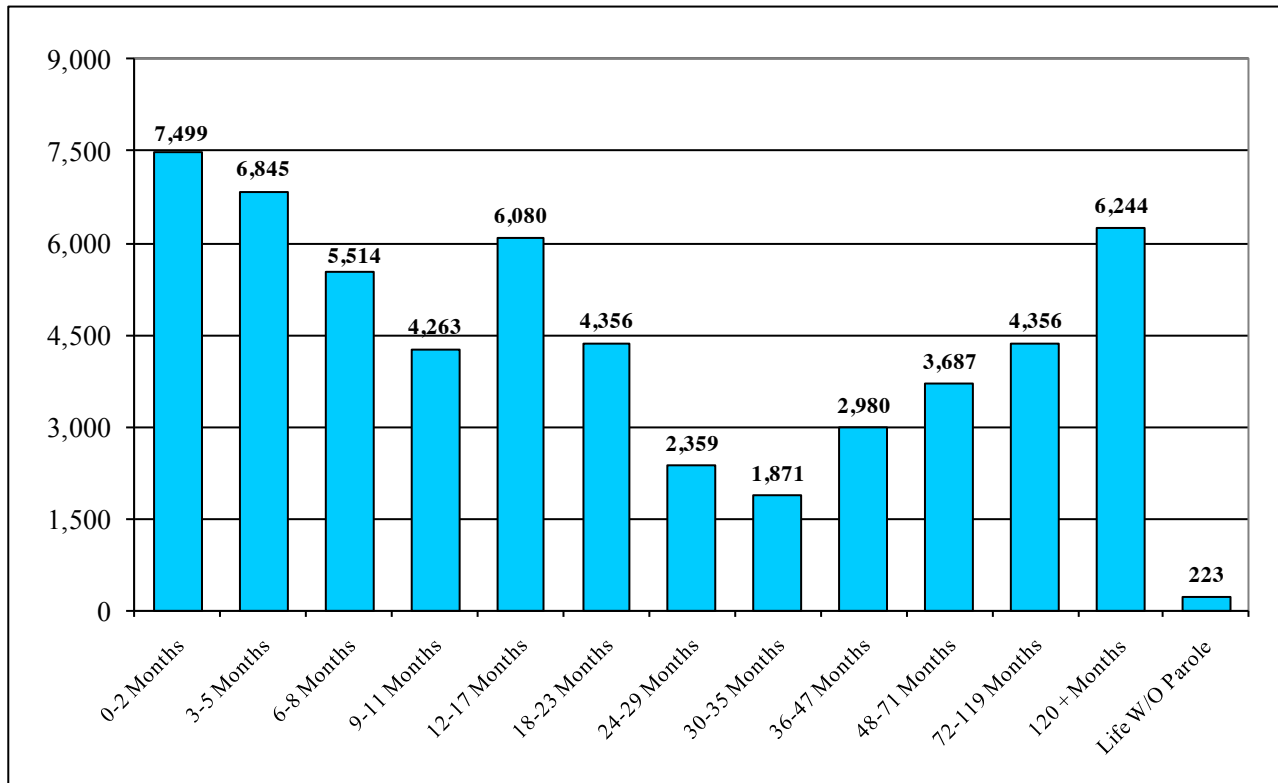
LT 1 Year	1 Year	2-3 Years	4-5 Years	6-9 Years	10-14 Years	15-19 Years	20+ Years	Total
17,839	9,614	9,582	4,582	5,251	4,125	2,814	2,508	56,315
31.7%	17.1%	17.0%	8.1%	9.3%	7.3%	5.0%	4.5%	100.0%
Average Time Served Since Latest Admission Date in Months							59.0	
Median Time Served Since Latest Admission Date in Months							25.3	

Time to Earliest Release Eligibility

Time to earliest release date is a measure of the length of time until the earliest possible date at which the inmate can be legally released.

More than three-fifths (61%) of the inmate population have less than two years to their earliest release dates. The average time to earliest release for the under custody population on January 1, 2011, was four years. The median time to earliest release was 15 months.

Figure 16. Length of Time to Earliest Release Date



**Table 16. Time to Earliest Release Date in Months;
Under Custody Population January 1, 2011**

0-2 Months	3-5 Months	6-8 Months	9-11 Months	12-17 Months	18-23 Months	24-29 Months	30-35 Months	36-47 Months	48-71 Months	72-119 Months	120+ Months	Life W/O Parole	Total*
7,499	6,845	5,514	4,263	6,080	4,356	2,359	1,871	2,980	3,687	4,356	6,244	223	56,277
13.3%	12.2%	9.8%	7.6%	10.8%	7.7%	4.2%	3.3%	5.3%	6.6%	7.7%	11.1%	0.4%	100.0%
Average Time to Earliest Release Date in Months**										48.3			
Median Time to Earliest Release Date in Months**										14.8			

*Missing data on 38 cases.

**Does not include the 223 Life Without Parole cases.

Determinate Sentencing

Over half (54% or 30,341) of the 56,315 inmates under Department custody on January 1, 2011 were serving determinate sentences.

As of that date, 85% (7,334) of the inmates committed for drug offenses (8,661) had determinate sentences while 64% (22,737) of the 35,426 inmates sentenced for Violent Felony Offenses were serving fixed terms. Other Coercive (247) and Youthful Offender (23) determinate sentences are for homicide or sex crimes.

Figure 17. Number of Determinate Sentences

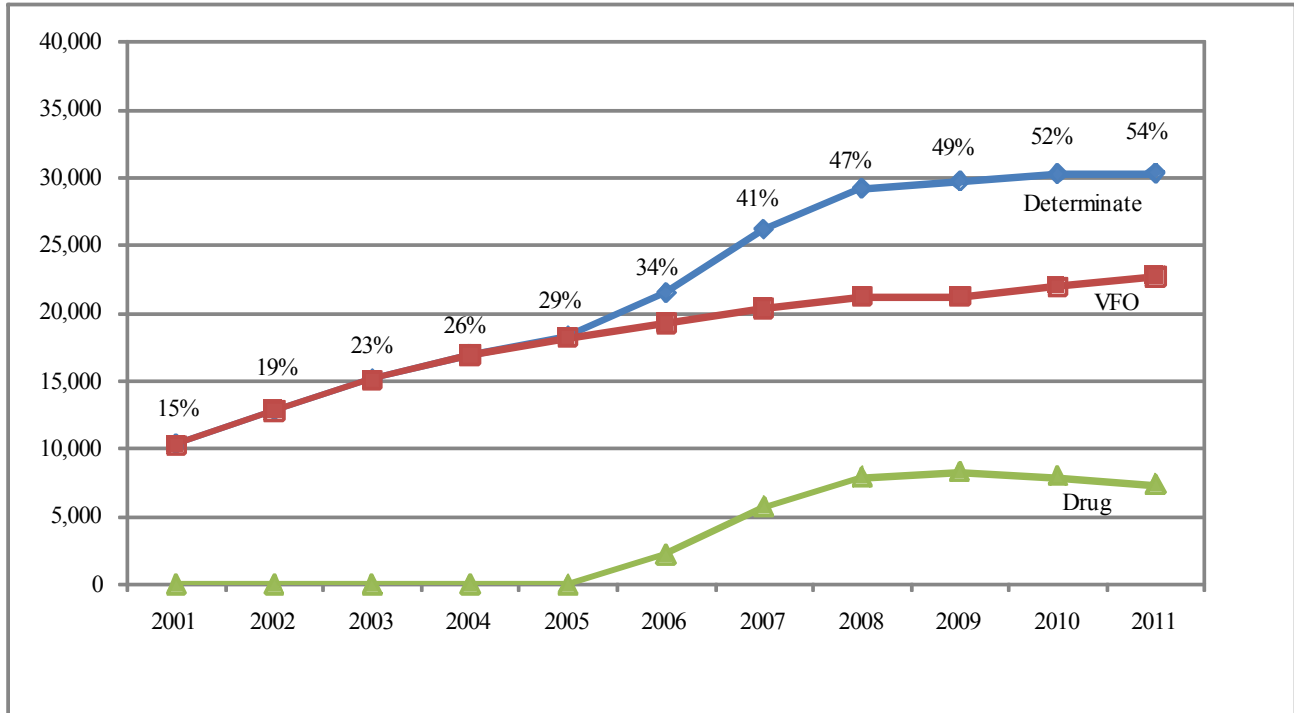


Table 17. Number of Determinate Sentences; Under Custody Population January 1, 2011

Number of Determinate Sentences	Violent Felony	Other Coercive	Drug Offenses	Property and Other Offenses	Youthful Offender	Juvenile Offender	Total
Indeterminate	12,689	4,244	1,330	6,630	893	188	25,974
Determinate	22,737	247	7,334	0	23	0	30,341
Total	35,426	4,491	8,664	6,630	916	188	56,315
Percent Determinate	64.2%	5.5%	84.6%	0.0%	2.5%	0.0%	53.9%

Table 17a. Historical Number of Determinate Sentences; Under Custody Population on January 1

January 1,	2001	2002	2003	2004	2005	2006	2007	2008	2009	2010	2011
Determinate	10,296	12,839	15,137	16,953	18,271	21,504	26,174	29,215	29,725	30,257	30,341
Percent	15%	19%	23%	26%	29%	34%	41%	47%	49%	52%	54%

Prepared by:

Dan Bernstein
Program Research Specialist III

Division of Program Planning,
Research and Evaluation

April 2011