

State of New York
Department of Correctional Services

Building Number 2
Harriman Office Campus
Albany, New York 12226

HUB SYSTEM:

**PROFILE OF INMATE POPULATION
UNDER CUSTODY ON JANUARY 1, 2004**



George E. Pataki
Governor



Glenn S. Goord
Commissioner

EXECUTIVE SUMMARY

In 1992, the New York State Department of Correctional Services reorganized the delivery of program services to the inmate population. One of the components of this plan is grouping the correctional facilities by geographical proximity into administrative regions. This report presents a profile of the inmate population within each region. This executive summary briefly describes the characteristics of the total undercustody population and then lists the range of values found across the nine administrative HUBS on a selected set of variables.

CHARACTERISTICS	CATEGORY	TOTAL UNDER CUSTODY	RANGE ACROSS HUBS	
			Low	High
Gender	Female	4.5%	0.0%	21.3%
Age	Average age	35.1 yrs	29.8 yrs	38.2 yrs.
Race/ethnic status	White	18.1%	11.3%	24.9%
	African American	50.0%	46.2%	54.2%
	Hispanic	29.5%	24.4%	36.6%
Region	From New York City	60.1%	45.2%	77.0%
Birthplace	Foreign Born	12.6%	8.4%	17.4%
Marital Status	Never married	64.7%	57.0%	76.3%
Living Children	One or more living children	59.4%	45.0%	65.1%
Religious Affiliation	Catholic	29.7%	24.4%	33.7%
	Protestant	31.0%	27.9%	35.1%
	Islam	14.5%	12.2%	16.6%
Veteran Status	Veteran	5.3%	2.2%	7.4%
Minimum Sentence	Average minimum sentence in months	101.6 mos.	53.8 mos.	150.1 mos.
Crime	Violent Felony	55.8%	42.4%	73.3%
Second felony offender status	Second felony	46.3%	34.0%	59.9%

CHARACTERISTICS	CATEGORY	TOTAL UNDER CUSTODY	RANGE ACROSS HUBS	
			Low	High
Prior adult criminal record	Prior prison term	34.9%	25.4%	41.5%
Time served at current facility	Median time served in months	7.2 mos.	4.9 mos.	12.5 mos.
Time served in Department custody	Median time served in months	25.3 mos.	13.4 mos.	71.9 mos.
Time to earliest release	Median time to release in months	16.9 mos.	12.9 mos.	33.4 mos.
Reading level	Test results at 8 th grade or below for all inmates	36.1%	24.8%	42.1%
Academic Degree	Verified high school diploma or above	48.4%	43.0%	62.7%
English language fluency	English dominant	90.3%	86.6%	93.2%
Substance Abuse	Reported Substance Abuse (includes Alcohol)	73.4%	64.5%	79.5%
Alcoholism	Alcoholic	26.0%	20.9%	32.5%

**THE HUB SYSTEM: PROFILE OF INMATE POPULATION
UNDER CUSTODY ON JANUARY 1, 2004**

Table of Contents

	<u>Page</u>
Executive Summary.....	i
Table of Contents.....	iii
Introduction.....	1
1. Demographic Characteristics	
Gender.....	2
Age.....	4
Race/Ethnic Status.....	7
Region of Commitment.....	9
Birthplace.....	11
Marital Status.....	14
Number of Living Children.....	16
Religious Affiliation.....	18
Veteran Status.....	20
2. Criminal History	
Minimum Sentence.....	22
Commitment Crime.....	27
Second Felony Sentencing Status.....	32
Prior Adult Criminal Record.....	34
Length of Time Served at Current Facility.....	36
Length of Time in Department Custody.....	39
Time to Earliest Release.....	42
3. Program Relevant Characteristics	
Reading Proficiency.....	45
Academic Degree Status.....	50
English Language Proficiency.....	52
Substance Abuse.....	54
Alcoholism.....	56
Appendix A Map of New York State Correctional Facilities.....	58

THE HUB SYSTEM: PROFILE OF INMATE POPULATION UNDER CUSTODY ON JANUARY 1, 2004

INTRODUCTION

The New York State Department of Correctional Services reorganized the delivery of program services to the inmate population in 1992. One of the important components of this plan was the grouping of correctional facilities by geographical proximity into administrative regions. These administrative regions, referred to as Hubs, are groups of neighboring facilities that share administrative support and program services. Each Hub has a core or "HUB" facility at which inmates are received and from which inmate movement and other administrative service delivery functions are controlled.

Purpose of the Report

The sections of this report profile the inmate population in each Hub as well as the population at each of the correctional facilities within the Hub. These profiles contain information on demographic characteristics and on other variables. These data will familiarize staff at each Hub with the overall characteristics of inmates in the Hub population as well as with differences in the characteristics of the inmate population at each of the respective facilities in the Hub. This information permits comparisons with the characteristics of the inmate population between the different Hubs. The report serves as a profile of the under custody population at the beginning of the year 2004.

In the tables and graphs presented in the report each Hub is identified by the administrative facility for that Hub. Staff often refer to each Hub by the administrative facility for that Hub. The Hub facility for each Hub (along with a short abbreviation used in graphic displays) is as follows: Oneida C.F., Oneida Hub (ONI); Watertown C.F., Watertown Hub (WAT); Clinton C.F., Clinton Hub (CLD); Sullivan C.F., Sullivan Hub (SUL); Green Haven C.F., Green Haven Hub (GH); Great Meadow C.F., Great Meadow Hub (GM); Wende C.F., Wende Hub (WEN); Elmira C.F., Elmira Hub (ELM); Sing Sing C.F., New York City Hub (NYC). Appendix A presents a map showing the 9 regional Hubs and the correctional facilities within each.

Section One

DEMOGRAPHIC CHARACTERISTICS

Gender Distribution

There were 65,197 inmates under custody on January 1, 2004, of whom 62,284 (95.5%) were men and 2,913 (4.5%) were women (see Table 1). Female inmates retained the same proportion of the total population in January 2004 compared with January 2003 at 4.5% of the population.

The inmate population decreased by 1,548, a decline of 2.3 percent since January 1, 2003. Male inmates decreased by 1,465, a decline of 2.8 percent of the male inmate population. Female inmates decreased by 83, 2.8 percent of the female population.

Females are incarcerated in three of the nine Hubs. For these three, the percentage of a Hub's total population that consists of women ranges from 8.3% in the New York City Hub to 21.3% in the Green Haven Hub (see Table 1 and Figure 1).

Figure 1
Female Offenders in Each Hub

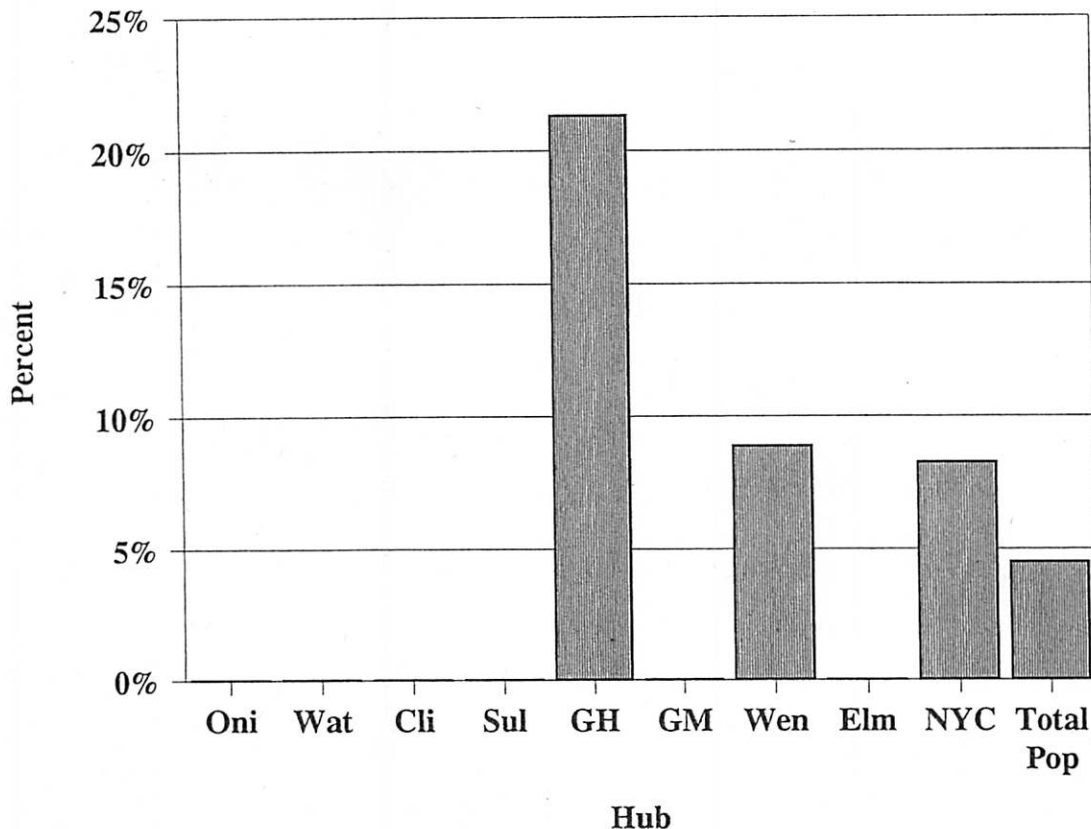


TABLE 1. GENDER OF INMATE BY HUB AND FACILITY; UNDERCUSTODY POPULATION JANUARY 1, 2004

HUB AND FACILITY	MALE	FEMALE	TOTAL
ONEIDA HUB			
CAMP GEORGETOWN	254	0	254
CAMP PHARSALIA	258	0	258
HALE CREEK ASACTC	437	0	437
MARCY	1330	0	1330
MID-STATE	1612	0	1612
HONAMK	1404	0	1404
ONEIDA	1185	0	1185
SUMMIT SHOCK-H	113	0	113
SUMMIT GENERAL	68	0	68
HUB SUBTOTAL	6661	0	6661
	100.0%	.0%	100.0%
WATERTOWN HUB			
CAPE VINCENT	1115	0	1115
GOVERNEUR	1033	0	1033
OGDENSBURG	606	0	606
RIVERVIEW	1116	0	1116
WATERTOWN	690	0	690
HUB SUBTOTAL	4560	0	4560
	100.0%	.0%	100.0%
CLINTON HUB			
ADIRONDACK	564	0	564
ALTONA	475	0	475
BARE HILL	1719	0	1719
CAMP GABRIELS	324	0	324
CHATEAUGAY ASACTC	215	0	215
CLINTON	2843	0	2843
FRANKLIN	1718	0	1718
LYON MOUNTAIN	161	0	161
UPSTATE	1206	0	1206
HUB SUBTOTAL	9225	0	9225
	100.0%	.0%	100.0%
SULLIVAN HUB			
EASTERN	1189	0	1189
MID-ORANGE	722	0	722
OTISVILLE	590	0	590
SHAWANGUNK	560	0	560
SULLIVAN	788	0	788
ULSTER	739	0	739
WALLKILL	580	0	580
WOODBOURNE	792	0	792
HUB SUBTOTAL	5960	0	5960
	100.0%	.0%	100.0%
GREEN HAVEN HUB			
BEACON FEMALE	0	190	190
BEDFORD HILLS	0	827	827
DOWNSTATE	1184	0	1184
FISHKILL	1727	0	1727
GREEN HAVEN	2109	0	2109
TACONIC	0	341	341
HUB SUBTOTAL	5020	1358	6378
	78.7%	21.3%	100.0%
GREAT MEADOW HUB			
CAMP MCGREGOR	295	0	295
COXSACKIE	1018	0	1018
GREAT MEADOW	1641	0	1641
GREENE	1685	0	1685
HUDSON	452	0	452
HUDSON WORK REL	106	0	106
MORIAH SHOCK	236	0	236
MT MCGREGOR	527	0	527
WASHINGTON	1072	0	1072
HUB SUBTOTAL	7032	0	7032
	100.0%	.0%	100.0%
WENDE HUB			
ALBION FEMALE	0	1027	1027
ALBION WORK RELEASE	0	60	60
ATTICA	2188	0	2188
BUFFALO WORK RELEASE	195	0	195
COLLINS	1199	0	1199
GOWANDA	1746	0	1746
GROVELAND	1229	0	1229
LAKEVIEW SHOCK	509	0	509
LAKEVIEW RECEP	170	0	170
LAKEVIEW SHOCK FEM	0	106	106
LAKEVIEW FEM TRANS	0	6	6
LAKEVIEW ASAT	198	0	198
LAKEVIEW SHU200	163	0	163
LIVINGSTON	861	0	861
ORLEANS	1176	0	1176
ROCHESTER	75	0	75
WENDE	910	0	910
WYOMING	1600	0	1600
WYOMING ASACTC	99	0	99
HUB SUBTOTAL	12318	1199	13517
	91.1%	8.9%	100.0%
ELHIRA HUB			
AUBURN	1777	0	1777
BUTLER FEEDER	57	0	57
BUTLER ASACTC	167	0	167
BUTLER MIN MALE	285	0	285
CAYUGA	1004	0	1004
ELHIRA	1783	0	1783
FIVE POINTS	1347	0	1347
FIVE POINTS ICP	19	0	19
FIVE POINTS STP	22	0	22
MONTEREY SHOCK	246	0	246
SOUTHPORT	877	0	877
HUB SUBTOTAL	7584	0	7584
	100.0%	.0%	100.0%
NEW YORK CITY HUB			
ARTHURKILL	942	0	942
BAYVIEW	0	154	154
BAYVIEW WORK RELEASE	0	202	202
EDGECOMBE	359	0	359
FULTON	216	0	216
LINCOLN	266	0	266
QUEENSBORO GENERAL	405	0	405
SING SING	1736	0	1736
HUB SUBTOTAL	3924	356	4280
	91.7%	8.3%	100.0%
GRAND TOTAL	62284	2913	65197
	95.5%	4.5%	100.0%

Age Distribution

Table 2 shows the age distribution by Hub. The largest cohort was inmates 35-39 years old (11,177; 17.1%). The second largest age cohort was inmates 25-29 years old (10,942; 16.8%).

Sixteen to eighteen year old inmates, for whom the State must provide schooling, constituted 1.1% (N = 740) of the total under custody population as of January 1, 2004. There were more than 100 inmates age 16 - 18 in two of the nine Hubs. For programmatic purposes the Department has increased the concentration of younger inmates at selected facilities in the Great Meadow Hub (see Figure 2). The average and median age of inmates housed at each facility is presented in Table 2A.

Inmates sixty years or older constituted 2.0% (N=1,311) of the 65,197 inmates under custody. The Oneida, Clinton, Sullivan, Green Haven, Wende and Elmira Hubs all have at least 100 inmates who are sixty or older.

The increase in the average age of inmates is a result of the change in the proportion of inmates age 40 and older. In recent years while total population has declined, the number of inmates age 60 and over has increased in absolute numbers. The result is an older inmate population.

Figure 2
Inmate Age: Under 20 and Over 60

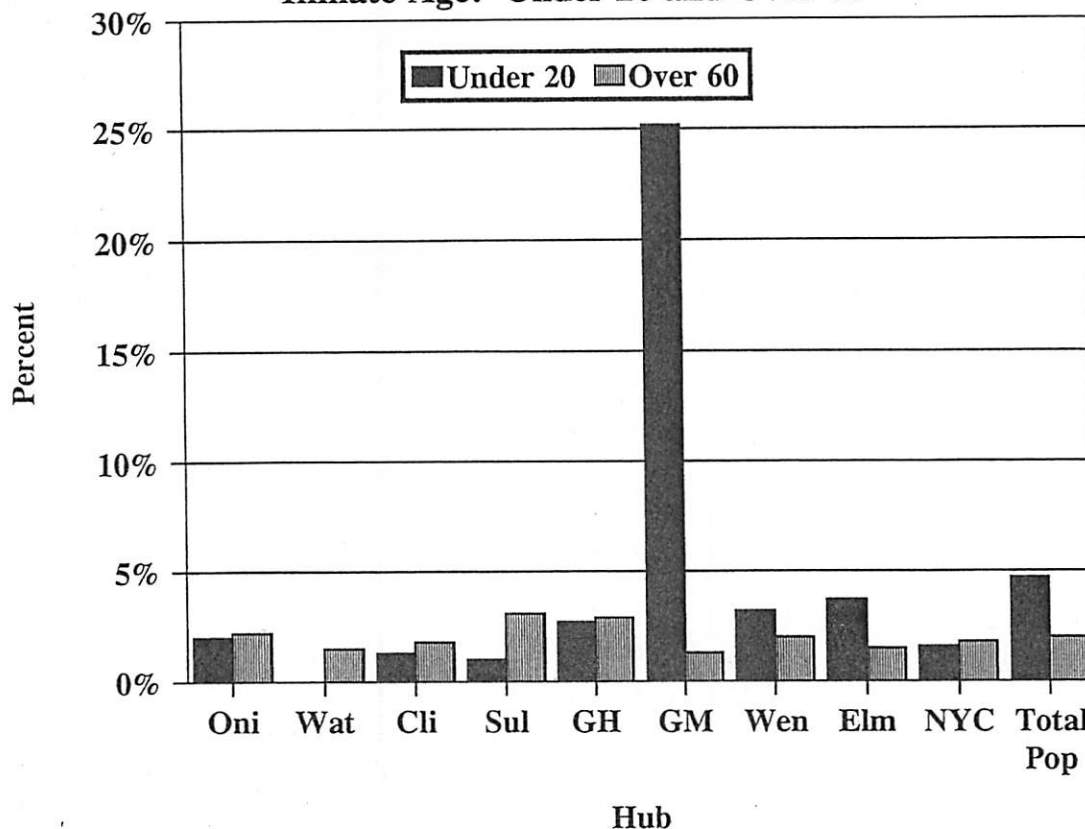


TABLE 2A. AGE BY HUB AND FACILITY
UNDERCUSTODY POPULATION JANUARY 1, 2004

HUB AND FACILITY	TOTAL	AVERAGE	MEDIAN
ONEIDA HUB			
CAMP GEORGETOWN	254	33.5	33.5
CAMP PHARSALIA	258	35.1	35.0
HALE CREEK ASACTC	437	32.0	31.0
MARCY	1330	35.5	35.0
MID-STATE	1612	36.6	36.0
MOHAWK	1404	36.1	34.0
ONEIDA	1185	35.8	35.0
SUMMIT SHOCK-M	113	27.0	26.0
SUMMIT GENERAL	68	28.9	26.0
HUB SUBTOTAL	6661	35.4	34.0
WATERTOWN HUB			
CAPE VINCENT	1115	35.2	35.0
GOVERNEUR	1033	35.7	35.0
OGDENSBURG	606	35.9	35.0
RIVERVIEW	1116	35.4	35.0
WATERTOWN	490	35.8	35.0
HUB SUBTOTAL	4560	35.5	35.0
CLINTON HUB			
ADIRONDACK	564	35.7	35.0
ALTONA	475	34.6	34.0
BARE HILL	1719	35.8	35.0
CAMP GABRIELS	324	33.8	33.0
CHATEAUGAY ASACTC	215	29.6	28.0
CLINTON	2843	36.4	36.0
FRANKLIN	1718	36.0	35.0
LYON MOUNTAIN	161	34.0	33.0
UPSTATE	1206	32.3	31.0
HUB SUBTOTAL	9225	35.3	34.0
SULLIVAN HUB			
EASTERN	1189	37.0	36.0
MID-ORANGE	722	41.3	40.0
OTISVILLE	590	40.6	39.5
SHAWANGUNK	560	38.9	38.0
SULLIVAN	788	39.3	39.0
ULSTER	739	33.5	34.0
WALLKILL	580	36.6	35.0
WOODBOURNE	792	39.2	38.5
HUB SUBTOTAL	5960	38.2	37.0
GREEN HAVEN HUB			
BEACON FEMALE	190	36.7	38.0
BEDFORD HILLS	827	36.4	36.0
DOWNSTATE	1184	33.1	32.0
FISHKILL	1727	38.3	38.0
GREEN HAVEN	2109	38.2	37.0
TACONIC	341	37.2	38.0
HUB SUBTOTAL	6378	37.0	36.0
GREAT MEADOW HUB			
CAMP MCGREGOR	295	32.7	32.0
COXSACKIE	1018	30.4	27.0
GREAT MEADOW	1641	34.2	34.0
GREENE	1685	23.5	20.0
HUDSON	452	35.4	34.0
HUDSON WORK REL	106	35.3	35.0
MORIAH SHOCK	236	27.0	26.0
MT MCGREGOR	527	36.1	36.0
WASHINGTON	1072	25.9	21.0
HUB SUBTOTAL	7032	29.8	26.0
WENDE HUB			
ALBION FEMALE	1027	35.8	36.0
ALBION WORK RELEASE	60	37.7	38.0
ATTICA	2188	36.8	36.0
BUFFALO WORK RELEASE	195	35.4	35.0
COLLINS	1199	35.5	34.0
GOWANDA	1746	36.2	36.0
GROVELAND	1229	38.6	38.0
LAKEVIEW SHOCK	509	24.9	24.0
LAKEVIEW RECEP	170	25.5	24.0
LAKEVIEW SHOCK FEM	106	29.0	28.5
LAKEVIEW FEM TRANS	6	29.2	28.5
LAKEVIEW ASAT	198	27.3	26.0
LAKEVIEW SHU200	163	28.6	27.0
LIVINGSTON	861	33.6	32.0
ORLEANS	1176	34.8	34.0
ROCHESTER	75	35.8	37.0
WENDE	910	37.3	36.0
WYOMING	1600	35.0	34.0
WYOMING ASACTC	99	33.4	32.0
HUB SUBTOTAL	13517	35.2	34.0
ELMIRA HUB			
AUBURN	1777	36.2	35.0
BUTLER FEEDER	57	33.0	32.0
BUTLER ASACTC	167	32.0	31.0
BUTLER MIN MALE	285	33.8	33.0
CAYUGA	1004	35.1	35.0
ELMIRA	1783	35.2	34.0
FIVE POINTS	1347	33.5	33.0
FIVE POINTS ICP	19	36.3	38.0
FIVE POINTS STP	22	31.7	30.0
MONTEREY SHOCK	246	22.2	20.0
SOUTHPORT	877	33.9	33.0
HUB SUBTOTAL	7584	34.4	33.0
NEW YORK CITY HUB			
ARTHURKILL	942	38.5	38.0
BAYVIEW	154	38.4	39.0
BAYVIEW WORK RELEASE	202	38.7	39.0
EDGECOMBE	359	36.7	36.0
FULTON	216	34.8	34.0
LINCOLN	266	35.8	34.0
QUEENSBORO GENERAL	405	36.5	36.0
SING SING	1736	36.2	36.0
HUB SUBTOTAL	4280	36.9	36.0
GRAND TOTAL	65197	35.1	34.0

Race/Ethnic Distribution

Race/ethnic status of under custody inmates is shown in Table 3. Exactly half (50.0%) of the inmates were African-American, about thirty percent were Hispanic (29.5%) and the remainder were White (18.1%), Native American (0.6%), Asian (0.5%), other (0.6%), or unknown (0.6%). There was variability in the distribution of ethnic groups among Hubs. For example, the percent of Whites ranged from 11.3% in the New York City Hub to 24.9% in the Wende Hub (see Figure 3). Among Hispanics, the range was from 24.4% in the Elmira Hub to 36.6% in the Watertown Hub. Among African-Americans, the range was from 46.2% in the Oneida Hub to 54.2% in the Elmira Hub.

Figure 3
Race and Ethnicity Profile

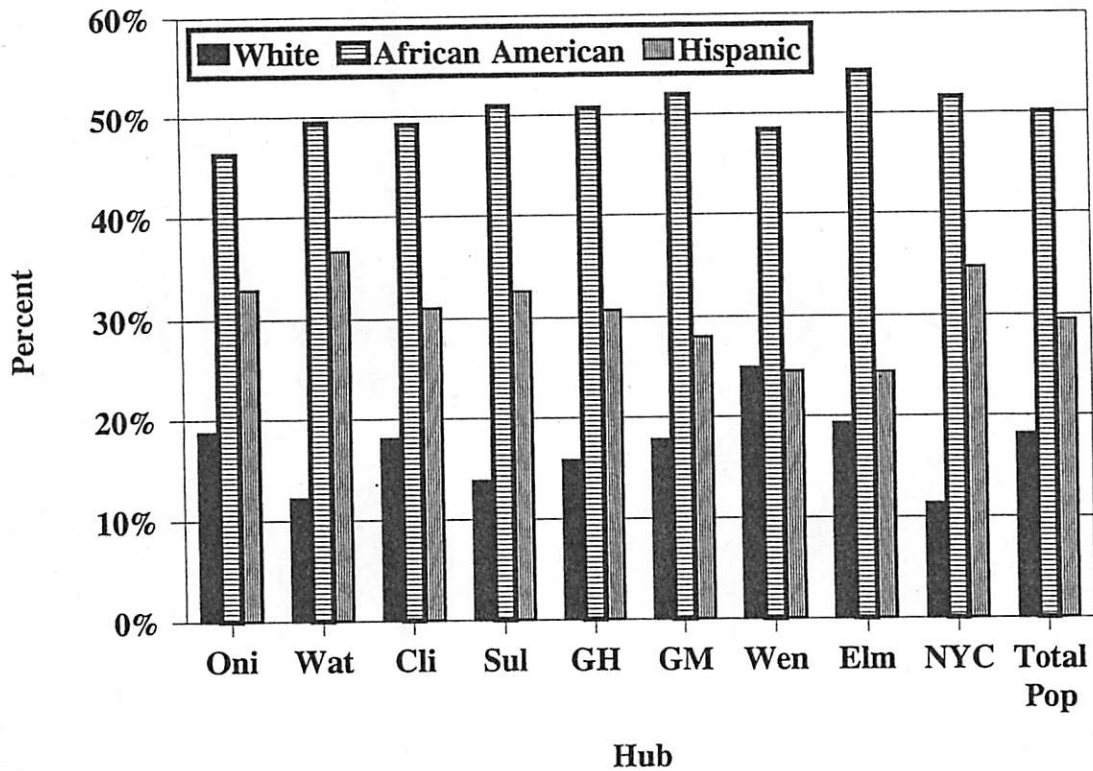


TABLE 3. RACE/ETHNIC STATUS BY HUB AND FACILITY; UNDERCUSTODY POPULATION JANUARY 1, 2004

HUB AND FACILITY	WHITE	AFRICAN AMERICAN	HISPANIC	NATIVE AMERICAN	ASIAN	OTHER	UNKNOWN	TOTAL
ONEIDA HUB								
CAMP GEORGETOWN	21	129	101	0	0	2	1	254
CAMP PHARSALIA	38	121	95	1	0	2	3	258
HALE CREEK ASACTC	51	230	148	2	1	0	5	437
MARCY	236	585	482	8	5	7	7	1350
MID-STATE	366	721	488	13	10	8	6	1612
MOHAWK	189	674	513	8	6	6	8	1404
ONEIDA	300	542	312	7	5	9	10	1185
SUMMIT SHOCK-H	32	53	25	1	0	1	1	113
SUMMIT GENERAL	12	25	28	2	0	0	1	68
HUB SUBTOTAL	1245	3080	2190	42	27	35	42	6661
	18.7%	46.2%	32.9%	.6%	.4%	.5%	.6%	100.0%
WATERTOWN HUB								
CAPE VINCENT	113	555	420	4	9	5	9	1115
GOUVERNEUR	126	528	360	5	4	3	7	1033
OGDENSBURG	66	288	237	4	5	3	3	606
RIVERVIEW	141	555	400	3	7	6	4	1116
WATERTOWN	104	321	250	5	2	3	5	690
HUB SUBTOTAL	550	2247	1667	21	27	20	28	4560
	12.1%	49.3%	36.6%	.5%	.6%	.4%	.6%	100.0%
CLINTON HUB								
ADIRONDACK	117	248	183	5	1	6	4	564
ALTONA	73	245	150	2	0	4	1	475
BARE HILL	299	797	582	13	10	14	4	1719
CAMP GABRIELS	49	179	92	3	0	1	0	324
CHATEAUGAY ASACTC	19	106	81	2	3	1	3	215
CLINTON	625	1423	734	18	19	16	8	2843
FRANKLIN	306	759	622	7	11	10	3	1718
LYON MOUNTAIN	28	86	46	0	0	0	1	161
UPSTATE	140	675	370	9	3	9	0	1206
HUB SUBTOTAL	1656	4518	2860	59	47	61	24	9225
	18.0%	49.0%	31.0%	.6%	.5%	.7%	.3%	100.0%
SULLIVAN HUB								
EASTERN	157	609	392	5	8	13	5	1189
MID-ORANGE	114	364	228	2	6	6	2	722
OTISVILLE	52	304	216	0	10	5	3	590
SHAWANGUNK	90	276	174	3	3	12	2	560
SULLIVAN	143	418	210	4	4	6	3	788
ULSTER	52	373	279	2	0	6	27	739
WALLKILL	62	334	175	2	3	2	2	580
WOODBORNE	146	355	268	2	11	10	0	792
HUB SUBTOTAL	816	3033	1942	20	45	60	44	5960
	13.7%	50.9%	32.6%	.3%	.8%	1.0%	.7%	100.0%
GREEN HAVEN HUB								
BEACON FEMALE	43	95	51	0	0	0	1	190
BEDFORD HILLS	193	435	180	0	1	0	18	827
DOWNSTATE	178	594	345	11	3	14	39	1184
FISHKILL	236	853	605	9	14	7	3	1727
GREEN HAVEN	275	1091	672	5	34	25	7	2109
TACONIC	74	157	105	0	0	0	5	341
HUB SUBTOTAL	999	3225	1958	25	52	46	73	6378
	15.7%	50.6%	30.7%	.4%	.8%	.7%	1.1%	100.0%
GREAT MEADOW HUB								
CAMP MCGREGOR	44	163	84	1	0	0	3	295
COXSACKIE	153	542	296	6	8	11	2	1018
GREAT MEADOW	280	893	425	20	5	10	8	1641
GREENE	252	868	516	9	16	11	13	1685
HUDSON	100	245	102	3	0	2	0	452
HUDSON WORK REL	39	47	20	0	0	0	0	106
MORIAH SHOCK	61	105	69	0	0	0	1	236
MT MCGREGOR	104	245	166	1	4	4	7	527
WASHINGTON	215	539	292	6	7	6	7	1072
HUB SUBTOTAL	1248	3647	1970	46	40	44	37	7032
	17.7%	51.9%	28.0%	.7%	.6%	.6%	.5%	100.0%
WENDE HUB								
ALBION FEMALE	244	505	264	4	1	1	8	1027
ALBION WORK RELEASE	35	18	7	0	0	0	0	60
ATTICA	413	1172	560	12	14	13	4	2188
BUFFALO WORK RELEASE	96	69	22	1	1	0	4	195
COLLINS	298	529	335	14	8	8	7	1199
GOWANDA	608	681	399	22	15	11	10	1746
GROVELAND	359	625	198	3	5	5	5	1229
LAKEVIEW SHOCK	85	212	118	1	0	3	0	509
LAKEVIEW RECEP	41	71	54	1	0	0	0	170
LAKEVIEW SHOCK FEM	35	43	22	0	0	0	6	106
LAKEVIEW FEM TRANS	2	3	1	0	0	0	0	6
LAKEVIEW ASAT	54	72	64	1	2	5	0	198
LAKEVIEW SHU200	24	80	56	3	0	0	0	163
LIVINGSTON	237	428	175	11	2	7	1	861
ORLEANS	219	619	308	12	5	5	8	1176
ROCHESTER	45	25	5	0	0	0	0	75
WENDE	202	495	196	6	1	4	6	910
WYOHING	345	834	396	11	6	4	4	1600
WYOHING ASACTC	23	42	33	0	0	0	1	99
HUB SUBTOTAL	3363	6523	3315	109	66	74	67	13517
	24.9%	48.3%	24.5%	.8%	.5%	.5%	.5%	100.0%
ELMIRA HUB								
AUBURN	320	990	425	12	6	13	11	1777
BUTLER FEEDER	24	17	15	1	0	0	0	57
BUTLER ASACTC	19	90	53	0	0	0	6	167
BUTLER MIN HALE	69	149	66	0	0	0	1	285
CAYUGA	239	514	228	8	2	6	7	1004
ELMIRA	619	917	399	17	12	14	5	1783
FIVE POINTS	221	774	327	12	2	7	4	1347
FIVE POINTS ICP	6	11	2	0	0	0	0	19
FIVE POINTS STP	4	13	5	0	0	0	0	22
MONTEREY SHOCK	49	123	70	2	0	1	1	246
SOUTHPORT	96	513	260	4	1	3	0	877
HUB SUBTOTAL	1466	4111	1850	56	23	45	33	7584
	19.3%	54.2%	24.4%	.7%	.3%	.6%	.4%	100.0%
NEW YORK CITY HUB								
ARTHURKILL	145	460	306	10	8	6	7	942
BAYVIEW	24	99	60	1	0	0	0	154
BAYVIEW WORK RELEASE	34	102	64	0	1	0	1	202
EDGECOMBE	28	158	168	2	0	0	3	359
FULTON	5	71	138	0	0	0	0	216
LINCOLN	59	120	79	1	0	1	6	266
QUEENSBORO GENERAL	23	227	146	2	1	1	5	405
SING SING	166	949	553	11	17	17	3	1736
HUB SUBTOTAL	484	2206	1486	27	27	27	25	4280
	11.3%	51.5%	34.7%	.6%	.6%	.6%	.6%	100.0%
GRAND TOTAL	11827	32590	19236	405	354	412	373	65197
	18.1%	50.0%	29.5%	.6%	.5%	.6%	.6%	100.0%

Region of Commitment

The majority of inmates (60.1%) were committed from New York City (New York City is comprised of Kings, New York, Queens, Richmond and Bronx counties). An additional 10.4% were committed from suburban New York (Nassau, Rockland, Suffolk, Westchester counties), 16.7% from upstate counties with a population center containing 50,000 inhabitants or more (Albany, Broome, Erie, Monroe, Oneida, Onondaga, Rensselaer, Schenectady counties), and 12.8% from the remaining upstate counties. There were differences across the Hubs in the proportion of inmates from each region of the state. The Wende and Elmira Hubs in the western part of the state had a lower concentration of inmates from New York City and a higher concentration of inmates committed from upstate counties (see Figure 4). Correspondingly, Sullivan and New York City Hubs had a higher concentration of inmates from New York City and Suburban New York City counties.

Figure 4
Inmates Committed From New York City

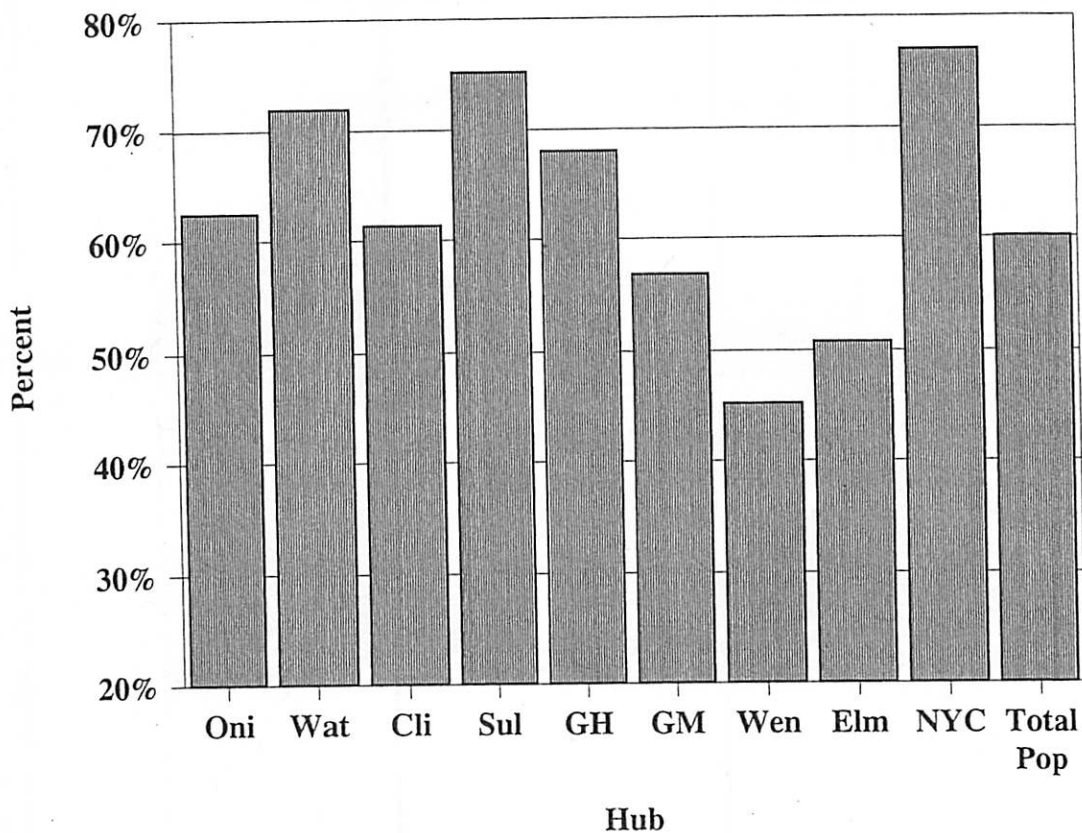


TABLE 4. REGION OF COMMITMENT BY HUB AND FACILITY; UNDERCUSTODY POPULATION JANUARY 1, 2004

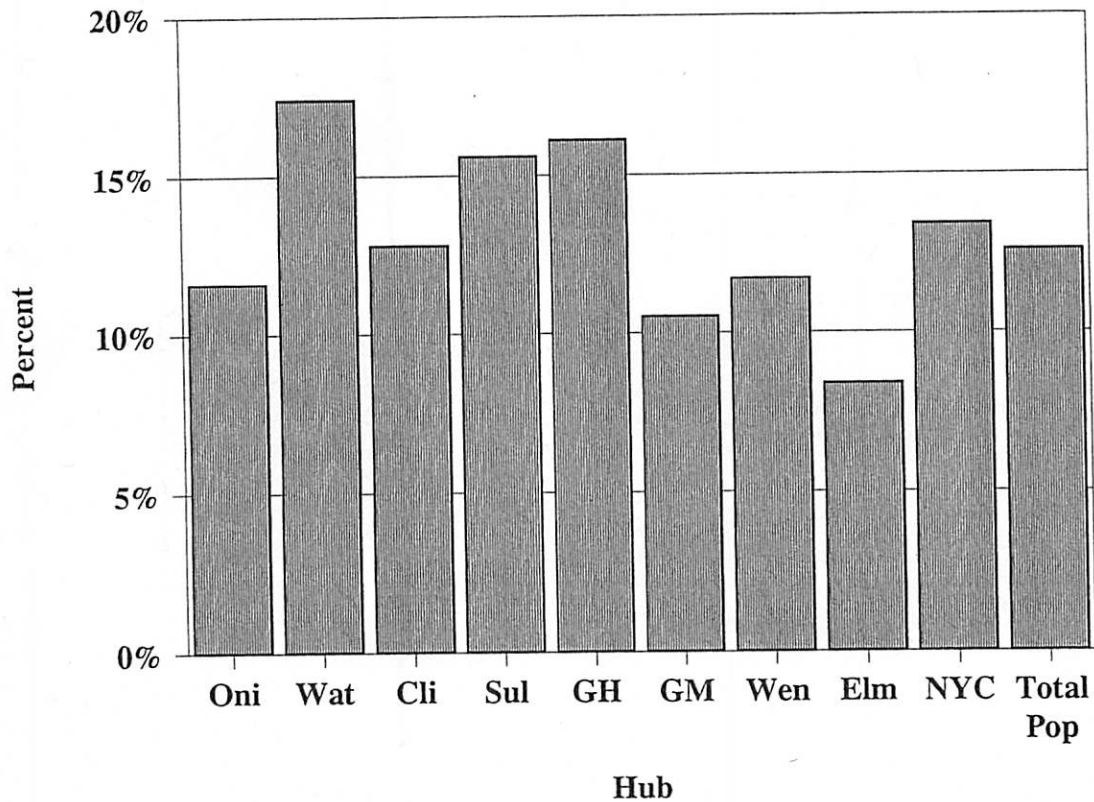
HUB AND FACILITY	NEW YORK CITY	SUBURBAN NEWYORK	UPSTATE URBAN	UPSTATE OTHER	TOTAL
ONEIDA HUB					
CAMP GEORGETOWN	182	13	30	29	254
CAMP PHARSALIA	185	24	28	23	258
HALE CREEK ASACTC	245	50	75	69	437
MARCY	893	116	181	139	1329
MID-STATE	974	158	239	241	1612
MOHAWK	944	145	172	142	1403
ONEIDA	646	118	205	216	1185
SUMMIT SHOCK-M	49	13	26	25	113
SUMMIT GENERAL	49	2	11	6	68
HUB SUBTOTAL	4165	639	965	890	6659
	62.5%	9.6%	14.5%	13.4%	100.0%
WATERTOWN HUB					
CAPE VINCENT	823	88	116	88	1115
GOUVERNEUR	734	119	94	86	1033
OGDENSBURG	419	75	57	55	606
RIVERVIEW	819	101	117	78	1115
WATERTOWN	482	67	78	63	690
HUB SUBTOTAL	3277	450	462	370	4559
	71.9%	9.9%	10.1%	8.1%	100.0%
CLINTON HUB					
ADIRONDACK	317	78	74	95	564
ALTONA	288	69	71	47	475
BARE HILL	1085	241	182	211	1719
CAMP GABRIELS	180	46	48	50	324
CHATEAUGAY ASACTC	140	22	29	24	215
CLINTON	1656	356	484	345	2841
FRANKLIN	1101	209	186	221	1717
LYON MOUNTAIN	87	23	28	23	161
UPSTATE	800	120	181	104	1205
HUB SUBTOTAL	5654	1164	1283	1120	9221
	61.3%	12.6%	13.9%	12.1%	100.0%
SULLIVAN HUB					
EASTERN	825	168	97	98	1188
MID-ORANGE	563	93	26	42	722
OTISVILLE	483	59	22	25	589
SHAWANGUNK	400	73	46	40	559
SULLIVAN	554	98	72	62	786
ULSTER	627	57	29	26	739
WALKKILL	465	61	22	32	580
WOODBOURNE	559	98	56	79	792
HUB SUBTOTAL	4476	707	368	404	5955
	75.2%	11.9%	6.2%	6.8%	100.0%
GREEN HAVEN HUB					
BEACON FEMALE	110	15	36	29	190
BEDFORD HILLS	450	78	168	109	805
DOWNSTATE	742	173	111	122	1148
FISHKILL	1245	235	80	169	1727
GREEN HAVEN	1554	262	174	119	2109
TACONIC	200	39	56	45	340
HUB SUBTOTAL	4299	802	625	593	6319
	68.0%	12.7%	9.9%	9.4%	100.0%
GREAT MEADOW HUB					
CAMP MCGREGOR	207	24	33	31	295
COXSACKIE	626	117	155	120	1018
GREAT MEADOW	976	165	324	176	1641
GREENE	981	162	298	244	1685
HUDSON	246	58	83	65	452
HUDSON WORK REL	5	2	68	33	106
MORIAH SHOCK	95	33	48	60	236
MT MCGREGOR	324	59	82	62	527
WASHINGTON	537	147	236	152	1072
HUB SUBTOTAL	3995	767	1327	943	7032
	56.8%	10.9%	18.9%	13.4%	100.0%
WENDE HUB					
ALBION FEMALE	583	89	204	150	1026
ALBION WORK RELEASE	3	0	26	31	60
ATTICA	1231	224	470	263	2188
BUFFALO WORK RELEASE	3	1	109	82	195
COLLINS	578	106	302	213	1199
EDMUNDA	666	188	433	458	1745
GROVELAND	470	70	392	296	1228
LAKEVIEW SHOCK	271	48	85	105	509
LAKEVIEW RECEP	91	13	29	37	170
LAKEVIEW SHOCK FEM	40	6	25	35	106
LAKEVIEW FEM TRANS	2	3	0	1	6
LAKEVIEW ASAT	93	32	37	36	198
LAKEVIEW SHU200	99	17	27	20	163
LIVINGSTON	251	38	367	205	861
ORLEANS	572	99	319	184	1174
ROCHESTER	0	1	34	40	75
WENDE	406	55	302	147	910
WYONING	725	151	423	300	1599
WYONING ASACTC	24	1	52	22	99
HUB SUBTOTAL	6108	1142	3636	2625	13511
	45.2%	8.5%	26.9%	19.4%	100.0%
ELMIRA HUB					
AUBURN	1007	155	394	221	1777
BUTLER FEEDER	21	9	10	17	57
BUTLER ASACTC	84	19	34	30	167
BUTLER MIN MALE	140	23	62	60	285
CAYUGA	418	66	302	218	1004
ELMIRA	822	121	527	313	1783
FIVE POINTS	629	91	445	182	1347
FIVE POINTS ICP	9	1	4	5	19
FIVE POINTS STP	14	2	3	3	22
MONTEREY SHOCK	110	19	58	59	246
SOUTHPORT	595	67	131	84	877
HUB SUBTOTAL	3849	573	1970	1192	7584
	50.8%	7.6%	26.0%	15.7%	100.0%
NEW YORK CITY HUB					
ARTHURKILL	682	127	58	75	942
BAYVIEW	102	17	19	16	154
BAYVIEW WORK RELEASE	156	23	9	14	202
EDGECOMBE	336	3	9	11	359
FULTON	196	7	6	7	216
LINCOLN	161	95	3	7	266
QUEENSBORO GENERAL	341	64	0	0	405
SING SING	1322	217	119	78	1736
HUB SUBTOTAL	3296	553	223	208	4280
	77.0%	12.9%	5.2%	4.9%	100.0%
GRAND TOTAL	39119	6797	10859	8345	65120
	60.1%	10.4%	16.7%	12.8%	100.0%

Country of Birth

Eighty percent (80.0%) of under custody inmates were born in the United States. An additional eight percent (7.2%) were born in a United States Territory, including American Samoa, Panama Canal Zone, Guam, U.S. Virgin Islands and Puerto Rico (see Table 5). Approximately thirteen percent (12.6%, N = 8,234) of the under custody inmates were born in a foreign country. Most of the inmates born in a foreign country were from one of the island nations in the Caribbean basin (N = 4,823 or 7.4% of under custody inmates).¹

Foreign birth may have implications for programming decisions due to differences in culture or language (many inmates from the Caribbean, South America, or Central America are Spanish language dominant). The percent of foreign-born inmates ranged from 8.4% in the Elmira Hub to 17.4% in the Watertown Hub (see Figure 5 and Table 5A).

Figure 5
Foreign Born Inmates Undercustody



¹ For additional information on foreign born inmates see "The Impact of Foreign-Born Inmates on the New York State Department of Correctional Services" (February, 2004), New York State Department of Correctional Services, Albany, New York 12226.

TABLE 5A. WORLD REGION OF BIRTH BY HUB AND FACILITY; UNDERCUSTODY POPULATION JANUARY 1, 2004

HUB AND FACILITY	UNITED STATES	U.S. POSSESS	FDREIGN BORN	NOT KNOWN	TOTAL
ONEIDA HUB					
CAMP GEORGETOWN	220	31	3	0	254
CAMP PHARSALIA	219	36	3	0	258
HALE CREEK ASACTC	383	44	9	1	437
MARCY	994	130	206	0	1330
MID-STATE	1286	145	179	2	1612
MOHAWK	1034	104	264	2	1404
ONEIDA	1016	60	109	0	1185
SUMMIT SHOCK-M	106	7	0	0	113
SUMMIT GENERAL	59	9	0	0	68
HUB SUBTOTAL	5317	566	773	5	6661
	79.8%	8.5%	11.6%	.1%	100.0%
WATERTOWN HUB					
CAPE VINCENT	817	89	208	1	1115
GOVERNEUR	787	109	136	1	1033
OGDENSBURG	434	53	118	1	606
RIVERVIEW	833	81	200	2	1116
WATERTOWN	500	57	133	0	690
HUB SUBTOTAL	3371	389	795	5	4560
	73.9%	8.5%	17.4%	.1%	100.0%
CLINTON HUB					
ADIRONDACK	454	49	60	1	564
ALTONA	375	24	76	0	475
BARE HILL	1282	140	297	0	1719
CAMP GABRIELS	286	38	0	0	324
CHATEAUGAY ASACTC	186	14	15	0	215
CLINTON	2326	156	356	5	2843
FRANKLIN	1305	190	255	0	1718
LYON MOUNTAIN	149	10	2	0	161
UPSTATE	1018	66	122	0	1206
HUB SUBTOTAL	7381	655	1183	6	9225
	80.0%	7.1%	12.8%	.1%	100.0%
SULLIVAN HUB					
EASTERN	892	85	208	4	1189
MID-ORANGE	531	66	125	0	722
OTISVILLE	372	59	156	3	590
SHAWANGUNK	436	26	97	1	560
SULLIVAN	651	52	82	3	788
ULSTER	561	72	102	4	739
WALKILL	509	61	9	1	580
WALDRON	562	76	153	1	792
WOODBURN	4514	497	932	17	5960
HUB SUBTOTAL	4514	497	932	17	5960
	75.7%	8.3%	15.6%	.3%	100.0%
GREEN HAVEN HUB					
BEACON FEMALE	181	4	4	1	190
BEDFORD HILLS	691	36	86	14	827
DOWNSTATE	938	66	139	41	1184
FISHKILL	1261	136	327	3	1727
GREEN HAVEN	1517	153	436	3	2109
TACONIC	280	24	37	0	341
HUB SUBTOTAL	4868	419	1029	62	6378
	76.3%	6.6%	16.1%	1.0%	100.0%
GREAT MEADOW HUB					
CAMP MCGREGOR	268	26	1	0	295
COXSACKIE	810	68	139	1	1018
GREAT MEADOW	1363	111	165	2	1641
GREENE	1351	76	257	1	1685
HUDSON	414	31	4	3	452
HUDSON WORK REL	95	11	0	0	106
MORIAN SHOCK	217	19	0	0	236
MT MCGREGOR	412	36	79	0	527
WASHINGTON	913	65	92	2	1072
HUB SUBTOTAL	5843	443	737	9	7032
	83.1%	6.3%	10.5%	.1%	100.0%
WENDE HUB					
ALBION FEMALE	882	57	88	0	1027
ALBION WORK RELEASE	59	1	0	0	60
ATTICA	1804	151	229	4	2188
BUFFALO WORK RELEASE	183	8	4	0	195
COLLINS	962	80	137	0	1199
COWANDA	1427	87	231	1	1746
ORVELAND	1063	63	102	0	1229
LAKEVIEW SHOCK	302	22	185	0	509
LAKEVIEW RECEP	136	8	27	1	170
LAKEVIEW SHOCK FEM	90	7	9	0	106
LAKEVIEW FEM TRANS	5	0	1	0	6
LAKEVIEW ASAT	150	7	41	0	198
LAKEVIEW SHU200	131	5	27	0	163
LIVINGSTON	743	63	55	0	861
ORLEANS	946	77	151	2	1176
ROCHESTER	71	3	1	0	75
WENDE	774	60	70	6	910
WYOMING	1306	107	186	1	1600
WYOMING ASACTC	75	13	11	0	99
HUB SUBTOTAL	11107	819	1875	16	13517
	82.2%	6.1%	11.7%	.1%	100.0%
ELMIRA HUB					
AUBURN	1483	102	187	5	1777
BUTLER FEEDER	47	6	4	0	57
BUTLER ASACTC	143	17	7	0	167
BUTLER MIN MALE	256	28	3	0	285
CAYUGA	861	66	76	1	1004
ELMIRA	1531	104	144	4	1783
FIVE POINTS	1138	88	117	4	1347
FIVE POINTS ICP	15	0	4	0	19
FIVE POINTS STP	19	1	2	0	22
HONTEREY SHOCK	232	13	1	0	246
SOUTHPORT	724	60	91	2	877
HUB SUBTOTAL	6447	485	636	16	7584
	85.0%	6.4%	8.4%	.2%	100.0%
NEW YORK CITY HUB					
ARTHURKILL	679	87	174	2	942
BAYVIEW	144	7	3	0	154
BAYVIEW WORK RELEASE	176	18	8	0	202
EDGECOMBE	265	53	41	0	359
FULTON	153	48	15	0	216
LINCOLN	220	24	22	0	266
QUEENSBORO GENERAL	337	56	12	0	405
SING SING	1316	116	299	5	1736
HUB SUBTOTAL	3290	409	574	7	4280
	76.9%	9.6%	13.4%	.2%	100.0%
GRAND TOTAL	52138	4682	8234	143	65197
	80.0%	7.2%	12.6%	.2%	100.0%

Marital Status

About one-fifth (20.2%) of under custody inmates were legally married at the time of commitment. Another 4.8% were living in a common law arrangement at the time of their commitment. The majority were single, never married (64.7%); the balance were separated/divorced (8.7%) or widowed (0.9%) (see Table 6).

The distribution of single, never married inmates ranged from 57.0% in the Sullivan Hub to 76.3% in the Great Meadow Hub. The Great Meadow Hub had the highest proportion of young inmates (see Figure 6).

Figure 6
Marital Status, Never Married

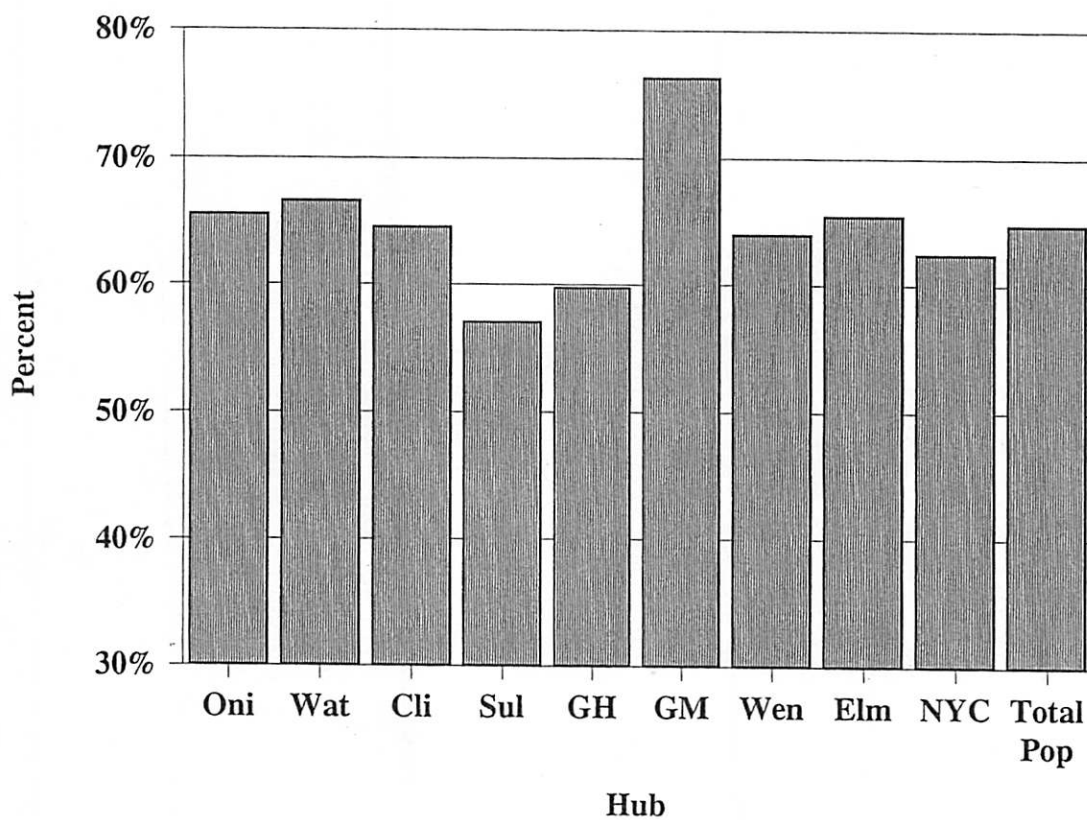


TABLE 6. MARITAL STATUS BY HUB AND FACILITY; UNDERCUSTODY POPULATION JANUARY 1, 2004

HUB AND FACILITY	NEVER MARRIED	MARRIED	COMMON LAW	SEPARATE/DIVORCE	WIDDED	NOT STATED/UNKNOWN	TOTAL
ONEIDA HUB							
CAMP GEORGETOWN	188	37	11	16	1	1	254
CAMP PHARSALIA	171	58	11	13	2	3	258
HALE CREEK ASACTC	289	42	33	50	2	1	437
MARCY	866	240	84	118	10	12	1330
MID-STATE	1016	292	70	206	21	7	1612
MOHAWK	943	237	65	128	16	15	1404
ONEIDA	752	224	52	144	10	3	1185
SUMMIT SHOCK-M	90	9	6	8	0	0	113
SUMMIT GENERAL	49	8	6	5	0	0	68
HUB SUBTOTAL	4364	1167	338	688	62	42	6661
	65.5%	17.5%	5.1%	10.3%	.9%	.6%	100.0%
WATERTOWN HUB							
CAPE VINCENT	756	192	60	94	3	10	1115
GOVERNEUR	695	162	55	108	8	5	1033
OGDENSBURG	407	109	33	54	1	2	606
RIVERVIEW	738	198	65	106	5	4	1116
WATERTOWN	441	128	42	67	5	7	690
HUB SUBTOTAL	3037	789	255	429	22	28	4560
	66.6%	17.3%	5.6%	9.4%	.5%	.6%	100.0%
CLINTON HUB							
ADIRONDACK	374	91	33	61	5	0	564
ALTONA	309	85	36	38	5	2	475
BARE HILL	1112	353	88	147	11	8	1719
CAMP GABRIELS	241	43	19	18	3	0	324
CHATEAUGAY ASACTC	172	26	4	13	0	0	215
CLINTON	1726	685	112	265	35	24	2843
FRANKLIN	1082	344	98	149	13	12	1718
LYON MOUNTAIN	125	11	12	11	0	2	161
UPSTATE	805	254	58	80	2	7	1206
HUB SUBTOTAL	5946	1890	460	800	74	55	9225
	64.5%	20.5%	5.0%	8.7%	.8%	.6%	100.0%
SULLIVAN HUB							
EASTERN	665	351	86	73	9	5	1189
MID-ORANGE	381	194	59	66	16	6	722
OTISVILLE	329	169	45	34	5	8	590
SHAWANGUNK	259	208	41	41	7	4	560
SULLIVAN	431	247	34	53	11	10	788
ULSTER	524	107	45	55	3	5	759
WALLKILL	359	149	30	35	10	1	580
WOODBOURNE	482	207	39	78	10	6	792
HUB SUBTOTAL	3400	1632	381	435	67	45	5960
	57.0%	27.4%	6.4%	7.3%	1.1%	.8%	100.0%
GREEN HAVEN HUB							
BEACON FEMALE	138	25	3	22	2	0	190
BEDFORD HILLS	567	160	7	68	31	14	827
DOWNSTATE	759	256	47	69	8	45	1184
FISHKILL	1035	407	109	142	19	15	1727
GREEN HAVEN	1111	660	128	148	39	23	2109
TACONIC	217	66	2	45	10	1	341
HUB SUBTOTAL	3807	1574	296	494	109	98	6378
	59.7%	24.7%	4.6%	7.7%	1.7%	1.5%	100.0%
GREAT MEADOW HUB							
CAMP MCGREGOR	235	27	14	14	1	4	295
COXSACKIE	758	137	38	69	13	3	1018
GREAT MEADOW	1101	313	78	120	16	13	1641
GREENE	1496	98	49	34	1	5	1685
HUDSON	296	77	32	39	3	0	452
HUDSON WORK REL	65	22	5	14	0	0	106
MORIAH SHOCK	193	18	10	14	1	0	236
MT MCGREGOR	332	123	27	39	4	2	527
WASHINGTON	891	91	36	48	3	5	1072
HUB SUBTOTAL	5367	906	289	395	42	35	7052
	76.3%	12.9%	4.1%	5.6%	.6%	.5%	100.0%
WENDE HUB							
ALBION FEMALE	720	179	7	104	17	0	1027
ALBION WORK RELEASE	31	14	1	12	2	0	60
ATTICA	1302	544	105	197	23	17	2188
BUFFALO WORK RELEASE	110	42	5	37	1	0	195
COLLINS	735	281	45	124	8	6	1199
GOWANDA	1048	359	57	263	15	4	1746
GROVELAND	729	224	47	207	14	8	1229
LAKEVIEW SHOCK	412	60	21	15	1	0	509
LAKEVIEW RECEP	140	20	4	6	0	0	170
LAKEVIEW SHOCK FEM	79	20	0	7	0	0	106
LAKEVIEW FEM TRANS	6	0	0	0	0	0	6
LAKEVIEW ASAT	151	30	6	10	0	1	198
LAKEVIEW SHUZOO	123	31	5	4	0	0	163
LIVINGSTON	574	155	26	97	8	1	861
ORLEANS	775	218	58	113	6	6	1176
ROCHESTER	47	15	2	11	0	0	75
WENDE	571	202	29	86	10	12	910
WYOMING	1029	318	75	164	6	8	1600
WYOMING ASACTC	55	28	4	12	0	0	99
HUB SUBTOTAL	8637	2740	497	1469	111	63	13517
	65.9%	20.3%	3.7%	10.9%	.8%	.5%	100.0%
ELMIRA HUB							
AUBURN	1085	437	77	137	27	14	1777
BUTLER FEEDER	36	12	2	7	0	0	57
BUTLER ASACTC	127	15	13	12	0	0	167
BUTLER MIN MALE	198	42	14	27	1	3	285
CAYUGA	639	202	42	107	10	4	1004
ELMIRA	1142	377	78	149	18	19	1783
FIVE POINTS	874	280	51	115	15	12	1347
FIVE POINTS ICP	15	3	0	0	0	0	19
FIVE POINTS STP	18	3	0	0	0	0	22
MONTREY SHOCK	217	15	8	4	0	0	246
SOUTHPORT	606	186	37	41	3	4	877
HUB SUBTOTAL	4957	1571	323	602	75	56	7584
	65.4%	20.7%	4.3%	7.9%	1.0%	.7%	100.0%
NEW YORK CITY HUB							
ARTHURKILL	537	219	59	100	16	11	942
BAYVIEW	112	21	5	11	5	0	154
BAYVIEW WORK RELEASE	134	39	3	20	6	0	202
EDGECOMBE	238	59	27	32	2	1	359
FULTON	143	29	28	16	0	0	216
LINCOLN	179	46	13	25	1	2	266
QUEENSBORO GENERAL	286	50	34	31	3	1	405
SING SING	1043	446	103	108	23	13	1736
HUB SUBTOTAL	2672	909	272	343	56	28	4280
	62.4%	21.2%	6.4%	8.0%	1.3%	.7%	100.0%
GRAND TOTAL	62187	13178	3111	5653	618	450	65197
	64.7%	20.2%	4.8%	8.7%	.9%	.7%	100.0%

Number of Living Children

The majority of inmates under custody (59.4%) report at least one living child (see Table 7 and Figure 7). Approximately 11% of under custody inmates reported four or more living children. The percentage of inmates with at least one child varied considerably from 45% in the Great Meadow Hub to 65.1% in the Watertown Hub. The Great Meadow Hub, with the highest concentration of young offenders, had the lowest percentage of inmates with children.

Figure 7
Inmates With One or More Living Children

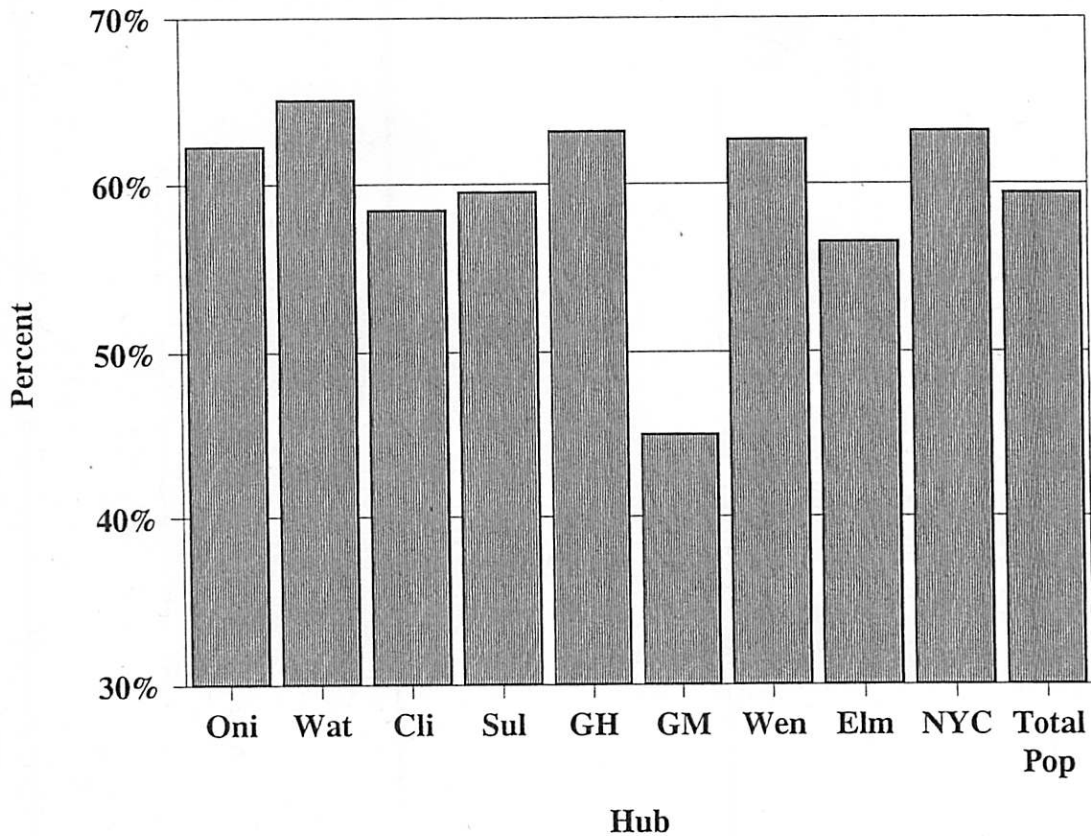


TABLE 7. NUMBER OF LIVING CHILDREN BY HUB AND FACILITY; UNDERCUSTODY POPULATION JANUARY 1, 2004

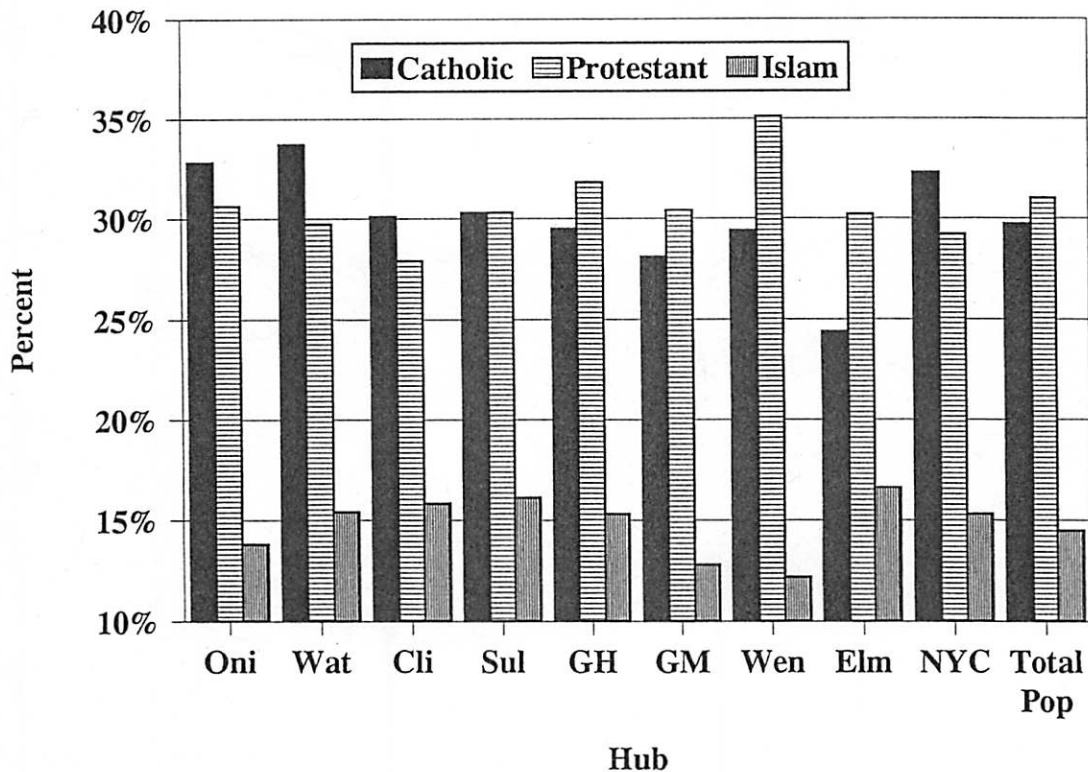
HUB AND FACILITY	NO CHILDREN	1 CHILD	2 CHILDREN	3 CHILDREN	4 OR MORE	UNKNOWN	TOTAL
ONEIDA HUB							
CAMP GEORGETOWN	89	73	34	24	30	4	254
CAMP PHARSALIA	67	76	59	27	26	3	258
HALE CREEK ASACTC	138	124	74	41	56	4	437
MARCY	498	313	221	128	124	46	1330
MID-STATE	574	382	263	162	154	47	1612
MOHAWK	472	346	259	133	145	49	1404
ONEIDA	402	267	224	132	125	35	1185
SUMMIT SHOCK-H	52	32	15	6	8	0	113
SUMMIT GENERAL	34	16	10	3	5	0	68
HUB SUBTOTAL	2326	1629	1159	656	703	188	6661
	34.9%	24.5%	17.4%	9.8%	10.6%	2.8%	100.0%
WATERTOWN HUB							
CAPE VINCENT	355	252	222	114	134	38	1115
GOVERNEUR	342	258	194	97	104	38	1033
OGDENSBURG	197	161	107	64	72	5	606
RIVERVIEW	378	290	190	98	128	32	1116
WATERTOWN	197	168	152	83	81	9	690
HUB SUBTOTAL	1469	1129	865	456	519	122	4560
	32.2%	24.8%	19.0%	10.0%	11.4%	2.7%	100.0%
CLINTON HUB							
ADIRONDACK	217	120	93	57	65	12	564
ALTONA	156	109	80	48	66	16	475
BARE HILL	627	382	299	159	183	69	1719
CAMP GABRIELS	119	79	61	36	28	1	324
CHATEAUGAY ASACTC	96	50	39	13	14	3	215
CLINTON	1114	611	434	252	267	165	2843
FRANKLIN	601	371	313	177	211	45	1718
LYON MOUNTAIN	55	46	27	17	13	3	161
UPSTATE	513	286	204	90	86	27	1206
HUB SUBTOTAL	3498	2054	1550	849	933	341	9225
	37.9%	22.3%	16.8%	9.2%	10.1%	3.7%	100.0%
SULLIVAN HUB							
EASTERN	397	273	230	98	139	52	1189
MID-ORANGE	214	143	133	63	79	29	722
OTISVILLE	168	140	90	57	57	78	590
SHAWANGUNK	185	137	101	45	53	44	560
SULLIVAN	292	165	131	55	85	60	788
ULSTER	236	182	127	62	95	37	739
WALLKILL	204	156	90	58	50	22	580
WOODBOURNE	269	155	135	69	96	68	792
HUB SUBTOTAL	1960	1351	1037	507	654	451	5960
	32.9%	22.7%	17.4%	8.5%	11.0%	7.6%	100.0%
GREEN HAVEN HUB							
BEACON FEMALE	46	42	48	25	29	0	190
BEDFORD HILLS	223	178	144	119	147	16	827
DOWNSTATE	427	258	201	106	143	49	1184
FISHKILL	600	381	292	149	182	123	1727
GREEN HAVEN	680	472	368	214	264	111	2109
TACONIC	71	80	61	54	74	1	341
HUB SUBTOTAL	2047	1411	1114	667	839	300	6378
	32.1%	22.1%	17.5%	10.5%	13.2%	4.7%	100.0%
GREAT MEADOW HUB							
CAMP MCGREGOR	129	62	50	19	30	5	295
COXSACKIE	501	231	126	62	67	31	1018
GREAT MEADOW	747	372	206	105	112	99	1641
GREENE	1143	299	101	51	55	36	1685
HUDSON	169	113	71	33	44	22	452
HUDSON WORK REL	30	28	21	12	15	0	106
MORIAH SHOCK	89	69	30	28	19	1	236
MT MCGREGOR	197	119	76	61	59	15	527
WASHINGTON	637	200	114	58	47	16	1072
HUB SUBTOTAL	3642	1493	795	429	448	225	7032
	51.8%	21.2%	11.3%	6.1%	6.4%	3.2%	100.0%
WENDE HUB							
ALBION FEMALE	262	207	194	151	213	0	1027
ALBION WORK RELEASE	7	6	31	8	8	0	60
ATTICA	796	506	331	215	223	117	2188
BUFFALO WORK RELEASE	56	36	43	30	27	3	195
COLLINS	408	278	206	112	142	53	1199
DOMANDA	540	417	334	201	225	29	1746
GROVELAND	382	276	215	123	177	56	1229
LAKEVIEW SHOCK	239	130	86	24	30	0	509
LAKEVIEW RECP	79	41	28	12	10	0	170
LAKEVIEW SHOCK FEM	33	21	16	19	17	0	106
LAKEVIEW FEM TRANS	2	0	0	2	2	0	6
LAKEVIEW ASAT	84	45	35	19	15	0	198
LAKEVIEW SKU200	75	51	17	12	5	3	163
LIVINGSTON	274	200	153	102	112	20	861
ORLEANS	383	294	217	107	138	35	1176
ROCHESTER	23	18	17	8	9	0	75
WENDE	377	175	126	72	83	77	910
WYOMING	561	348	284	159	195	53	1600
WYOMING ASACTC	18	28	26	15	10	2	99
HUB SUBTOTAL	4599	3079	2359	1391	1641	448	13517
	34.0%	22.8%	17.5%	10.3%	12.1%	3.3%	100.0%
ELMIRA HUB							
AUBURN	676	418	264	142	177	100	1777
BUTLER FEEDER	22	10	13	5	8	1	57
BUTLER ASACTC	50	46	37	15	19	0	167
BUTLER HIN MALE	108	65	56	30	27	1	285
CAYUGA	336	249	161	105	117	36	1004
ELMIRA	713	408	251	161	151	99	1783
FIVE POINTS	481	329	214	117	160	46	1347
FIVE POINTS ICP	8	5	2	1	0	3	19
FIVE POINTS STP	12	5	3	1	1	0	22
MONTREY SHOCK	160	41	23	11	9	2	246
SOUTHPORT	410	219	111	44	57	36	877
HUB SUBTOTAL	2976	1795	1133	630	726	324	7584
	39.2%	23.7%	14.9%	8.3%	9.6%	4.3%	100.0%
NEW YORK CITY HUB							
ARTHURKILL	297	203	147	116	116	63	942
BAYVIEW	41	25	35	31	22	0	154
BAYVIEW WORK RELEASE	53	35	35	32	47	0	202
EDBECOMBE	92	86	73	46	55	7	359
FULTON	57	54	47	25	34	1	216
LINCOLN	71	64	49	36	39	7	266
QUEENSBORO GENERAL	142	105	79	35	41	5	405
SING SING	652	390	268	154	182	88	1736
HUB SUBTOTAL	1405	962	733	475	536	169	4280
	32.8%	22.5%	17.1%	11.1%	12.5%	3.9%	100.0%
GRAND TOTAL	23922	14903	10745	6060	6999	2568	65197
	36.7%	22.9%	16.5%	9.3%	10.7%	3.9%	100.0%

Religious Affiliation

Eighty-seven percent (86.5%) of under custody inmates claimed affiliation with a recognized religion. Over sixty percent (60.7%) belonged to a Christian faith. Fifteen percent (14.5%) affiliated with an Islamic faith and eleven percent (11.2%) with other religions (see Table 8). Thirteen percent (13.5%) either did not claim affiliation with a religion or did not provide information about religious affiliation.²

In recent years, the percentage of the inmate population identifying as Catholic has been decreasing while those identifying as Protestant has been increasing. Due to this trend, last year (as reported in the January 1, 2003 report) inmates identified as Protestant became the largest religious group passing inmates identified as Roman Catholic. The variation across Hubs for Catholic inmates was from 24.4% in the Elmira Hub to 33.7% in the Watertown Hub (see Figure 8). The Clinton Hub had the lowest proportion of inmates identified as Protestant (27.9%) and the Wende Hub had the highest percent (35.1%).

Figure 8
Religious Affiliation



² For additional information on this topic see Religious Affiliation of Undercustody Population (2003) New York State Department of Correctional Services, Albany, New York 12226

Veteran Status

Veterans under custody are eligible for various benefits from the U.S. Veterans Administration and as a result the Department tracks the number of veterans in its custody. The Department operates programs for veterans of military service at several facilities.

The Department had veteran information on 64,474 inmates under custody, of whom 3,407 (5.3%) were veterans of the armed forces. Of the veterans, 2,066 were post-Vietnam War-era veterans and 951 were Vietnam War-era veterans; an additional 199 served prior to Vietnam and for 191 veterans the era of service was unknown (see Table 9). Figure 9 shows the proportion of veterans in each Hub. The distribution of inmates who were veterans ranged from a low of 2.2% in the Watertown Hub to a high of 7.3% in the Sullivan Hub.

Figure 9
Inmate Veterans by Hub

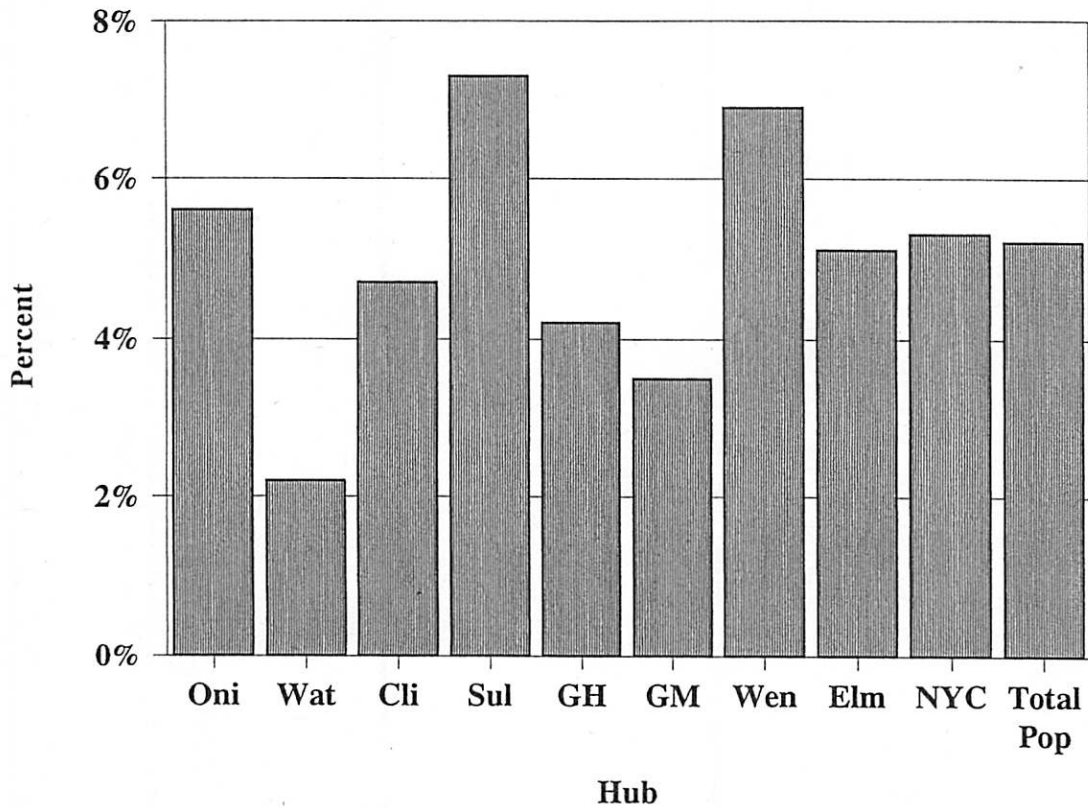


TABLE 9. VETERAN STATUS BY HUB AND FACILITY; UNDERCUSTODY POPULATION JANUARY 1, 2004

HUB AND FACILITY	NOT VETERAN	VETERANS SERVICE ERA UNKNOWN	PREVIETNAM VETERAN	VIETNAM VETERAN	POSTVIETNAM VETERAN	TOTAL
ONEIDA HUB						
CAMP GEORGETOWN	242	0	0	2	8	252
CAMP PHARSALIA	247	0	1	4	5	257
HALE CREEK ASACTC	415	1	0	1	17	434
MARCY	1260	2	8	15	27	1312
MID-STATE	1457	11	9	39	90	1606
MOHAWK	1348	0	10	11	23	1392
ONEIDA	1090	5	5	27	48	1175
SUMMIT SHOCK-M	108	0	0	0	5	113
SUMMIT GENERAL	66	0	0	0	2	68
HUB SUBTOTAL	6233	19	33	99	225	6609
	94.3%	.3%	.5%	1.5%	3.4%	100.0%
WATERTOWN HUB						
CAPE VINCENT	1091	2	0	2	12	1107
GOUVERNEUR	1002	0	1	4	21	1028
OGDENSBURG	587	0	1	5	9	602
RIVERVIEW	1081	2	4	7	15	1109
WATERTOWN	670	1	7	6	7	685
HUB SUBTOTAL	4431	5	7	24	64	4531
	97.8%	.1%	.2%	.5%	1.4%	100.0%
CLINTON HUB						
ADIRONDACK	537	3	1	3	15	559
ALTONA	455	1	1	1	10	468
BARE HILL	1407	7	5	29	47	1695
CAMP GABRIELS	317	0	0	2	5	324
CHATEAUGAY ASACTC	211	1	0	0	1	213
CLINTON	2619	10	12	44	107	2792
FRANKLIN	1620	8	5	21	47	1701
LYON MOUNTAIN	150	1	1	1	7	160
UPSTATE	1159	1	0	3	32	1195
HUB SUBTOTAL	8675	32	25	104	271	9107
	95.3%	.4%	.3%	1.1%	3.0%	100.0%
SULLIVAN HUB						
EASTERN	1107	5	4	19	44	1179
MID-ORANGE	663	4	8	17	25	717
OTISVILLE	532	7	4	19	22	584
SHAWANGUNK	505	3	2	14	23	547
SULLIVAN	717	3	7	20	28	775
ULSTER	665	0	0	6	38	709
WALKKILL	539	1	3	6	24	575
WOODBORNE	704	3	8	20	45	780
HUB SUBTOTAL	5632	26	36	121	251	5866
	92.6%	.4%	.6%	2.1%	4.3%	100.0%
GREEN HAVEN HUB						
BEACON FEMALE	186	0	0	0	2	188
BEDFORD HILLS	802	2	0	0	1	805
DOWNSTATE	1079	5	1	11	43	1139
FISHKILL	1610	9	8	35	43	1705
GREEN HAVEN	1968	10	9	26	61	2074
TACONIC	331	1	0	0	3	335
HUB SUBTOTAL	5976	27	18	72	153	6246
	95.7%	.4%	.3%	1.2%	2.4%	100.0%
GREAT MEADOW HUB						
CAMP MCGREGOR	284	0	0	4	5	293
COXSACKIE	945	2	2	14	20	1003
GREAT MEADOW	1551	5	4	15	45	1620
GREENE	1648	0	1	6	20	1675
HUDSON	421	1	1	12	15	450
HUDSON WORK REL	93	2	0	3	6	104
MORIAH SHOCK	232	0	0	0	3	235
MT MCGREGOR	489	3	1	11	18	522
WASHINGTON	1035	4	1	6	13	1059
HUB SUBTOTAL	6718	17	10	71	145	6961
	96.5%	.2%	.1%	1.0%	2.1%	100.0%
WENDE HUB						
ALBION FEMALE	1008	0	0	0	2	1010
ALBION WORK RELEASE	60	0	0	0	0	60
ATTICA	2010	4	8	54	94	2170
BUFFALO WORK RELEASE	178	0	0	4	10	192
COLLINS	1101	4	2	26	57	1190
GOWANDA	1610	1	5	33	90	1739
GROVELAND	927	19	11	76	189	1222
LAKEVIEW SHOCK	499	0	0	0	10	509
LAKEVIEW RECEP	168	0	0	0	2	170
LAKEVIEW SHOCK FEM	105	0	0	0	0	105
LAKEVIEW FEM TRANS	6	0	0	0	0	6
LAKEVIEW ASAT	193	0	0	0	5	198
LAKEVIEW SHU200	158	1	0	1	3	163
LIVINGSTON	833	0	0	6	18	857
ORLEANS	1113	0	3	22	33	1171
ROCHESTER	68	0	0	3	3	74
WENDE	857	2	7	19	27	892
WYOMING	1510	1	5	20	56	1592
WYOMING ASACTC	96	0	1	0	2	99
HUB SUBTOTAL	12480	32	42	264	601	13419
	93.0%	.2%	.3%	2.0%	4.5%	100.0%
ELMIRA HUB						
AUBURN	1648	4	7	41	58	1758
BUTLER FEEDER	53	0	0	2	2	57
BUTLER ASACTC	159	0	0	0	8	167
BUTLER MIN MALE	274	0	0	4	6	284
CAYUGA	944	1	6	15	29	995
ELMIRA	1640	7	4	39	64	1754
FIVE POINTS	1280	2	0	14	42	1338
FIVE POINTS ICP	19	0	0	0	0	19
FIVE POINTS STP	20	1	0	0	1	22
MONTREY SHOCK	243	0	0	0	3	246
SOUTHPORT	840	3	0	5	20	868
HUB SUBTOTAL	7120	18	17	120	233	7508
	94.8%	.2%	.2%	1.6%	3.1%	100.0%
NEW YORK CITY HUB						
ARTHURKILL	852	5	5	21	41	924
BAYVIEW	150	0	0	0	2	152
BAYVIEW WORK RELEASE	200	0	0	0	0	200
EDGECOMBE	336	0	1	11	8	356
FULTON	213	0	0	1	2	216
LINCOLN	244	1	0	7	10	262
QUEENSBORO GENERAL	385	1	1	4	12	403
SING SING	1622	8	4	32	48	1714
HUB SUBTOTAL	4002	15	11	76	123	4227
	94.7%	.4%	.3%	1.8%	2.9%	100.0%
GRAND TOTAL	61067	191	199	951	2066	64474
	94.7%	.3%	.3%	1.5%	3.2%	100.0%

Section Two

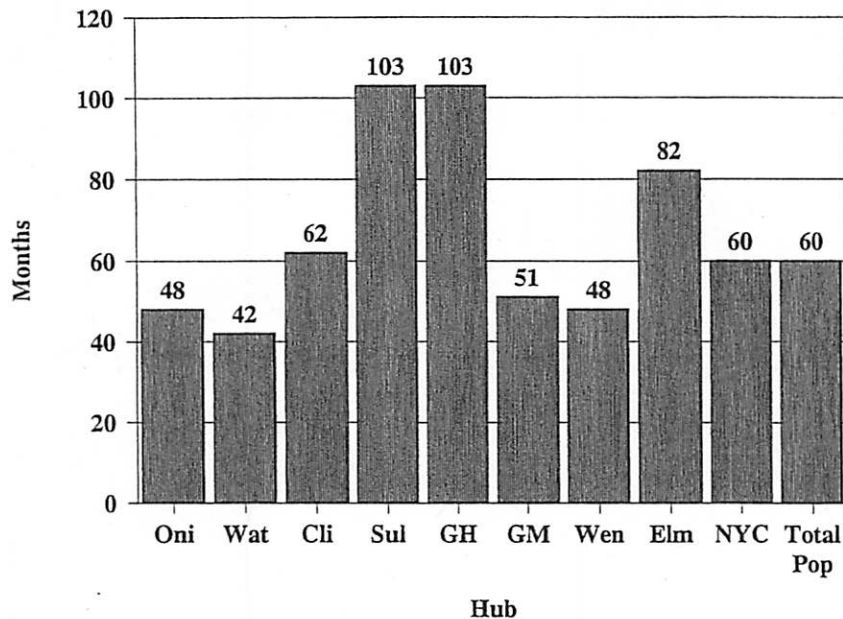
CRIMINAL HISTORY

Minimum Sentence

The median minimum sentence of under custody inmates was 60.0 months (see Table 10A). However, the average minimum sentence length was 101.6 months (over eight years), reflecting the influence of lengthy minimum sentences received by many inmates currently housed in maximum security facilities (see Table 10B).³ Table 10B shows the average and median minimum sentence by facility security level.

There were differences between Hubs in average and median minimum sentence length (see Table 10A and Figure 10), but these differences were partially driven by the number of maximum-security facilities in each Hub. Inmates with long sentences are more likely to be confined in maximum-security facilities. Hubs where the ratio of maximum-security inmates to all other inmates is high will tend to have a higher proportion of inmates with lengthy minimum terms. Median minimum sentence length ranged from 42 months in the Watertown Hub to a high of 103 months in the Sullivan and Green Haven Hubs (see Table 10A and Figure 10). The median minimum sentence for persons in maximum-security facilities was 144 months; and for those in medium security facilities, it was 51 months (see Table 10B). For inmates in minimum-security facilities the median minimum term was 31 months. Table 10C shows the distribution of minimum sentence by facility security level. As of January 1, 2004, there were 124 inmates under custody who had received a sentence of "Life Without Parole" and 6 inmates who had received a death penalty sentence (see table 10).

Figure 10
Median Minimum Sentence



³ The median is a measure of central tendency which represents the value of the middle case (i.e. the case or cases at the 50th percentile) in the distribution of cases. The median is less subject to the influence of extreme values than is the arithmetic average and is preferred by some users for this reason.

TABLE 10A. MINIMUM SENTENCE IN MONTHS, BY HUB AND FACILITY;
UNDERCUSTODY POPULATION JANUARY 1, 2004

HUB AND FACILITY	NUMBER	AVERAGE	MEDIAN
ONEIDA HUB			
CAMP GEORGETOWN	254	40.1	36.0
CAMP PHARSALIA	258	34.8	30.0
HALE CREEK ASACTC	437	45.4	42.0
NARCY	1330	59.5	51.0
MID-STATE	1612	61.2	51.0
MOHAWK	1404	61.0	42.0
ONEIDA	1185	53.1	24.0
SUMMIT SHOCK-M	113	24.1	18.0
SUMMIT GENERAL	68	20.4	18.0
HUB SUBTOTAL	6661	55.5	48.0
WATERTOWN HUB			
CAPE VINCENT	1115	56.0	48.0
GOVERNEUR	1033	60.0	48.0
OGDENSBURG	606	43.2	36.0
RIVERVIEW	1116	56.8	48.0
WATERTOWN	690	45.3	36.0
HUB SUBTOTAL	4560	53.8	42.0
CLINTON HUB			
ADIRONDACK	564	45.3	36.0
ALTONA	475	50.8	42.0
BARE HILL	1719	66.1	54.0
CAMP GABRIELS	324	36.6	31.0
CHATEAUGAY ASACTC	215	46.1	42.0
CLINTON	2843	179.4	120.0
FRANKLIN	1718	62.9	51.0
LYON MOUNTAIN	161	44.6	36.0
UPSTATE	1206	143.0	102.0
HUB SUBTOTAL	9225	106.5	62.0
SULLIVAN HUB			
EASTERN	1189	173.1	180.0
MID-ORANGE	722	122.1	100.0
OTISVILLE	590	129.5	103.0
SHAWANGUNK	560	322.8	300.0
SULLIVAN	788	225.6	180.0
ULSTER	739	56.7	36.0
WALKILL	580	79.9	72.0
WOODBOURNE	792	112.6	100.0
HUB SUBTOTAL	5960	150.1	103.0
GREEN HAVEN HUB			
BEACON FEMALE	190	40.5	30.0
BEDFORD HILLS	827	122.8	84.0
DOWNSTATE	1184	87.5	54.0
FISHKILL	1727	101.5	90.0
GREEN HAVEN	2109	244.8	240.0
TACONIC	341	42.7	36.0
HUB SUBTOTAL	6378	144.7	103.0
GREAT MEADOW HUB			
CAMP MCGREGOR	295	35.3	28.0
COXSACKIE	1018	109.1	102.0
GREAT MEADOW	1641	187.5	144.0
GREENE	1685	43.7	36.0
HUDSON	452	62.6	51.0
HUDSON WORK REL	106	40.5	36.0
MORIAH SHOCK	236	22.9	24.0
MT MCGREGOR	527	68.8	60.0
WASHINGTON	1072	38.4	31.0
HUB SUBTOTAL	7032	87.9	51.0
WENDE HUB			
ALBION FEMALE	1027	41.9	36.0
ALBION WORK RELEASE	60	35.2	30.0
ATTICA	2188	205.9	150.0
BUFFALO WORK RELEASE	195	39.1	36.0
COLLINS	1199	66.9	51.0
GOWANDA	1746	44.6	36.0
GROVELAND	1229	61.6	45.0
LAKEVIEW SHOCK	509	24.3	24.0
LAKEVIEW RECEP	170	23.5	24.0
LAKEVIEW SHOCK FEM	106	22.4	22.5
LAKEVIEW FEM TRANS	6	27.0	27.0
LAKEVIEW ASAT	198	22.2	18.0
LAKEVIEW SHU200	163	62.7	51.0
LIVINGSTON	861	47.8	36.0
ORLEANS	1176	64.2	51.0
ROCHESTER	910	38.2	30.0
WENDE	910	195.5	154.0
WYOMING	1600	60.5	51.0
WYOMING ASACTC	99	47.4	42.0
HUB SUBTOTAL	13517	86.5	48.0
ELHIRA HUB			
AUBURN	1777	179.8	133.0
BUTLER FEEDER	57	35.4	30.0
BUTLER ASACTC	167	33.2	30.0
BUTLER MIN MALE	285	39.4	36.0
CAYUGA	1004	67.2	51.0
ELHIRA	1783	146.8	96.0
FIVE POINTS	1347	132.9	100.0
FIVE POINTS ICP	19	136.2	144.0
FIVE POINTS STP	22	134.9	87.5
MONTEREY SHOCK	246	21.5	19.0
SOUTHPORT	877	169.0	108.0
HUB SUBTOTAL	7584	132.6	82.0
NEW YORK CITY HUB			
ARTHURKILL	942	80.3	60.0
BAYVIEW	154	57.9	49.5
BAYVIEW WORK RELEASE	202	38.6	36.0
EDGECOMBE	359	44.1	36.0
FULTON	216	41.7	36.0
LINCOLN	266	43.5	36.0
QUEENSBORO GENERAL	405	39.7	36.0
SING SING	1736	157.7	154.0
HUB SUBTOTAL	4280	97.8	60.0
GRAND TOTAL	65084	101.6	60.0

TABLE 10B. MINIMUM SENTENCE BY SECURITY LEVEL AND FACILITY;
UNDERCUSTODY POPULATION JANUARY 1, 2004

SECURITY LEVEL	NUMBER	AVERAGE	MEDIAN
MAXIMUM SECURITY			
ATTICA	2188	205.9	150.0
AUBURN	1777	179.8	133.0
BEDFORD HILLS	827	122.8	84.0
CLINTON	2843	179.4	120.0
COXSACKIE	1018	109.1	102.0
DOWNSTATE	1184	87.5	54.0
EASTERN	1011	197.0	180.0
ELHIRA	1783	146.8	96.0
FIVE POINTS	1347	132.9	100.0
FIVE POINTS ICP	19	156.2	144.0
FIVE POINTS STP	22	136.9	87.5
GREAT MEADOW	1641	187.5	144.0
GREEN HAVEN	2055	249.1	240.0
MOHAWK	110	109.4	72.0
SHAWANGUNK	560	322.8	300.0
SING SING	1736	157.7	154.0
SOUTHPORT	877	169.0	108.0
SULLIVAN	553	291.2	264.0
UPSTATE	1206	143.0	102.0
WENDE	910	195.5	154.0
TOTAL	23667	177.2	144.0
MEDIUM SECURITY			
ADIRONDACK	564	45.3	36.0
ALBION FEMALE	1027	41.9	36.0
ALTONA	475	50.8	42.0
ARTHURKILL	942	80.3	60.0
BARE HILL	1719	66.1	54.0
BAYVIEW	154	57.9	49.5
BUTLER ASACTC	167	33.2	30.0
CAPE VINCENT	1115	56.0	48.0
CAYUGA	1004	67.2	51.0
CHATEAUGAY ASACTC	215	46.1	42.0
COLLINS	1199	66.9	51.0
EASTERN	178	37.0	30.0
FISHKILL	1637	105.0	96.0
FRANKLIN	1718	62.9	51.0
GOVERNEUR	1033	60.0	48.0
ROMANDA	1746	44.6	36.0
GREEN HAVEN	54	78.8	66.0
GREENE	1685	43.7	36.0
GROVELAND	1229	61.6	45.0
HALE CREEK ASACTC	437	45.4	42.0
HUDSON	402	67.2	51.0
LAKEVIEW ASAT	198	22.2	18.0
LIVINGSTON	861	47.8	36.0
MARCY	1330	59.5	51.0
MID-ORANGE	722	122.1	100.0
MID-STATE	1441	62.9	51.0
MOHAWK	1294	56.9	51.0
MT MCGREGOR	527	68.8	60.0
ODENSBURG	606	43.2	36.0
ONEIDA	1185	53.1	42.0
ORLEANS	1176	64.2	51.0
OTISVILLE	590	129.5	103.0
RIVERVIEW	1116	56.8	48.0
TACONIC	338	42.7	36.0
ULSTER	739	36.7	36.0
WALLKILL	580	79.9	72.0
WASHINGTON	865	39.7	35.0
WATERTOWN	690	45.3	36.0
WOODBOURNE	792	112.6	100.0
WYOMING	1600	60.5	51.0
WYOMING ASACTC	99	47.4	42.0
TOTAL	35449	62.2	51.0
MINIMUM SECURITY			
ALBION WORK RELEASE	60	35.2	30.0
BAYVIEW WORK RELEASE	202	38.6	36.0
BEACON FEMALE	190	40.5	30.0
BUFFALO WORK RELEASE	195	39.1	36.0
BUTLER FEEDER	57	33.4	30.0
BUTLER MIN MALE	285	39.4	36.0
CAMP GABRIELS	324	36.6	31.0
CAMP GEORGETOWN	254	40.1	36.0
CAMP MCGREGOR	295	35.3	28.0
CAMP PHARSALIA	258	34.8	30.0
EDGECOMBE	359	44.1	36.0
FISHKILL	90	38.7	36.0
FULTON	216	41.7	36.0
HUDSON	50	26.3	22.5
HUDSON WORK REL	106	40.5	36.0
LAKEVIEW SHOCK	509	24.3	24.0
LAKEVIEW RECEP	170	23.5	24.0
LAKEVIEW SHOCK FEM	106	22.4	22.5
LAKEVIEW FEM TRANS	6	27.0	27.0
LAKEVIEW SHU200	163	62.7	51.0
LINCOLN	266	43.5	36.0
LYON MOUNTAIN	161	44.6	36.0
MID-STATE	171	46.5	42.0
MONTEREY SHOCK	246	21.5	19.0
MORIAH SHOCK	236	22.9	24.0
QUEENSBORO GENERAL	405	39.7	36.0
ROCHESTER	75	38.2	30.0
SULLIVAN	235	71.2	72.0
SUMMIT SHOCK-M	113	24.1	24.0
SUMMIT GENERAL	68	20.4	18.0
TACONIC	3	42.0	42.0
WASHINGTON	207	32.7	30.0
TOTAL	6081	37.3	31.0
GRAND TOTAL	65197	101.6	60.0

Commitment Crime

Over a quarter (26.2%) of under custody inmates were committed for drug offenses; 17.7% for robbery (total of Robbery 1st, Robbery 2nd, and Robbery 3rd, see Table 11) and 11.5% for murder (see Table 11). Many inmates were committed for multiple crimes. For those offenders with more than one commitment crime, the crime with the longest maximum term is the crime reflected in Table 11.

Variation in the percent of drug offenders housed at each Hub was considerable; the percents ranged from 17.7% in the Sullivan Hub to 38.2% in the New York City Hub (see Table 11A). Similarly, the percent of inmates that are violent felony offenders ranged from 42.4% in the Oneida Hub to 73.3% in the Sullivan Hub (see Figure 11 and Table 11A).

Figure 11
Violent Felony Offenders

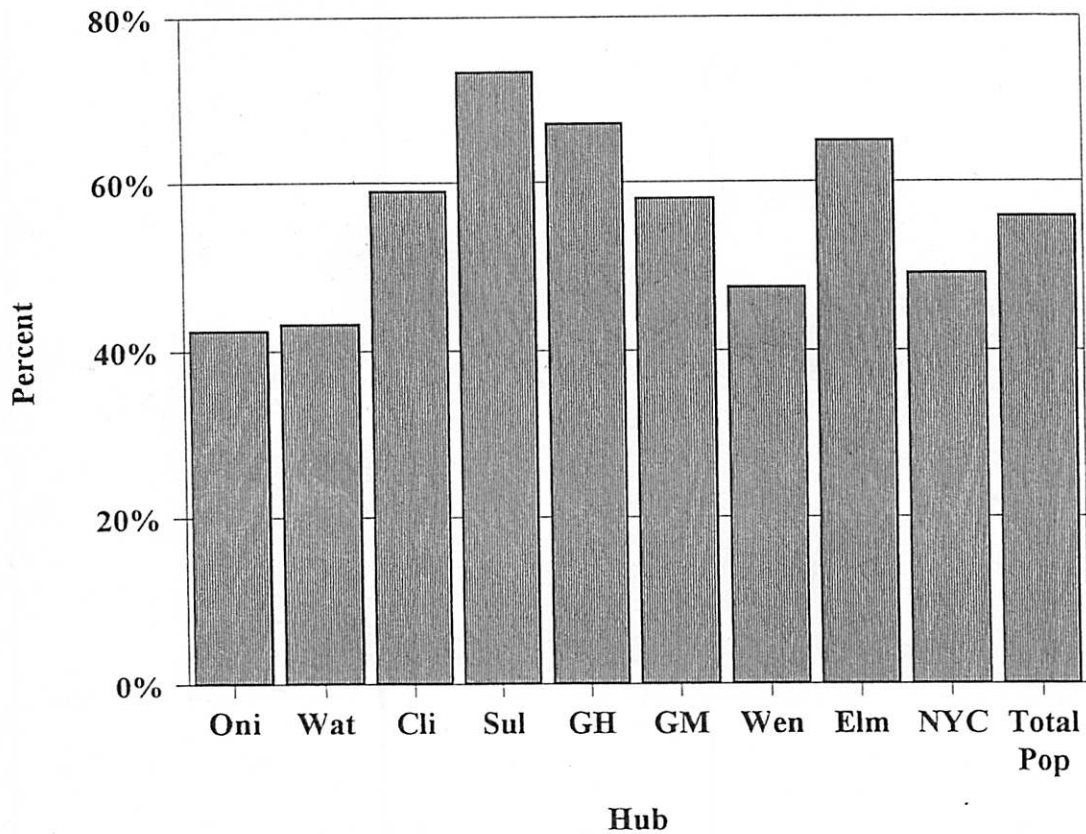


TABLE 11A. CRIME STATUS BY HUB AND FACILITY; UNDERCUSTODY POPULATION JANUARY 1, 2004

HUB AND FACILITY	VIOLENT FELONY	OTHER COERCIVE	DRUG OFFENSES	PROPERTY AND OTHER	YOUTHFUL OFFENDER	JUVENILE OFFENDER	TOTAL
ONEIDA HUB							
CAMP GEORGETOWN	75	11	125	41	2	0	254
CAMP PHARSALIA	60	4	147	45	2	0	258
HALE CREEK ASACTC	42	5	359	31	0	0	437
MARCY	596	92	510	115	12	5	1330
MID-STATE	814	159	462	159	10	8	1612
MOHAWK	672	113	490	125	4	0	1404
ONEIDA	558	159	309	148	8	3	1185
SUNMIT SHOCK	0	7	82	22	2	0	113
SUNMIT GENERAL	6	4	36	17	5	0	68
HUB SUBTOTAL	2823	554	2520	703	48	16	6661
	42.4%	8.3%	37.8%	10.6%	.7%	.2%	100.0%
WATERTOWN HUB							
CAPE VINCENT	507	94	421	85	4	4	1115
GOUVERNEUR	469	71	375	104	7	2	1033
OGDENSBURG	214	61	241	88	2	0	606
RIVERVIEW	529	81	404	91	4	5	1114
WATERTOWN	253	55	290	89	3	0	690
HUB SUBTOTAL	1972	367	1733	457	20	11	4560
	43.2%	8.0%	38.0%	10.0%	.4%	.2%	100.0%
CLINTON HUB							
ADIRONDACK	195	68	206	90	2	3	564
ALTONA	186	52	172	63	0	2	475
BARE HILL	897	160	459	184	5	14	1719
CAMP GABRIELS	83	14	159	63	5	0	324
CHATEAUGAY ASACTC	111	7	84	12	1	0	215
CLINTON	2162	144	365	151	7	14	2843
FRANKLIN	879	149	484	185	4	13	1718
LYON MOUNTAIN	38	6	87	28	1	1	161
UPSTATE	861	48	201	65	7	4	1206
HUB SUBTOTAL	5432	648	2219	841	34	51	9225
	58.9%	7.0%	24.1%	9.1%	.4%	.6%	100.0%
SULLIVAN HUB							
EASTERN	911	23	195	60	0	0	1189
MID-ORANGE	596	30	76	14	0	6	722
OTISVILLE	489	17	66	13	0	5	590
SHAWANGUNK	518	7	32	3	0	0	560
SULLIVAN	612	25	119	30	1	1	788
ULSTER	194	48	387	92	17	1	739
WALKILL	446	32	78	21	0	3	580
WOODBURNE	600	43	103	39	3	4	792
HUB SUBTOTAL	4366	225	1056	272	21	20	5960
	73.3%	3.8%	17.7%	4.6%	.4%	.3%	100.0%
GREEN HAVEN HUB							
BEACON FEMALE	55	15	70	48	1	1	190
BEDFORD HILLS	515	32	199	71	10	0	827
DOWNSTATE	624	75	338	134	12	1	1184
FISHKILL	1163	81	356	113	4	10	1727
GREEN HAVEN	1843	31	196	34	2	1	2109
TACONIC	75	23	188	51	4	0	341
HUB SUBTOTAL	4275	257	1347	453	33	15	6378
	67.0%	4.0%	21.1%	7.1%	.5%	.2%	100.0%
GREAT MEADOW HUB							
CAMP MCGREGOR	91	19	119	61	5	0	295
COXSACKIE	728	34	171	54	27	4	1018
GREAT MEADOW	1264	69	191	94	14	7	1641
GREENE	1018	112	285	104	149	17	1685
HUDSON	210	33	125	77	3	4	452
HUDSON WORK RELEASE	13	5	42	26	0	0	106
MORIAN SHOCK	0	14	169	48	5	1	236
MT MCGREGOR	294	47	137	45	3	5	527
WASHINGTON	466	103	253	140	103	9	1072
HUB SUBTOTAL	4082	436	1512	651	309	42	7032
	58.0%	6.2%	21.5%	9.3%	4.4%	.6%	100.0%
WENDE HUB							
ALBION FEMALE	322	102	398	185	18	2	1027
ALBION WORK RELEASE	6	0	29	25	0	0	60
ATTICA	1736	79	266	90	3	14	2188
BUFFALO WORK RELEASE	33	2	88	71	1	0	195
COLLINS	602	118	327	138	9	5	1199
GOWANDA	602	297	360	471	10	6	1746
GROVELAND	577	145	313	189	3	2	1229
LAKEVIEW SHOCK	0	19	339	99	52	0	509
LAKEVIEW RECEP	0	21	90	46	13	0	170
LAKEVIEW SHOCK FEH	0	4	68	30	4	0	104
LAKEVIEW FEN TRANS	0	0	5	1	0	0	6
LAKEVIEW ASAT	0	40	77	67	14	0	198
LAKEVIEW SHU200	90	11	38	16	6	2	163
LIVINGSTON	331	109	255	153	12	1	861
ORLEANS	586	128	324	129	3	6	1176
ROCHESTER	13	1	26	35	0	0	75
WENDE	727	32	94	49	3	5	919
WYOMING	796	159	441	184	15	5	1600
WYOMING ASACTC	3	1	85	12	0	0	99
HUB SUBTOTAL	6424	1268	3621	1990	166	48	13517
	47.5%	9.4%	26.8%	14.7%	1.2%	.4%	100.0%
ELMIRA HUB							
AUBURN	1382	67	225	84	4	15	1777
BUTLER FEEDER	15	10	19	13	0	0	57
BUTLER ASACTC	31	13	98	23	2	0	167
BUTLER MIN MALE	42	24	131	65	3	0	285
CAYUGA	594	103	235	91	17	4	1004
ELMIRA	1202	107	277	170	20	7	1785
FIVE POINTS	948	62	246	79	4	8	1347
FIVE POINTS ICP	18	1	0	0	0	0	19
FIVE POINTS STP	17	1	0	3	0	1	22
MONTREY SHOCK	0	13	143	41	49	0	246
SOUTHPORT	696	45	89	34	4	9	877
HUB SUBTOTAL	4925	446	1463	603	103	44	7584
	64.9%	5.9%	19.3%	8.0%	1.4%	.6%	100.0%
NEW YORK CITY HUB							
ARTHURKILL	525	64	278	70	4	3	942
BAYVIEW	72	12	45	25	1	1	154
BAYVIEW WORK RELEASE	7	0	144	31	0	0	202
EDGECONBE	23	7	296	32	1	0	359
FULTON	12	3	194	7	0	0	216
LINCOLN	26	5	188	46	0	1	246
QUEENSBORO GENERAL	67	23	241	65	9	0	405
SING SING	1378	56	229	72	7	2	1784
HUB SUBTOTAL	2100	170	1635	344	22	7	4280
	49.1%	4.0%	38.2%	8.1%	.5%	.2%	100.0%
GRAND TOTAL	34399	4571	17106	6316	753	252	65197
	55.8%	6.7%	26.2%	9.7%	1.2%	.4%	100.0%

Second Felony Offender Status

Almost half of the inmates (46.3%) under custody on January 1, 2004 were sentenced as second felony offenders (see Table 12). Fifty percent (49.9%) were first felony offenders and four percent (3.8%) were sentenced as persistent felony offenders. The percent of second felony offenders under custody ranged from 34.0% in the Great Meadow Hub to 59.9% in the Watertown Hub (see Figure 12).

Figure 12
Second Felony Offenders

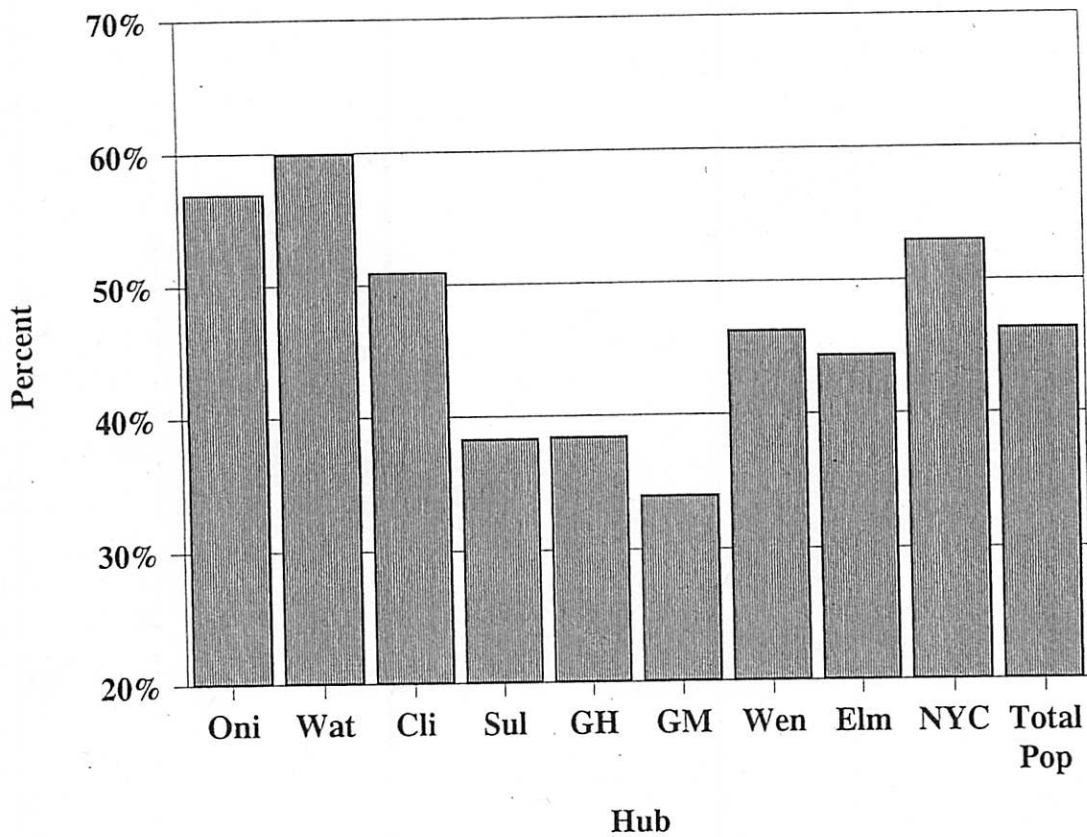


TABLE 12. SECOND FELONY STATUS BY HUB AND FACILITY; UNDERCUSTODY POPULATION JANUARY 1, 2004

HUB AND FACILITY	FIRST FELONY OFFENDER	SECOND FELONY OFFENDER	PERSIST FELONY OFFENDER	TOTAL
ONEIDA HUB				
CAMP GEORGETOWN	73	177	4	254
CAMP PHARSALIA	82	176	0	258
HALE CREEK ASACTC	125	312	0	437
MARCY	543	758	29	1330
MID-STATE	697	882	33	1612
MOHAWK	604	772	28	1404
ONEIDA	514	636	5	1185
SUMMIT SHOCK-M	68	45	0	113
SUMMIT GENERAL	37	31	0	68
HUB SUBTOTAL	2743 41.2%	3789 56.9%	129 1.9%	6661 100.0%
WATERTOWN HUB				
CAPE VINCENT	443	660	12	1115
GOVERNEUR	376	636	21	1033
OGDENSBURG	232	365	9	606
RIVERVIEW	438	657	21	1116
WATERTOWN	269	415	6	690
HUB SUBTOTAL	1758 38.6%	2733 59.9%	69 1.5%	4560 100.0%
CLINTON HUB				
ADIRONDACK	233	326	5	564
ALTONA	182	287	6	475
BARE HILL	740	929	50	1719
CAMP GABRIELS	111	210	3	324
CHATEAUGAY ASACTC	86	129	0	215
CLINTON	1479	1144	220	2843
FRANKLIN	705	970	43	1718
LYON MOUNTAIN	39	121	1	161
UPSTATE	543	584	79	1206
HUB SUBTOTAL	4118 44.6%	4700 50.9%	407 4.4%	9225 100.0%
SULLIVAN HUB				
EASTERN	686	398	105	1189
MID-ORANGE	413	259	50	722
OTISVILLE	359	195	36	590
SHAMANGUNK	406	97	57	560
SULLIVAN	461	261	66	788
ULSTER	290	446	3	739
WALLKILL	251	324	5	580
WOODBOURNE	458	303	31	792
HUB SUBTOTAL	3324 55.8%	2283 38.3%	353 5.9%	5960 100.0%
GREEN HAVEN HUB				
BEACON FEMALE	104	86	0	190
BEDFORD HILLS	569	249	9	827
DOWNSTATE	536	611	37	1184
FISHKILL	877	767	83	1727
GREEN HAVEN	1337	566	206	2109
TACONIC	173	168	0	341
HUB SUBTOTAL	3596 56.4%	2447 38.4%	335 5.3%	6378 100.0%
GREAT MEADOW HUB				
CAMP MCGREGOR	114	179	2	295
COXSACKIE	646	314	58	1018
GREAT MEADOW	932	591	118	1641
GREENE	1344	333	8	1685
HUDSON	245	196	11	452
HUDSON WORK REL	38	68	0	106
MORIAH SHOCK	145	91	0	236
HT MCGREGOR	232	280	15	527
WASHINGTON	732	338	2	1072
HUB SUBTOTAL	4428 63.0%	2390 34.0%	214 3.0%	7032 100.0%
WENDE HUB				
ALBION FEMALE	520	505	2	1027
ALBION WORK RELEASE	31	29	0	60
ATTICA	1140	888	160	2188
BUFFALO WORK RELEASE	98	96	1	195
COLLINS	582	599	18	1199
GOWANDA	998	731	17	1746
GROVELAND	584	634	11	1229
LAKEVIEW SHOCK	374	135	0	509
LAKEVIEW RECEP	116	53	1	170
LAKEVIEW SHOCK FEM	76	30	0	106
LAKEVIEW FEM TRANS	3	3	0	6
LAKEVIEW ASAT	118	80	0	198
LAKEVIEW SHU200	74	86	3	163
LIVINGSTON	356	515	10	861
ORLEANS	552	606	18	1176
ROCHESTER	44	31	0	75
WENDE	548	311	51	910
WYOMING	726	845	29	1600
WYOMING ASACTC	34	65	0	99
HUB SUBTOTAL	6954 51.4%	6242 46.2%	321 2.4%	13517 100.0%
ELMIRA HUB				
AUBURN	918	724	135	1777
BUTLER FEEDER	22	35	0	57
BUTLER ASACTC	56	111	0	167
BUTLER MIN MALE	114	168	3	285
CAYUGA	453	531	20	1004
ELMIRA	962	718	103	1783
FIVE POINTS	612	642	93	1347
FIVE POINTS ICP	12	5	2	19
FIVE POINTS STP	11	8	3	22
MONTEREY SHOCK	195	51	0	246
SOUTHPORT	434	368	75	877
HUB SUBTOTAL	3789 50.0%	3361 44.3%	434 5.7%	7584 100.0%
NEW YORK CITY HUB				
ARTHURKILL	442	474	26	942
BAYVIEW	91	63	0	154
BAYVIEW WORK RELEASE	62	140	0	202
EDGECOMBE	109	249	1	359
FULTON	61	154	1	216
LINCOLN	106	160	0	266
QUEENSBORO GENERAL	106	293	6	405
SING SING	839	736	161	1736
HUB SUBTOTAL	1816 42.4%	2269 55.0%	195 4.6%	4280 100.0%
GRAND TOTAL	32526 49.9%	30214 46.3%	2457 3.8%	65197 100.0%

Prior Adult Criminal Record

Inmates are placed in a category based on their most extensive penetration into the criminal justice system prior to their current incarceration. Thirty-five percent (34.9%) of under custody inmates had served a prior prison term (see Table 13). For twenty-four percent (23.5%), prior jail was the most serious contact with the criminal justice system. Nineteen percent (19.3%) had a prior adult criminal conviction which did not result in jail or prison incarceration. Eight percent (8.0%) had no prior conviction and fourteen percent (14.3%) had no prior arrest.

The percent of inmates with a prior prison term varied from 25.4% in the Great Meadow Hub to 41.5% in the Watertown Hub (see Figure 13). The percent of inmates with no prior arrest ranged from 10.8% in the Elmira Hub to 21.0% in the Green Haven Hub.

Figure 13
Inmates With a Prior Prison Sentence

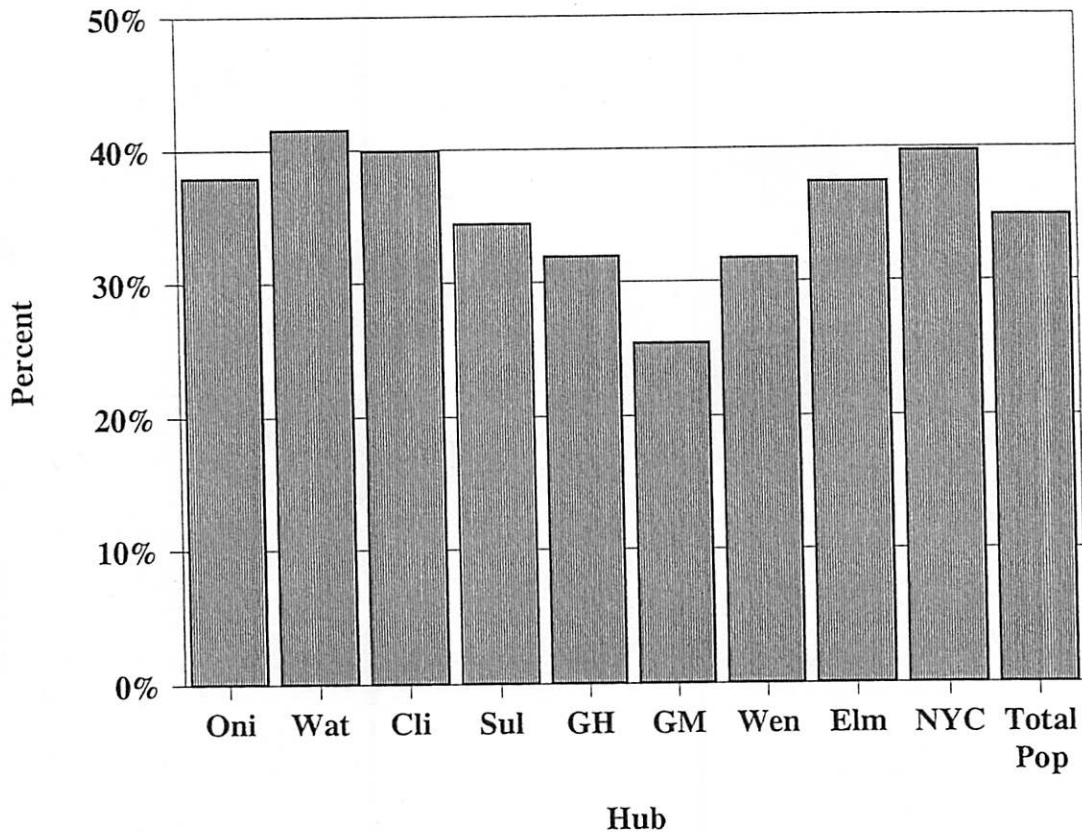


TABLE 13. PRIOR CRIMINAL RECORD BY HUB AND FACILITY; UNDERCUSTODY POPULATION JANUARY 1, 2004

HUB AND FACILITY	NO PRIOR ARREST	NO PRIOR CONVICTION	CONVICTION NO JAIL	PRIOR JAIL TERM	PRIOR PRISON TERM	TOTAL
ONEIDA HUB						
CAMP GEORGETOWN	20	13	33	60	128	254
CAMP PHARSALIA	11	10	47	61	129	258
HALE CREEK ASACT	31	29	78	138	161	437
MARCY	151	101	265	328	485	1330
MID-STATE	192	117	296	390	617	1612
MOHAWK	199	87	239	344	555	1404
ONEIDA	162	82	206	281	494	1185
SUMMIT SHOCK-M	11	15	36	51	15	113
SUMMIT GENERAL	12	4	11	26	0	53
HUB SUBTOTAL	789	458	1211	1679	2524	6661
	11.8%	6.9%	18.2%	25.2%	37.9%	100.0%
WATERTOWN HUB						
CAPE VINCENT	128	84	176	249	478	1115
GOVERNOUR	102	53	181	268	429	1033
OGDENSBURG	71	39	95	146	255	606
RIVERVIEW	121	65	189	269	472	1116
WATERTOWN	84	62	88	129	259	690
HUB SUBTOTAL	506	303	729	1129	1893	4560
	11.1%	6.6%	16.0%	24.8%	41.5%	100.0%
CLINTON HUB						
ADIRONDACK	56	33	113	138	224	564
ALTONA	56	20	97	103	199	475
BARE HILL	203	115	330	427	644	1719
CAMP GABRIELS	35	14	48	66	161	324
CHATEAUGAY ASACT	30	10	34	60	81	215
CLINTON	413	235	526	536	1132	2842
FRANKLIN	111	11	325	395	663	1718
LYON MOUNTAIN	224	5	26	31	88	161
UPSTATE	111	97	205	307	486	1206
HUB SUBTOTAL	1139	640	1704	2063	3678	9224
	12.3%	6.9%	18.5%	22.4%	39.9%	100.0%
SULLIVAN HUB						
EASTERN	241	120	213	220	395	1189
MID-ORANGE	180	65	155	94	228	722
OTISVILLE	124	75	126	88	177	590
SHAWANGUNK	87	58	123	99	193	560
SULLIVAN	120	80	144	121	303	788
ULSTER	70	47	123	207	292	739
WALKILL	95	42	119	119	207	580
WOODBOURNE	171	105	154	111	253	792
HUB SUBTOTAL	1086	590	1177	1059	2048	5960
	18.2%	9.9%	19.7%	17.8%	34.4%	100.0%
GREEN HAVEN HUB						
BEACON FEMALE	56	9	45	34	46	190
BEDFORD HILLS	294	57	149	184	134	818
DOWNSTATE	215	46	249	256	396	1162
FISHKILL	319	132	325	337	614	1727
GREEN HAVEN	376	193	419	360	761	2109
TACONIC	74	20	64	108	75	341
HUB SUBTOTAL	1334	457	1251	1279	2026	6347
	21.0%	7.2%	19.7%	20.2%	31.9%	100.0%
GREAT MEADOW HUB						
CAMP MCGREGOR	32	19	45	70	129	295
COXSACKIE	207	118	203	233	257	1018
GREAT MEADOW	221	138	304	370	608	1641
GREENE	419	328	319	423	196	1685
HUDSON	43	31	95	114	149	452
HUDSON WORK REL	8	6	22	19	51	106
MORIAN SHOCK	30	19	82	103	2	236
MT MCGREGOR	80	30	103	123	191	527
WASHINGTON	216	128	231	297	200	1072
HUB SUBTOTAL	1276	817	1404	1752	1783	7032
	18.1%	11.6%	20.0%	24.9%	25.4%	100.0%
WENDE HUB						
ALBION FEMALE	238	46	225	261	257	1027
ALBION WORK RELEASE	12	3	18	20	7	60
ATTICA	232	178	398	460	920	2188
BUFFALO WORK RELEASE	8	11	53	65	58	195
COLLINS	168	80	260	314	377	1199
GOMANDA	205	126	385	513	517	1746
GROVELAND	167	95	276	257	454	1229
LAKEVIEW SHOCK	108	67	139	190	5	509
LAKEVIEW RECEP	16	24	53	71	6	170
LAKEVIEW SHOCK FEM	27	11	31	34	3	106
LAKEVIEW FEM TRANS	1	0	1	3	1	6
LAKEVIEW ASAT	30	13	50	90	15	198
LAKEVIEW SHU200	22	15	28	48	50	163
LIVINGSTON	57	44	177	279	304	861
ORLEANS	123	107	226	317	403	1176
ROCHESTER	4	5	20	26	20	75
WENDE	121	106	173	211	299	910
WYOMING	173	137	300	416	574	1600
WYOMING ASACT	11	8	21	28	31	99
HUB SUBTOTAL	1723	1076	2834	3603	4281	13517
	12.7%	8.0%	21.0%	26.7%	31.7%	100.0%
ELMIRA HUB						
AUBURN	184	140	346	389	718	1777
BUTLER FEEDER	6	3	11	21	16	57
BUTLER ASACT	10	4	39	49	65	167
BUTLER MIN MALE	22	13	47	78	125	285
CAYUGA	101	73	224	242	364	1004
ELMIRA	235	171	369	377	630	1782
FIVE POINTS	134	81	239	335	558	1347
FIVE POINTS ICP	3	2	6	2	6	19
FIVE POINTS STP	2	7	5	1	7	22
MONTEREY SHOCK	44	33	73	94	2	246
SOUTHPORT	76	82	169	207	343	877
HUB SUBTOTAL	817	609	1528	1795	2834	7583
	10.8%	8.0%	20.2%	23.7%	37.4%	100.0%
NEW YORK CITY HUB						
ARTHURKILL	163	69	198	193	319	942
BAYVIEW	50	6	31	33	34	154
BAYVIEW WORK RELEASE	36	4	36	50	76	202
EDGECOMBE	38	22	72	101	126	359
FULTON	20	7	40	65	84	216
LINCOLN	43	11	47	78	87	266
QUEENSBORO GENERAL	24	23	55	107	196	405
SING SING	253	108	278	320	777	1736
HUB SUBTOTAL	627	250	757	967	1699	4280
	14.6%	5.8%	17.7%	22.1%	39.7%	100.0%
GRAND TOTAL	9297	5200	12595	15306	22766	65164
	14.3%	8.0%	19.3%	23.5%	34.9%	100.0%

Length of Time Served at Current Holding Facility

The average length of time served at the current facility was 15.8 months and the median was 7.2 months (see Table 14A). Average time served at current facility ranged from 10.3 months in the Watertown Hub to 26.2 months in the Green Haven Hub. The median time at current holding facility ranged from 4.9 months in the New York City Hub to 12.5 months in the Sullivan Hub (see figure 14). Information on length of time served at current holding facility is useful to facility staff when planning inmate program assignments. Staff use this information to help design assignments that minimize the risk of disruption to the inmate's program plan due to transfer or release.

Figure 14
Median Time Served At Current Facility

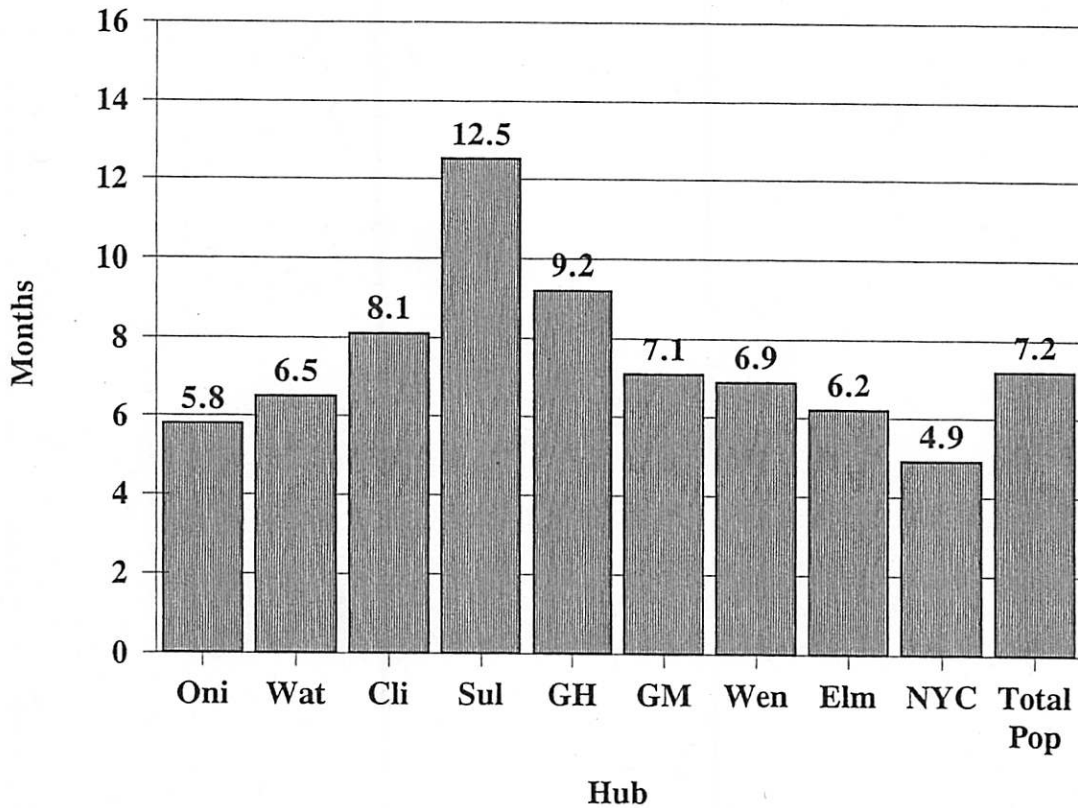


TABLE 14A. TIME SERVED AT CURRENT FACILITY IN MONTHS, BY HUB AND FACILITY;
UNDERCUSTODY POPULATION JANUARY 1, 2004

HUB AND FACILITY	NUMBER	AVERAGE	MEDIAN
ONEIDA HUB			
CAMP GEORGETOWN	254	7.0	5.4
CAMP PHARSALIA	258	6.3	4.2
HALE CREEK ASACTC	437	2.7	2.4
MARCY	1330	11.3	5.8
MID-STATE	1612	12.4	7.9
MOHAWK	1404	12.5	7.6
ONEIDA	1185	11.2	5.9
SUMMIT SHOCK-M	113	3.1	3.7
SUMMIT GENERAL	68	5.8	5.3
HUB SUBTOTAL	6661	10.7	5.8
WATERTOWN HUB			
CAPE VINCENT	1115	11.3	7.6
GOVERNEUR	1033	10.4	6.2
OGDENSBURG	606	7.9	5.2
RIVERVIEW	1116	10.3	6.2
WATERTOWN	690	10.7	6.9
HUB SUBTOTAL	4560	10.3	6.5
CLINTON HUB			
ADIRONDACK	564	9.2	5.8
ALTONA	475	10.6	7.1
BARE HILL	1719	15.5	10.6
CAMP GABRIELS	324	7.2	5.0
CHATEAUGAY ASACTC	215	4.2	3.5
CLINTON	2843	20.2	9.1
FRANKLIN	1718	14.3	10.0
LYON MOUNTAIN	161	9.0	6.2
UPSTATE	1206	10.1	5.7
HUB SUBTOTAL	9225	14.7	8.1
SULLIVAN HUB			
EASTERN	1189	30.9	15.2
MID-ORANGE	722	25.6	17.0
OTISVILLE	590	23.8	16.9
SHAMANSUNK	560	41.2	25.6
SULLIVAN	788	29.8	16.8
ULSTER	739	1.7	.4
WALLKILL	580	19.4	10.4
WOODBOURNE	792	22.5	14.1
HUB SUBTOTAL	5960	24.5	12.5
GREEN HAVEN HUB			
BEACON FEMALE	190	7.9	4.8
BEDFORD HILLS	827	36.2	13.2
DOWNSTATE	1184	7.3	.8
FISHKILL	1727	18.3	8.6
GREEN HAVEN	2109	43.9	25.4
TACONIC	341	7.9	4.4
HUB SUBTOTAL	6378	26.2	9.2
GREAT MEADOW HUB			
CAMP MCGREGOR	295	6.7	4.6
COXSACKIE	1018	14.1	8.6
GREAT MEADOW	1641	18.7	9.5
GREENE	1685	12.8	7.6
HUDSON	452	12.4	7.7
HUDSON WORK REL	106	5.0	3.3
MORIAH SHOCK	236	3.0	3.2
MT MCGREGOR	527	10.2	8.1
WASHINGTON	1072	8.6	5.6
HUB SUBTOTAL	7032	12.8	7.1
WENDE HUB			
ALBION FEMALE	1027	12.6	8.1
ALBION WORK RELEASE	60	5.2	3.2
ATTICA	2188	26.2	10.4
BUFFALO WORK RELEASE	195	4.9	3.7
COLLINS	1199	17.3	8.0
GOWANDA	1746	10.6	6.9
GROVELAND	1229	14.0	8.8
LAKEVIEW SHOCK	509	3.3	3.3
LAKEVIEW RECEP	170	1.3	.2
LAKEVIEW SHOCK FEM	106	3.6	3.9
LAKEVIEW FEM TRANS	6	.0	.0
LAKEVIEW ASAT	198	1.5	1.4
LAKEVIEW SHU200	163	3.1	1.6
LIVINGSTON	861	6.2	4.2
ORLEANS	1176	14.0	8.6
ROCHESTER	75	5.5	3.8
WENDE	910	23.0	12.3
WYOMING	1600	14.1	8.7
WYOMING ASACTC	99	3.1	3.3
HUB SUBTOTAL	13517	14.6	6.9
ELMIRA HUB			
AUBURN	1777	24.0	8.8
BUTLER FEEDER	57	4.8	4.2
BUTLER ASACTC	167	3.4	3.5
BUTLER MIN MALE	285	7.0	3.7
CAYUGA	1004	14.3	7.4
ELMIRA	1783	15.6	5.9
FIVE POINTS	1347	10.2	7.0
FIVE POINTS ICP	19	11.1	6.8
FIVE POINTS STP	22	5.7	3.8
MONTEREY SHOCK	246	2.5	2.1
SOUTHPORT	877	13.2	5.6
HUB SUBTOTAL	7584	15.0	6.2
NEW YORK CITY HUB			
ARTHURKILL	942	14.8	9.2
BAYVIEW	154	12.8	6.3
BAYVIEW WORK RELEASE	202	4.4	3.1
EDGECOMBE	359	4.2	3.0
FULTON	216	3.1	1.9
LINCOLN	266	5.1	3.5
QUEENSBORO GENERAL	405	.7	.7
SING SING	1736	24.6	9.2
HUB SUBTOTAL	4280	14.8	4.9
GRAND TOTAL	65183	15.8	7.2

Length of Time in Department Custody

Inmates held under custody on January 1, 2004 had spent on average 50.3 months in DOCS since their latest admission date (see Table 15A). The median length of time was 25.3 months. Table 15 shows that 15,663 (24.0%) had spent 72 months or more under custody as of January 1, 2004 and 6,292 (9.7%) had spent less than 3 months under custody as of that date. Inmates in the Sullivan Hub had served the longest since last admission date (median 71.9 months) and Watertown Hub had the lowest median time served (13.4 months).

The 15,663 inmates who have been held under custody for 72 months or more is a general indicator of the current "long term" population who have been held in New York State correctional facilities. Long term inmates may require a somewhat different sequence (or mix) of education, vocational training, and work assignment than would be true for other inmates with comparatively shorter sentences.

Figure 15
Median Time Served In DOCS Custody
Since Last Admission Date

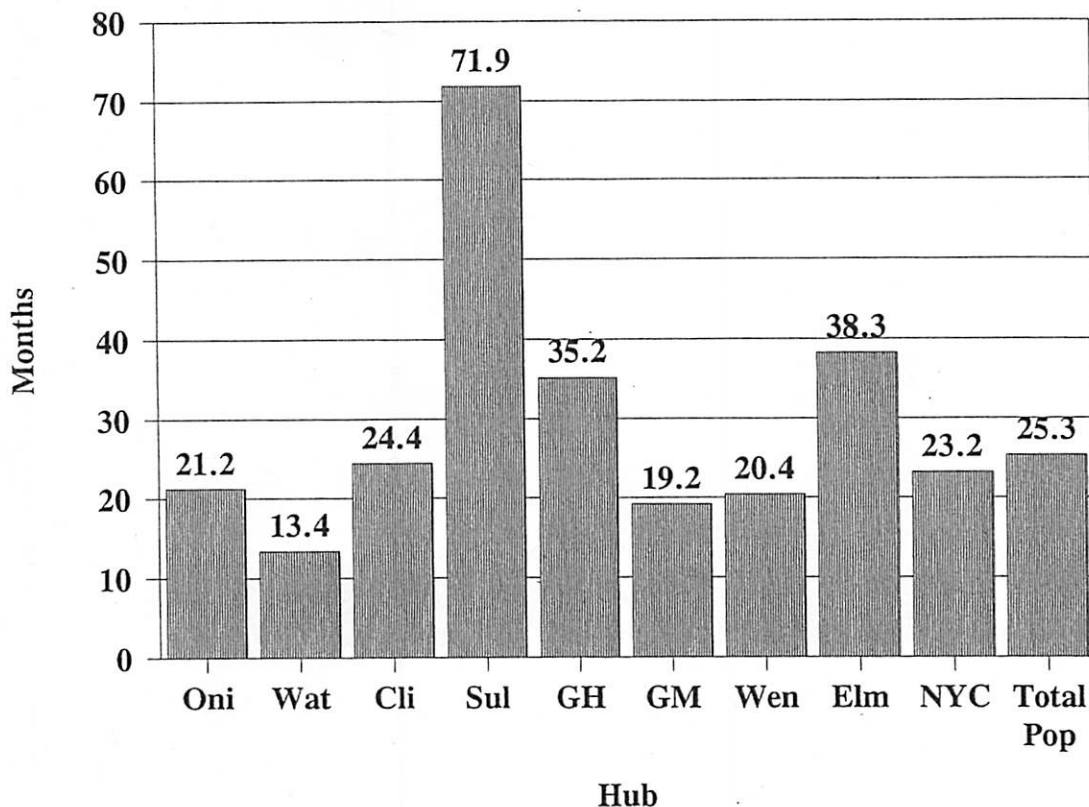


TABLE 15A. TIME SERVED IN DOCS CUSTODY IN MONTHS, BY HUB AND FACILITY;
UNDERCUSTODY POPULATION JANUARY 1, 2004

HUB AND FACILITY	NUMBER	AVERAGE	MEDIAN
ONEIDA HUB			
CAMP GEORGETOWN	254	32.0	25.8
CAMP PHARSALIA	258	23.2	13.9
HALE CREEK ASACTC	437	18.4	14.4
MARCY	1330	41.2	22.4
MID-STATE	1612	44.7	27.3
MOHAWK	1404	38.3	21.1
ONEIDA	1185	38.9	21.1
SUMMIT SHOCK-M	113	4.0	4.4
SUMMIT GENERAL	68	6.7	5.8
HUB SUBTOTAL	6661	37.5	21.2
WATERTOWN HUB			
CAPE VINCENT	1115	32.6	17.6
GOVERNEUR	1033	37.2	15.6
OGDENSBURG	606	19.9	7.8
RIVERVIEW	1116	33.1	13.2
WATERTOWN	690	24.9	11.5
HUB SUBTOTAL	4560	30.9	13.4
CLINTON HUB			
ADIRONDACK	564	23.0	8.5
ALTONA	475	30.2	11.7
BARE HILL	1719	45.8	25.2
CAMP GABRIELS	324	25.6	21.3
CHATEAUGAY ASACTC	215	21.9	14.9
CLINTON	2843	58.7	33.0
FRANKLIN	1718	40.4	21.0
LYON MOUNTAIN	161	28.0	19.8
UPSTATE	1206	58.6	42.0
HUB SUBTOTAL	9225	46.7	24.4
SULLIVAN HUB			
EASTERN	1189	83.0	63.8
MID-ORANGE	722	125.7	112.5
OTISVILLE	590	131.7	118.2
SHAWANGUNK	560	112.9	100.0
SULLIVAN	788	95.0	81.1
ULSTER	739	6.6	.8
WALLKILL	580	84.2	66.2
WOODBOURNE	792	93.9	74.3
HUB SUBTOTAL	5960	89.5	71.9
GREEN HAVEN HUB			
BEACON FEMALE	190	30.2	13.7
BEDFORD HILLS	827	40.9	17.5
DOWNSTATE	1184	11.5	1.2
FISHKILL	1727	80.2	59.4
GREEN HAVEN	2109	82.9	68.8
TACONIC	341	24.6	8.4
HUB SUBTOTAL	6378	58.8	35.2
GREAT MEADOW HUB			
CAMP MCGREGOR	295	25.1	17.8
COXSACKIE	1018	36.2	19.8
GREAT MEADOW	1641	70.8	47.8
GREENE	1685	20.8	12.1
HUDSON	452	59.1	33.5
HUDSON WORK REL	106	28.0	23.8
MORIAH SHOCK	236	4.0	3.9
MT MCGREGOR	527	47.5	30.0
WASHINGTON	1072	18.8	11.0
HUB SUBTOTAL	7032	38.6	19.2
WENDE HUB			
ALBION FEMALE	1027	23.5	13.2
ALBION WORK RELEASE	60	22.1	17.0
ATTICA	2188	77.9	59.6
BUFFALO WORK RELEASE	195	28.0	21.0
COLLINS	1199	48.8	20.9
GOWANDA	1746	30.9	15.1
GROVELAND	1229	51.4	25.1
LAKEVIEW SHOCK	509	5.1	5.0
LAKEVIEW RECEP	170	3.2	1.0
LAKEVIEW SHOCK FEM	106	4.9	4.8
LAKEVIEW FEM TRANS	6	1.1	.8
LAKEVIEW ASAT	198	2.8	2.3
LAKEVIEW SHU200	163	39.9	25.3
LIVINGSTON	861	23.3	9.0
ORLEANS	1176	48.6	25.6
ROCHESTER	75	30.1	24.2
WENDE	910	81.6	58.4
WYOMING	1600	41.9	18.6
WYOMING ASACTC	99	20.9	14.4
HUB SUBTOTAL	13517	45.2	20.4
ELMIRA HUB			
AUBURN	1777	80.8	63.1
BUTLER FEEDER	57	15.3	11.0
BUTLER ASACTC	167	14.2	9.2
BUTLER MIN MALE	285	30.9	23.7
CAYUGA	1004	50.6	30.8
ELMIRA	1783	62.5	40.8
FIVE POINTS	1347	43.9	23.8
FIVE POINTS ICP	19	43.9	41.2
FIVE POINTS STP	22	22.3	13.5
MONTEREY SHOCK	246	3.6	3.3
SOUTHPORT	877	87.7	76.2
HUB SUBTOTAL	7584	60.5	38.3
NEW YORK CITY HUB			
ARTHURKILL	942	67.2	36.9
BAYVIEW	154	44.4	21.7
BAYVIEW WORK RELEASE	202	22.5	19.4
EDGECOMBE	359	27.8	20.9
FULTON	216	25.4	21.6
LINCOLN	266	29.3	22.6
QUEENSBORO GENERAL	405	19.0	9.3
SING SING	1736	60.1	34.3
HUB SUBTOTAL	4280	49.1	23.2
GRAND TOTAL	65197	50.3	25.3

Time to Earliest Release Eligibility

Time to earliest release date is a measure of the earliest possible date at which the inmate can be legally released. Inmates are not necessarily released on this date because the parole board may require the inmate to remain in prison beyond the earliest legal release date, or, the inmate may lose good time due to poor discipline and thus remain in prison longer.

Table 16A shows that the "average time to earliest release" for the total under custody population on January 1, 2004 was 47.4 months, and the "median time to earliest release" was 16.9 months.

The range of median time to serve across the Hubs was considerable. In the Watertown Hub, the median time to earliest release was just 12.9 months. However, in the Green Haven Hub it was 33.4 months (see Figure 16). Figures on average time to earliest release showed even wider variation: 17.1 months in the Oneida Hub and 75.2 months in the Green Haven Hub.

Figure 16
Median Time To Earliest Release Date

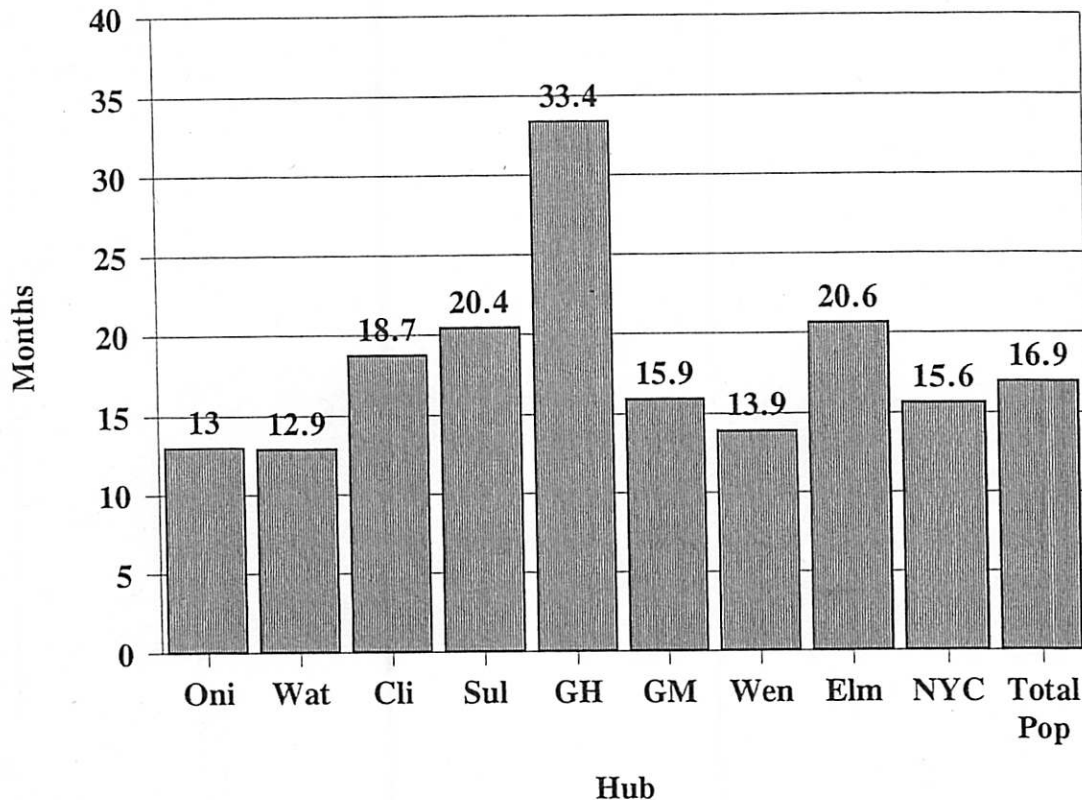


TABLE 16A. TIME TO EARLIEST RELEASE BY HUB AND FACILITY;
UNDERCUSTODY POPULATION JANUARY 1, 2004

HUB AND FACILITY	NUMBER	AVERAGE	MEDIAN
ONEIDA HUB			
CAMP GEORGETOWN	254	7.5	5.9
CAMP PHARSALIA	258	9.2	8.1
HALE CREEK ASACTC	437	22.4	22.8
MARCY	1330	17.5	14.6
MID-STATE	1612	17.1	13.5
MOHAWK	1404	20.0	13.9
ONEIDA	1185	15.3	10.4
SUMMIT SHOCK	113	16.7	15.8
SUMMIT GENERAL	68	10.4	10.6
HUB SUBTOTAL	6661	17.1	13.0
WATERTOWN HUB			
CAPE VINCENT	1115	18.0	14.4
GOVERNEUR	1033	17.8	13.1
OGDENSBURG	606	14.8	10.3
RIVERVIEW	1116	19.3	14.4
WATERTOWN	690	15.0	10.7
HUB SUBTOTAL	4560	17.4	12.9
CLINTON HUB			
ADIRONDACK	564	14.7	11.0
ALTONA	475	15.0	11.1
BARE HILL	1719	19.5	13.9
CAMP GABRIELS	324	7.6	6.7
CHATEAUGAY ASACTC	215	18.4	18.5
CLINTON	2843	113.8	59.8
FRANKLIN	1718	19.9	15.6
LYON MOUNTAIN	161	13.9	11.9
UPSTATE	1206	82.5	32.6
HUB SUBTOTAL	9225	55.6	18.7
SULLIVAN HUB			
EASTERN	1189	79.9	32.1
MID-ORANGE	722	16.2	13.9
OTISVILLE	590	15.6	12.9
SHAWANGUNK	560	193.4	156.9
SULLIVAN	788	119.4	32.6
ULSTER	739	16.4	12.5
WALLKILL	580	11.6	9.9
WOODBOURNE	792	25.5	18.5
HUB SUBTOTAL	5960	59.9	20.4
GREEN HAVEN HUB			
BEACON FEMALE	190	9.7	6.8
BEDFORD HILLS	827	67.0	34.9
DOWNSTATE	1184	59.5	31.9
FISHKILL	1727	22.5	15.9
GREEN HAVEN	2109	145.9	118.4
TACONIC	341	15.6	12.9
HUB SUBTOTAL	6378	75.2	33.4
GREAT MEADOW HUB			
CAMP MCGREGOR	295	8.7	7.4
COXSACKIE	1018	66.5	64.9
GREAT MEADOW	1441	106.6	48.1
GREENE	1685	18.9	14.4
HUDSON	452	11.6	9.9
HUDSON WORK RELEASE	106	9.2	9.4
MORIAN SHOCK	236	15.1	14.2
MT MCGREGOR	527	21.3	15.0
WASHINGTON	1072	16.0	11.5
HUB SUBTOTAL	7032	44.7	15.9
WENDE HUB			
ALBION FEMALE	1027	14.8	10.0
ALBION WORK RELEASE	60	10.1	10.7
ATTICA	2188	125.2	58.9
BUFFALO WORK RELEASE	195	8.0	6.2
COLLINS	1199	17.6	12.6
GOWANDA	1746	14.3	10.0
GROVELAND	1229	13.2	9.9
LAKEVIEW SHOCK	509	13.6	12.5
LAKEVIEW RECEP	170	15.9	14.6
LAKEVIEW SHOCK FEM	106	11.2	8.0
LAKEVIEW FEM TRANS	6	22.1	22.3
LAKEVIEW ASAT	198	14.1	12.4
LAKEVIEW SHU200	163	23.2	12.9
LIVINGSTON	861	17.4	11.9
ORLEANS	1176	18.0	12.9
ROCHESTER	75	7.9	6.2
WENDE	910	103.1	49.6
WYONING	1600	18.3	13.9
WYONING ASACTC	99	21.7	22.3
HUB SUBTOTAL	13517	39.3	13.9
ELMIRA HUB			
AUBURN	1777	92.3	42.1
BUTLER FEEDER	57	13.9	13.7
BUTLER ASACTC	167	15.1	13.4
BUTLER MIN MALE	285	9.2	7.4
CAYUGA	1004	19.0	13.3
ELMIRA	1783	79.1	23.9
FIVE POINTS	1347	81.9	35.8
FIVE POINTS ICP	19	49.8	21.9
FIVE POINTS STP	22	72.7	39.8
MONTEREY SHOCK	246	14.5	13.6
SOUTHPORT	877	86.4	23.0
HUB SUBTOTAL	7584	68.8	20.6
NEW YORK CITY HUB			
ARTHURKILL	942	16.5	14.8
BAYVIEW	154	14.0	11.9
BAYVIEW WORK RELEASE	202	10.8	10.9
EDGECOMBE	359	9.2	8.2
FULTON	216	10.4	10.7
LINCOLN	266	8.4	6.4
QUEENSBORO GENERAL	405	.7	.6
SING SING	1736	84.5	78.6
HUB SUBTOTAL	4280	40.8	15.6
GRAND TOTAL	64751	47.4	16.9

Section Three

PROGRAM RELEVANT CHARACTERISTICS

Reading Proficiency

The Department's education program objective is to encourage every inmate to pass a high school equivalency General Education Diploma (GED) test while incarcerated. Testing and education programming are used by the Department to track the academic level of inmates in reading and mathematics. In order to take the GED examination the Department requires inmates to take tests demonstrating at least a ninth grade level in reading and mathematics.⁴ Directive 4804 detailing Departmental educational policy was reissued on April 18, 2001, it increased the reading level requirements for the GED exam from 8th grade to 9th grade. This directive requires most inmates to be placed in educational programming until reading levels are tested at the 9th grade level.

Data on reading proficiency and academic degree status were taken from a data file compiled on January 10, 2004. The number of cases on these educational tables (N=64,966) is slightly different than that for earlier tables (e.g. 65,197 in Table 1). The data is presented for total inmates for all examinations (Table 17), English language examinations (Table 17A) and Spanish language examinations (Table 17B). Inmates with reading levels in the 0 – 4th grade range require adult basic education (ABE) courses. Inmates in the 5 – 8th grade range require course work to improve their test scores before being eligible for the GED examinations. Inmates in the 9 – 12th grade category are eligible to take the GED examinations. Inmates must score ninth grade level or above in both reading and math before being eligible to take the GED exam.

Table 17 shows that of the 64,966 inmates under custody on January 10, 2004, 31,452 (48.4%) had a verified GED, high school diploma or higher degree, and 33,514 (51.6%) were without academic degrees. Not eligible to take a GED exam were 8,779 inmates (13.5%) whose reading ability was below the fifth grade level, and 14,683 inmates (22.6%) whose reading ability was below the ninth grade level. These inmates require additional services in order to qualify to take a GED exam.

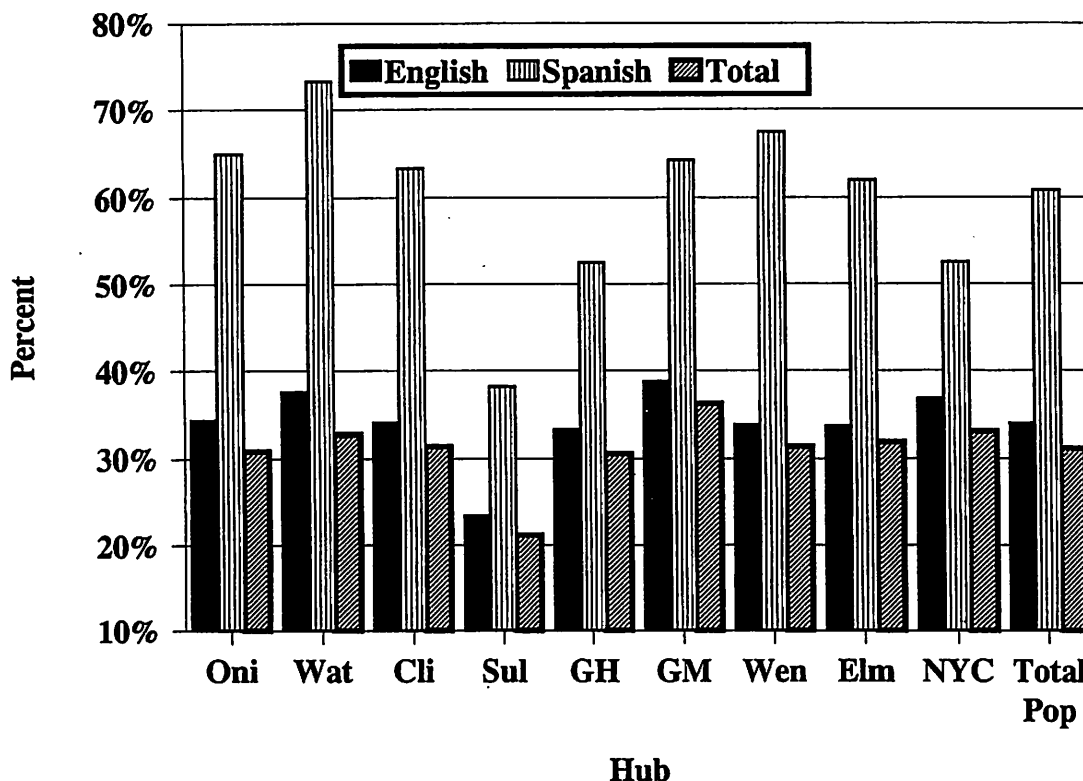
The percent of inmates in each HUB whose reading ability level was eighth grade or below is presented in Figure 17. Sullivan Hub had the lowest percent of inmates reading below the ninth grade level (24.8%). Watertown Hub had the highest percent of inmates reading below the ninth grade level (42.1%).

Table 17A shows the reading level test results for inmates taking English reading tests. This group of inmates was comprised of those with their highest test score on the English reading test, those with no preference for English or other languages and no language preference recorded. Of these inmates, 30,010 (50.4%) had a verified GED, high school diploma, or higher degree. Of the remaining 29,549 inmates, 8,498 can read at the ninth grade level or above and are eligible to take a GED examination. There were 20,177 inmates reading below the ninth grade level and required to take additional education courses to be eligible for the GED examination. English reading level results ranged from 23.4% reading below ninth grade level at the Sullivan Hub to 38.7% at the Great Meadow Hub.

⁴ see Department Directive #4804, NY DOCS, Albany, N.Y. 12226

Table 17B shows the reading level for the Spanish dominant inmates under custody on January 10, 2004. Of the 5,407 Spanish dominant inmates, 1,442 (26.7%) had a verified diploma from a high school or a degree beyond the high school level. Of the remaining 3,965 inmates, 626 could read in Spanish at a ninth grade level or above and according to Departmental policy were eligible to take the General Education Diploma (GED).⁵ Inmates who are unable to take the GED in English may take a Spanish language GED test. Table 17B shows that there were 3,285 Spanish dominant inmates who read below the ninth grade level and required additional education services to qualify to take a GED exam. There were an additional 54 inmates missing test data who still need to complete a Spanish reading test to determine their reading level. Spanish reading level results were lowest with 38.1% of inmates in Sullivan Hub reading below ninth grade level and highest with 73.2% in the Watertown Hub.

Figure 17
Reading Level: 8th Grade or Below



⁵ Department Directive # 4804.

TABLE 17. READING LEVEL AND DIPLOMA STATUS BY HUB AND FACILITY;
UNDERCUSTODY POPULATION JANUARY 10, 2004

HUB AND FACILITY	COMBINED READING LEVEL AND HIGH SCHOOL DIPLOMA STATUS					TOTAL
	0 - 4TH GRADE	5TH - 8TH	9TH - 12	MISSING TEST DATA	VERIFIED HS DIPLOMA OR DEGREE	
ONEIDA HUB						
CAMP GEORGETOWN	19	62	43	0	124	248
CAMP PHARSALIA	36	71	55	3	89	254
HALE CREEK ASACTC	48	114	46	2	207	417
MARCY	223	302	212	7	598	1342
MID-STATE	253	337	218	11	782	1601
MOHAWK	273	331	207	34	553	1398
ONEIDA	79	236	144	12	713	1184
SUMMIT SHOCK-H	16	46	26	1	24	113
SUMMIT GENERAL	6	22	13	0	23	66
HUB SUBTOTAL	953	1521	964	70	3113	6621
	14.4%	23.0%	14.6%	1.1%	47.0%	100.0%
WATERTOWN HUB						
CAPE VINCENT	157	277	145	10	524	1115
GOVERNEUR	142	275	148	5	461	1031
ODDENSBURG	106	169	85	6	234	598
RIVERVIEW	168	301	143	4	494	1110
WATERTOWN	125	203	73	17	301	719
HUB SUBTOTAL	698	1225	592	42	2014	4571
	15.3%	26.8%	13.0%	.9%	44.1%	100.0%
CLINTON HUB						
ADIRONDACK	84	156	70	5	273	568
ALTONA	63	110	53	6	241	473
BARE HILL	256	340	282	2	828	1708
CAMP GABRIELS	36	89	46	1	153	325
CHATEAUGAY ASACTC	28	61	44	0	104	237
CLINTON	404	581	313	65	1498	2861
FRANKLIN	273	333	205	18	862	1711
LYON MOUNTAIN	14	37	28	2	78	159
UPSTATE	163	333	166	21	510	1193
HUB SUBTOTAL	1321	2040	1207	120	4547	9235
	16.3%	22.1%	13.1%	1.3%	49.2%	100.0%
SULLIVAN HUB						
EASTERN	102	192	117	4	769	1184
MID-ORANGE	58	97	67	5	491	713
OTISVILLE	43	82	68	3	385	581
SHAMANGUNK	37	69	73	5	371	585
SULLIVAN	135	108	91	16	446	796
ULSTER	89	153	97	14	252	607
WALKKILL	25	77	48	2	414	546
WOODBOURNE	85	86	111	3	506	791
HUB SUBTOTAL	574	864	472	54	3634	5798
	9.9%	14.9%	11.6%	.9%	62.7%	100.0%
GREEN HAVEN HUB						
BEACON FEMALE	25	51	30	8	72	186
BEDFORD HILLS	114	187	122	18	373	814
DOWNSTATE	236	291	152	104	374	1137
FISHKILL	214	310	174	17	1005	1720
GREEN HAVEN	280	376	300	38	1156	2120
TACONIC	59	93	56	5	128	341
HUB SUBTOTAL	898	1308	814	190	3108	6318
	14.2%	20.7%	12.9%	3.0%	49.2%	100.0%
GREAT MEADOW HUB						
CAMP MCGREGOR	42	70	40	3	133	280
COXSACKIE	137	264	149	15	451	1016
GREAT MEADOW	215	370	249	31	789	1654
GREENE	289	534	282	8	572	1685
HUDSON	51	84	66	3	254	458
HUDSON WORK REL	4	20	9	1	69	103
MORIAN SHOCK	31	88	98	2	15	234
MT MCGREGOR	52	101	54	0	327	534
WASHINGTON	173	309	149	6	418	1055
HUB SUBTOTAL	994	1840	1096	69	3028	7027
	14.1%	26.2%	15.6%	1.0%	43.1%	100.0%
WENDE HUB						
ALBION FEMALE	170	342	151	26	345	1034
ALBION WORK RELEASE	2	12	5	0	46	65
ATTICA	271	474	352	44	1049	2190
BUFFALO WORK RELEASE	7	34	25	1	125	192
COLLINS	139	250	173	21	629	1212
COMANDA	239	335	272	7	898	1751
CROVELAND	121	221	155	11	722	1230
LAKEVIEW SHOCK	106	215	126	5	58	510
LAKEVIEW RECEP	51	75	39	6	13	184
LAKEVIEW SHOCK FEM	10	34	24	8	23	101
LAKEVIEW FEM TRANS	1	3	2	0	0	6
LAKEVIEW ASAT	39	71	66	0	24	200
LAKEVIEW SHU200	25	55	18	1	65	164
LIVINGSTON	78	199	134	8	429	848
ORLEANS	148	286	164	14	575	1187
ROCHESTER	4	13	8	0	56	81
WENDE	154	170	127	58	418	927
WYOMING	181	365	256	14	784	1600
WYOMING ASACTC	14	22	12	0	52	100
HUB SUBTOTAL	1760	3176	2111	224	6311	13582
	13.0%	23.4%	15.5%	1.6%	46.5%	100.0%
ELMIRA HUB						
AUBURN	191	350	259	22	929	1751
BUTLER FEEDER	1	9	14	2	27	53
BUTLER ASACTC	24	47	28	0	65	166
BUTLER MIN MALE	23	69	46	0	147	285
CAYUGA	108	194	161	8	594	1025
ELMIRA	251	415	272	40	828	1786
FIVE POINTS	179	302	189	9	647	1326
FIVE POINTS ICP	4	2	2	1	10	19
FIVE POINTS STP	4	5	4	3	7	23
MONTREY SHOCK	27	109	91	1	13	241
SOUTHPORT	120	229	136	19	352	856
HUB SUBTOTAL	914	1731	1202	105	3579	7531
	12.1%	23.0%	16.0%	1.4%	47.5%	100.0%
NEW YORK CITY HUB						
ARTHURKILL	158	187	104	14	482	945
BAYVIEW	19	43	20	5	67	154
BAYVIEW WORK RELEASE	32	69	24	2	68	195
EDGECOMBE	60	74	40	2	158	336
FULTON	38	67	22	1	97	225
LINCOLN	27	67	22	2	160	278
QUEENSBORO GENERAL	66	104	52	2	193	417
SING SING	267	365	182	26	893	1733
HUB SUBTOTAL	667	978	466	54	2118	4283
	15.4%	22.8%	10.9%	1.3%	49.5%	100.0%
GRAND TOTAL	8779	14683	9124	928	31452	64964
	13.5%	22.6%	14.0%	1.4%	48.4%	100.0%

TABLE 17A. ENGLISH READING LEVEL BY HUB AND FACILITY
(ENGLISH LANGUAGE TEST)
UNDERCUSTODY POPULATION JANUARY 10, 2004

HUB AND FACILITY	ENGLISH READING LEVEL AND HIGH SCHOOL DIPLOMA STATUS					TOTAL
	0 - 4TH GRADE	5TH - 8TH	9TH - 12	MISSING TEST DATA	VERIFIED HS DIPLOMA OR DEGREE	
ONEIDA HUB						
CAMP GEORGETOWN	15	58	42	0	120	235
CAMP PHARSALIA	31	69	51	2	89	242
HALE CREEK ASACTC	37	105	45	1	201	339
MARCY	151	254	180	7	563	1155
MID-STATE	194	305	192	10	751	1452
MOHAWK	178	280	178	32	520	1188
ONEIDA	61	222	140	12	692	1127
SUNNIT SHOCK-H	15	44	26	1	23	109
SUNNIT GENERAL	3	20	12	0	23	58
HUB SUBTOTAL	685	1357	866	65	2982	5955
	11.5%	22.8%	14.5%	1.1%	50.1%	100.0%
WATERTOWN HUB						
CAPE VINCENT	92	241	130	9	494	966
GOVERNEUR	99	242	133	4	440	918
ODDENSBURG	63	138	73	5	224	503
RIVERVIEW	98	264	132	4	474	972
WATERTOWN	77	180	65	14	290	626
HUB SUBTOTAL	429	1068	533	36	1922	3985
	10.8%	26.7%	13.4%	.9%	48.2%	100.0%
CLINTON HUB						
ADIRONDACK	59	122	62	4	268	515
ALTONA	44	98	52	3	224	421
BARE HILL	205	284	263	2	783	1537
CAMP GABRIELS	29	85	46	1	150	311
CHATEAUGAY ASACTC	25	58	38	0	104	225
CLINTON	338	538	296	64	1445	2681
FRANKLIN	205	304	186	16	813	1524
LYON MOUNTAIN	12	35	26	2	76	151
UPSTATE	130	314	162	20	493	1121
HUB SUBTOTAL	1047	1840	1131	112	4356	8486
	12.3%	21.7%	13.3%	1.3%	51.3%	100.0%
SULLIVAN HUB						
EASTERN	76	160	109	4	708	1057
MID-ORANGE	43	84	57	3	450	501
OTISVILLE	29	72	56	3	341	367
SHAMANSUNK	30	63	65	4	350	512
SULLIVAN	122	103	89	16	423	753
ULSTER	74	137	81	15	247	554
WALLKILL	22	71	46	2	394	535
WOODBOURNE	66	72	90	2	457	687
HUB SUBTOTAL	462	762	593	49	3370	5236
	8.8%	14.6%	11.3%	.9%	64.4%	100.0%
GREEN HAVEN HUB						
BEACON FEMALE	24	50	30	8	70	182
BEDFORD HILLS	100	187	121	17	362	787
DOWNSTATE	202	266	127	99	364	1058
FISHKILL	165	266	155	15	324	1523
GREEN HAVEN	191	334	267	37	1076	1905
TACONIC	50	90	54	5	127	326
HUB SUBTOTAL	732	1193	754	181	2923	5783
	12.7%	20.6%	13.0%	3.1%	50.5%	100.0%
GREAT MEADOW HUB						
CAMP MCGREGOR	38	69	39	3	131	280
COXSACKIE	114	234	139	15	432	934
GREAT MEADOW	188	350	240	30	761	1569
GREENE	227	486	267	7	555	1942
HUDSON	47	83	63	3	249	445
HUDSON WORK REL	3	18	9	1	48	99
MORIAN SHOCK	28	84	97	1	15	225
MT MCGREGOR	38	90	49	0	303	480
WASHINGTON	148	299	143	5	406	1501
HUB SUBTOTAL	831	1713	1046	65	2920	5575
	12.6%	26.1%	15.9%	1.0%	44.4%	100.0%
WENDE HUB						
ALBION FEMALE	187	316	144	25	339	981
ALBION WORK RELEASE	1	12	5	0	46	64
ATTICA	221	448	341	44	1008	2062
BUFFALO WORK RELEASE	6	33	24	1	124	188
COLLINS	101	223	163	20	605	1112
DOMANDA	170	304	251	11	703	1605
GROVELAND	98	206	149	4	55	1164
LAKEVIEW SHOCK	70	174	106	4	409	649
LAKEVIEW RECEP	37	71	34	5	13	160
LAKEVIEW SHOCK FEM	9	30	26	8	22	95
LAKEVIEW FEM TRANS	0	8	2	0	0	5
LAKEVIEW ASAT	23	66	61	0	23	173
LAKEVIEW SHU200	22	51	17	1	63	154
LIVINGSTON	59	187	125	6	423	800
ORLEANS	106	254	153	13	554	1080
ROCHESTER	4	13	8	0	56	81
WENDE	137	159	126	56	404	882
WYOMING	131	329	242	13	786	1471
WYOMING ASACTC	9	16	8	0	50	85
HUB SUBTOTAL	1358	2895	1985	214	6117	12569
	10.8%	23.0%	15.8%	1.7%	48.7%	100.0%
ELMIRA HUB						
AUBURN	161	324	253	21	892	1633
BUTLER FEEDER	1	7	12	2	26	48
BUTLER ASACTC	20	43	27	0	64	154
BUTLER MIN MALE	20	62	44	0	144	270
CAYUGA	82	171	156	7	541	957
ELMIRA	204	394	269	39	800	1708
FIVE POINTS	144	287	176	8	632	1247
FIVE POINTS ICP	4	2	2	1	10	19
FIVE POINTS STP	3	5	4	1	7	22
HONTEREY SHOCK	23	105	90	1	15	232
SOUTHPORT	769	1624	1166	19	335	814
HUB SUBTOTAL	107	220	133	19	3464	7124
	10.8%	22.8%	16.4%	1.4%	48.6%	100.0%
NEW YORK CITY HUB						
ARTHURKILL	124	170	91	14	445	844
BAYVIEW	18	45	20	5	66	152
BAYVIEW WORK RELEASE	31	66	23	2	67	189
EDGECOMBE	39	66	36	2	147	290
FULTON	21	52	17	0	88	178
LINCOLN	18	60	20	2	154	284
QUEENSBORO GENERAL	51	91	50	2	106	377
SING SING	226	339	167	24	806	1562
HUB SUBTOTAL	528	887	424	51	1956	3846
	13.7%	23.1%	11.0%	1.3%	50.9%	100.0%
GRAND TOTAL	6841	13336	8498	874	30010	59559
	11.5%	22.4%	14.3%	1.5%	50.4%	100.0%

ONLY VERIFIED DATA ON EDUCATION REPORTED

TABLE 17B. SPANISH READING LEVEL BY HUB AND FACILITY
(SPANISH LANGUAGE TEST)
UNDERCUSTODY POPULATION JANUARY 10, 2004

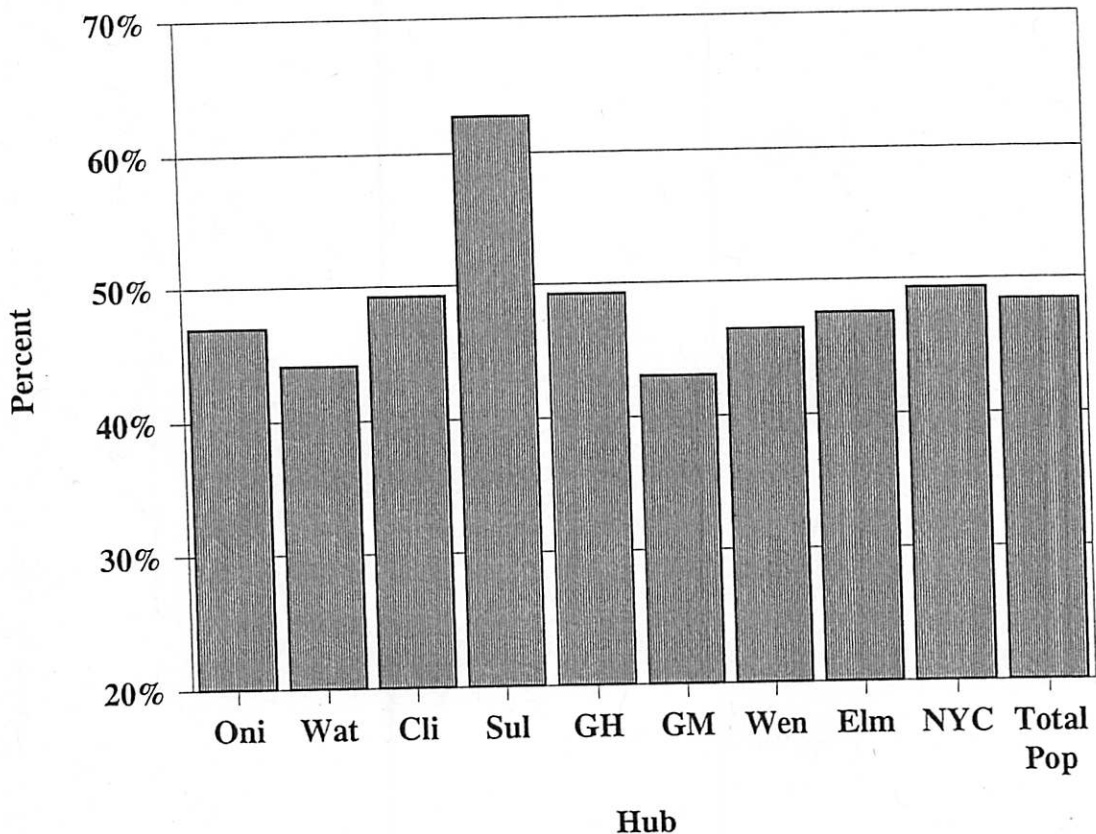
HUB AND FACILITY	SPANISH READING LEVEL AND HIGH SCHOOL DIPLOMA STATUS					TOTAL
	0 - 4TH GRADE	5TH - 8TH	9TH - 12	MISSING TEST DATA	VERIFIED HS DIPLOMA OR DEGREE	
ONEIDA HUB						
CAMP GEORGETOWN	4	4	1	0	4	13
CAMP PHARSALIA	5	2	4	1	0	12
HALE CREEK ASACTC	11	9	1	1	6	28
HARCY	72	48	32	0	35	187
MID-STATE	59	32	26	1	31	149
MOHAWK	95	51	29	2	33	210
ONEIDA	18	14	4	0	21	57
SUMMIT SHOCK-H	1	2	0	0	1	4
SUMMIT GENERAL	3	2	1	5	0	6
HUB SUBTOTAL	288	164	98	5	131	666
	40.2%	24.6%	14.7%	.8%	19.7%	100.0%
WATERTOWN HUB						
CAPE VINCENT	65	36	15	1	30	147
GOUVERNEUR	43	33	15	1	21	113
ODGENSBURG	43	31	10	1	10	95
RIVERVIEW	70	37	11	0	20	138
WATERTOWN	48	23	8	3	11	93
HUB SUBTOTAL	269	160	59	6	92	586
	45.9%	27.3%	10.1%	1.0%	15.7%	100.0%
CLINTON HUB						
ADIRONDACK	25	14	8	1	5	53
ALTONA	19	12	1	3	17	52
BARE HILL	51	56	19	0	45	171
CAMP GABRIELS	7	4	0	0	3	14
CHATEAUGAY ASACTC	3	3	6	0	0	12
CLINTON	66	43	17	1	53	180
FRANKLIN	68	49	19	2	49	187
LYON MOUNTAIN	2	2	2	0	2	8
UPSTATE	35	17	4	1	191	72
HUB SUBTOTAL	274	200	76	8	191	749
	36.6%	26.7%	10.1%	1.1%	25.5%	100.0%
SULLIVAN HUB						
EASTERN	26	32	8	0	61	127
MID-ORANGE	15	13	10	2	41	81
OTISVILLE	18	10	12	0	44	80
SHAWANGUNK	7	6	8	1	21	43
SULLIVAN	13	5	2	0	23	43
ULLSTER	15	16	16	1	5	53
WALLKILL	3	6	2	0	20	31
WOODBOURNE	19	14	21	1	49	104
HUB SUBTOTAL	112	102	79	5	264	562
	19.9%	18.1%	14.1%	.9%	47.0%	100.0%
GREEN HAVEN HUB						
BEACON FEMALE	1	1	0	0	2	4
BEDFORD HILLS	14	0	1	1	11	27
DOWNSTATE	34	25	5	5	10	79
FISHKILL	49	44	19	2	81	195
GREEN HAVEN	59	42	33	1	80	215
TACONIC	9	3	2	0	1	15
HUB SUBTOTAL	166	115	60	9	185	535
	31.0%	21.8%	11.2%	1.7%	34.6%	100.0%
GREAT MEADOW HUB						
CAMP MCGREGOR	4	1	1	0	2	8
COXSACKIE	23	30	10	0	19	82
GREAT MEADOW	27	20	9	1	28	85
GREENE	62	48	15	1	17	143
HUDSON	4	1	3	0	5	13
HUDSON WORK REL	1	2	0	0	1	4
MORIAH SHOCK	3	4	1	1	0	9
MT MCGREGOR	14	11	5	0	24	54
WASHINGTON	25	10	6	1	12	54
HUB SUBTOTAL	163	127	50	4	108	452
	36.1%	28.1%	11.1%	.9%	23.9%	100.0%
WENDE HUB						
ALBION FEMALE	13	26	7	1	6	53
ALBION WORK RELEASE	1	0	0	0	0	1
ATTICA	50	26	11	0	41	128
BUFFALO WORK RELEASE	1	1	1	0	1	4
COLLINS	38	27	10	1	24	100
GOWANDA	69	31	21	0	25	146
GROVELAND	26	15	6	0	19	66
LAKEVIEW SHOCK	36	41	20	1	3	101
LAKEVIEW RECEP	14	4	5	1	0	24
LAKEVIEW SHOCK FEM	1	4	0	0	0	4
LAKEVIEW FEM TRANS	1	0	0	0	0	1
LAKEVIEW ASAT	16	5	5	0	1	27
LAKEVIEW SHU200	3	4	9	2	6	10
LIVINGSTON	19	12	11	1	21	48
ORLEANS	42	32	11	2	14	107
WENDE	17	11	1	2	14	45
WYOMING	50	36	14	1	28	129
WYOMING ASACTC	5	6	4	0	2	17
HUB SUBTOTAL	402	281	126	10	194	1013
	39.7%	27.7%	12.4%	1.0%	19.2%	100.0%
ELMIRA HUB						
AUBURN	30	24	6	1	37	98
BUTLER FEEDER	0	2	2	0	1	5
BUTLER ASACTC	6	4	1	0	1	12
BUTLER MIN MALE	3	7	2	0	3	15
CAYUGA	26	23	5	1	13	68
ELMIRA	27	19	3	1	28	78
FIVE POINTS	35	15	13	1	15	79
FIVE POINTS STP	1	0	0	0	0	1
MONTEREY SHOCK	4	6	3	0	0	9
SOUTHPORT	13	9	3	0	17	42
HUB SUBTOTAL	145	107	36	4	115	407
	35.6%	26.3%	8.8%	1.0%	28.3%	100.0%
NEW YORK CITY HUB						
ARTHURKILL	34	17	13	0	37	101
BAYVIEW	1	0	0	0	1	2
BAYVIEW WORK RELEASE	1	3	1	0	1	6
EDGECOMBE	21	10	4	0	11	46
FULTON	17	15	5	1	9	47
LINCOLN	9	7	2	0	6	26
QUEENSBORO GENERAL	15	13	2	2	10	40
SING SING	41	26	15	0	87	171
HUB SUBTOTAL	139	91	42	3	162	437
	31.8%	20.8%	9.6%	.7%	37.1%	100.0%
GRAND TOTAL	1958	1347	626	54	1462	5407
	35.8%	24.9%	11.6%	1.0%	26.7%	100.0%

Academic Degree Status

Table 18 presents data on the educational attainment of persons under custody on January 10, 2004. The data reveal that only 31,417 (48.4%) inmates had at least a high school diploma or General Education Diploma out of 64,966 under custody inmates. The Department only recognizes academic degrees that can be verified from an outside source or which are awarded while the inmate is in custody.

A comparison of the Hubs by percent of inmates with a GED, high school diploma or higher degree shows that the Sullivan Hub had the highest percent at 62.7% while the Great Meadow Hub had the lowest percent at 43.0%.

Figure 18
High School Diploma or Above



English Language Proficiency

The vast majority (90.3%) of inmates under custody are English language dominant (see Table 19). There were also 5,371 inmates who were Spanish language dominant (8.2%, which includes Spanish dominant only, Spanish and limited English, and Spanish and moderate English). Spanish dominant inmates were present in significant numbers in several Hubs (also see Figure 19). For instance, the Wende Hub in the western part of the state had 974 Spanish language dominant inmates; the Clinton Hub had 757 Spanish language dominant inmates and the Oneida Hub had 659 Spanish language dominant inmates. Spanish dominant inmates may require special programming and present special security problems because of their limited English comprehension.

Figure 19
Spanish Language Dominant

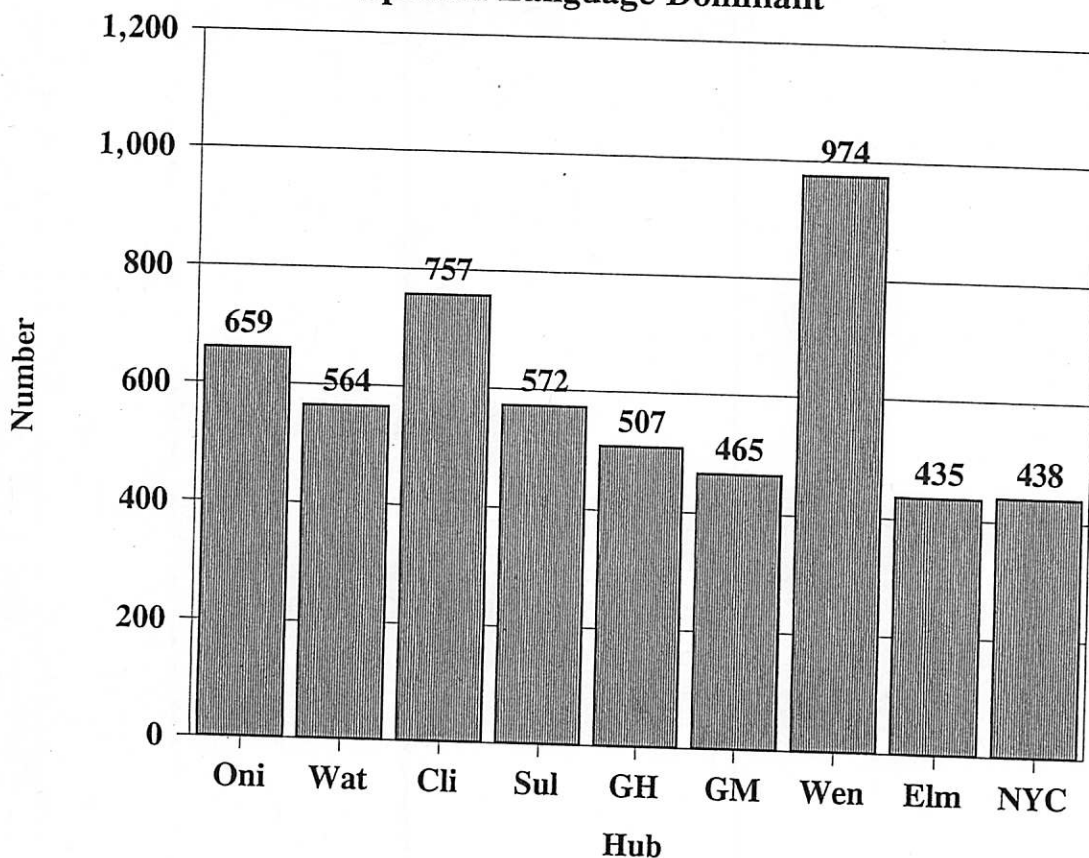


TABLE 19. DOMINANT LANGUAGE BY HUB AND FACILITY: UNDERCUSTODY POPULATION JANUARY 1, 2004

HUB AND FACILITY	SPANISH ONLY	SPANISH & LIMITED ENGLISH	SPANISH & MODERATE ENGLISH	FLUENT ENGLISH	OTHER LANGUAGE	NO PREFERENCE	TOTAL
ONEIDA HUB							
CAMP GEORGETOWN	14	2	3	235	0	0	254
CAMP PHARSALIA	9	0	2	245	0	0	254
HALE CREEK ASACTC	22	1	4	407	0	3	437
HARCY	132	20	31	1134	1	12	1330
MID-STATE	100	22	27	1442	9	12	1612
MOHAWK	144	26	28	1109	4	13	1404
ONEIDA	36	13	13	1117	0	6	1185
SUNMIT SHOCK-M	2	2	0	100	0	0	113
SUNMIT GENERAL	5	0	1	62	14	0	68
HUB SUBTOTAL	464 7.0%	86 1.3%	109 1.6%	5939 89.2%	14 .2%	49 .7%	6661 100.0%
WATERTOWN HUB							
CAPE VINCENT	115	11	17	961	4	7	1115
GOUVERNEUR	89	5	16	907	5	11	1033
OGDENSBURG	69	16	8	509	0	4	606
RIVERVIEW	113	8	14	972	4	5	1116
WATERTOWN	70	6	7	598	3	6	690
HUB SUBTOTAL	456 10.0%	46 1.0%	62 1.4%	3967 86.6%	16 .4%	33 .7%	4560 100.0%
CLINTON HUB							
ADIRONDACK	29	13	11	497	2	12	544
ALTONA	31	8	10	417	1	5	475
BARE HILL	92	41	43	1501	13	29	1719
CAMP GABRIELS	13	1	3	304	0	3	324
CHATEAUGAY ASACTC	8	2	2	201	1	1	215
CLINTON	109	39	42	2595	23	35	2843
FRANKLIN	99	42	41	1480	14	34	1718
LYON MOUNTAIN	6	1	2	151	0	1	161
UPSTATE	39	14	16	1120	4	13	1206
HUB SUBTOTAL	426 4.6%	161 1.7%	170 1.8%	8274 89.7%	58 .6%	136 1.5%	9225 100.0%
SULLIVAN HUB							
EASTERN	69	27	27	1029	11	26	1159
MID-ORANGE	52	12	16	627	7	8	722
OTISVILLE	53	10	15	495	8	9	590
SHAWANGUNK	25	13	7	506	4	5	560
SULLIVAN	23	9	13	735	5	3	788
ULSTER	44	5	17	668	0	2	739
WALKKILL	18	5	8	537	3	9	580
WOODSBURNE	60	26	15	456	13	22	792
HUB SUBTOTAL	344 5.8%	110 1.8%	110 2.0%	5253 88.1%	51 .9%	84 1.4%	5960 100.0%
GREEN HAVEN HUB							
BEACON FEMALE	2	0	0	188	0	0	190
BEDFORD HILLS	21	1	2	801	2	0	827
DOWNSTATE	28	20	27	1092	5	12	1184
FISHKILL	114	26	45	1480	17	37	1727
GREEN HAVEN	120	54	34	1822	44	35	2109
TACONIC	12	1	0	328	0	0	341
HUB SUBTOTAL	297 4.7%	102 1.6%	108 1.7%	5719 89.7%	68 1.1%	84 1.3%	6378 100.0%
GREAT MEADOW HUB							
CAMP MCGREGOR	6	3	1	283	0	2	295
COXSACKIE	42	11	22	927	5	11	1018
GREAT MEADOW	52	16	26	1524	9	14	1641
GREENE	116	12	22	1521	6	6	1685
HUDSON	11	0	2	432	1	6	452
HUDSON WORK REL	3	0	2	101	0	0	106
MORIAM SHOCK	6	0	2	227	0	1	236
MT MCGREGOR	36	10	10	437	4	10	527
WASHINGTON	58	2	14	1005	5	8	1072
HUB SUBTOTAL	310 4.4%	54 .8%	101 1.4%	6477 92.1%	30 .4%	60 .9%	7032 100.0%
WENDE HUB							
ALBION FEMALE	33	1	0	993	0	0	1027
ALBION WORK RELEASE	0	0	0	60	0	0	60
ATTICA	71	23	31	2028	7	28	2188
BUFFALO WORK RELEASE	3	0	1	190	1	0	195
COLLINS	61	14	21	1083	7	13	1199
GOWANDA	100	21	25	1582	10	8	1746
GROVELAND	43	11	6	1158	4	7	1229
LAKEVIEW SHOCK	84	11	12	398	1	3	509
LAKEVIEW RECEP	16	2	3	149	0	0	170
LAKEVIEW SHOCK FEM	4	0	0	102	0	0	106
LAKEVIEW FEM TRANS	0	0	0	6	0	0	6
LAKEVIEW ASAT	17	3	2	175	0	1	198
LAKEVIEW SHU200	7	0	3	152	0	1	163
LIVINGSTON	32	6	5	813	2	3	861
ORLEANS	70	18	16	1042	3	7	1176
ROCHESTER	0	0	0	75	0	0	75
WENDE	28	8	15	852	1	6	910
WYOMING	96	14	21	1452	4	13	1600
WYOMING ASACTC	14	0	2	82	0	1	99
HUB SUBTOTAL	679 5.0%	132 1.0%	163 1.2%	12412 91.8%	40 .3%	91 .7%	13517 100.0%
ELMIRA HUB							
AUBURN	66	15	25	1468	11	12	1777
BUTLER FEEDER	4	0	0	53	0	0	57
BUTLER ASACTC	10	0	2	155	0	0	167
BUTLER MIN MALE	13	1	4	265	0	2	285
CAYUGA	47	7	11	932	0	7	1004
ELMIRA	57	9	19	1678	8	12	1783
FIVE POINTS	53	14	15	1295	3	7	1347
FIVE POINTS ICP	0	0	0	19	0	0	19
FIVE POINTS STP	1	0	0	21	0	0	22
MONTREY SHOCK	5	1	1	257	0	2	266
SOUTHPORT	31	8	14	805	5	12	877
HUB SUBTOTAL	287 3.8%	55 .7%	93 1.2%	7068 93.2%	27 .4%	54 .7%	7584 100.0%
NEW YORK CITY HUB							
ARTHURKILL	69	16	18	819	5	15	942
BAYVIEW	1	0	0	193	0	0	194
BAYVIEW WORK RELEASE	3	0	0	199	0	0	202
EDGECOMBE	32	8	7	305	2	5	359
FULTON	39	2	6	169	0	0	216
LINCOLN	15	3	5	242	0	1	266
QUEENSBORO GENERAL	26	40	9	354	0	5	405
SING SING	85	40	45	1527	14	23	1736
HUB SUBTOTAL	270 4.3%	78 1.8%	90 2.1%	3770 88.1%	23 .5%	49 1.1%	4280 100.0%
GRAND TOTAL	3533 5.4%	824 1.3%	1014 1.6%	58859 90.3%	327 .5%	640 1.0%	65197 100.0%

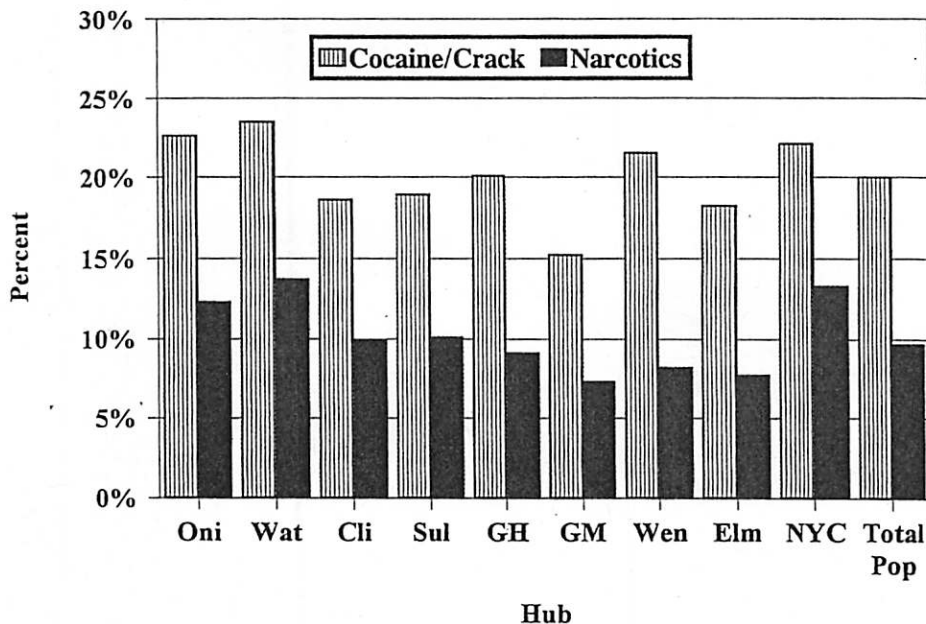
Substance Abuse

As part of the reception process, the Department of Correctional Services attempts to identify inmates who use drugs and have problems with alcohol. Drug use in the six months prior to incarceration is determined by inmate self-report. Alcohol problems are assessed by use of the Michigan Alcoholism Screening Test (MAST). In 2002, the Department supplemented these measures with the Simplified Screening Instrument (SSI). Scores of four or greater on the SSI indicate substance abuse. The specific type of substance is not identified by the SSI test. Since last year the Department is supplementing this information with data from the Inmate Payroll System (KIPY) and the Guidance System (KGNC).

Table 20 shows that seventy-three percent (73.4%) of inmates abuse drugs, alcohol, or both as measured by available data from tests and self-reporting. Note that the information in Table 20 is based on a severity ranking. Inmates who abuse drugs and alcohol are placed in the appropriate drug category, while those using multiple drugs are placed in the most severe category.

There was variation across the Hubs in the percentage of inmates who admitted drug use (see Figure 20). For example, in the Watertown Hub, twenty-four percent (23.5%) of inmates admitted use of crack/cocaine prior to incarceration compared to fifteen percent (15.2%) at the Great Meadow Hub. Fourteen percent (13.7%) of inmates admitted use of narcotics in the Watertown Hub prior to incarceration compared to seven percent (7.3%) at the Great Meadow Hub.⁶

Figure 20
Self-Reported Drug Use
Cocaine/Crack or Narcotics



⁶ For additional information on this topic see "Identified Substance Abusers - December 2003 (March 2004) New York State Department of Correctional Services, Albany, New York 12226.

Michigan Alcoholism Screening Test Score

Alcoholism is a serious problem in the under custody population. As noted in the prior section, the Michigan Alcoholism Screening Test (MAST) is administered to inmates during the reception/classification process to assess the extent of alcoholism. For purposes of this report "alcoholic" is defined as a score of 9 or higher on the MAST. A score of between 5 and 8 on the MAST is defined as "suggestive alcoholism". Of the 58,250 inmates for whom test results were available 26.0% (N=15,165) were defined as alcoholic and another 15.0% (N=8,747) were possibly alcoholic (see Table 20).

The Hubs varied in the percent alcoholic or possibly alcoholic; the Sullivan Hub had 32.5% alcoholic or possibly alcoholic and the Wende Hub had 49.0% alcoholic or possibly alcoholic (see Figure 21).

Figure 21
Alcoholic Inmates

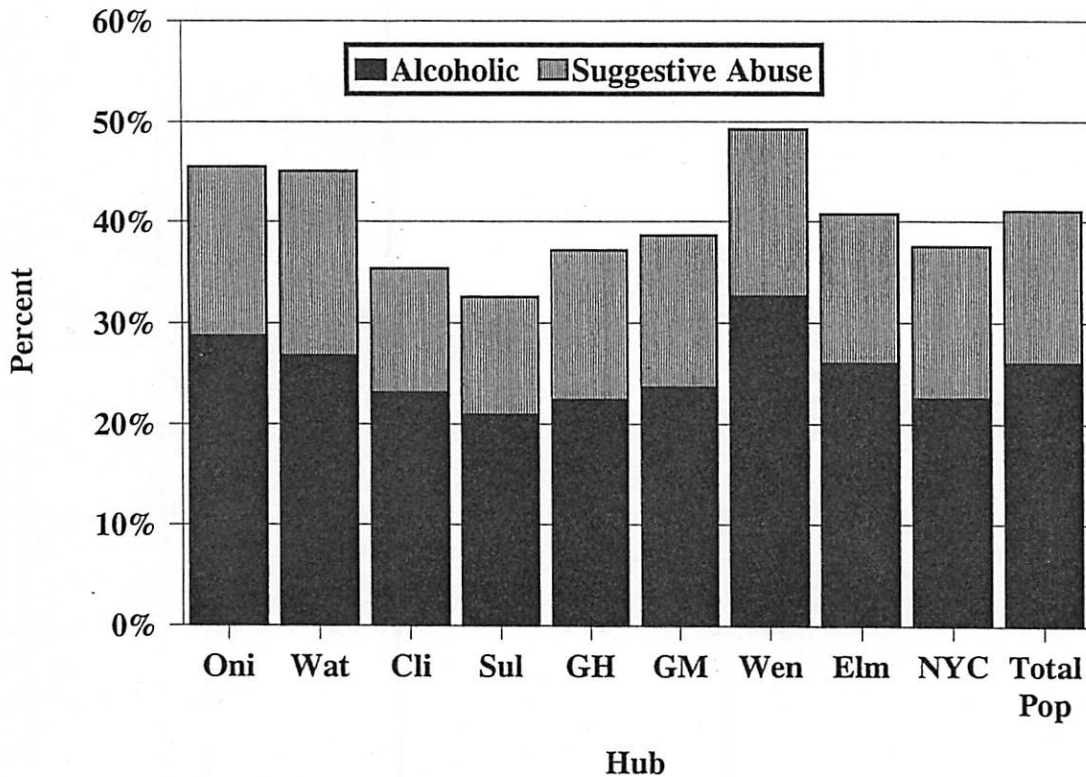
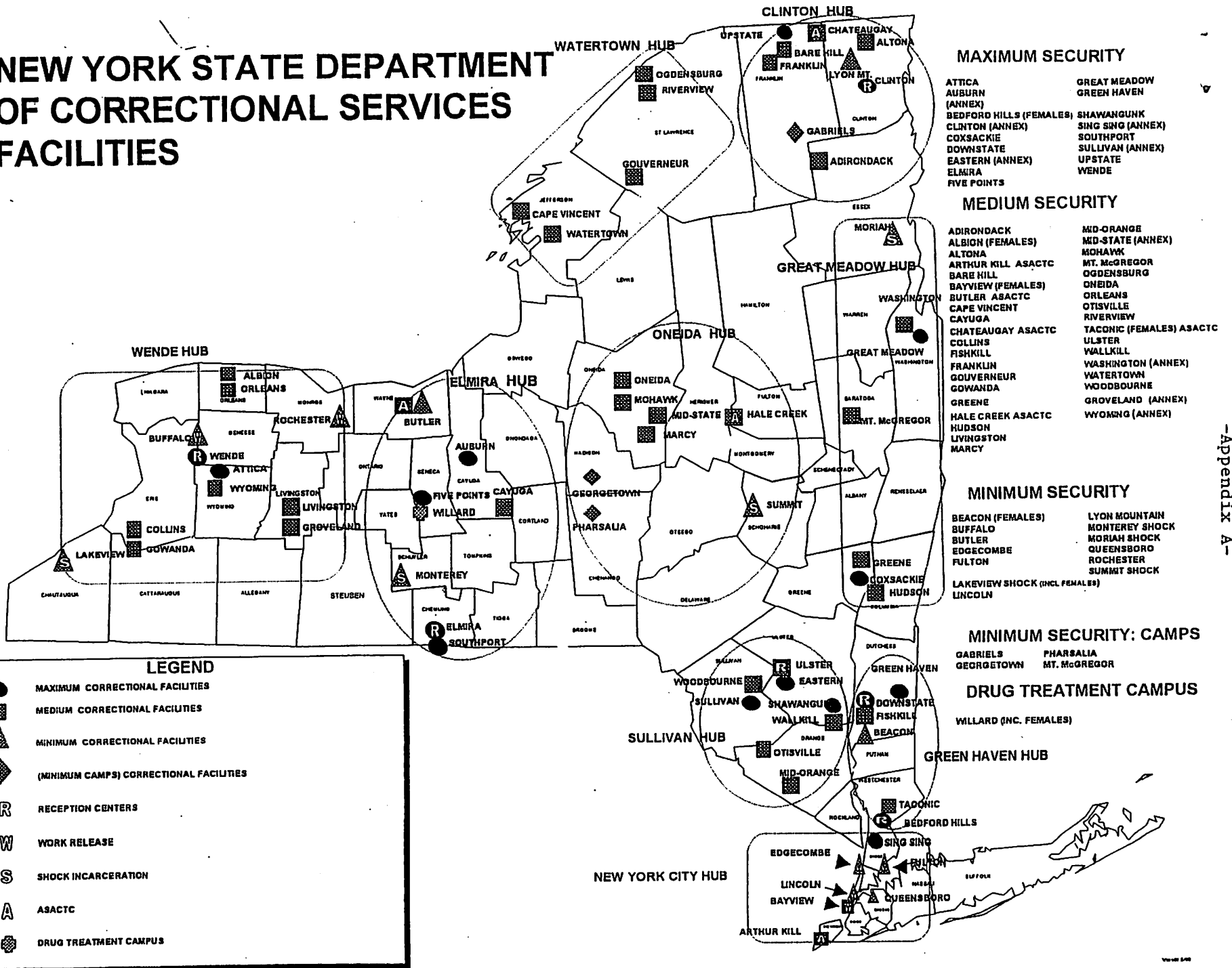


TABLE 21. INMATE ALCOHOLISM BY HUB AND FACILITY;
UNDERCUSTODY POPULATION JANUARY 1, 2004

HUB AND FACILITY	ALCOHOLISM OF INMATES			TOTAL
	NON ALCOHOLIC	SUGGESTIVE ABUSE	ALCOHOLIC	
ONEIDA HUB				
CAMP GEORGETOWN	143	49	59	251
CAMP PHARSALIA	118	59	70	247
HALE CREEK ASACTC	177	100	149	426
MARCY	658	199	360	1217
MID-STATE	824	192	453	1469
HOGAN	724	218	332	1274
ONEIDA	619	179	289	1087
SUMMIT SHOCK-M	58	22	32	112
SUMMIT GENERAL	29	18	19	66
HUB SUBTOTAL	3350	1034	1743	6149
	54.5x	16.8x	28.7x	100.0x
WATERTOWN HUB				
CAPE VINCENT	942	214	287	1043
GOVERNOUR	541	154	239	934
GOSENSBURG	298	118	143	579
RIVERVIEW	594	166	261	1025
WATERTOWN	352	118	187	657
HUB SUBTOTAL	2329	770	1137	4236
	55.0x	18.2x	26.8x	100.0x
CLINTON HUB				
ADIRONDACK	298	84	151	533
ALTONA	250	68	114	432
BARE HILL	1014	180	349	1543
CAMP GABRIELS	217	34	58	309
CHATEAUGAY ASACTC	117	55	59	211
CLINTON	1598	275	561	2434
FRANKLIN	1002	189	372	1563
LYON MOUNTAIN	89	20	45	154
UPSTATE	756	122	200	1078
HUB SUBTOTAL	5341	1007	1909	8257
	64.7x	12.2x	23.1x	100.0x
SULLIVAN HUB				
EASTERN	710	87	218	1015
MID-ORANGE	309	59	122	570
OTISVILLE	310	58	85	453
SHAWANGUNK	353	50	61	464
SULLIVAN	440	71	128	639
ULSTER	359	131	170	660
WALLKILL	368	55	102	523
WOODBOURNE	429	66	156	651
HUB SUBTOTAL	3358	575	1042	4975
	67.5x	11.6x	20.9x	100.0x
GREEN HAVEN HUB				
BEACON FEMALE	69	52	49	170
BEDFORD HILLS	259	234	209	702
DOWNSTATE	604	101	188	893
FISHKILL	984	161	327	1472
GREEN HAVEN	1349	145	305	1799
TACONIC	97	95	120	312
HUB SUBTOTAL	3362	788	1198	5348
	62.9x	14.7x	22.4x	100.0x
GREAT MEADOW HUB				
CAMP MCGREGOR	147	62	78	287
COXSACKIE	642	114	177	933
GREAT MEADOW	960	146	280	1386
GREENE	907	311	399	1617
HUDSON	253	60	121	414
HUDSON WORK REL	54	10	59	103
MORIAH SHOCK	117	44	72	233
MT MCGREGOR	285	57	139	481
WASHINGTON	625	170	223	1018
HUB SUBTOTAL	3970	974	1528	6472
	61.3x	15.0x	23.6x	100.0x
WENDE HUB				
ALBION FEMALE	297	295	362	952
ALBION WORK REL	16	14	25	55
ATTICA	1220	238	402	1860
BUFFALO WORK REL	57	29	97	183
COLLINS	555	171	328	1054
GOWANDA	702	216	739	1657
GROVELAND	527	185	384	1096
LAKEVIEW SHOCK	281	94	127	502
LAKEVIEW RECEP	85	29	49	163
LAKEVIEW SHOCK FEM	41	28	34	103
LAKEVIEW FEM TRANS	3	1	2	6
LAKEVIEW ASAT	109	36	50	195
LAKEVIEW SHU200	97	23	27	147
LIVINGSTON	370	146	301	817
ORLEANS	586	170	318	1074
ROCHESTER	21	15	38	74
WENDE	423	102	210	735
WYOMING	795	229	439	1463
WYOMING ASACTC	48	7	42	97
HUB SUBTOTAL	6233	2026	3974	12233
	51.0x	16.6x	32.5x	100.0x
ELMIRA HUB				
AUBURN	979	186	366	1531
BUTLER FEEDER	23	11	21	55
BUTLER ASACTC	50	54	61	165
BUTLER HIN HALE	123	53	97	273
CAYUGA	475	164	291	930
ELMIRA	904	222	411	1539
FIVE POINTS	747	168	307	1222
FIVE POINTS ICP	9	2	6	17
FIVE POINTS STP	11	0	6	17
MONTEREY SHOCK	147	48	49	244
SOUTHPORT	538	88	140	766
HUB SUBTOTAL	4008	994	1755	6759
	59.3x	14.7x	26.0x	100.0x
NEW YORK CITY HUB				
ARTHURKILL	509	98	199	806
BAYVIEW	49	44	50	143
BAYVIEW WORK REL	65	68	58	191
EDGECOMBE	193	54	97	344
FULTON	111	41	58	210
LINCOLN	143	43	69	255
QUEENSBORO GENERAL	224	63	79	366
SING SING	1093	164	249	1506
HUB SUBTOTAL	2387	575	859	3821
	62.5x	15.0x	22.5x	100.0x
GRAND TOTAL	34338	8747	15145	58250
	58.9x	15.0x	24.0x	100.0x

NEW YORK STATE DEPARTMENT OF CORRECTIONAL SERVICES FACILITIES





Prepared by:

Dan Berstein
Program Research Specialist II

Linda Davis
Principal Clerk
(graphic displays)

Division of Program Planning,
Research and Evaluation