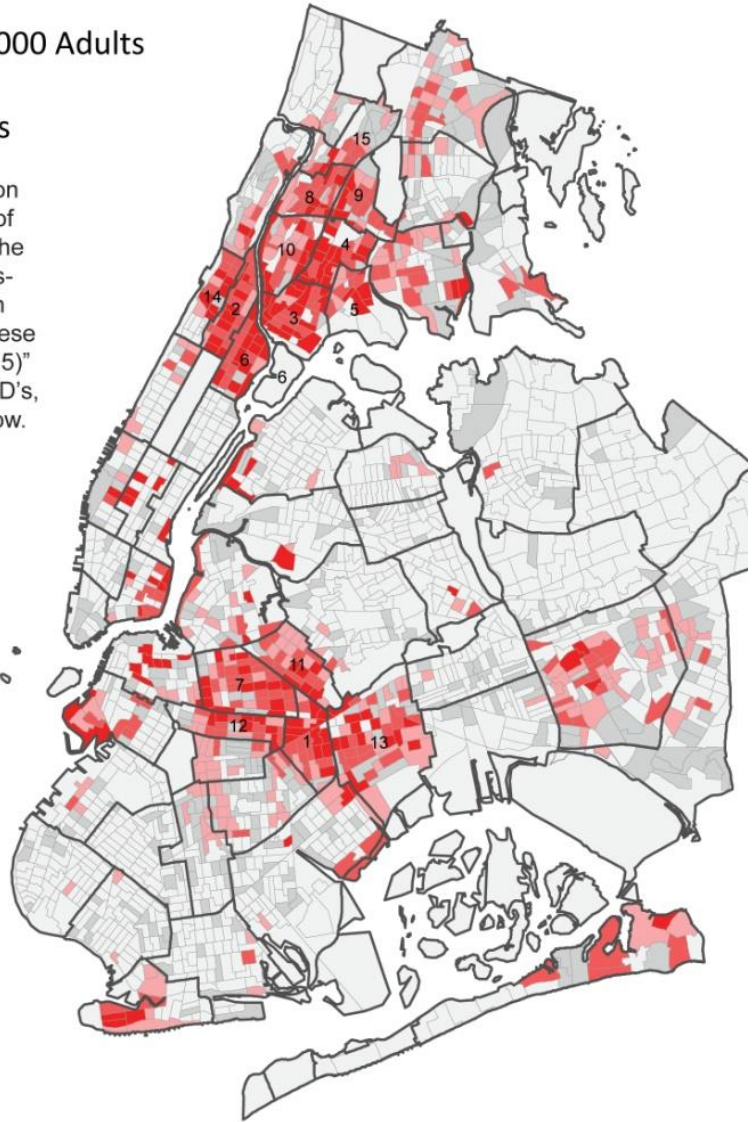
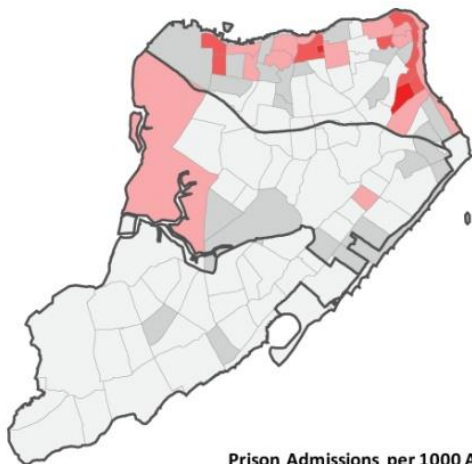
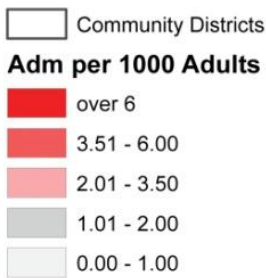


New York City (2009) People Admitted to Prison per 1000 Adults By Census Tract of Residence With Community District Borders

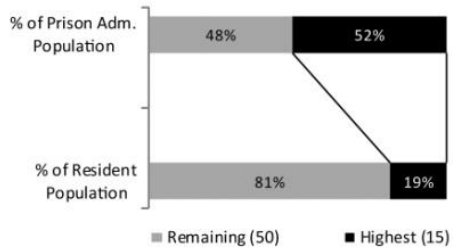
About half (52%) of the people sent to prison from New York City in 2009 came from 15 of the City's 65 Community Districts (CD's). The 15 CD's constitute the highest prison admission rate CD's in the City and are labeled in the map according to rank from 1 to 15. These 15 CD's are collectively labeled "Highest (15)" and compared to the City's remaining 50 CD's, labeled "Remaining (50)," in the charts below.



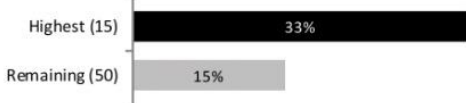
Prison Admissions per 1000 Adults



Imprisonment Disparity



Percent in Poverty



Percent Non-White or Hispanic



Data Source: Justice Mapping Center (JMC), Rutgers University | Analysis of NYS DOCCS data. DOCCS not responsible for JMC findings.