



# Bureau of Justice Statistics Bulletin

May 2006, NCJ 213133

## Prison and Jail Inmates at Midyear 2005

Paige M. Harrison  
and Allen J. Beck, Ph.D.  
*BJS Statisticians*

At midyear 2005 the Nation's prisons and jails incarcerated 2,186,230 persons. Prisoners in the custody of the 50 States and the Federal system accounted for two-thirds of the incarcerated population (1,438,701 inmates). The other third were held in local jails (747,529), not including persons in community-based programs.<sup>1</sup>

On June 30, 2005, 1,512,823 prisoners were under Federal and State jurisdiction, which includes inmates in custody and persons under the legal authority of a prison system but held outside its facilities. During the 12-month period ending June 30, 2005, the number under State jurisdiction rose 1.2%, while the number under Federal jurisdiction rose 2.9%. Montana (up 7.9%), South Dakota (up 7.8%), Minnesota (up 6.7%), and Kentucky (up 6.4%) had the largest percentage increases. Twelve States had decreases, including Vermont (-2.9%), Idaho (-2.8%), and New York (-2.5%).

At midyear 2005 local jail authorities held or supervised 819,434 offenders. Nine percent of these offenders (71,905) were supervised outside jail facilities in programs such as community service, work release, weekend reporting, electronic monitoring, and other alternative programs.

<sup>1</sup>See box on page 7 for description of jail populations.

### Highlights

#### Nation's prison population rose 1.6%; jail population, 4.7%

Prison population	Number of inmates	Jail population	Number of jail inmates	Total incarceration rate	Rate per 100,000 residents*
5 highest:					
Federal	184,484	California	82,138	Louisiana	1,138
Texas	171,338	Texas	66,534	Georgia	1,021
California	166,532	Florida	63,620	Texas	976
Florida	87,545	Georgia	44,965	Mississippi	955
New York	62,963	Pennsylvania	34,455	Oklahoma	919
5 lowest:					
North Dakota	1,338	North Dakota	944	Maine	273
Vermont	1,975	South Dakota	1,432	Minnesota	300
Wyoming	2,026	Maine	1,545	Rhode Island	313
Maine	2,084	Wyoming	1,551	Vermont	317
New Hampshire	2,561	New Hampshire	1,728	New Hampshire	319

\*Prison and jail inmates per 100,000 residents.

From midyear 2004 to midyear 2005 —

- The number of inmates in custody in local jails rose by 33,539; in State prison by 15,858; and in Federal prison by 6,584.
- The smaller State prison systems had the greatest percentage increase: Montana (up 7.9%) and South Dakota (up 7.8%).

On June 30, 2005 —

- A total of 2,266 State prisoners were under age 18. Adult jails held a total of 6,759 persons under age 18.
- State and Federal correctional authorities held 91,117 noncitizens (6.4% of all prisoners), down from 91,815 at midyear 2004.
- There were 129 female prison and jail inmates per 100,000 women in the United States, compared to 1,366 male prison and jail inmates per 100,000 men.

- An estimated 12% of black males, 3.7% of Hispanic males, and 1.7% of white males in their late twenties were in prison or jail.

- In three States — Iowa, South Dakota, and Wisconsin — black prison and jail inmates represented 4% of the black State population. Pennsylvania (with 1,714 Hispanic inmates per 100,000 Hispanic residents) and Idaho (1,654) had the highest Hispanic incarceration rates.

- Local jails were operating 5% below their rated capacity. In contrast, at yearend 2004 State prison systems were between 1% below capacity and 15% above; the Federal prison system was operating at 40% above rated capacity.

- Privately operated prison facilities held 101,228 inmates (up 2.7% since midyear 2004). The Federal system reported the largest increase among inmates in private prisons (up 2,038).

## Incarceration rate for Nation reaches 738 per 100,000 residents

On June 30, 2005, 1,431,468 inmates were in the custody of State and Federal prison authorities, and 747,529 inmates were in the custody of local jail authorities. In the first 6 months of 2005, the Nation's prison population increased 16,622 (1.2%). These data were collected in the 2005 National Prisoner Statistics program and the 2005 Census of Jail Inmates. (See *Methodology*, page 11, for a description of data collections.)

Since midyear 2004 the total incarcerated population has increased 2.6% (table 1). Including inmates in

privately operated facilities, the number of inmates in State prisons increased 1.3%; in Federal prisons, 3.9%; and in local jails, 4.7%. At midyear 2005 Federal prisons (including all secure and non-secure public and private facilities) held 8.4% of all inmates, up from 5.6% in 1995.

In the decade between yearend 1995 and midyear 2005, the incarceration population grew an average of 3.4% annually. During this period the Federal and State prison populations and the local jail population grew at the average annual rates of 7.4%, 2.5%, and 3.9%, respectively.

In the 12 months before midyear 2005, the number of inmates in prison and jails rose an estimated 56,428 inmates, or 1,085 per week.

The rate of incarceration in prison and jail in 2005 was 738 inmates per 100,000 U.S. residents — up from 725 at midyear 2004. At midyear 2005, 1 in every 136 U.S. residents were in prison or jail.

## Federal system growth continues to outpace that of States

The rate of growth of the State prison population slowed between 1995 and 2001 and then began to rise. During this time the percentage change in the first 6 months of each year steadily decreased, reaching a low of 0.6% in 2001, and then rose to 1.0% in 2005 (table 2). The percentage change in the second 6 months of each year showed a similar trend, resulting in an actual decrease in State prison populations for the second half of 2000 and 2001.

Since 1995 the Federal system has grown at a much higher rate than the States, peaking at 6.0% growth in the first 6 months of 1999. In the first 6 months of 2005, the number of Federal inmates increased 2.3%, more than twice the rate of State growth.

Year	Growth rates in Federal prison population at 6-month intervals	
	January to June	July to December
2005	2.3%	...
2004	3.6	0.6%
2003	4.2	1.5
2002	3.0	1.1
2001	5.1	2.8
2000	5.4	2.0
1999	6.0	3.7
1998	5.3	3.5
1997	4.4	2.6
1996	3.5	1.8
1995	4.7	0.8

...Not available.

**Table 1. Number of persons held in State or Federal prisons or in local jails, 1995-2005**

Year	Total inmates in custody	Prisoners in custody		Inmates held in local jails	Total incarceration rate <sup>a</sup>
		Federal	State		
1995	1,585,586	89,538	989,004	507,044	601
2000 <sup>b</sup>	1,935,753	133,921	1,176,269	621,149	683
2001 <sup>b</sup>	1,961,247	143,337	1,180,155	631,240	685
2002 <sup>b</sup>	2,033,331	151,618	1,209,640	665,475	701
2003 <sup>b</sup>	2,081,580	161,673	1,222,135	691,301	712
2004 <sup>b</sup>					
June	2,129,802	169,370	1,239,656	713,990	725
December	...	170,535	1,244,311	...	...
2005 <sup>b</sup>					
June 30	2,186,230	175,954	1,255,514	747,529	738
Percent change, 6/30/04-6/30/05	2.6%	3.9%	1.3%	4.7%	
Annual average change, 12/31/95-6/30/05	3.4%	7.4%	2.5%	3.9%	

Note: Jail counts are for midyear (June 30) and exclude persons who were supervised outside of a jail facility. State and Federal prisoner counts for 1995-2003 are for December 31. ...Not available.

<sup>a</sup>Persons in custody per 100,000 residents in each reference year.

<sup>b</sup>Total counts include Federal inmates in non-secure privately operated facilities: 6,143 in 2000, 6,192 in 2001, 6,598 in 2002, 6,471 in 2003, 6,786 (June) and 7,065 (December) in 2004, and 7,233 in June, 2005.

**Percent change during 6-month periods in the number of prisoners under the jurisdiction of State correctional authorities, 1995-2005**

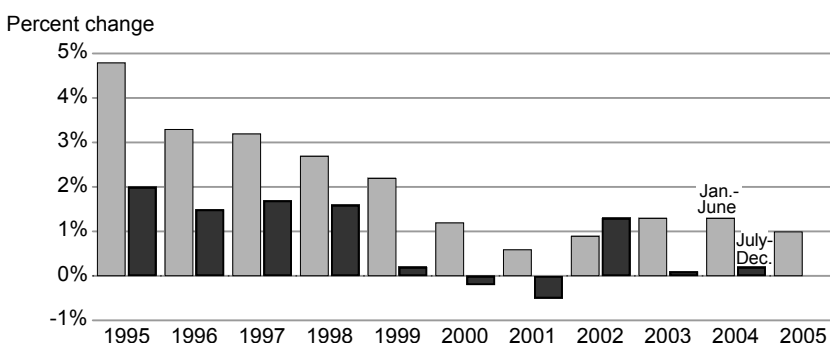


Figure 1

Some of the Federal growth since 1999 has been the result of the transfer of responsibility for housing sentenced felons from the District of Columbia (DC). The transfer to Federal facilities was completed by yearend 2001. Since then, the Federal system has continued to receive sentenced felons from DC Superior Court.

In absolute numbers the total increase of 20,989 State and Federal prison inmates between July 1, 2004, and June 30, 2005, was significantly lower than the growth during the previous 12-month period (27,637 inmates).

The percentage change from midyear 2004 to midyear 2005 (1.4%) was also smaller than the percentage change between 2003 and 2004 (1.9%). The average annual growth from 1995 to 2005 was 3.0%.

Years	Annual increase in the number of prisoners under State or Federal jurisdiction, July 1-June 30	
	Number	Percent
2004-05	20,989	1.4%
2003-04	27,637	1.9
2002-03	44,260	3.1
2001-02	20,587	1.5
2000-01	14,587	1.0
1999-00	30,710	2.3
1998-99	56,059	4.4
1997-98	57,726	4.7
1996-97	56,710	4.9
1995-96	57,507	5.2
Average growth, 1995-2005	38,677	3.0%

### Federal system accounts for over 25% of inmate population increase

Twenty-five percent of the Nation's prison population growth during the 12 months ending June 30, 2005, was accounted for by the 5,274 additional inmates under jurisdiction of the Federal system. During this 12-month period, several States also experienced substantial growth, including Montana (7.9%), South Dakota (7.8%), and Minnesota (6.7%). Twelve States experienced a decline in their prison population. Vermont had the largest percentage decrease (-2.9%), followed by Idaho (-2.8%) and New York (-2.5%).

**Table 2. Prisoners under the jurisdiction of State or Federal correctional authorities, June 30, 2004, to June 30, 2005**

Region and jurisdiction	Total			Percent change from—		Prison incarceration rate, 6/30/05 <sup>a</sup>
	06/30/05	12/31/04	06/30/04	6/30/04 to 6/30/05	12/31/04 to 6/30/05	
U.S. total	1,512,823	1,495,373	1,491,834	1.4%	1.2%	488
Federal	184,484	180,328	179,210	2.9	2.3	55
State	1,328,339	1,315,045	1,312,624	1.2	1.0	433
<b>Northeast</b>	173,125	170,980	173,967	-0.5%	1.3%	298
Connecticut <sup>b</sup>	19,744	19,497	20,018	-1.4	1.3	375
Maine	2,084	2,024	2,014	3.5	3.0	153
Massachusetts <sup>c</sup>	10,495	10,144	10,365	1.3	3.5	236
New Hampshire	2,561	2,448	2,441	4.9	4.6	196
New Jersey	28,124	26,757	28,107	0.1	5.1	323
New York	62,963	63,749	64,596	-2.5	-1.2	327
Pennsylvania	41,540	40,963	40,692	2.1	1.4	334
Rhode Island <sup>b</sup>	3,639	3,430	3,701	-1.7	6.1	179
Vermont <sup>d</sup>	1,975	1,968	2,033	-2.9	0.4	239
<b>Midwest</b>	252,406	250,702	249,732	1.1%	0.7%	380
Illinois	44,669	44,054	44,379	0.7	1.4	350
Indiana	24,244	24,008	23,760	2.0	1.0	386
Iowa	8,578	8,525	8,611	-0.4	0.6	289
Kansas	9,042	8,966	9,152	-1.2	0.8	329
Michigan	49,014	48,883	48,591	0.9	0.3	484
Minnesota	9,187	8,758	8,613	6.7	4.9	179
Missouri	31,066	31,188	30,542	1.7	-0.4	535
Nebraska	4,284	4,130	4,042	6.0	3.7	237
North Dakota	1,338	1,327	1,266	5.7	0.8	199
Ohio	44,976	44,798	44,770	0.5	0.4	392
South Dakota	3,344	3,095	3,101	7.8	8.0	430
Wisconsin	22,664	22,970	22,905	-1.1	-1.3	383
<b>South</b>	606,361	598,773	596,763	1.6%	1.3%	542
Alabama	27,740	25,873	26,521	4.6	7.2	587
Arkansas	13,469	13,655	13,477	-0.1	-1.4	480
Delaware <sup>b</sup>	7,180	6,927	6,973	3.0	3.7	478
Florida	87,545	85,533	84,733	3.3	2.4	492
Georgia <sup>d</sup>	47,682	50,979	48,625	-1.9	-6.5	526
Kentucky	18,897	17,790	17,763	6.4	6.2	432
Louisiana	37,254	36,939	36,745	1.4	0.9	824
Maryland	23,276	23,285	23,727	-1.9	0.0	405
Mississippi	20,856	20,983	20,429	2.1	-0.6	682
North Carolina	36,399	35,442	34,917	4.2	2.7	361
Oklahoma	23,702	23,319	23,284	1.8	1.6	655
South Carolina	23,896	23,428	24,173	-1.1	2.0	538
Tennessee	26,208	25,884	25,834	1.4	1.3	440
Texas	171,338	168,105	169,110	1.3	1.9	703
Virginia	35,667	35,564	35,472	0.5	0.3	471
West Virginia	5,252	5,067	4,980	5.5	3.7	287
<b>West</b>	296,447	294,590	292,162	1.5%	0.6%	421
Alaska <sup>b</sup>	4,630	4,554	4,515	2.5	1.7	374
Arizona <sup>d</sup>	32,664	32,515	31,631	3.3	0.5	502
California	166,532	166,221	166,053	0.3	0.2	456
Colorado	20,841	20,293	19,756	5.5	2.7	447
Hawaii <sup>b</sup>	6,071	5,960	5,946	2.1	1.9	334
Idaho	6,136	6,375	6,312	-2.8	-3.7	429
Montana	3,369	3,164	3,123	7.9	6.5	360
Nevada	11,565	11,365	10,971	5.4	1.8	478
New Mexico	6,595	6,379	6,352	3.8	3.4	327
Oregon	13,317	13,180	13,219	0.7	1.0	365
Utah	6,013	5,990	5,802	3.6	0.4	240
Washington	16,688	16,614	16,559	0.8	0.4	263
Wyoming	2,026	1,980	1,923	5.4	2.3	398

Note: The District of Columbia inmates sentenced to more than 1 year are the responsibility of the Federal Bureau of Prisons.

<sup>a</sup>The number of prisoners with a sentence of more than 1 year per 100,000 residents.

<sup>b</sup>Prisons and jails form one integrated system. Data include total inmate population.

<sup>c</sup>The incarceration rate includes an estimated 6,200 inmates sentenced to more than 1 year but held in local jails or houses of corrections.

<sup>d</sup>Population figures are based on custody counts.

**Table 3. Prisoners held in private facilities, June 30, 2004, and June 30, 2005**

Region and jurisdiction	Number of inmates		Percent of all inmates <sup>a</sup>
	6/30/05	06/30/04	6/30/05
U.S. Total	101,228	98,570	6.7%
Federal <sup>b</sup>	26,544	24,506	14.4
State	74,684	74,064	5.6
<b>Northeast</b>	3,214	3,328	1.9%
Connecticut	0	0	0
Maine	0	0	0
Massachusetts	0	0	0
New Hampshire	0	0	0
New Jersey <sup>c</sup>	2,437	2,566	8.7
New York	0	0	0
Pennsylvania	403	361	1.0
Rhode Island	0	0	0
Vermont <sup>c</sup>	374	401	18.9
<b>Midwest</b>	2,961	3,854	1.2%
Illinois	0	0	0
Indiana	88	655	0.4
Iowa	0	0	0
Kansas	0	0	0
Michigan	479	480	1.0
Minnesota	403	268	4.4
Missouri	0	0	0
Nebraska	0	0	0
North Dakota	57	47	4.3
Ohio	1,924	1,903	4.3
South Dakota	10	8	0.3
Wisconsin	0	493	0
<b>South</b>	48,266	47,899	8.0%
Alabama	257	153	0.9
Arkansas	0	0	0
Delaware	0	0	0
Florida	5,423	4,327	6.2
Georgia	4,625	4,597	9.7
Kentucky	1,907	1,679	10.1
Louisiana	2,924	2,923	7.8
Maryland	129	126	0.6
Mississippi	4,837	4,397	23.2
North Carolina	206	217	0.6
Oklahoma	5,812	5,868	24.5
South Carolina	15	17	0.1
Tennessee	5,142	5,121	19.6
Texas	15,414	16,906	9.0
Virginia	1,575	1,568	4.4
West Virginia	0	0	0
<b>West</b>	20,243	18,983	6.8%
Alaska	1,365	1,304	29.5
Arizona	5,291	4,371	16.2
California	2,470	2,797	1.5
Colorado	3,320	3,074	15.9
Hawaii	1,774	1,621	29.2
Idaho	1,283	1,269	20.9
Montana	747	646	22.2
Nevada	0	455	0
New Mexico	2,810	2,649	42.6
Oregon	0	0	0
Utah	0	0	0
Washington <sup>c</sup>	406	232	2.4
Wyoming	777	565	38.4

<sup>a</sup>Based on the total number of inmates under State or Federal jurisdiction.

<sup>b</sup>Includes Federal inmates held in privately operated community correctional centers: 7,233 on 6/30/05 and 6,786 on 6/30/04.

<sup>c</sup>Inmates held in out-of-State private facilities.

### Prison incarceration rates continue to rise

The incarceration rate of State and Federal prisoners sentenced to more than 1 year was 488 per 100,000 U.S. residents on June 30, 2005, up from 486 per 100,000 December 31, 2004. At midyear 2005, 10 States exceeded the national rate led by Louisiana with 824 sentenced prisoners per 100,000 State residents, Texas with 703, and Mississippi with 682. Nine States had rates that were less than half of the national rate including Maine (153), Minnesota and Rhode Island (both 179), and New Hampshire (196).

Overall, the State incarceration rate rose about 14% between yearend 1995 and midyear 2005, from 379 to 433 prisoners per 100,000 U.S. residents. At the same time the Federal incarceration rate rose 72%, from 32 to 55 prisoners per 100,000 U.S. residents.

Since yearend 1995 the total number of sentenced inmates per 100,000 residents has risen from 411 to 488. During this period prison incarceration rates rose most in the Midwest (from 310 to 380), followed by the West (from 358 to 421) and the South (from 483 to 542). The rate in the Northwest decreased slightly from 301 to 298.

Number of sentenced inmates per 100,000 U.S. residents on December 31

	State	Federal	Total*
1995	379	32	411
2000	426	42	469
2001	422	48	470
2002	427	49	476
2003	430	52	482
2004	432	54	486
2005, midyear	433	55	488

\*Totals may not add due to rounding.

### A quarter of inmates in private facilities held for Federal system

In the 12 months ending June 30, 2005, the number of prisoners held in privately operated facilities increased from 98,570 to 101,228, an increase of 2.7% (table 3). Overall, private facilities held 6.7% of all State and Federal inmates, up from 6.6% at midyear 2004. The Federal system (26,544), Texas (15,414), Oklahoma (5,812), and Florida (5,423) reported the largest number of inmates in private facilities at midyear 2005. Four States, all in the West, had at least a quarter of their prisoners in private facilities.

Number of inmates held in privately operated facilities, 12/31/00 to 06/30/05

	Total	State	Federal	Percent of all inmates
2000	90,542	75,018	15,524	6.5 %
2001	91,953	72,702	19,251	6.5
2002	93,912	73,638	20,274	6.5
2003	95,522	73,657	21,865	6.5
2004	98,901	74,133	24,768	6.6
2005, midyear	101,228	74,684	26,544	6.7

**Female inmate population continues to rise at a faster rate than male inmate population**

From June 30, 2004, to June 30, 2005, the number of women under the jurisdiction of State and Federal prison authorities grew from 102,691 to 106,174, an increase of 3.4% (table 4). The number of men rose 1.3%, from 1,389,143 to 1,406,649. At midyear 2005 California, Texas, Florida, and the Federal system housed 4 of every 10 female inmates.

Since 1995 the annual rate of growth in the number of female inmates has averaged 4.7%, higher than the 3.0% average increase of male inmates. Women accounted for 7.0% of all inmates at midyear 2005, up from 6.1% at yearend 1995.

Relative to their number in the U.S. resident population, men were over 14 times more likely than women to be incarcerated in a State or Federal prison. On June 30, 2005, the rate for inmates serving a sentence of more than 1 year was 64 female inmates per 100,000 women in the United States, compared to 925 male inmates per 100,000 men.

**Table 4. Number of prisoners under the jurisdiction of State and Federal correctional authorities, by gender, 1995, 2004, and 2005**

	Male	Female
<b>All inmates</b>		
6/30/2005	1,406,649	106,174
6/30/2004	1,389,143	102,691
12/31/1995	1,057,406	68,468
Percent change, 2004-2005	1.3%	3.4%
Average annual change, 1995-2005	3.0%	4.7%
<b>Sentenced to more than 1 year</b>		
6/30/2005	1,349,223	96,778
6/30/2004	1,332,571	93,632
12/31/1995	1,021,059	63,963
<b>Incarceration rate*</b>		
6/30/2005	925	64
6/30/2004	922	63
12/31/1995	789	47

\*The total number of prisoners with a sentence of more than 1 year per 100,000 U.S. residents.

**Table 5. Number of inmates under age 18 held in State prisons, by gender, June 30, 1995, and 2000-05**

Year	Inmates under age 18		
	Total	Male	Female
2005	2,266	2,175	91
2004	2,485	2,375	110
2003	2,741	2,627	114
2002	3,038	2,927	111
2001	3,147	3,010	137
2000	3,896	3,721	175
1995	5,309	...	...

...Not available.

**Number of State inmates under age 18 continues to decline**

A total of 2,266 State prisoners were under age 18 on June 30, 2005, down from 2,485 at midyear 2004 (table 5). The number of minors held in State prisons peaked in 1995 at 5,309 and has since decreased every year. Overall, 0.2% of all State prisoners were under age 18.

Six States reported more than 100 prisoners under age 18 at midyear 2005, led by Connecticut (383), New York (223), Florida (185), and North Carolina (169). Two of these States reported an increase in their under age 18 populations held in prison during the 12 months ending June 30, 2005, while the rest experienced declines.

Three States reported no inmates under age 18, and another 19 States had 10 or fewer inmates under age 18.

**Number of prisoners under age 18**

	Number of prisoners under age 18		Percent change
	6/30/05	6/30/04	
Connecticut*	383	321	19.3%
New York	223	225	-0.9
Florida	185	214	-13.6
North Carolina	169	192	-12.0
Texas	167	210	-20.5
South Carolina	120	114	5.3

\*Includes local jail inmates under age 18.

**Table 6. Number of noncitizens held in State or Federal prisons at midyear, 1998-2005**

Year	Total	Federal	State
2005	91,117	35,285	55,832
2004	91,815	34,422	57,393
2003	90,568	34,456	56,112
2002	88,677	33,873	54,804
2001	87,917	33,886	54,031
2000	89,676	36,090	53,586
1999	88,811	33,765	55,046
1998	77,099	27,682	49,417
Percent change, 2004-2005	-0.8%	2.5%	-2.7%

**At midyear 2005, 61% of noncitizen prisoners held in State facilities; 39% in Federal facilities**

On June 30, 2005, 91,117 noncitizens were in the custody of State or Federal correctional authorities, down from 91,815 at midyear 2004 (table 6). Overall, 6.4% of State and Federal inmates at midyear 2005 were not U.S. citizens. The noncitizen prisoner population increased between 1998 and 1999, and since then it has remained nearly stable, increasing about 2.6% between midyear 1999 and midyear 2005.

At midyear 2005, 35,285 Federal inmates were noncitizens, representing about 19% of all prisoners in Federal custody. California (16,613), Texas (9,346), New York (7,444), Florida (4,772), and Arizona (4,179) held over 75% of all noncitizens confined in State prisons. Noncitizen prisoners accounted for over 10% of the prison populations of Arizona, New York, Nevada, and California.

**Noncitizens held in prison**

	Noncitizens held in prison		Percent of all inmates
	6/30/05	6/30/04	
Federal	35,285	34,442	19.3%
California	16,613	17,890	10.1
Texas	9,346	9,048	6.0
New York*	7,444	8,027	11.8
Florida	4,772	4,834	5.6
Arizona	4,179	3,924	12.7
Nevada	1,402	1,242	12.6
North Carolina	1,182	868	3.2
Illinois	1,065	782	4.2
Colorado*	1,029	1,022	5.1

\*Report foreign-born inmates rather than noncitizens.

## Growth continues as rising admissions outpace releases

From 2000 to 2004 admissions to State prison rose 11.5% (from 625,219 in 2000 to 697,066 in 2004). During 2004, 672,202 sentenced prisoners were released from State prisons, up from 604,858 in 2000 — an increase of 11.1% (table 7).

Admissions to the Federal prison system increased 21.2% between 2000 and 2004 (from 43,732 to 52,982); releases increased 32.2% (35,259 to 46,624). The number of admissions to Federal prison in 2004 exceeded releases by more than 6,300 inmates.

## New court commitments on the rise

Prior to 1998 growth in prison admissions reflected increasing numbers of offenders returning for parole violations. Between 1990 and 1998 the number of returned parole violators increased 54% (from 133,870 to 206,152), while the number of new court commitments increased 7% (from 323,069 to 347,270).

However, since 1998, parole violators returned to prison increased by less than 6%, while new court commitments rose 18%.

State prison admissions, by type, 1990, 1995, and 1998-2004

Year	All <sup>a</sup>	New court commitments		Parole violators <sup>b</sup>
1990	460,739	323,069	133,870	
1995	521,970	337,492	175,726	
1998	565,291	347,270	206,152	
1999	575,415	345,648	198,636	
2000	581,487	350,431	203,569	
2001	593,838	365,714	215,450	
2002	612,938	392,661	207,961	
2003	634,149	399,843	209,753	
2004	644,084	411,300	219,033	

<sup>a</sup>Based on inmates with a sentence of more than 1 year. Excludes escapes, AWOL's, and transfers to and from other jurisdictions.

<sup>b</sup>Parole violators includes inmates with revoked parole, other conditional release violators, and intermediate sanctions imposed upon parolees in lieu of revoking parole.

**Table 7. Number of sentenced prisoners admitted and released from State or Federal jurisdiction, by region and jurisdiction, 2000 and 2003-04**

Region and jurisdiction	Admissions				Percent change, 2000-04	Releases				Percent change, 2000-04
	2004	2003	2000			2004	2003	2000		
U.S. total	697,066	686,437	625,219	11.5%	672,202	656,384	604,858	11.1%		
Federal	52,982	52,288	43,732	21.2	46,624	44,199	35,259	32.2		
State	644,084	634,149	581,487	10.8	625,578	612,185	569,599	9.8		
<b>Northeast</b>	66,441	71,171	67,765	-2.0%	68,760	72,609	70,646	-2.7%		
Connecticut	6,577	6,571	6,185	6.3	6,707	6,890	5,918	13.3		
Maine	655	931	751	-12.8	636	782	677	-6.1		
Massachusetts	2,278	2,185	2,062	10.5	2,391	2,302	2,889	-17.2		
New Hampshire	1,099	1,139	1,051	4.6	1,080	1,188	1,044	3.4		
New Jersey	13,886	14,398	13,653	1.7	14,418	15,043	15,362	-6.1		
New York	24,664	26,040	27,601	-10.6	26,043	27,467	28,828	-9.7		
Pennsylvania	14,319	14,039	11,777	21.6	14,396	13,268	11,759	22.4		
Rhode Island <sup>a</sup>	755	3,881	3,701	:	828	3,684	3,223	:		
Vermont	2,208	1,987	984	:	2,261	1,985	946	:		
<b>Midwest</b>	144,002	136,924	117,776	22.3%	143,497	136,590	114,382	25.5%		
Illinois	39,293	36,063	29,344	33.9	38,646	35,372	28,876	33.8		
Indiana	16,029	15,615	11,876	35.0	15,100	14,146	11,053	36.6		
Iowa	4,364	5,545	4,656	-6.3	6,049	6,074	4,379	38.1		
Kansas	4,519	4,605	5,002	-9.7	4,683	4,405	5,231	-10.5		
Michigan	13,248	12,659	12,169	8.9	13,723	13,910	10,874	26.2		
Minnesota	6,604	5,914	4,406	49.9	5,849	5,437	4,244	37.8		
Missouri	18,281	17,151	14,454	26.5	17,307	16,967	13,346	29.7		
Nebraska	2,085	1,959	1,688	23.5	2,029	1,953	1,503	35.0		
North Dakota	1,008	992	605	66.6	917	870	598	53.3		
Ohio	28,196	26,506	23,780	18.6	28,170	27,369	24,793	13.6		
South Dakota	2,304	1,915	1,400	64.6	2,428	1,980	1,327	83.0		
Wisconsin	8,071	8,000	8,396	-3.9	8,596	8,107	8,158	5.4		
<b>South</b>	249,733	243,826	217,950	14.6%	238,628	231,896	210,777	13.2%		
Alabama	8,278	9,524	6,296	31.5	9,156	10,167	7,136	28.3		
Arkansas	8,035	7,132	6,941	15.8	7,457	7,120	6,308	18.2		
Delaware	1,648	2,212	2,709	:	2,013	2,129	2,260	:		
Florida	40,386	39,500	35,683	13.2	36,908	34,679	33,994	8.6		
Georgia	20,140	17,575	17,373	15.9	18,211	17,333	14,797	23.1		
Kentucky	13,009	9,595	8,116	60.3	10,740	9,208	7,733	38.9		
Louisiana	15,512	15,353	15,735	-1.4	15,009	13,841	14,536	3.3		
Maryland	10,330	10,170	10,327	0.0	10,531	10,207	10,004	5.3		
Mississippi	9,187	8,421	5,796	58.5	8,607	7,679	4,940	74.2		
North Carolina	10,411	9,494	9,848	5.7	9,315	9,116	9,687	-3.8		
Oklahoma	9,003	8,139	7,426	21.2	8,432	8,164	6,628	27.2		
South Carolina	9,850	9,934	8,460	16.4	10,060	9,829	8,676	16.0		
Tennessee	13,149	13,059	13,675	-3.8	13,295	13,768	13,893	-4.3		
Texas	66,883	69,921	58,197	14.9	65,800	65,169	59,776	10.1		
Virginia	11,645	11,700	9,791	18.9	11,148	11,606	9,148	21.9		
West Virginia	2,267	2,097	1,577	43.8	1,946	1,881	1,261	54.3		
<b>West</b>	183,908	182,228	177,996	3.3%	174,693	171,090	173,794	0.5%		
Alaska <sup>b</sup>	2,746	2,805	2,427	13.1	2,726	2,736	2,599	4.9		
Arizona	11,343	11,957	9,560	18.7	10,190	10,391	9,100	12.0		
California	123,537	125,312	129,640	-4.7	117,762	118,646	129,621	-9.1		
Colorado	8,634	7,998	7,036	22.7	8,001	7,113	5,881	36.0		
Hawaii	1,677	1,832	1,594	5.2	1,667	1,504	1,379	20.9		
Idaho	4,392	3,168	3,386	29.7	3,480	3,033	2,697	29.0		
Montana	2,182	1,910	1,202	81.5	1,897	1,642	1,031	84.0		
Nevada	6,548	4,865	4,929	32.8	4,715	4,800	4,374	7.8		
New Mexico	4,279	4,160	3,161	35.4	4,090	3,943	3,383	20.9		
Oregon	5,378	5,095	4,059	32.5	4,910	4,483	3,371	45.7		
Utah	3,275	3,301	3,270	0.2	3,050	3,088	2,897	5.3		
Washington	11,894	9,034	7,094	:	11,547	9,067	6,764	:		
Wyoming	769	791	638	20.5	658	644	697	-5.6		

Note: Excludes escapes, AWOL's, and transfers to and from other jurisdictions.

:Not calculated due to changes in reporting.

<sup>a</sup>Changed reporting in 2004 to include only prisoners sentenced to 1 year or more.

<sup>b</sup>Alaska data may include some escapes, AWOLs, and transfers.

## At midyear the Nation's jails supervised 819,434 persons

Based on the 2005 Census of Jail Inmates, the Nation's local jails held or supervised 819,434 offenders on June 30, 2005 (table 8). Jail authorities supervised 9% of these offenders (71,905) in alternative programs outside the jail facilities. A total of 747,529 persons were housed in local jails.

Year	Number held in jail	Jail incarceration rate*
2005	747,529	252
2004	713,990	243
2003	691,301	238
2002	665,475	231
2001	631,240	222
2000	621,149	220
1995	507,044	193

\*Number of jail inmates per 100,000 U.S. residents on July 1 of each year.

### Jail populations

As defined in this report, jails are locally operated correctional facilities that confine persons before or after adjudication. Inmates sentenced to jail usually have a sentence of 1 year or less. Jails also —

- receive individuals pending arraignment and hold them awaiting trial, conviction, or sentencing
- readmit probation, parole, and bail-bond violators and absconders
- temporarily detain juveniles pending transfer to juvenile authorities
- hold mentally ill persons pending their movement to appropriate mental health facilities
- hold individuals for the military, for protective custody, for contempt, and for the courts as witnesses
- release convicted inmates to the community upon completion of sentence
- transfer inmates to Federal, State, or other authorities
- house inmates for Federal, State, or other authorities because of crowding of their facilities
- sometimes operate community-based programs as alternatives to incarceration.

Among persons under community supervision by jail staff in 2005, 22% were required to perform community service (15,536) and 20% participated in a weekend reporting program (14,110). Sixteen percent of offenders in the community were under electronic monitoring; 21% were under other pretrial supervision; 3% were in a drug, alcohol, mental health, or other type of medical treatment program; and 10% were participating in a work release or other alternative work program.

## Number of jail inmates rose 33,539 in 12 months ending June 30, 2005

Between July 1, 2004 and June 30, 2005, the number of persons held in local jail facilities grew 4.7% — from 713,990 to 747,529. The 12-month increase was larger than the average annual growth (3.9%) from midyear 1995 to midyear 2005 (figure 2). The 4.7% growth in 2005 was the largest annual growth since the 5.4% growth in 2002. In absolute numbers the total increase of 33,539 inmates in 2005 was the largest increase since 1997 (48,587 new inmates).

**Table 8. Persons under jail supervision, by confinement status and type of program, midyear 1995, 2000, and 2004-05**

Confinement status and type of program	Number of persons under jail supervision			
	1995	2000	2004	2005
<b>Total</b>	541,913	687,033	784,538	819,434
<b>Held in jail</b>	507,044	621,149	713,990	747,529
Supervised outside of a jail facility <sup>a</sup>	34,869	65,884	70,548	71,905
Weekender programs	1,909	14,523	11,589	14,110
Electronic monitoring	6,788	10,782	11,689	11,403
Home detention <sup>b</sup>	1,376	332	1,173	1,497
Day reporting	1,283	3,969	6,627	4,747
Community service	10,253	13,592	13,171	15,536
Other pretrial supervision	3,229	6,279	14,370	15,458
Other work programs <sup>c</sup>	9,144	8,011	7,208	5,796
Treatment programs <sup>d</sup>	...	5,714	2,208	1,973
Other	887	2,682	2,513	1,385

...Not available.

<sup>a</sup>Excludes persons supervised by a probation or parole agency.

<sup>b</sup>Includes only those without electronic monitoring.

<sup>c</sup>Includes persons in work release programs, work gangs, and other work alternative programs.

<sup>d</sup>Includes persons under drug, alcohol, mental health, and other medical treatment.

### 12-month growth rates for local jails, 1995-2005

Percent change in local jail population from previous year, 1995-2005

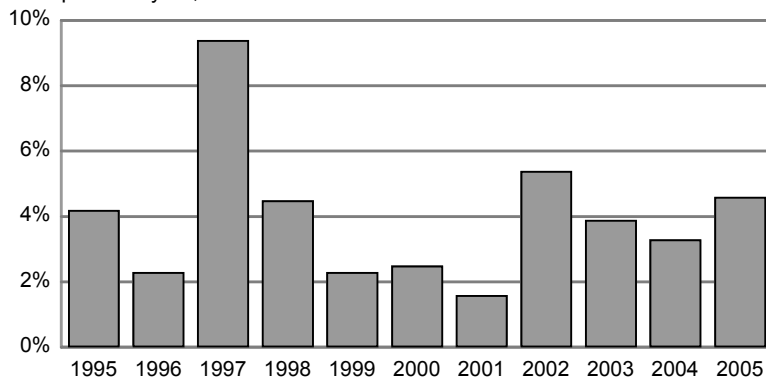


Figure 2

## Jail incarceration rates rose in the last 12-month period

Since 1995 the Nation's jail population on a per capita basis has increased 31%. During this period the number of jail inmates per 100,000 residents rose from 193 to 252.

	Estimated count	Jail incarceration rate <sup>a</sup>
Total	747,529	252
Gender		
Male	652,958	447
Female	94,571	63
Race/Hispanic origin		
White <sup>b</sup>	331,000	166
Black <sup>b</sup>	290,500	800
Hispanic/Latino	111,900	268
Other <sup>c</sup>	13,000	88
Two or more	1,000	:

Note: Inmate counts by race/Hispanic origin were estimated and rounded to the nearest 100. Resident population figures were estimated for July 1, 2005, based on the 2000 Census of Population and Housing.

:Not calculated.

<sup>a</sup>Number of jail inmates per 100,000 residents in each group.

<sup>b</sup>Non-Hispanic only.

<sup>c</sup>Includes American Indians, Alaska Natives, Asians, Native Hawaiians, and other Pacific Islanders.

When individuals under community supervision by jail authorities are included with those in custody, the rate was 276 persons per 100,000 U.S. residents at midyear 2005.

A total of 6,759 persons under age 18 were housed in adult jails on June 30, 2005 (table 9). Approximately 85% of these young inmates had been convicted or were being held for trial as adults in criminal court. The average daily population for the year ending June 30, 2005, was 733,442, an increase of 3.9% from 2004 and 43.9% from 1995.

## Characteristics of jail inmate population changing gradually

Male inmates made up 87.3% of the local jail inmate population at midyear 2005 — 2.5 percentage points lower than at midyear 1995 (table 10). During the 12-month period ending June 30, 2005, the number of adult female inmates rose 8.0%, while the number of adult male inmates increased 4.3%. On average the adult female jail population has grown 6.2%

annually in the past 10 years, while the adult male population has grown 3.7%.

At midyear 2005 nearly 6 in 10 persons in local jails were racial or ethnic minorities. Whites made up 44.3% of the jail population; blacks, 38.9%; Hispanics, 15.0%; and other races (American Indians, Alaska Natives, Asians, Native Hawaiians, and other Pacific Islanders), 1.7%.

On a per capita basis, men were over 7 times more likely than women to have been held in a local jail on June 30, 2005. Blacks were nearly 5 times more likely than whites, nearly 3 times more likely than Hispanics, and over 9 times more likely than persons of other races to have been in jail.

On June 30, 2005, 62% of the Nation's jail inmates were awaiting court action on their current charge. An estimated 284,400 inmates held in local jails were serving a sentence in jail, awaiting sentencing, or serving time for a probation or parole violation. As a percent of all jail inmates, the percent convicted has dropped from 44.0% at midyear 2000 to 38.0% at midyear 2005.

## At midyear 2005, 95% of jail capacity was occupied

In the 12 months ending June 30, 2005, fewer beds than inmates were added to the Nation's jails. At midyear 2005 the rated capacity of local jails was estimated at 789,001 beds, an increase of 33,398 in 12 months

**Table 9. Average daily population and the number of men, women, and juveniles in local jails, midyear 1995, 2000, and 2004-05**

	1995	2000	2004	2005
<b>Average daily population<sup>a</sup></b>	509,828	618,319	706,242	733,442
<b>Number of inmates, June 30</b>	507,044	621,149	713,990	747,529
Adults	499,300	613,534	706,907	740,770
Male	448,000	543,120	619,908	646,807
Female	51,300	70,414	86,999	93,963
Juveniles <sup>b</sup>	7,800	7,615	7,083	6,759
Held as adults <sup>c</sup>	5,900	6,126	6,159	5,750
Held as juveniles	1,800	1,489	924	1,009

Note: Data are for June 30. Detailed data for 1995 were estimated and rounded to the nearest 100.

<sup>a</sup>The average daily population is the sum of the number of inmates in a jail each day for a year, divided by the total number of days in the year.

<sup>b</sup>Juveniles are persons held under the age of 18.

<sup>c</sup>Includes juveniles who were tried or awaiting trial as adults.

**Table 10. Gender, race, Hispanic origin, and conviction status of local jail inmates, midyear 1995, 2000, and 2004-05**

Characteristic	1995	2000	2004	2005
Total	100%	100%	100%	100%
<b>Gender</b>				
Male	89.8%	88.6%	87.7%	87.3%
Female	10.2	11.4	12.3	12.7
<b>Race/Hispanic origin</b>				
White <sup>a</sup>	40.1%	41.9%	44.4%	44.3%
Black <sup>a</sup>	43.5	41.3	38.6	38.9
Hispanic	14.7	15.1	15.2	15.0
Other <sup>b</sup>	1.7	1.6	1.8	1.7
Two or more races <sup>c</sup>				0.1
<b>Conviction status</b>				
Convicted	44.0%	44.0%	39.7%	38.0%
Male	39.7	39.0	34.8	33.2
Female	4.3	5.0	4.9	4.8
Unconvicted	56.0	56.0	60.3	62.0
Male	50.0	50.0	53.0	54.2
Female	6.0	6.0	7.3	7.7

Note: Detail may not add to total because of rounding.

<sup>a</sup>Non-Hispanic only.

<sup>b</sup>Includes American Indians, Alaska Natives, Asians, Native Hawaiians, and other Pacific Islanders.

<sup>c</sup>More than one race was not requested prior to 2005.



(table 11). In the same 12-month period, an additional 33,539 inmates were added to the local jail population.

Rated capacity is the maximum number of beds or inmates allocated by State or local rating officials to each jail facility. The growth in jail capacity during the 12-month period ending June 30, 2005, was larger (33,398) than the average growth of 24,229 beds every 12 months since midyear 1995, and was the largest growth since 1999 (39,541).

As of June 30, 2005, 95% of the local jail capacity was occupied.<sup>2</sup> As a ratio of all inmates housed in jail facilities to total capacity, the percentage occupied increased steadily since 2001 (up 5 percentage points).

### A third of all jail inmates were held in 4 States at midyear 2005

On June 30, 2005, 4 States incarcerated more than a third of all local jail inmates: California (82,138), Texas (66,534), Florida (63,620),

<sup>2</sup>On December 31, 2004, State prison systems were between 1% below and 15% above capacity. The Federal prison system was operating at 40% above capacity. See Prisoners in 2004, October 2005, NCJ 210677.

Year	Rated capacity <sup>a</sup>	Amount of capacity added <sup>b</sup>	Percent of capacity occupied <sup>c</sup>
2005	789,001	33,398	95%
2004	755,603	19,132	94
2003	736,471	22,572	94
2002	713,899	14,590	93
2001	699,309	21,522	90
2000	677,787	25,466	92
1999	652,321	39,541	93
1998	612,780	26,216	97
1997	586,564	23,593	97
1996	562,971	17,208	92
1995	545,763		93
Average annual increase, 1995-2005	3.8%	24,229	

Note: Capacity data for 1995-98, and 2000-04 are survey estimates subject to sampling error.  
<sup>a</sup>Rated capacity is the number of beds or inmates assigned by a rating official to facilities within each jurisdiction.  
<sup>b</sup>The number of beds added during the 12 months ending June 30 of each year.  
<sup>c</sup>The number of inmates divided by the rated capacity times 100.

and Georgia (44,965) (table 12). The 10 States with the smallest jail populations each held fewer than

4,000 inmates. Collectively, jails in these States held only 3.1% of the Nation's total jail population.

Region and jurisdiction	Total inmates in custody	Local jail inmates	Prison inmates <sup>a</sup>	Total incarceration rate <sup>b</sup>	Jail incarceration rate <sup>b</sup>
U.S. total	2,186,230	747,529	1,438,701	738	252
Federal	183,187	~	183,187	62	~
State	2,003,043	747,529	1,255,514	676	252
<b>Northeast</b>	269,683	97,503	172,180	494	178
Connecticut	19,087	~	19,087	544	~
Maine	3,608	1,545	2,063	273	117
Massachusetts	22,778	12,619	10,159	356	197
New Hampshire	4,184	1,728	2,456	319	132
New Jersey	46,411	17,621	28,790	532	202
New York	92,769	29,535	63,234	482	153
Pennsylvania	75,507	34,455	41,052	607	277
Rhode Island	3,364	~	3,364	313	~
Vermont	1,975	~	1,975	317	~
<b>Midwest</b>	371,694	123,407	248,287	563	187
Illinois	64,735	20,066	44,669	507	157
Indiana	39,959	17,567	22,392	637	280
Iowa	12,215	3,637	8,578	412	123
Kansas	15,972	6,904	9,068	582	252
Michigan	67,132	18,118	49,014	663	179
Minnesota	15,422	7,023	8,399	300	137
Missouri	41,461	10,461	31,000	715	180
Nebraska	7,406	3,098	4,308	421	176
North Dakota	2,288	944	1,344	359	148
Ohio	64,123	19,853	44,270	559	173
South Dakota	4,827	1,432	3,395	622	185
Wisconsin	36,154	14,304	21,850	653	258
<b>South</b>	909,990	366,091	543,899	846	341
Alabama	40,561	15,143	25,418	890	332
Arkansas	18,693	6,125	12,568	673	220
Delaware	6,916	~	6,916	820	~
District of Columbia	3,552	3,552	~	~	645
Florida	148,521	63,620	84,901	835	358
Georgia	92,647	44,965	47,682	1,021	496
Kentucky	30,034	16,761	13,273	720	402
Louisiana	51,458	31,867	19,591	1,138	704
Maryland	35,601	12,386	23,215	636	221
Mississippi	27,902	11,422	16,480	955	391
North Carolina	53,854	17,171	36,683	620	198
Oklahoma	32,593	9,585	23,008	919	270
South Carolina	35,298	12,226	23,072	830	287
Tennessee	43,678	24,233	19,445	732	406
Texas	223,195	66,534	156,661	976	291
Virginia	57,444	26,424	31,020	759	349
West Virginia	8,043	4,077	3,966	443	224
<b>West</b>	451,676	160,528	291,148	661	235
Alaska <sup>c</sup>	4,678	65	4,613	705	~
Arizona	47,974	15,479	32,495	808	261
California	246,317	82,138	164,179	682	227
Colorado	33,955	13,638	20,317	728	292
Hawaii	5,705	~	5,705	447	~
Idaho	11,206	3,787	7,419	784	265
Montana	4,923	2,265	2,658	526	242
Nevada	18,265	7,110	11,155	756	294
New Mexico	15,081	8,514	6,567	782	442
Oregon	19,318	6,549	12,769	531	180
Utah	11,514	6,739	4,775	466	273
Washington	29,225	12,693	16,532	465	202
Wyoming	3,515	1,551	1,964	690	305

~Not applicable. Prisons and jails form one integrated system.  
 Data include total inmate population.  
<sup>a</sup>All inmates in public and private custody of State and Federal correctional authorities.  
<sup>b</sup>Number of inmates per 100,000 residents on June 30, 2005.  
<sup>c</sup>Except for 14 locally operated jails, Alaska has an integrated jail and prison system.

The number of jail inmates per 100,000 U.S. residents totaled 252 on June 30, 2005. Of the 21 States with rates greater than that the national average, 11 were in the South, 7 were in the West, 2 in the Midwest, and 1 was in the Northeast. States that had the largest number of jail inmates per 100,000 residents were Louisiana (703), Georgia (496), New Mexico (442), Tennessee (406), and Kentucky (402). Five States — Maine (117), Iowa (123), New Hampshire (132), and Minnesota and North Dakota (both 137) — had rates that were less than 150 jail inmates per 100,000 State residents. The District of Columbia, an entirely urban jurisdiction, had a rate of 645 jail inmates.

**Louisiana and Georgia held at least 1% of their State population in prison or jail**

More than 1% of residents in Louisiana and Georgia were in prison or jail at midyear 2005. Louisiana led the Nation with 1,138 prison and jail inmates per 100,000 State residents, followed by Georgia (1,021) and Texas (976). Maine (273), Minnesota (300), Rhode Island (313), and Vermont (317) held the fewest inmates relative to their State populations.

Southern States had significantly higher total incarceration rates than States in other regions. Ten of the 14 States with rates higher than the national total were in the South. Arizona (808 inmates per 100,000 residents), New Mexico (782), Idaho (784), and Nevada (752) were the only

States outside of the South with rates above the national average. The combined prison and jail incarceration rates totaled 846 in the South, followed by 663 in the West, 563 in the Midwest, and 494 in the Northeast.

States also varied in the percentage of inmates held in local jails. Among all States at midyear 2005, 37% of inmates were housed in local facilities. Louisiana (with the highest incarceration rate) also had the largest percentage housed in local facilities (62%). Local jails in Utah (59%), New Mexico (57%), Kentucky (56%), Tennessee (55%), Massachusetts (55%), and West Virginia (51%) also held more than half of their State's inmates. Excluding States with integrated prison and jail systems, Missouri held the largest proportion of its inmates in its State prisons (75%), followed by Michigan (73%).

**An estimated 12% of black males in their late twenties were in prison or jail in 2005**

When total incarceration rates are estimated separately by age group, black males in their twenties and thirties are found to have very high rates relative to other groups (table 13). Among the nearly 2.2 million offenders incarcerated on June 30, 2005, an estimated 548,300 were black males between the ages of 20 and 39. Of black non-Hispanic males age 25 to 29, 11.9% were in prison or jail, compared to 3.9% of Hispanic males and about 1.7% of white males

in the same age group. In general, the incarceration rates for black males of all ages were 5 to 7 times greater than those for white males in the same age groups.

Female incarceration rates, though significantly lower than male rates at every age, reveal similar racial and ethnic disparities. The incarceration rate for Black non-Hispanic females was 347 per 100,000 almost 2½ times higher than the rate for Hispanic females (144 per 100,000) and 4 times higher than the rate for white females (88 per 100,000). These differences among white, black, and Hispanic females were consistent across all age groups.

**Black incarceration rate highest in South Dakota; Hispanic rate highest in Pennsylvania**

When incarceration rates by State (excluding Federal inmates) are estimated separately by gender, race, and Hispanic origin, male rates are found to be 10 times higher than female rates; black rates 5½ times higher than white rates; and Hispanic rates nearly 2 times higher than white rates (table 14). The largest differences in incarceration rates between men and women are in New York (16½ times higher for men) and Rhode Island (16 times higher for men). The largest differences in rates between whites and blacks are in Iowa (14 times higher for blacks) and Connecticut, New Jersey, and Vermont (more than 12 times higher for blacks), and between whites and Hispanics in Connecticut and Massachusetts (more than 6 times higher for Hispanics).

**Table 13. Number of inmates in State or Federal prisons and local jails per 100,000 residents, by gender, race, Hispanic origin, and age, June 30, 2005**

Age	Number of inmates per 100,000 residents of each group							
	Males				Females			
	Total <sup>a</sup>	White <sup>b</sup>	Black <sup>b</sup>	Hispanic	Total <sup>a</sup>	White <sup>b</sup>	Black <sup>b</sup>	Hispanic
Total	1,371	709	4,682	1,856	129	88	347	144
18-19	1,739	905	5,306	2,072	116	76	257	168
20-24	3,291	1,627	10,486	3,878	277	206	611	317
25-29	3,462	1,682	11,955	3,884	299	220	720	287
30-34	3,122	1,693	10,472	3,640	342	255	855	312
35-39	2,765	1,562	9,425	3,111	364	260	957	322
40-44	2,240	1,299	7,575	2,649	264	177	751	264
45-54	1,214	658	4,401	1,873	110	70	323	138
55 or older	260	167	879	562	12	9	26	26

Note: Based on the U.S. resident population for January 1, 2005, by gender, race, and Hispanic origin. Detailed categories exclude persons who reported two or more races.  
<sup>a</sup>Includes American Indians, Alaska Natives, Asians, Native Hawaiians, and other Pacific Islanders.  
<sup>b</sup>Excludes Hispanics.

**Table 14. Number of inmates in State prisons and local jails per 100,000 residents, by gender, race, and Hispanic origin, June 30, 2005**

Region and jurisdiction	Number of inmates per 100,000 residents <sup>a</sup>				
	Male	Female	White <sup>b</sup>	Black <sup>b</sup>	Hispanic
All States	1,249	121	412	2,290	742
<b>Northeast</b>	947	66	225	2,060	895
Connecticut	1,030	85	211	2,532	1,401
Maine	513	44	262	1,992	/
Massachusetts	687	45	201	1,635	1,229
New Hampshire	590	56	289	2,666	1,063
New Jersey	1,019	70	190	2,352	630
New York	935	57	174	1,627	778
Pennsylvania	1,155	92	305	2,792	1,714
Rhode Island	607	38	191	1,838	631
Vermont	598	45	304	3,797	/
<b>Midwest</b>	1,046	97	351	2,278	450
Illinois	951	79	223	2,020	415
Indiana	1,165	126	463	2,526	579
Iowa	751	83	309	4,200	764
Kansas	1,054	117	443	3,096	/
Michigan	1,262	85	412	2,262	397
Minnesota	553	52	212	1,937	/
Missouri	1,323	133	487	2,556	587
Nebraska	756	93	290	2,418	739
North Dakota	632	87	267	2,683	848
Ohio	1,040	103	344	2,196	613
South Dakota	1,092	157	470	4,710	/
Wisconsin	1,209	107	415	4,416	/
<b>South</b>	1,559	157	536	2,156	399
Alabama	1,665	161	542	1,916	/
Arkansas	1,231	136	478	1,846	288
Delaware	1,547	128	396	2,517	683
District of Columbia <sup>c</sup>	1,202	145	56	1,065	267
Florida	1,541	155	588	2,615	382
Georgia	1,877	184	623	2,068	576
Kentucky	1,287	173	561	2,793	757
Louisiana	2,134	195	523	2,452	244
Maryland	1,219	88	288	1,579	/
Mississippi	1,790	168	503	1,742	611
North Carolina	1,154	104	320	1,727	/
Oklahoma	1,645	209	740	3,252	832
South Carolina	1,558	137	415	1,856	476
Tennessee	1,339	151	487	2,006	561
Texas	1,772	186	667	3,162	830
Virginia	1,393	144	396	2,331	487
West Virginia	817	84	392	2,188	211
<b>West</b>	1,193	130	500	3,014	839
Alaska	1,232	141	500	2,163	380
Arizona	1,443	171	590	3,294	1,075
California	1,246	119	460	2,992	782
Colorado	1,279	166	525	3,491	1,042
Hawaii	787	109	453	851	185
Idaho	1,379	185	675	2,869	1,654
Montana	926	129	433	3,569	846
Nevada	1,319	173	627	2,916	621
New Mexico	1,421	163	:	:	:
Oregon	965	101	502	2,930	573
Utah	803	127	392	3,588	838
Washington	831	101	393	2,522	527
Wyoming	1,189	184	:	:	:

Note: Counts by race and Hispanic origin were estimated, using data reported in the *Census of Jail Inmates, 2005*, and the *National Prisoners Statistics, June 30, 2005*. To correct for missing data, reported counts for each group were aggregated by State, converted to percentages, and then multiplied by the total prison and jail custody counts. These estimates were then summed to provide the estimated number of State inmates in each group.

/Not reported.

:Not calculated.

<sup>a</sup>Based on intercensal estimates of each State's resident population (by race and Hispanic origin) for July 1, 2004, and then adjusted to the State resident totals for July 1, 2005.

<sup>b</sup>Excludes Hispanics.

<sup>c</sup>Excludes all inmates sentenced to more than 1 year held by the Federal Bureau of Prisons.

South Dakota led the Nation with an estimated 4,710 black prison and jail inmates per 100,000 black State residents, followed by Wisconsin (4,416), and Iowa (4,200). Pennsylvania with 1,714 Hispanic inmates per 100,000 Hispanic residents, Idaho (1,654), and Connecticut (1,401) had the highest Hispanic incarceration rates.

## Methodology

### *National Prisoner Statistics*

The Bureau of Justice Statistics (BJS), with the U.S. Census Bureau as its collection agent, obtains yearend and midyear counts of prisoners from departments of correction in each of the 50 States and the Federal Bureau of Prisons.

The National Prisoner Statistics (NPS) distinguishes prisoners *in custody* from those *under jurisdiction*. To have custody of a prisoner, a State must hold that person in one of its facilities. To have jurisdiction means that a State has legal authority over the prisoner. Prisoners under a State's jurisdiction may be in the custody of a local jail, another State's prison, or other correctional facility. Some States are unable to provide both custody and jurisdiction counts.

Excluded from NPS counts are persons confined in locally administered confinement facilities who are under the jurisdiction of local authorities. NPS counts include all inmates in State-operated facilities in Alaska, Connecticut, Delaware, Hawaii, Rhode Island, and Vermont, which have combined jail-prison systems. NPS excludes inmates held by the District of Columbia (DC), which as of yearend 2001 operated only a jail system. (See National Prisoner Statistics jurisdiction notes, page 13, appended to the report in portable document format (pdf) on the BJS website <<http://www.ojp.usdoj.gov/bjs/abstract/pjim05.htm>>.)



Washington, DC 20531

Official Business  
Penalty for Private Use \$300

---

### *Census of Jail Inmates, 2005*

The 2005 Census of Jail Inmates was the eighth in a series. Previous censuses of jails were conducted in 1970, 1972, 1978, 1983, 1988, 1993, and 1999. To reduce respondent burden and improve data quality and timeliness, the census was split into two parts: the Census of Jail Inmates, 2005, and the Census of Jail Facilities, 2006, (conducted on March 31, 2006). As in previous censuses, the U.S. Census Bureau was the collection agent for BJS.

The 2005 Census of Jail Inmates included all locally administered confinement facilities (under the authority of 2,853 local jurisdictions). These facilities are intended for adults but sometimes hold juveniles. They hold inmates beyond arraignment and are staffed by municipal or county employees. The census also included 42 jails that were privately operated under contract for local governments and 65 multi-jurisdiction jails that were administered by two or more local governments. Included in the census, but excluded from this report due to lack of comparability with previous

survey years, were 13 facilities maintained by the Federal Bureau of Prisons and functioning as jails.

Excluded from the census were temporary holding facilities, such as drunk tanks and police lockups, that do not hold persons after they are formally charged in court (usually within 72 hours of arrest). Also excluded were State-operated facilities in Alaska, Connecticut, Delaware, Hawaii, Rhode Island, and Vermont, which have combined jail-prison systems.

Fourteen locally operated jails in Alaska were included.

All jail jurisdictions responded to the census, resulting in a 100% response rate.

This report in portable document format and in ASCII and its related statistical data and tables are available at the BJS World Wide Web Internet site: <<http://www.ojp.usdoj.gov/bjs/>>

#### **Office of Justice Programs**

Partnerships for Safer Communities  
<http://www.ojp.usdoj.gov>

The Bureau of Justice Statistics is the statistical agency of the U.S. Department of Justice. Jeffrey L. Sedgwick is Director. BJS Bulletins present the first release of findings from permanent data collection programs such as the National Prisoner Statistics program and the Census of Jail Inmates.

Paige M. Harrison and Allen J. Beck wrote this report. Jennifer C. Karberg and Seri Palla verified the report and provided statistical assistance. Tina Dorsey and Marianne W. Zawitz produced and edited the report.

Lisa A. McNelis and Pamela H. Butler carried out data collection and processing under the supervision of Charlene M. Sebold, Governments Division, Census Bureau, U.S. Department of Commerce. Martha A. Greene and Patricia D. Torreyson assisted in data collection. Duane H. Cavanaugh and Diron J. Gaskins provided technical assistance.

May 2006, NCJ 213133

---

## National Prisoner Statistics jurisdiction notes

**Alaska** — Prisons and jails form one integrated system. All NPS data include jail and prison populations. Jurisdiction counts exclude inmates held in local jails that are operated by communities.

**Arizona** — Counts are based on custody data.

**California** — Jurisdiction counts include unsentenced inmates temporarily housed in local jails or in hospitals.

**Colorado** — Counts include 71 inmates housed in local jails, 3,074 inmates in Colorado contract, and 235 inmates in the Youthful Offender System, which was established primarily for violent juvenile offenders. Counts of inmates with sentences of more than 1 year include an undetermined number with a sentence of 1 year or less. Report foreign-born inmates rather than noncitizens.

**Connecticut** — Prisons and jails form one integrated system. All NPS data include jail and prison populations.

**Delaware** — Prisons and jails form one integrated system. All NPS data include jail and prison populations.

**Federal** — Custody counts include inmates housed in privately operated secure facilities under contract with BOP or with a State or local government that has an intergovernmental agreement. Also includes inmates held in privately operated community correctional centers. Racial categories include 42,028 inmates of Hispanic origin.

**Georgia** — Counts are based on custody data.

**Hawaii** — Prisons and jails form one integrated system. All NPS data include jail and prison populations.

**Illinois** — Counts are based on jurisdiction data. Counts of inmates with sentences of more than 1 year include an undetermined number with a sentence of 1 year.

**Iowa** — Counts are based on custody data. Counts of inmates with sentences of more than 1 year include an undetermined number with a sentence of 1 year or less and unsentenced inmates.

**Kansas** — Counts of inmates with sentences of more than 1 year include an undetermined number with a sentence of 1 year or less.

**Louisiana** — Counts include 16,218 males and 1,445 females housed in local jails as a result of a partnership with the Louisiana Sheriff's Association and local authorities.

**Maryland** — Counts by sentence length are estimates extracted from actual sentence length breakdowns from automated data and applied to totals based on manual data. Report foreign-born inmates rather than noncitizens.

**Massachusetts** — Jurisdiction counts exclude approximately 6,200 male inmates in the county system (local jails and houses of correction) serving a sentence of over 1 year. These male inmates are included in Massachusetts' incarceration rate. By law offenders may be sentenced to terms up to 2½ years in locally operated jails and correctional institutions.

**Michigan** — Jurisdiction counts exclude inmates who are out to court.

**Missouri** — Report foreign-born inmates rather than noncitizens.

**New Jersey** — Counts of inmates with sentences of more than 1 year include an undetermined number with a sentence of 1 year.

**New York** — Report foreign-born inmates rather than noncitizens.

**Ohio** — Counts of inmates with sentences of more than 1 year include an undetermined number with a sentence of 1 year or less.

**Oklahoma** — Counts of inmates with sentences of more than 1 year include an undetermined number with a sentence of 1 year or less.

**Rhode Island** — Prisons and jails form one integrated system. All NPS data include jail and prison populations.

**Tennessee** — Report foreign-born inmates rather than noncitizens.

**Vermont** — Prisons and jails form an integrated system. All NPS data include jail and prison populations.

**Wisconsin** — Custody counts exclude inmates held in non-Wisconsin DOC facilities under contract.