



---

# CUSTODY DIVISION POPULATION YEAR END REVIEW

*2018*

Los Angeles County Sheriff's Department

---

*Alex Villanueva, Sheriff*

---

# TABLE OF CONTENTS

Executive Summary.....	3
1. Population Trends.....	5
LA County Inmate Population Graphs	
Monthly ADIP Trend	
Arrests, Bookings and Releases	
Release Practices	
Homeless and Veteran	
2. Facilities Overview.....	12
Rated Capacities - Board of State and Community Corrections	
Jail Housing Facilities	
Men's Central Jail	
Twin Towers Correctional Facility	
Century Regional Detention Center	
Pitchess Detention Center – East	
Pitchess Detention Center – North	
Pitchess Detention Center – South	
North County Correctional Facility	
3. Population Overview.....	19
Inmate Population Demographics	
Inmate Population Offender Age Groups	
Classification and Re-Classification	
Re-classification Statistics	
Inmate Population Breakdown	
Crime Classification Statistics	
Inmates with M7	
Pre-Trial Population	
Pre-Trial Misdemeanor Population	
Pre-Trial Bail Holds	
Mental Health Inmate Population	
Misdemeanor Incompetent to Stand Trial (MIST)	
Americans with Disabilities Act (ADA)	
Medical Housing	
4. In-Custody Programs.....	33
Credit Earnings	
Conservation Work Program (CWP)	
Education Based Incarceration Program (EBI)	
Fire Camp Training Program	
CDCR Fire Camp Program	
Back on Track (BOT)	
In-Custody S.T.A.R.T Program	

5. Alternatives to Custody Programs.....	37
Community Transition Unit (CTU)	
Substance Abuse Treatment and Reentry Transition (S.T.A.R.T)	
Community Grant Beds	
Veteran’s Administration (VA)	
Transitional Case Management Program (TCM)	
Tarzana Treatment Center DMH/SUD Program	
Mental Health Diversion – Normandie Village/Gateway	
Community Based Alternatives to Custody (CBAC)	
6. Re-Entry Assistance.....	41
Community Re-Entry and Resource Center (CRRC)	
CTU Coordinated Releases to Various Programs	
CTU Vital Records	

## **EXECUTIVE SUMMARY**

### **2018 Year End**

The average daily inmate population (ADIP) of the County jail system in 2018 was 17,211. This number includes approximately 301 inmates who were serving their sentences outside of the jail in community based alternatives to custody programs. This is an increase from the 2017 average ADIP of 17,024.

In 2018, there were a total of 298,298 arrests, and of those arrests 109,706 were booked into the jail system. The number of bookings into the jail system decreased from 110,941 in 2017 to 109,706 in 2018. The resultant inmate population was comprised primarily of men, 87 percent, and the 18-34 age group represented 57 percent.

Approximately 43 percent of the inmate population was comprised of sentence status 1 inmates, often referred to as pre-trial inmates. This population increased by approximately one percent (1%) from the previous year (7,207 average in 2017 to 7,294 average in 2018). The Department began tracking bail amounts during the third quarter of 2016. In 2018, an average of 2,720 inmates (37 percent of the pre-trial population) were held without bail. That number has slightly increased (6%) from 2,566 in 2017. For more bail information see page 30 of this report.

The sentenced population was split between inmates traditionally sentenced to County jail time (approximately 8 percent) and those sentenced to County jail under AB109 (approximately 17 percent). On average 794 inmates, approximately 5 percent of the population, were housed awaiting transfer to the California Department of Corrections and Rehabilitation.

In 2018, the Department began compiling reports on the number of inmates who identified themselves as being homeless and/or a veteran of the United States military. On average there were 3,511 individuals in custody who reported they were homeless, and 346 who identified themselves as a veteran. For further information regarding these populations see page 11 of this report.

The number of inmates who required mental health treatment steadily increased throughout the year. By years end, 30 percent of the inmate population was receiving some level of mental health treatment, resulting in an 11 percent increase over the 2017 average. All the different groups of mentally ill population had increased compared to the previous year. "K-10 Moderate Observation housing (MOH)" increased by 36%, "High Observation Housing" (HOH) increased by 13%, "Moderate Observation housing (MOH)" increased by 10%, and "General Population on Psychotropic Medication" increased by 12%. Some of these inmates were too ill to be safely housed in a multi-person cell and were housed alone. This made the second bed in these multi-person cells unavailable for use. The loss of bed space caused overcrowding in general population housing areas. Relief for this overcrowding necessitated an expansion of the Department's early release practices.

In 2018, conditions of over-crowding remained and necessitated the continued use of percentage release to manage the inmate population. Inmates serving traditional county sentence completed 10 percent of their court ordered sentences. Inmates who were serving sentences for designated serious and/or violent offenses (M7 charges) and those sentenced under 1170 PC (AB109) continued to serve 100 percent of their sentences,

minus any time credits earned. For further information regarding this year's percentage release criteria see page 10 of this report.

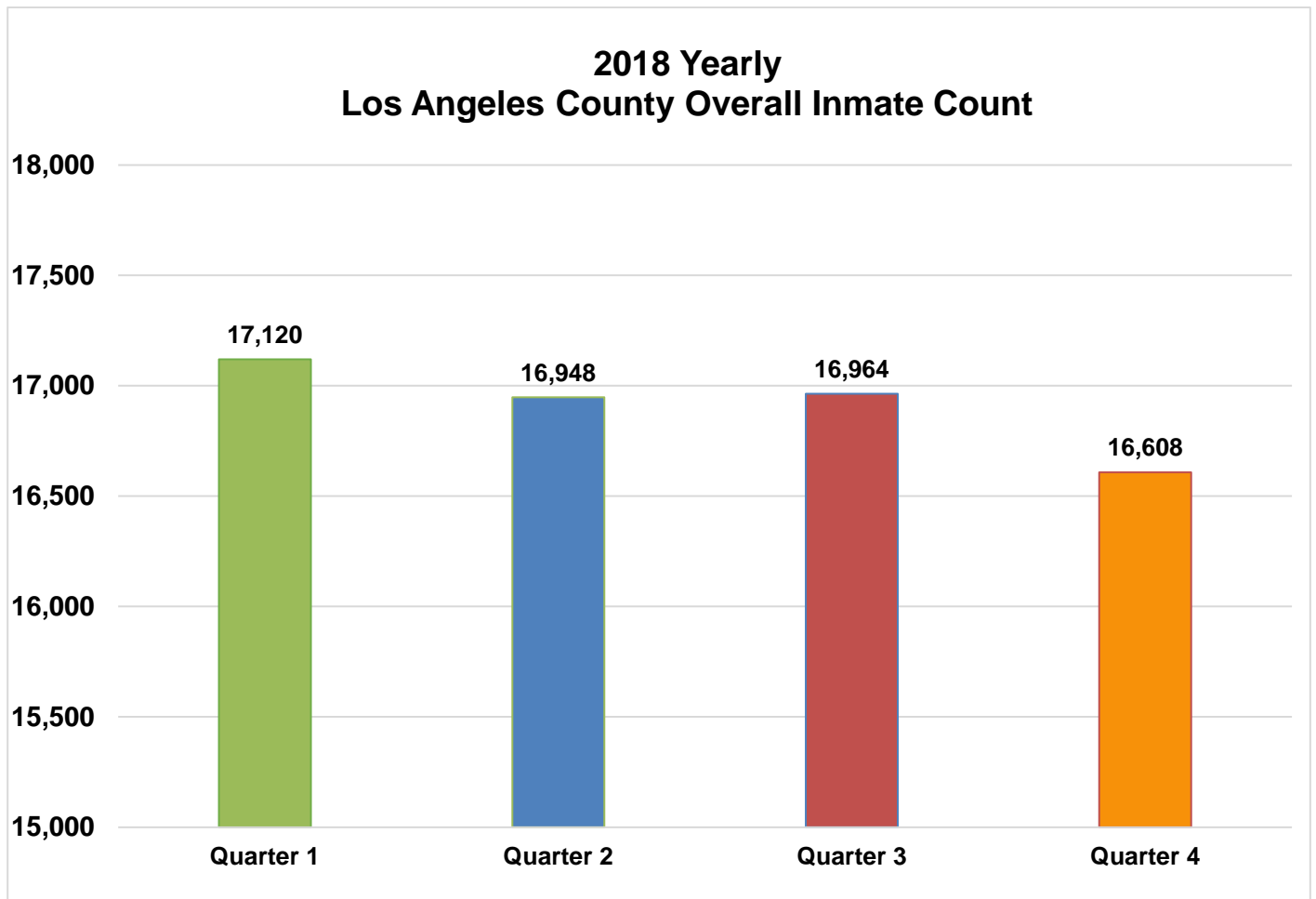
Beginning in April 2018 the Sheriff's Department began awarding all sentenced inmates additional credits under 4024.1PC. Any inmate sentenced to 300 days or longer were given an additional 25 days credit. The vast majority of AB109 inmates would receive the additional 25 days, as most AB109 inmates were sentenced 300 days or more.

The average number of inmates participating in an Alternative to Custody (ATC) Program continually decreased by 38 percent in 2018, due to the reduction in the release percentage and difficulty to find qualified inmates who meet both the LASD criteria and the Medi-Cal requirements for ATC programs. For additional information regarding ATC programs see page 39 of this report.

***Information encompassed in this report/document depicts data related to a specific date and time. Data may differ based on numerous factors related to an inmate's status, disposition, facility, etc. Information may differ based on systems queried, archived information, date/time parameters or numerous other factors. Information in disparate reports should not be combined as data sets may be inconsistent in queries and responses.***

# POPULATION TRENDS

## LA COUNTY INMATE POPULATION

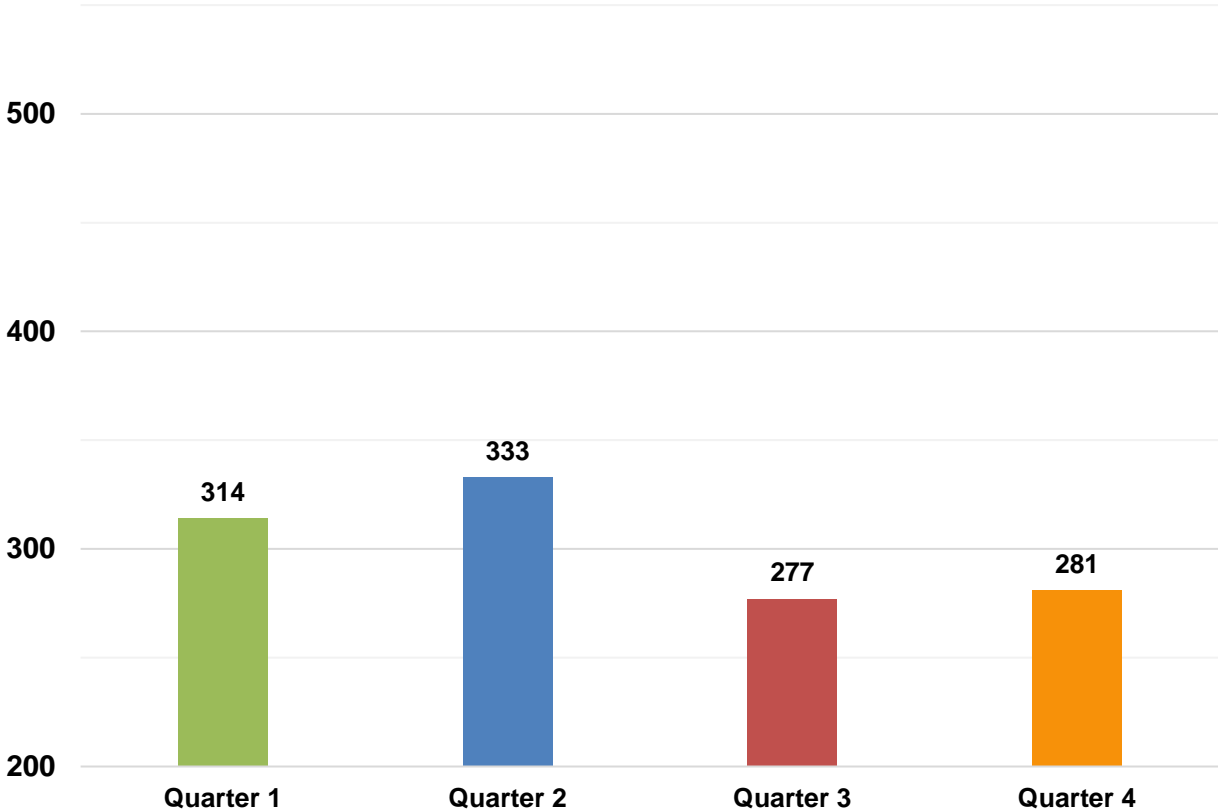


**2018 Yearly Overall  
Division ADIP**

**16,910**

*Yearly Division ADIP reflects all inmates processing into IRC, excludes ATC.*

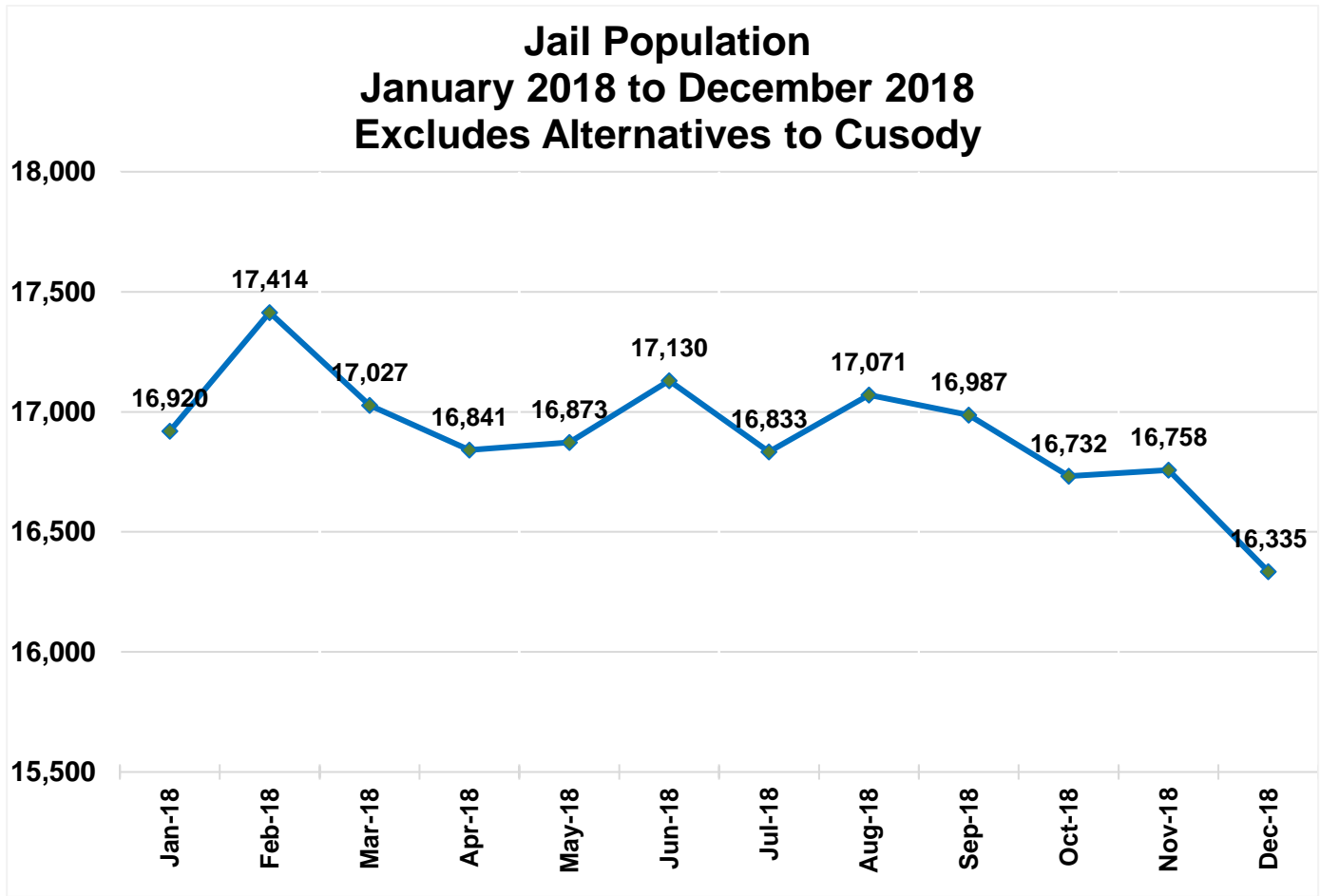
**2018 Yearly  
Los Angeles County Alternative to Custody Inmate Count**



<b>2018 Yearly ATC ADIP</b>
<b>301</b>



## Monthly ADIP Trend



Eight Year ADIP Comparison		
Year	ADIP	Notes
2011	15,014	(Oct - AB109 enacted)
2012	18,043	
2013	18,687	
2014	18,680	(Nov - Prop 47)
2015	17,049	
2016	16,613	
2017	17,024	
2018	16,910	

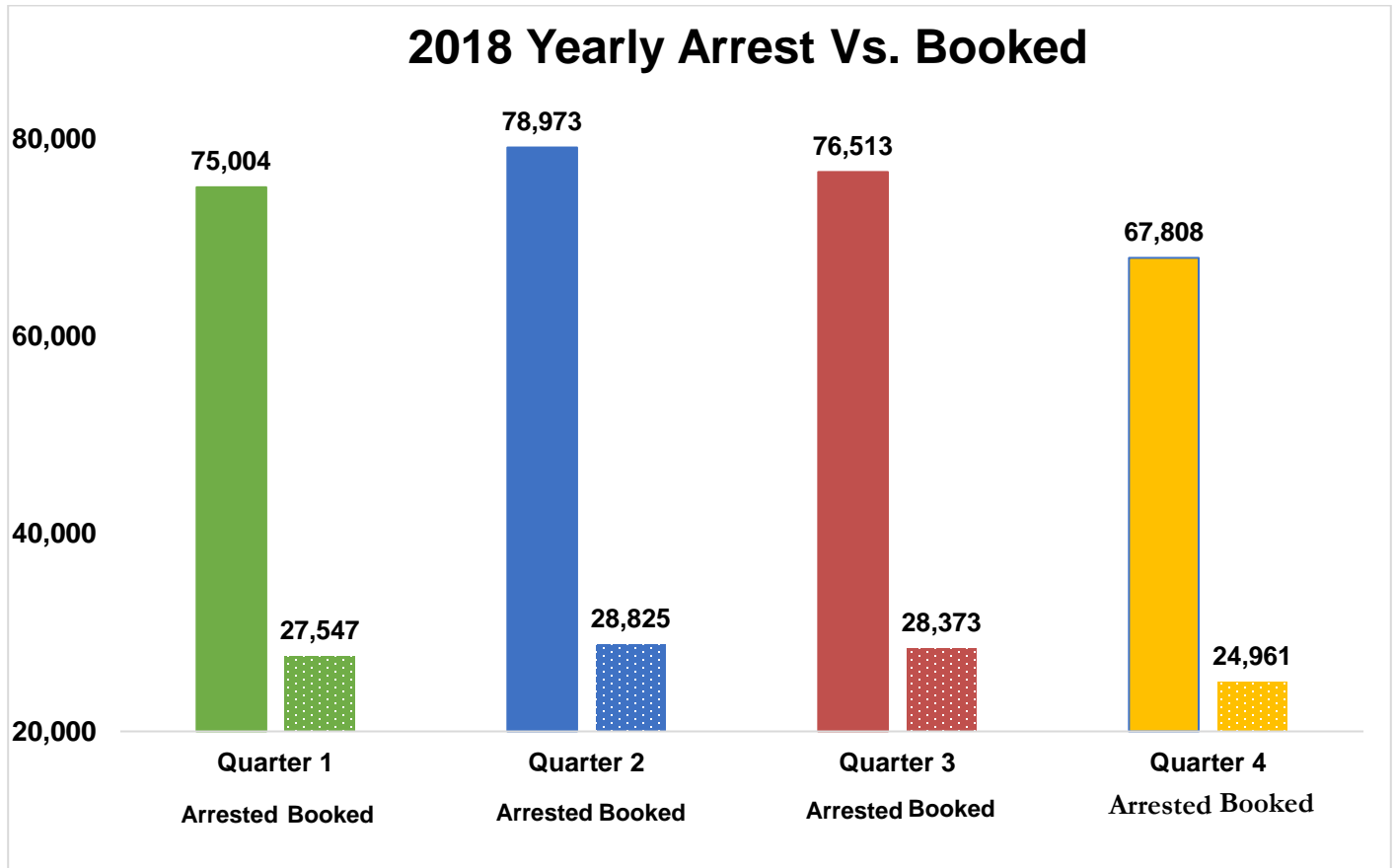
## 2018 - ARRESTS AND BOOKING STATS

While arrests decreased in 2018 from 306,534 in 2017, bookings into the county jail also decreased (2017 total 110,941).

	Quarter 1		Quarter 2		Quarter 3		Quarter 4		Yearly Total	Yearly Average	Yearly %
	Quarterly Total	%	Quarterly Total	%	Quarterly Total	%	Quarterly Total	%			
<b>Felony</b>	20,727	28%	28,367	36%	27,987	37%	25,220	37%	102,301	25,575	34%
<b>Misdemeanor</b>	46,285	62%	47,194	60%	46,173	60%	40,965	60%	180,617	45,154	61%
<b>Other</b>	7,992	10%	3,412	4%	2,353	3%	1,623	3%	15,380	3,845	5%
<b>Total Arrested</b>	<b>75,004</b>		<b>78,973</b>		<b>76,513</b>		<b>67,808</b>		<b>298,298</b>	<b>74,574</b>	
<b>Total Booked into LA County</b>	<b>27,547</b>	<b>37%</b>	<b>28,825</b>	<b>36%</b>	<b>28,373</b>	<b>37%</b>	<b>24,961</b>	<b>37%</b>	<b>109,706</b>	<b>27,427</b>	<b>37%</b>

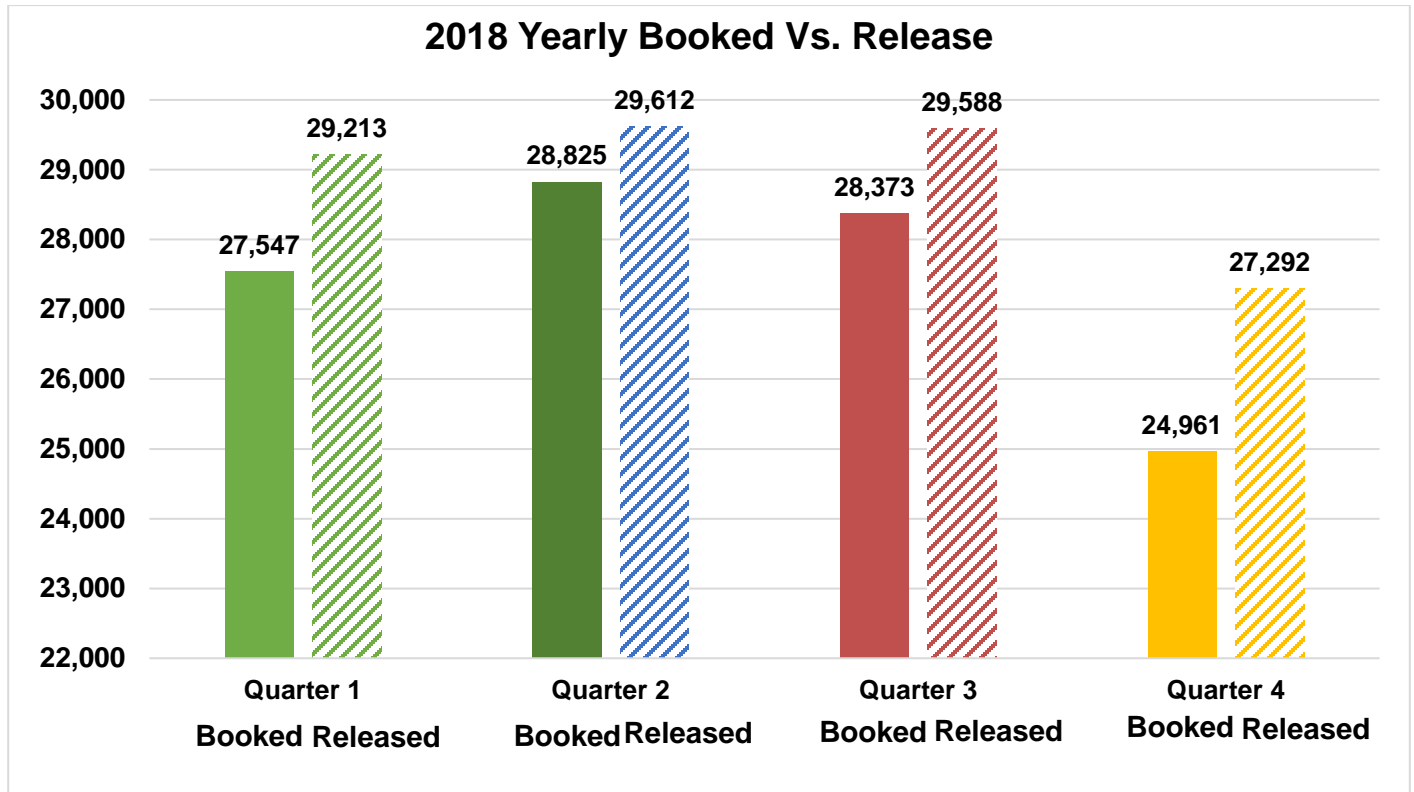
## 2018 YEARLY - ARRESTS VS. BOOKINGS

The graph below compares the total Arrests vs. Bookings for 2018.



## 2018 YEARLY - BOOKINGS VS. RELEASES

The Department released approximately 115,705 inmates in 2018.



## LA COUNTY JAIL RELEASE PRACTICES FOR 2018

Due to conditions of overcrowding, during this year traditional county sentenced inmates were subject to early release under the following conditions.

Quarter	Release Criteria Male	Release Criteria Female	**M7 Release Criteria	***Short Sentence Male	***Short Sentence Female
Quarter 1	10%	10%	100%	180 days	180 days
Quarter 2	10%	10%	100%	180 days	180 days
Quarter 3	10%	10%	100%	180 days	180 days
Quarter 4	10%	10%	100%	180 days	180 days

\*\*Inmates who have designated serious and/or violent offences or have notoriety in the community are classified as M7, which requires their record jacket go through extra 'security' checks prior to release from Sheriff's custody.

\*\*\*Shorts are inmates who are sentenced to a term in county jail, which after all legal credits are awarded and the current jail percentage time is considered, are immediately released from Sheriff's custody after processing from court.

## HOMELESS AND VETERAN

### Homeless Population

The chart below provides an average breakdown of the inmate population who stated they were homeless by gender, major race and age category, which is 21% of the total population.

	Quarter 1	Quarter 2	Quarter 3	Quarter 4	TOTAL	AVERAGE
Male	2,450	2,149	3,749	3,800	12,148	3,037
Female	423	400	519	555	1,897	474
<b>Total</b>	<b>2,873</b>	<b>2,549</b>	<b>4,268</b>	<b>4,355</b>	<b>14,045</b>	<b>3,511</b>

	Quarter 1	Quarter 2	Quarter 3	Quarter 4	TOTAL	AVERAGE
Hispanic	1,360	1,169	1,924	2,004	6,457	1,614
Black	789	715	1,356	1,365	4,225	1,056
White	638	587	849	848	2,922	731
Other	86	78	139	138	441	110
<b>Total</b>	<b>2,873</b>	<b>2,549</b>	<b>4,268</b>	<b>4,355</b>	<b>14,045</b>	<b>3,511</b>

	Quarter 1	Quarter 2	Quarter 3	Quarter 4	TOTAL	AVERAGE
18 to 25	500	401	827	830	2,558	640
26 to 34	989	856	1,374	1,453	4,672	1,168
35 to 39	409	367	600	620	1,996	499
40 to 44	290	273	430	421	1,414	354
45 & Older	684	652	1,037	1,031	3,404	851
<b>Total</b>	<b>2,873</b>	<b>2,549</b>	<b>4,268</b>	<b>4,355</b>	<b>14,045</b>	<b>3,511</b>

\*PMB discovered a software reporting error that had resulted in the under reporting of homeless inmates housed in the jail system.

\*\* Data for Quarter 1 and Quarter 2 were collected by CTU from COMPAS. Data for Quarter 3 and Quarter 4 were collected from ATAR.

### Veteran Population

The chart below provides an average breakdown of the inmate population who stated they have served in the United State Military by gender, major race and age category, which is 2% of the total population.\*

	Quarter 1	Quarter 2	Quarter 3	Quarter 4	TOTAL	AVERAGE
Male	270	316	394	384	1,364	341
Female	2	1	7	9	19	5
<b>Total</b>	<b>272</b>	<b>317</b>	<b>401</b>	<b>393</b>	<b>1,383</b>	<b>346</b>

	Quarter 1	Quarter 2	Quarter 3	Quarter 4	TOTAL	AVERAGE
Hispanic	72	90	112	104	378	95
Black	99	114	147	155	515	129
White	91	98	124	118	431	108
Other	11	15	18	16	60	15
<b>Total</b>	<b>272</b>	<b>317</b>	<b>401</b>	<b>393</b>	<b>1,383</b>	<b>346</b>

	Quarter 1	Quarter 2	Quarter 3	Quarter 4	TOTAL	AVERAGE
18 to 25	14	15	27	19	75	19
26 to 34	56	73	91	71	291	73
35 to 39	34	45	59	67	205	51
40 to 44	20	27	39	41	127	32
45 & Older	148	157	185	195	685	171
<b>Total</b>	<b>272</b>	<b>317</b>	<b>401</b>	<b>393</b>	<b>1,383</b>	<b>346</b>

\*These are numbers based upon self-identification and have not been confirmed by the Veterans Administration.

\*Effective September 2018, veteran data was collected from ATAR.

# **FACILITY OVERVIEW**

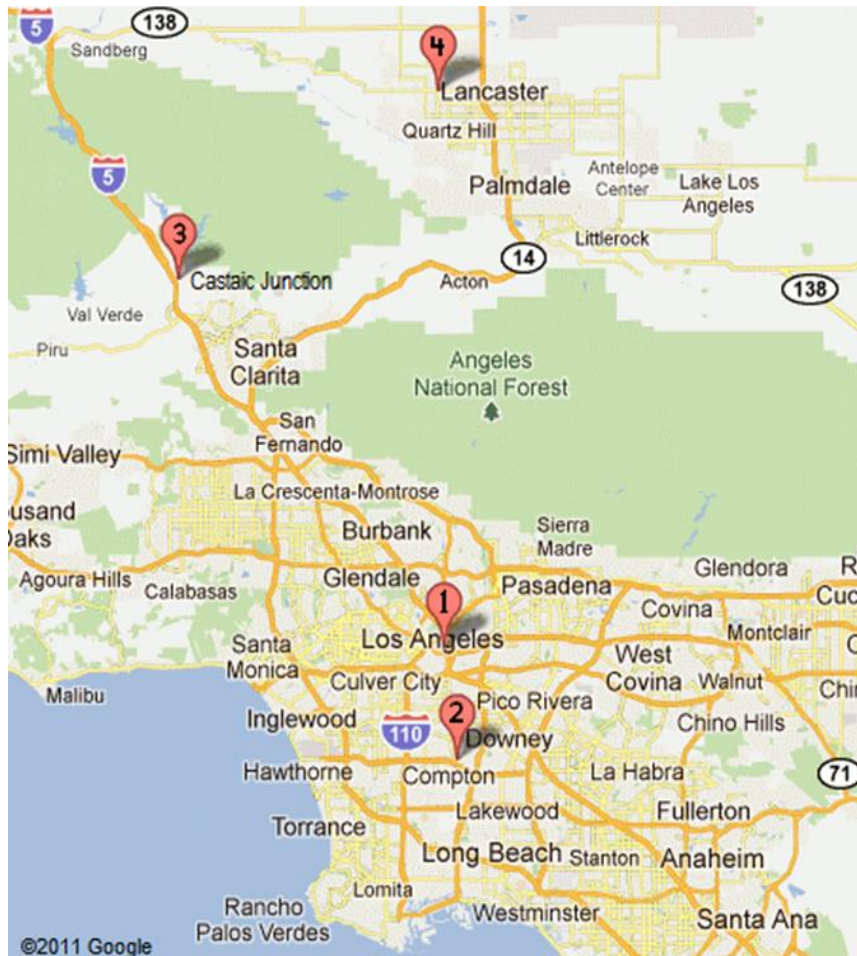
## RATED CAPACITY

The Board of State and Community Corrections (BSCC) is a government body which recommends capacity limits for county jails. BSCC conducts biennial jail inspections; LASD was rated in April 2016.

<b>Board of State and Community Corrections</b>				
LASD CUSTODY FACILITY	BSCC RATED CAPACITY	YEARLY FACILITY ADIP	ABOVE BSCC RATED CAPACITY	% BSCC CAPACITY
MEN'S CENTRAL JAIL	3,529	4,309	780	122%
TWIN TOWERS CORRECTIONAL FACILITY	2,484	3,383	899	136%
CENTURY REGIONAL DETENTION CENTER	1,708	2,076	368	122%
PITCHESS DETENTION CENTER - EAST	926	64	-863	7%
PITCHESS DETENTION CENTER – NORTH	832	1,445	613	174%
PITCHESS DETENTION CENTER – SOUTH	844	1,379	535	163%
NORTH COUNTY CORRECTIONAL FACILITY	2,214	3,809	1,595	172%

TOTAL BSCC RATED CAPACITY*	YEARLY FACILITY ADIP	TOTAL ABOVE BSCC RATED CAPACITY	TOTAL % BSCC CAPACITY	TOTAL % BSCC CAPACITY EXCLUDING EAST FACILITY
12,537	16,464	3,927	131%	141%

\*Statistical data gathered from *Board of State and Community Corrections Inspection Report 11/2016*.



**LA County Jail Facilities**

- Men's Central Jail (MCJ)
- Twin Towers Correctional Facility (TTCF)
- Los Angeles County Medical Center (LCMC)
- Correctional Treatment Center (CTC)
- Inmate Reception Center (IRC)

Century Regional Detention Facility (CRDF)

- Pitchess Detention Center (PDC)
- PDC East Facility
- PDC North Facility
- PDC South Facility
- North County Correctional Facility (NCCF)

Mira Loma Detention Center (MLDC)

## JAIL HOUSING FACILITIES

<b>MENS CENTRAL JAIL TOTAL INMATE POPULATION</b>						
<b>2018</b>						
<b>SECURITY LEVEL</b>	<b>Quarter 1</b>	<b>Quarter 2</b>	<b>Quarter 3</b>	<b>Quarter 4</b>	<b>Yearly Average</b>	<b>% Of Population</b>
SECURITY LEVEL LOW 1-4	1,016	967	913	889	946	22%
SECURITY LEVEL MEDIUM 5-7	2,476	2,591	2,753	2,783	2,651	61%
SECURITY LEVEL HIGH 8-9	750	693	718	697	715	17%
<b>FACILITY TOTAL</b>	<b>4,242</b>	<b>4,251</b>	<b>4,384</b>	<b>4,369</b>	<b>4,312</b>	<b>100%</b>
<b>°SUBPOPULATION HOUSED THROUGHOUT FACILITY</b>						
<b>HOUSING TYPE</b>	<b>Quarter 1</b>	<b>Quarter 2</b>	<b>Quarter 3</b>	<b>Quarter 4</b>	<b>Yearly Total</b>	<b>Yearly Average</b>
*ADMINISTRATIVELY SEGREGATED INMATES (K-10)	296	314	345	147	1,102	276
> ADMINISTRATIVELY SEGREGATED INMATES (K-1)	15	13	15	17	60	15
**DISCIPLINE	35	28	20	20	103	26
GENERAL POPULATION ON PSYCHOTROPIC MEDS	742	835	817	773	3,167	792
INMATE WORKERS	944	962	942	952	3,800	950
LGBT (K-6 G) INMATES	375	337	358	378	1,448	362
MEDICAL/CLINIC	360	364	390	361	1,475	369
^OTHER (K-6T/B/C)	160	176	191	175	702	176
PRO-PER	95	81	78	75	329	82
SCHOOL HOUSING (EBI)	437	439	386	339	1,601	400
NOH (H.O.P.E.) Program	32	32	28	27	119	30
SEXUALLY VIOLENT PREDATORS	8	9	10	9	36	9
SEX CRIMES AGAINST CHILDREN (K-6 Y) INMATES	245	243	257	253	998	250
^^ DEVELOPMENTALLY DISABLED	8	14	13	15	50	13

° Sub population housed throughout facility includes those who are classified with special housing needs and are included in the total inmate population. An inmate may belong to more than one subpopulation.

\*K-10-Administratively segregated for various reasons including danger to self or others. The New Special Handle Codes, 17,18,19 were implemented in November 2018, resulting in a re-classification of the K10 Special Handle numbers.

>K-1 Law Enforcement related in custody.

^ K-6T Contempt of court, K6B threatened by others, K-6C protective custody.

\*\*Majority of discipline inmates are now housed at TTCF.

^^ Developmental Disabilities are combined with Blind/Deaf and Mental inmates. They were moved to MCJ from TTCF in January 2018.

\*\* Statistical data are averages gathered from Facility Count Sheet every Tuesday.

**TWIN TOWERS CORRECTIONAL FACILITY  
TOTAL INMATE POPULATION**

**2018**

<b>SECURITY LEVEL</b>	<b>Quarter 1</b>	<b>Quarter 2</b>	<b>Quarter 3</b>	<b>Quarter 4</b>	<b>Yearly Average</b>	<b>% Of Population</b>
SECURITY LEVEL LOW 1-4	740	642	603	591	644	19%
SECURITY LEVEL MEDIUM 5-7	2,249	2,181	2,152	2,145	2,182	64%
SECURITY LEVEL HIGH 8-9	517	544	586	602	562	17%
<b>FACILITY TOTAL</b>	<b>3,506</b>	<b>3,367</b>	<b>3,341</b>	<b>3,338</b>	<b>3,388</b>	<b>100%</b>

**°SUB POPULATION HOUSED THROUGHOUT FACILITY**

<b>HOUSING TYPE</b>	<b>Quarter 1</b>	<b>Quarter 2</b>	<b>Quarter 3</b>	<b>Quarter 4</b>	<b>Yearly Total</b>	<b>Yearly Average</b>
* ADMINISTRATIVELY SEGREGATED (K-10)	140	151	152	92	535	134
^ ADMINISTRATIVELY SEGREGATED INMATES (K-1)	3	3	2	1	9	2
**ADMINISTRATIVELY SEGREGATED INMATES (K-6B)	39	26	21	28	114	29
AMERICAN'S WITH DISABILITIES (ADA)	340	345	363	367	1,415	354
^^DEVELOPMENTALLY DISABLED	8	0	0	0	8	8
DISCIPLINE	50	42	79	79	208	52
◇ FEMALE GENERAL POPULATION	160	30	18	16	224	56
FEMALE MEDICAL (CTC)	17	18	15	13	63	16
◇ FEMALE SCHOOL HOUSING (EBI)	95	5	0	0	100	50
◇ FEMALE WORKERS	45	5	0	0	50	25
GENERAL POPULATION ON PSYCHOTROPIC MEDS SECURITY LEVEL 1-4	52	52	23	28	155	39
GENERAL POPULATION ON PSYCHOTROPIC MEDS SECURITY LEVEL 5-7	186	201	119	153	659	165
GENERAL POPULATION ON PSYCHOTROPIC MEDS SECURITY LEVEL 8-9	54	65	50	66	235	59
LGBT (K-6 G) INMATES	81	79	81	81	322	81
MALE SCHOOL HOUSING (EBI)	441	495	470	389	1,795	449
MEDICAL (CTC)	111	118	118	107	454	114
MENTALLY ILL - HIGH OBSERVATION HOUSING (HOH)	947	976	943	1,009	3,875	969
MENTALLY ILL – MODERATE OBSERVATION / SERVICE AREA (MOH)	2,364	2,333	2,453	2,481	9,631	2,408
MENTALLY ILL - MODERATE OBSERVATION HOUSING (MOH) SCHOOL HOUSING (EBI)	412	495	470	389	1,766	442
MENTALLY ILL - MODERATE OBSERVATION HOUSING (MOH) SEX CRIMES AGAINST CHILDREN (K-6 Y) INMATES	141	133	137	134	545	136

*°Sub population housed throughout facility includes those who are classified with special housing needs and are included in the total inmate population. An inmate may belong to more than one subpopulation.*

*\*K-10-Administratively segregated for various reasons including danger to self or others. The New Special Handle Codes, 17,18,19 were implemented in November 2018, resulting in a re-classification of the K10 Special Handle numbers.*

*\*\*K-6B-Administratively segregated are at risk of assault in GP housing.*

*^^Development Disable are mixed in with Blind/Deaf and Mental inmates, has moved to MCJ on 31-Jan-18*

*^Related to Law Enforcement-segregated from general population for safety reasons.*

*◇ Female workers and School Program (EBI) moved to CRDF beginning April 14, 2018.*

*\*\*\*\* ADA extended program therefore more participants beginning October, 2017.*

*\*\*\*\*\* EBI extended MOH program therefore more participants beginning October, 2017.*

*\*\*\*\*\* Statistical data are averages gathered from Facility Count Sheet every Tuesday.*



**CENTURY REGIONAL DETENTION CENTER  
TOTAL INMATE POPULATION**

**2018**

<b>SECURITY LEVEL</b>	<b>Quarter 1</b>	<b>Quarter 2</b>	<b>Quarter 3</b>	<b>Quarter 4</b>	<b>Yearly Average</b>	<b>% Of Population</b>
SECURITY LEVEL LOW 1-4	641	651	628	619	635	31%
SECURITY LEVEL MEDIUM 5-7	1,132	1,111	1,131	1,163	1,134	55%
SECURITY LEVEL HIGH 8-9	256	303	316	299	294	14%
<b>FACILITY TOTAL</b>	<b>2,029</b>	<b>2,065</b>	<b>2,075</b>	<b>2,081</b>	<b>2,063</b>	<b>100%</b>

**°SUB POPULATION HOUSED THROUGHOUT FACILITY**

<b>HOUSING TYPE</b>	<b>Quarter 1</b>	<b>Quarter 2</b>	<b>Quarter 3</b>	<b>Quarter 4</b>	<b>Yearly Total</b>	<b>Yearly Average</b>
ADMINISTRATIVE SEGRAGATED INMATES (K-10)	34	33	36	23	126	32
DISCIPLINE	23	27	33	29	112	28
INMATE WORKERS	319	336	324	321	1,300	325
MEDICAL/CLINIC	8	6	7	5	26	7
MENTALLY ILL - HIGH OBSERVATION HOUSING (HOH)	270	281	295	273	1,119	280
MENTALLY ILL - MODERATE OBSERVATION HOUSING (MOH)	275	285	294	379	1,233	308
OTHER (K-6B)	7	6	3	2	18	5
SCHOOL HOUSING (EBI)	504	511	511	501	2,027	507
SEX CRIMES AGAINST CHILDREN (K-6 Y) INMATES	6	6	6	8	26	7

*°Sub population housed throughout facility includes those who are classified with special housing needs and are included in the total inmate population.*

*An inmate may belong to more than one subpopulation*

*^K-10-Administratively segregated for various reasons including danger to self or others*

*\* Statistical data are averages gathered from Facility Count Sheet every Tuesday.*

**PITCHESS DETENTION CENTER - EAST FACILITY  
TOTAL INMATE POPULATION**

**2018**

<b>SECURITY LEVEL</b>	<b>Quarter 1</b>	<b>Quarter 2</b>	<b>Quarter 3</b>	<b>Quarter 4</b>	<b>Yearly Average</b>	<b>% Of Population</b>
SECURITY LEVEL LOW 1-4	49	40	51	52	48	75%
SECURITY LEVEL LOW 5-7	11	18	22	11	16	25%
SECURITY LEVEL LOW 8-9	0	0	0	0	0	0%
<b>FACILITY TOTAL</b>	<b>60</b>	<b>58</b>	<b>73</b>	<b>63</b>	<b>64</b>	<b>100%</b>

**°SUB POPULATION HOUSED THROUGHOUT FACILITY**

<b>HOUSING TYPE</b>	<b>Quarter 1</b>	<b>Quarter 2</b>	<b>Quarter 3</b>	<b>Quarter 4</b>	<b>Yearly Total</b>	<b>Yearly Average</b>
FIRE CAMP SECURITY LEVELS 1-4	49	40	51	52	192	48
FIRE CAMP SECURITY LEVELS 5-7	11	18	22	11	62	16

*°Sub population housed throughout facility includes those who are classified with special housing needs and are included in the total inmate population. An inmate may belong to more than one subpopulation  
\* Statistical data are averages gathered from Facility Count Sheet every Tuesday.*

**PITCHESS DETENTION CENTER - NORTH  
TOTAL INMATE POPULATION**

**2018**

<b>SECURITY LEVEL</b>	<b>Quarter 1</b>	<b>Quarter 2</b>	<b>Quarter 3</b>	<b>Quarter 4</b>	<b>Yearly Average</b>	<b>% Of Population</b>
SECURITY LEVEL LOW 1-4	255	237	213	223	232	16%
SECURITY LEVEL MEDIUM 5-7	1,150	1,155	1,166	1,180	1,163	81%
SECURITY LEVEL HIGH 8-9	47	49	55	45	49	3%
<b>FACILITY TOTAL</b>	<b>1,452</b>	<b>1,441</b>	<b>1,434</b>	<b>1,448</b>	<b>1,444</b>	<b>100%</b>

**°SUB POPULATION HOUSED THROUGHOUT FACILITY**

<b>HOUSING TYPE</b>	<b>Quarter 1</b>	<b>Quarter 2</b>	<b>Quarter 3</b>	<b>Quarter 4</b>	<b>Yearly Total</b>	<b>Yearly Average</b>
DISCIPLINE	30	25	21	24	100	25
INMATE WORKERS	89	91	92	94	366	92
SCHOOL HOUSING GP (EBI) SECURITY LEVELS 1-7	281	282	283	280	1,126	282
SCHOOL HOUSING (EBI) SECURITY LEVELS 1-7 K6Y	94	94	93	94	375	94
SEX CRIMES AGAINST CHILDREN INMATES (K-6Y) SECURITY LEVEL 1-7	283	283	280	282	1,128	282
MENTALL ILL – MODERATE OBSERVATION HOUSING (MOH)	286	294	290	301	1,171	293

*° Sub population housed throughout facility includes those who are classified with special housing needs and are included in the total inmate Population.  
An inmate may belong to more than one subpopulation  
♦Inmates housed at North Facility for disciplinary reasons  
\* Statistical data are averages gathered from Facility Count Sheet every Tuesday.*

<b>PITCHESS DETENTION CENTER - SOUTH TOTAL INMATE POPULATION</b>						
<b>2018</b>						
<b>SECURITY LEVEL</b>	<b>Quarter 1</b>	<b>Quarter 2</b>	<b>Quarter 3</b>	<b>Quarter 4</b>	<b>Yearly Average</b>	<b>% Of Population</b>
SECURITY LEVEL LOW 1-4	587	543	479	479	522	38%
SECURITY LEVEL MEDIUM 5-7	783	839	896	908	857	62%
SECURITY LEVEL HIGH 8-9	0	0	0	0	0	0%
<b>FACILITY TOTAL</b>	<b>1,370</b>	<b>1,382</b>	<b>1,375</b>	<b>1,387</b>	<b>1,379</b>	<b>100%</b>
<b>°SUB POPULATION HOUSED THROUGHOUT FACILITY</b>						
<b>HOUSING TYPE</b>	<b>Quarter 1</b>	<b>Quarter 2</b>	<b>Quarter 3</b>	<b>Quarter 4</b>	<b>Yearly Total</b>	<b>Yearly Average</b>
BACK ON TRACK SECURITY LEVEL 1-7	63	48	62	68	241	60
SCHOOL HOUSING (EBI) SECURITY LEVEL 1-7	322	402	410	393	1,527	382
INMATE WORKERS SECURITY LEVEL 1-7	489	478	471	464	1,902	476

° Sub population housed throughout facility includes those who are classified with special housing needs and are included in the total inmate population. An inmate may belong to more than one subpopulation.

\* Statistical data are averages gathered from Facility Count Sheet every Tuesday.

<b>NORTH COUNTY CORRECTIONAL FACILITY TOTAL INMATE POPULATION</b>						
<b>2018</b>						
<b>SECURITY LEVEL</b>	<b>Quarter 1</b>	<b>Quarter 2</b>	<b>Quarter 3</b>	<b>Quarter 4</b>	<b>Yearly Average</b>	<b>% Of Population</b>
SECURITY LEVEL LOW 1-4	670	591	573	604	610	16%
SECURITY LEVEL MEDIUM 5-7	2,223	2,089	2,330	2,183	2,206	58%
SECURITY LEVEL HIGH 8-9	1,086	1,094	930	821	983	26%
<b>FACILITY TOTAL</b>	<b>3,979</b>	<b>3,774</b>	<b>3,833</b>	<b>3,608</b>	<b>3,799</b>	<b>100%</b>
<b>°SUB POPULATION HOUSED THROUGHOUT FACILITY</b>						
<b>HOUSING TYPE</b>	<b>Quarter 1</b>	<b>Quarter 2</b>	<b>Quarter 3</b>	<b>Quarter 4</b>	<b>Yearly Total</b>	<b>Yearly Average</b>
ADMINISTRATIVELY SEGREGATED INMATES (K-10) SECURITY LEVEL 1-8	1	1	1	0	3	1
ADMINISTRATIVELY SEGREGATED INMATES (K-6B) SECURITY LEVEL 1-8	114	111	119	118	462	116
DISCIPLINE SECURITY LEVEL 1-7	177	176	164	168	685	171
INMATE WORKERS SECURITY LEVEL 1-7	753	716	752	743	2,964	741
MEDICAL/CLINIC SECURITY LEVEL 1-7	9	9	9	12	39	10
SCHOOL HOUSING (EBI) SECURITY LEVEL 1-8	131	128	173	184	616	154
VETERAN	59	63	61	53	236	59

° Sub population housed throughout facility includes those who are classified with special housing needs and are included in the total inmate population.

An inmate may belong to more than one subpopulation.

\* K-10-Administratively segregated for various reasons including danger to self or others

\*\* Statistical data are averages gathered from Facility Count Sheet every Tuesday

# POPULATION OVERVIEW

## INMATE POPULATION DEMOGRAPHICS

Racial demographics for 2018 indicate the three most populous racial groups within the LA County Jail for both male and female offenders are Hispanic (51%), Black (30%), and White (15%).

COMBINED	Quarter 1		Quarter 2		Quarter 3		Quarter 4		Yearly Average	Yearly %
Race	Population	%	Population	%	Population	%	Population	%		
Hispanic	8,694	51%	8,725	51%	8,710	51%	8,474	52%	8651	51%
Black	5,091	30%	5,000	29%	4,994	29%	4,975	30%	5015	30%
White	2,630	15%	2,566	16%	2,580	16%	2,533	15%	2577	15%
All Others	628	4%	599	4%	602	4%	552	3%	595	4%
Chinese	33	0%	39	0%	46	0%	47	0%	41	0%
Filipino	24	0%	24	0%	24	0%	26	0%	25	0%
Pacific Islanders	13	0%	14	0%	15	0%	16	0%	15	0%
Japanese	4	0%	2	0%	4	0%	5	0%	4	0%
American Indian	5	0%	8	0%	12	0%	18	0%	11	0%
<b>Total</b>	<b>17,121</b>	<b>100%</b>	<b>16,977</b>	<b>100%</b>	<b>16,987</b>	<b>100%</b>	<b>16,646</b>	<b>100%</b>	<b>16,933</b>	<b>100%</b>

MALE	Quarter 1		Quarter 2		Quarter 3		Quarter 4		Yearly Average	Yearly %
Race	Population	%	Population	%	Population	%	Population	%		
Hispanic	7,706	52%	7,751	52%	7,762	52%	7,526	53%	7686	52%
Black	4,414	30%	4,330	29%	4,315	29%	4,309	30%	4342	29%
White	2,161	15%	2,106	15%	2,110	15%	2,069	14%	2112	14%
All Others	535	3%	523	4%	527	4%	485	3%	518	4%
Chinese	28	0%	35	0%	39	0%	41	0%	36	0%
Filipino	19	0%	22	0%	23	0%	23	0%	22	0%
Pacific Islanders	12	0%	13	0%	15	0%	14	0%	14	0%
Japanese	3	0%	1	0%	3	0%	4	0%	3	0%
American Indian	5	0%	7	0%	12	0%	17	0%	10	0%
<b>Total</b>	<b>14,882</b>	<b>100%</b>	<b>14,788</b>	<b>100%</b>	<b>14,806</b>	<b>100%</b>	<b>14,488</b>	<b>100%</b>	<b>14,741</b>	<b>100%</b>

FEMALE	Quarter 1		Quarter 2		Quarter 3		Quarter 4		Yearly Average	Yearly %
Race	Population	%	Population	%	Population	%	Population	%		
Hispanic	988	44%	974	44%	949	43%	948	44%	965	44%
Black	678	31%	670	31%	678	32%	666	31%	673	31%
White	469	21%	461	21%	470	22%	464	22%	466	21%
All Others	93	4%	76	4%	75	3%	67	3%	78	4%
Chinese	5	0%	4	0%	7	0%	6	0%	6	0%
Filipino	5	0%	2	0%	2	0%	3	0%	3	0%
Pacific Islanders	1	0%	2	0%	0	0%	2	0%	1	0%
Japanese	1	0%	1	0%	1	0%	1	0%	1	0%
American Indian	0	0%	1	0%	0	0%	1	0%	1	0%
<b>Total</b>	<b>2,239</b>	<b>100%</b>	<b>2,191</b>	<b>100%</b>	<b>2,182</b>	<b>100%</b>	<b>2,158</b>	<b>100%</b>	<b>2,193</b>	<b>100%</b>

\*Statistical data are averages gathered from *Custody Division Daily Briefing Report* every Tuesday.

## INMATE POPULATION OFFENDER AGE GROUPS

The 26-34 year old cohort was the most frequently represented age group within the jail population for 2018, followed by the 18-25 year old cohort.

COMBINED	Quarter 1		Quarter 2		Quarter 3		Quarter 4		Yearly Average	Yearly %
	Age Group	Population	%	Population	%	Population	%	Population		
18 to 25	4,159	24%	4,076	24%	4,029	24%	3,879	23%	4,036	24%
26 to 34	5,718	33%	5,678	34%	5,645	33%	5,648	34%	5,672	33%
35 to 39	2,371	14%	2,353	14%	2,347	14%	2,257	14%	2,332	14%
40 to 44	1,499	9%	1,539	9%	1,560	9%	1,552	9%	1,538	9%
45 & Older	3,374	20%	3,331	20%	3,406	20%	3,311	20%	3,356	20%
<b>Total</b>	<b>17,121</b>	<b>100%</b>	<b>16,977</b>	<b>100%</b>	<b>16,987</b>	<b>100%</b>	<b>16,646</b>	<b>100%</b>	<b>16,933</b>	<b>100%</b>

MALE	Quarter 1		Quarter 2		Quarter 3		Quarter 4		Yearly Average	Yearly %
	Age Group	Population	%	Population	%	Population	%	Population		
18 to 25	3,648	25%	3,583	24%	3,546	24%	3,398	24%	3,544	24%
26 to 34	4,883	32%	4,886	33%	4,847	33%	4,861	34%	4,869	33%
35 to 39	2,074	14%	2,047	14%	2,039	14%	1,930	13%	2,023	14%
40 to 44	1,308	9%	1,342	9%	1,375	9%	1,362	9%	1,347	9%
45 & Older	2,970	20%	2,930	20%	2,999	20%	2,937	20%	2,959	20%
<b>Total</b>	<b>14,882</b>	<b>100%</b>	<b>14,788</b>	<b>100%</b>	<b>14,806</b>	<b>100%</b>	<b>14,488</b>	<b>100%</b>	<b>14,741</b>	<b>100%</b>

FEMALE	Quarter 1		Quarter 2		Quarter 3		Quarter 4		Yearly Average	Yearly %
	Age Group	Population	%	Population	%	Population	%	Population		
18 to 25	511	23%	493	23%	483	22%	480	23%	492	22%
26 to 34	835	37%	792	36%	798	36%	787	36%	803	37%
35 to 39	297	13%	307	14%	308	14%	327	15%	310	14%
40 to 44	191	9%	198	9%	186	9%	190	9%	191	9%
45 & Older	404	18%	401	18%	407	19%	374	17%	397	18%
<b>Total</b>	<b>2,239</b>	<b>100%</b>	<b>2,191</b>	<b>100%</b>	<b>2,182</b>	<b>100%</b>	<b>2,158</b>	<b>100%</b>	<b>2,193</b>	<b>100%</b>

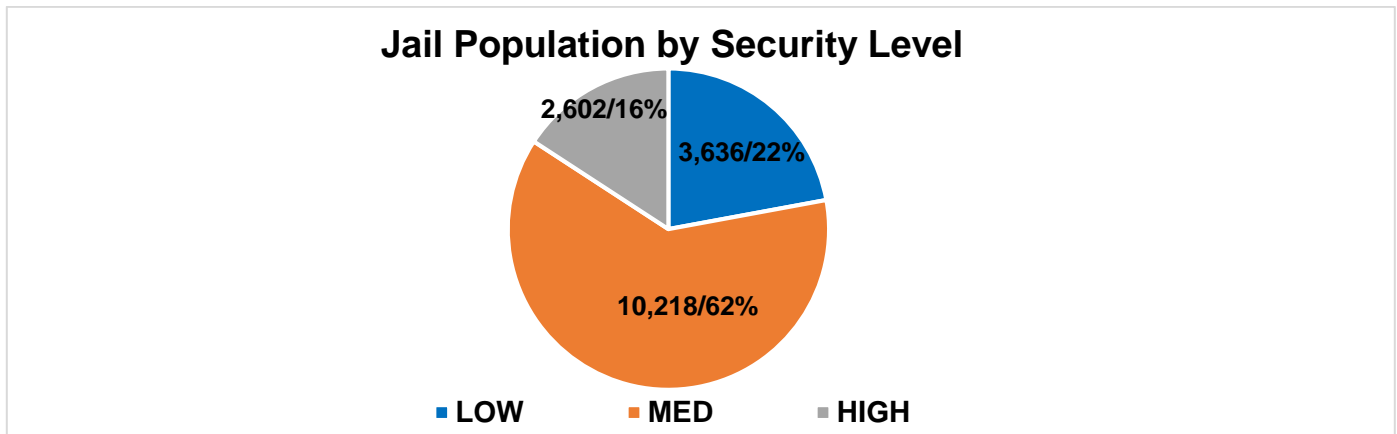
\*Statistical data are averages gathered from *Custody Division Daily Briefing Report* every Tuesday.

## CLASSIFICATION AND RE-CLASSIFICATION

The Department utilizes the Northpointe Classification system to assign security levels to inmates. The security levels guide where an inmate will be housed based on their individual risk for in-custody misconduct. Lower security housing areas offer more programming and privileges to better prepare the inmates for release. Higher security housing is more restricted and therefore limited in what programs are offered, due to potential risk of serious misconduct and/or escape by the high security level inmate population.

<b>*Jail Population by Security Level</b>				
Quarter	Low	Medium	High	Total
1	3,957	10,035	2,657	16,649
2	3,671	10,002	2,683	16,355
3	3,460	10,453	2,605	16,518
4	3,456	10,383	2,463	16,302
<b>Average</b>	<b>3,636</b>	<b>10,218</b>	<b>2,602</b>	<b>16,456</b>
<b>Percent</b>	<b>22%</b>	<b>62%</b>	<b>16%</b>	<b>100%</b>

\*K-10 (Ad-Seg) inmates are re-evaluated for reclassification of security level during the re-class process which occurs every 45 days. This chart only includes inmates housed in LASD Type II facilities. Does not include inmates housed in alternative custody beds.



The pie graph above depicts the average number of inmates housed in 2018 by security level. The percentage is calculated to the Facility ADIP for 2018 (16,456).

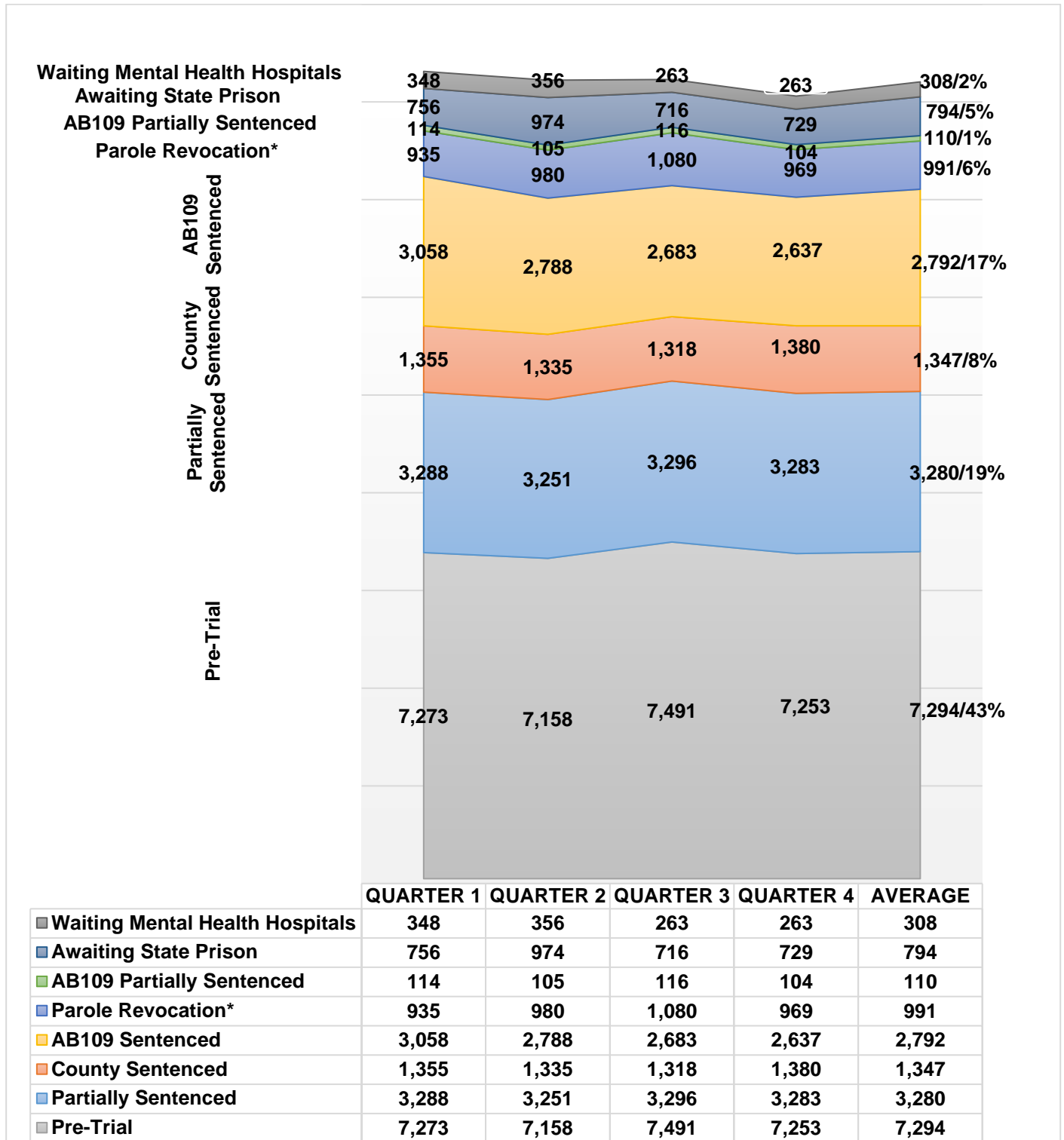
## RE-CLASSIFICATION STATISTICS

Inmates are periodically reclassified (approximately every 45 days) to determine if their security level is still appropriate or should be reduced or increased based upon their conduct.

Quarter	ADIP	Disciplinary	Inmate Request	Legal Status	Other	Periodic	Sentence	Staff	TOTALS	% of ADIP
1	17,120	829	2	13	1	5,500	694	55	7,094	41%
2	16,948	661	3	10	2	5,603	797	63	7,138	42%
3	16,964	602	2	15	4	5,206	1,539	59	7,428	44%
4	16,608	582	7	12	4	5,376	1,110	28	7,118	43%
<b>Total</b>		<b>2,674</b>	<b>14</b>	<b>50</b>	<b>11</b>	<b>21,685</b>	<b>4,140</b>	<b>205</b>	<b>28,779</b>	
<b>Average</b>		<b>669</b>	<b>4</b>	<b>13</b>	<b>3</b>	<b>5,421</b>	<b>1,035</b>	<b>51</b>	<b>7,195</b>	

## INMATE POPULATION BREAKDOWN

The inmate population consists of various categories of inmates in broad groupings, including: pre-trial, traditional county sentenced, AB 109 sentenced, AB109 sentenced with additional charges, parole/revocation violators, and those awaiting transfer to State prison.



\* Parole Revocation includes PRCS Revocation 3455, Flash Incarceration 3455 and Inmates with a 3056 hold.

\*\* It should be noted that an inmate who is sentence status 1 (often referred to as "pretrial") could be in trial, or even completed trial, but is just not fully sentenced. Most inmates in sentence status 1 will be pretrial.



## **INMATE POPULATION BREAKDOWN CONTINUED**

- **AWAITING STATE PRISON**
  - During 2018, an average of 794 inmates were awaiting transfer to state prison, some while pending trial on other cases.
  
- **AB109 PAROLE AND PROBATION VIOLATORS**
  - An average of 991 AB109 inmates were in custody for violating their parole or probation.
  
- **AB109 SENTENCED**
  - An average of 2,792 inmates were in custody, sentenced under AB109.
  
- **TRADITIONAL COUNTY SENTENCED INMATE POPULATION**
  - The average daily count for the traditional county sentenced (TCS) population was 1,347, approximately 8% of the inmate population.
  
- **PRE-TRIAL INMATE POPULATION\***
  - During 2018, there were approximately 109,706 new bookings into the County jail. Forty-three percent (43%) of the average daily inmate population (16,910) was comprised of inmates who were pre-trial. Pre-trial inmates are those who have an open case and have not been sentenced by the courts.

*\* It should be noted that an inmate who is sentence status 1 (often referred to as "pretrial") could be in trial, or even completed trial, but is just not fully sentenced. Most inmates in sentence status 1 will be pretrial.*

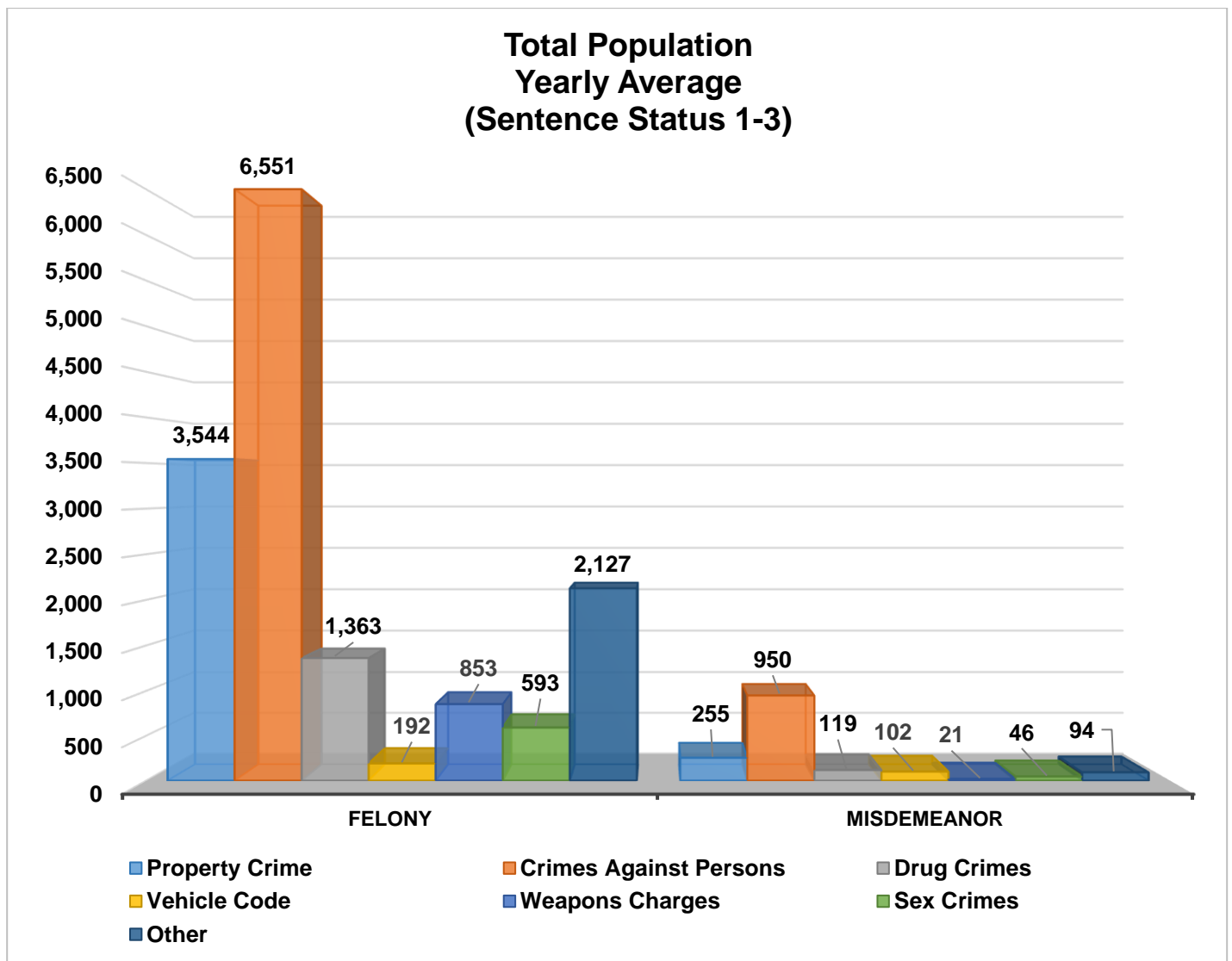
## CRIME CLASSIFICATION STATISTICS

The chart below provides an average breakdown for the entire inmate population, both sentenced and un-sentenced, by arrest category.

Population (Sentence Status 1-3)

Arrest Category	Property Crime	Crimes Against Persons	Drug Crimes	Vehicle Code	Weapons Charges	Sex Crimes	Other	Total	Percentage of the Population
<b>Felony</b>	3,544	6,551	1,363	192	853	593	2,127	15,223	91%
<b>Misdemeanor</b>	255	950	119	102	21	46	94	1,586	9%
<b>Total</b>	3,799	7,501	1,482	294	874	639	2,221	16,809	100%

*\*Information contained is based on a snapshot of the daily inmate population purge every Tuesday.*



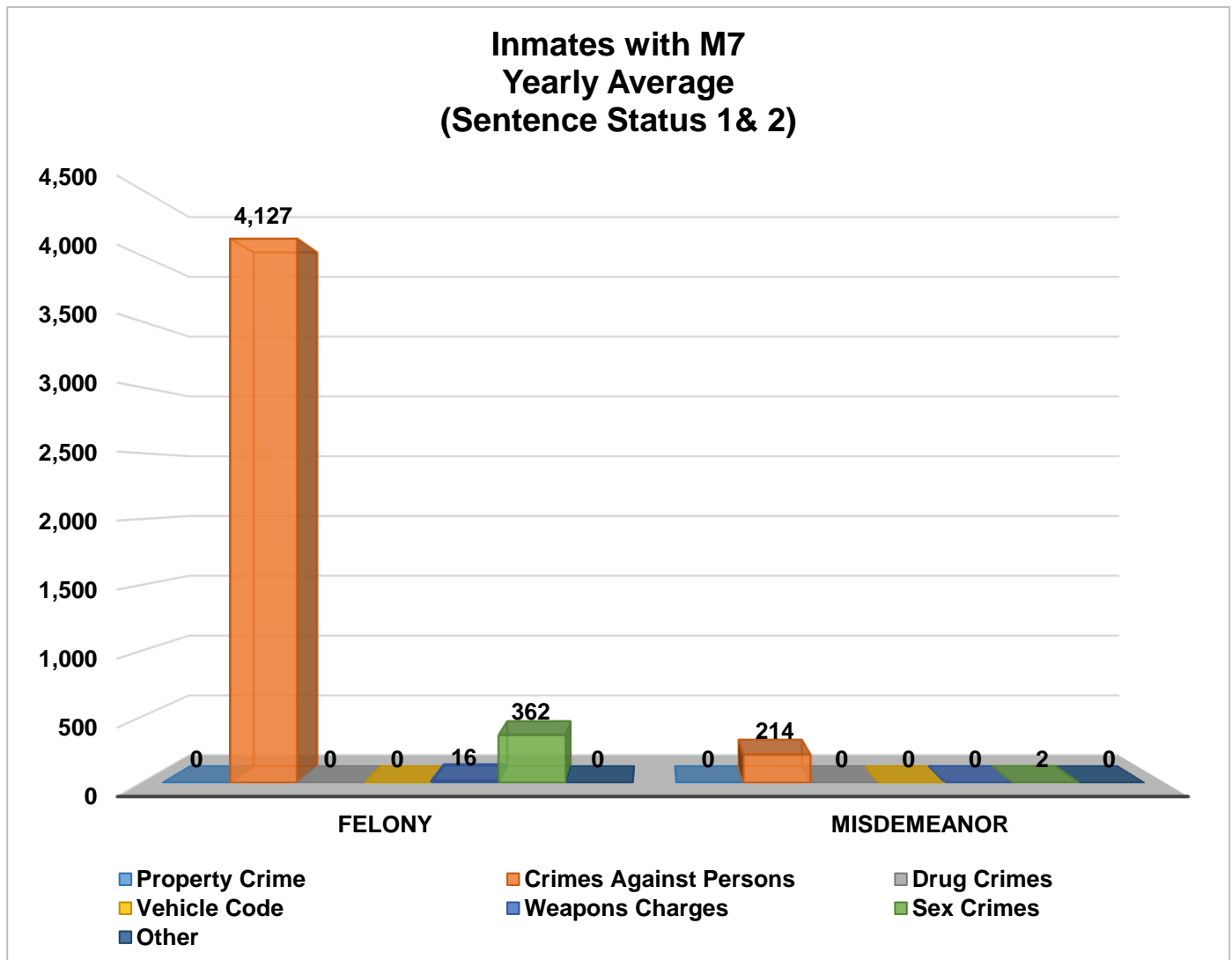
## INMATES WITH ASSAULTIVE/VIOLENT CHARGES (M7)

The chart below provides a breakdown for the inmate population with M7 charges, sentence status one and two, by arrest category.

Inmates with Assaultive/Violent Charges (M7) (Sentence Status 1 & 2)

Arrest Category	Property Crime	Crimes Against Persons	Drug Crimes	Vehicle Code	Weapons Charges	Sex Crimes	Other	Total	Percentage of the pre-trial and partially sentenced population
Felony	0	4,127	0	0	16	362	0	4,505	95%
Misdemeanor	0	214	0	0	0	2	0	216	5%
<b>Total</b>	<b>0</b>	<b>4,341</b>	<b>0</b>	<b>0</b>	<b>16</b>	<b>364</b>	<b>0</b>	<b>4,721</b>	<b>100%</b>

\* Information contained is based on a snapshot of the daily inmate population purge every Tuesday.

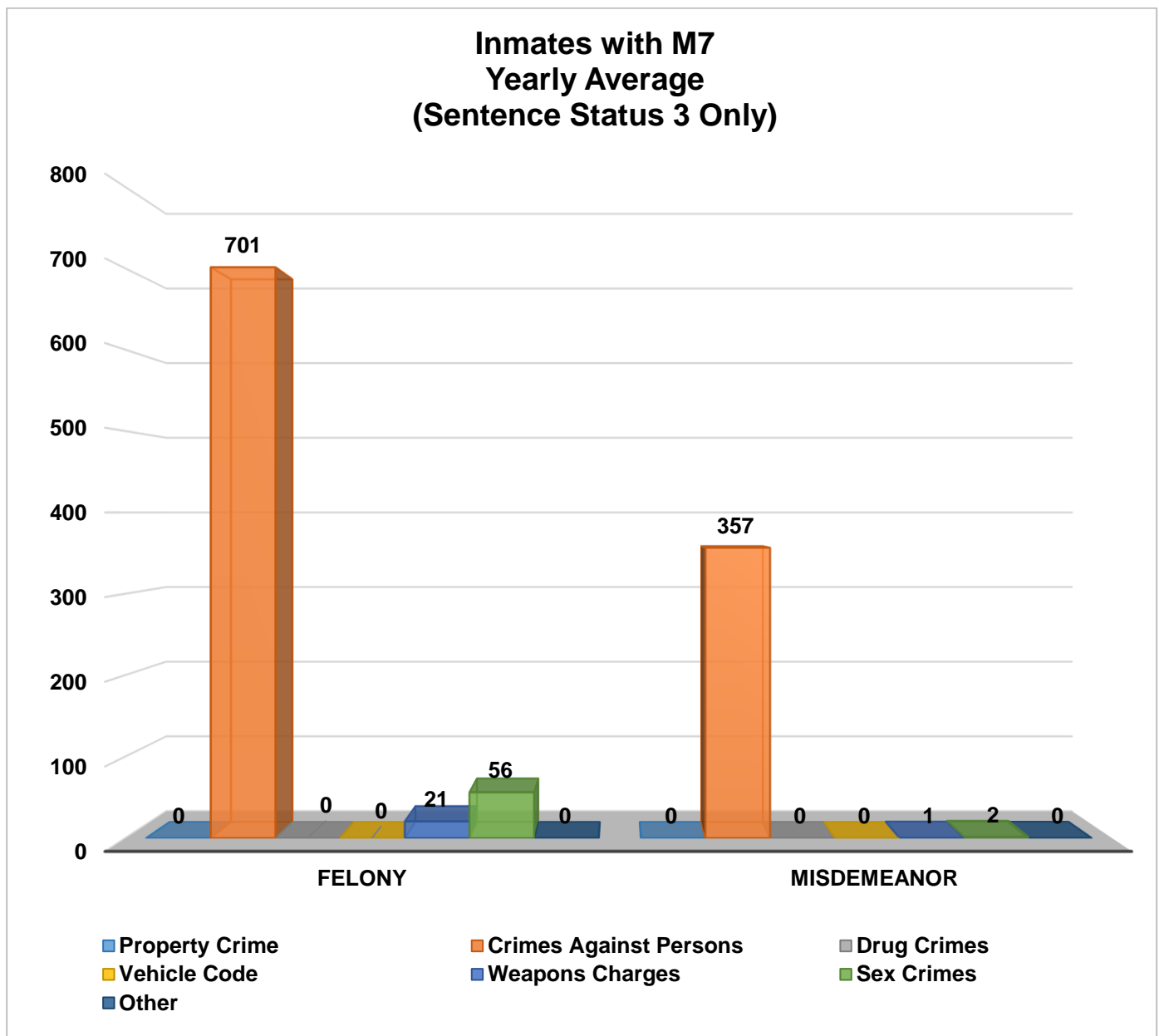


## INMATES WITH ASSAULTIVE/VIOLENT CHARGES (M7) CONTINUES

Inmates with Assaultive/Violent Charges (M7) (Sentence Status 3 Only)

Arrest Category	Property Crime	Crimes Against Persons	Drug Crimes	Vehicle Code	Weapons Charges	Sex Crimes	Other	Total	Percentage of the sentenced population
Felony	0	701	0	0	21	56	0	778	68%
Misdemeanor	0	357	0	0	1	2	0	360	32%
<b>Total</b>	<b>0</b>	<b>1,058</b>	<b>0</b>	<b>0</b>	<b>22</b>	<b>58</b>	<b>0</b>	<b>1,138</b>	<b>100%</b>

\* Information contained is based on a snapshot of the daily inmate population purge every Tuesday.



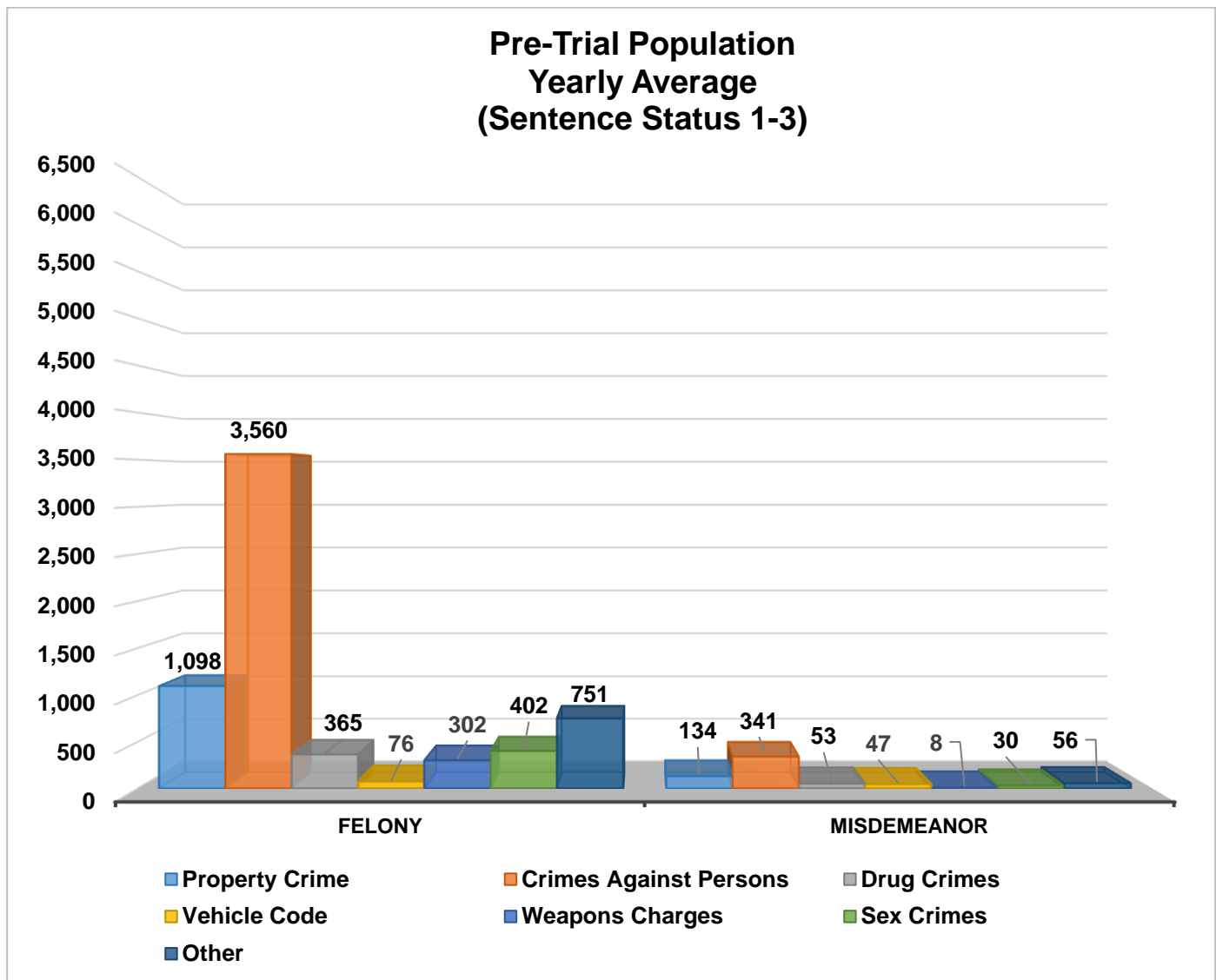
## PRE – TRIAL POPULATION

The chart below provides a breakdown for the pre-trial inmate population who are awaiting court disposition.

Pre-trial Population (Sentence Status 1 only)

Arrest Category	Property Crime	Crimes Against Persons	Drug Crimes	Vehicle Code	Weapons Charges	Sex Crimes	Other	Total	Percentage of the pre-trial Population
<b>Felony</b>	1,098	3,560	365	76	302	402	751	6,554	91%
<b>Misdemeanor</b>	134	341	53	47	8	30	56	669	9%
<b>Total</b>	1,232	3,901	418	123	310	432	807	7,223	100%

Information contained is based on a snapshot of the daily inmate population purge every Tuesday.



\* It should be noted that an inmate who is sentence status 1 (often referred to as "pretrial") could be in trial, or even completed trial, but is just not fully sentenced. Most inmates in sentence status 1 will be pretrial.

## PRE – TRIAL MISDEMEANOR POPULATION

The chart below provides a breakdown for the pre-trial inmate population, incarcerated for a misdemeanor, who have not yet been convicted. “Holds” indicates the inmates are being held on a matter pending from an outside agency.

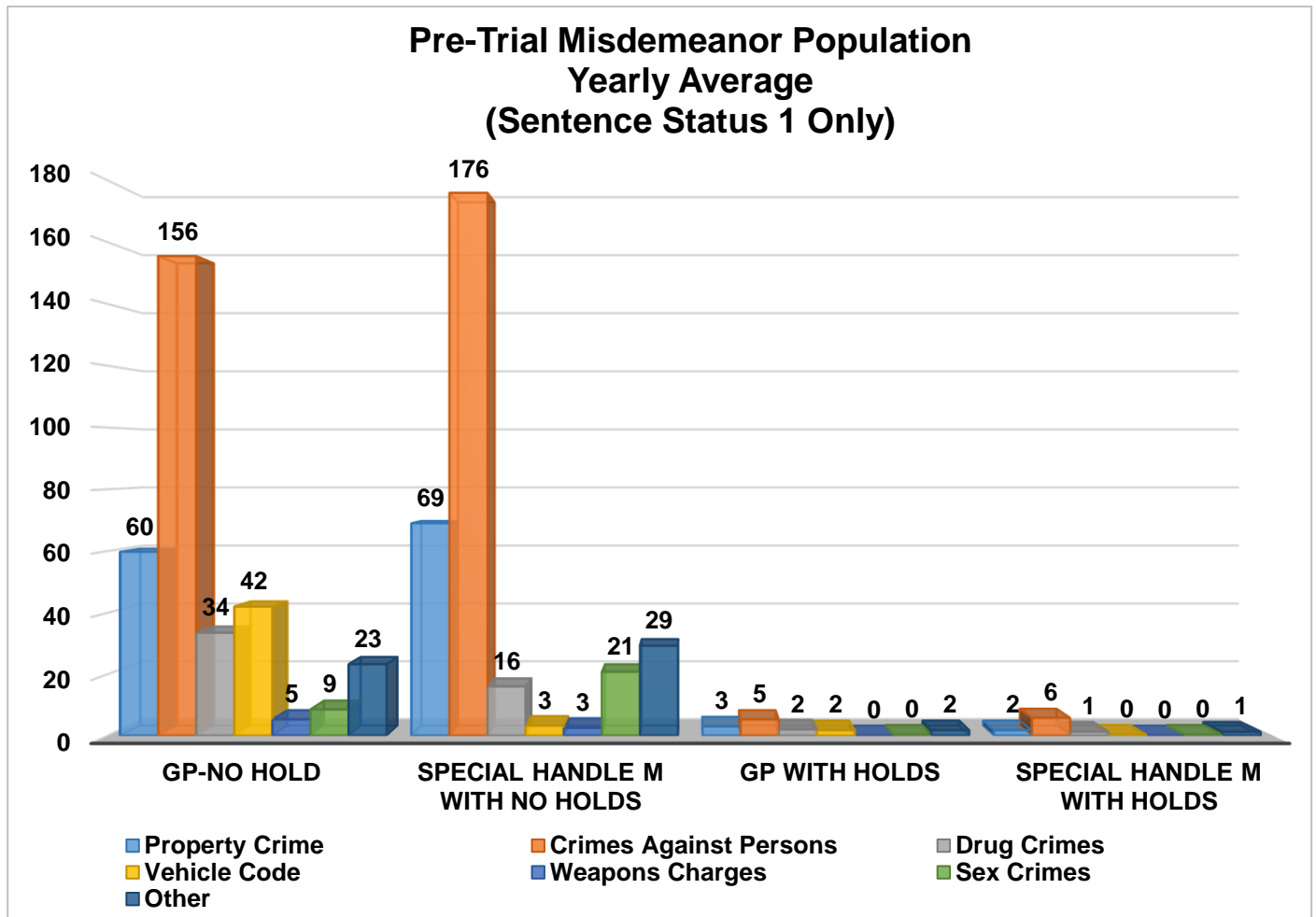
Pre-trial Misdemeanor Population (Sentence Status 1 only)

Arrest Category	Property Crime	Crimes Against Persons	Drug Crimes	Vehicle Code	Weapons Charges	Sex Crimes	Other	Total	Percentage of the pre-trial Population
*GP No Hold	60	156	34	42	5	9	23	329	49%
°Special Handle M with No Holds	69	176	16	3	3	21	29	317	47%
GP with Holds	3	5	2	2	0	0	2	14	2%
Special Handle M with Holds	2	6	1	0	0	0	1	10	2%
<b>Total</b>	<b>134</b>	<b>343</b>	<b>53</b>	<b>47</b>	<b>8</b>	<b>30</b>	<b>55</b>	<b>670</b>	<b>100%</b>

\*\*“GP” indicates General Population.

°Special Handle “M” indicates inmates in Mental Health housing.

\*Information contained is based on a snapshot of the daily inmate population purge every Tuesday.



\* It should be noted that an inmate who is sentence status 1 (often referred to as “pretrial”) could be in trial, or even completed trial, but is just not fully sentenced. Most inmates in sentence status 1 will be pretrial.

## PRE-TRIAL BAIL HOLDS

The numbers below represent the average number of inmates in LASD custody eligible for bail with the noted bail amounts.

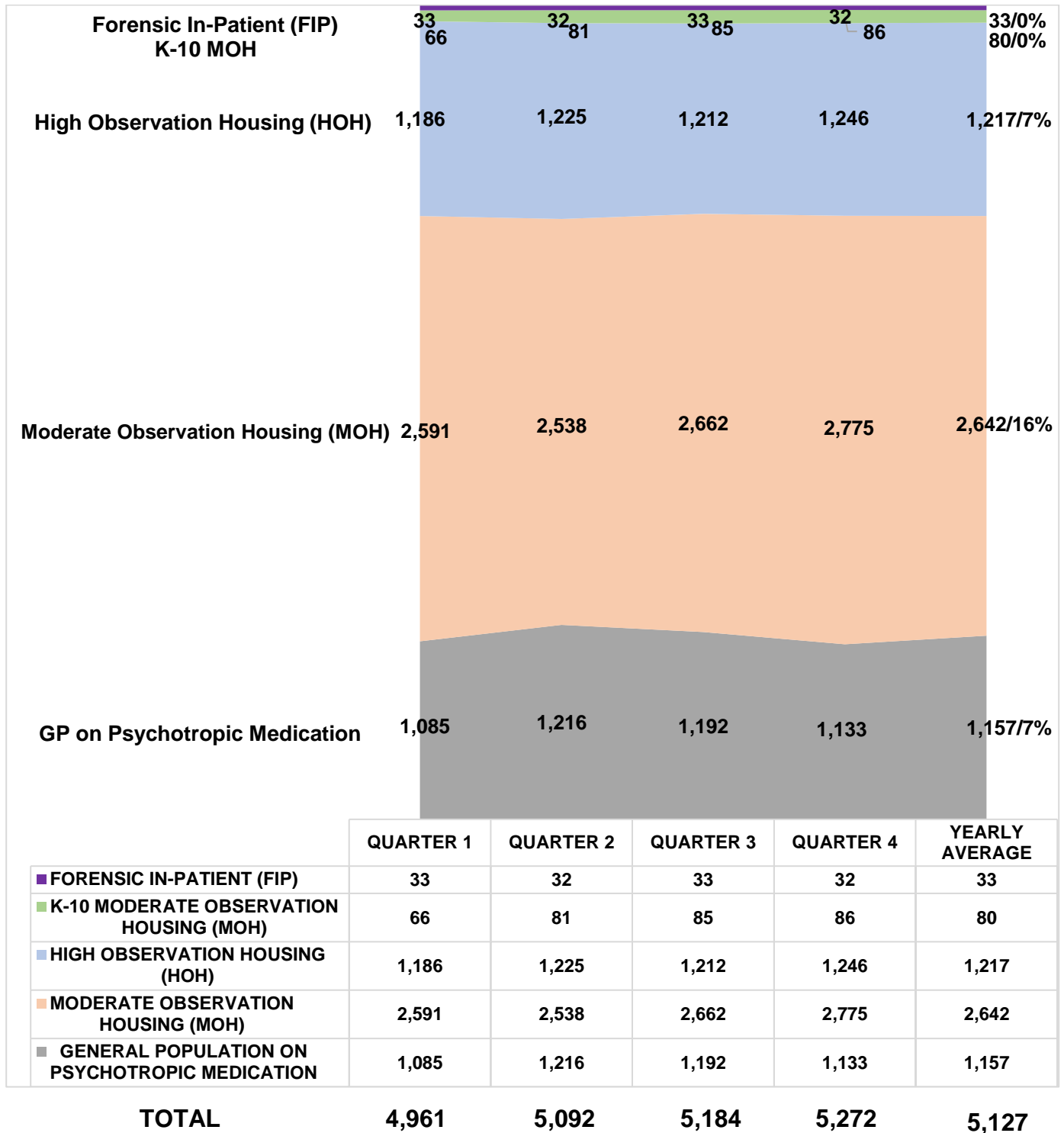
Sentence Status 1	Quarter 1				Quarter 2				Quarter 3				Quarter 4			
	With Hold	No Hold	Total	%	With Hold	No Hold	Total	%	With Hold	No Hold	Total	%	With Hold	No Hold	Total	%
<b>\$1 - \$25,000</b>	14	232	247	3%	15	234	249	3%	16	256	272	4%	15	227	242	3%
<b>\$25,001 - \$26,000</b>	3	38	41	1%	4	42	46	1%	3	31	34	0%	1	22	23	0%
<b>\$26,001 - \$50,000</b>	28	568	596	8%	29	587	616	9%	30	620	650	9%	26	605	631	9%
<b>\$50,001 - \$100,000</b>	39	784	823	11%	38	744	782	11%	34	834	868	12%	36	799	835	12%
<b>\$100,001 - \$500,000</b>	76	1,318	1,393	19%	72	1,249	1,321	19%	76	1,269	1,345	18%	64	1,273	1,337	19%
<b>\$500,001 - \$1 Million</b>	62	1,417	1,479	20%	69	1,392	1,461	21%	70	1,378	1,448	19%	63	1,355	1,418	20%
<b>No Bail</b>	404	2,282	2,685	37%	405	2,241	2,646	37%	470	2,358	2,828	38%	447	2,273	2,720	38%
<b>Total</b>	<b>625</b>	<b>6,638</b>	<b>7,264</b>	<b>100%</b>	<b>632</b>	<b>6,489</b>	<b>7,121</b>	<b>100%</b>	<b>699</b>	<b>6,746</b>	<b>7,445</b>	<b>100%</b>	<b>652</b>	<b>6,554</b>	<b>7,206</b>	<b>100%</b>

\* The bail reflected is not necessarily the bail at the time of arrest. Once remanded by the court, the bail may change.

\* Information encompassed in this report/document depicts data related to a specific date and time. Data may differ based on numerous factors related to an inmate's status, disposition, facility, etc. Information may differ based on systems queried, archived information, date/time parameters or numerous other factors. Information in disparate reports should not be combined as data sets may be inconsistent in queries and responses.

## MENTAL HEALTH INMATE POPULATION

In 2018, the average inmate population was 16,910; the mental health population accounted for 30 percent of this population. Currently, inmates identified with Mental Health needs requiring specialized housing moderate or high observation housing, account for 23 percent of the overall population. The remaining 7 percent of the total population have been treated and continue to receive psychotropic medication while housed in general population.



\*Information contained is based on a snapshot of the daily inmate population purge every Tuesday.



## MISDEMEANOR INCOMPETENT TO STAND TRIAL (MIST)

The Los Angeles County Jail houses inmates who are awaiting trial for misdemeanor charges who have been found to be incompetent to stand trial. This year the average number of inmates on MIST is 227.

Misdemeanor Incompetent to Stand Trial (MIST)														
Quarter 1			Quarter 2			Quarter 3			Quarter 4			Yearly Average		
Male	Female	Total	Male	Female	Total	Male	Female	Total	Male	Female	Total	Male	Female	Total
164	73	237	155	62	217	162	64	226	164	66	230	161	66	227

## AMERICANS WITH DISABILITIES ACT (ADA)

The Americans with Disabilities Act (ADA) housing is used to accommodate inmates with mobility limitations and/or physical disabilities. This year the average number of inmates requiring ADA is 451.\*

Americans With Disabilities Act (ADA)					
Housing Area	Quarter 1	Quarter 2	Quarter 3	Quarter 4	Yearly Average
Central Regional Detention Center^	*	*	*	34	34
Twin Towers	340	345	363	262	328
Men's Central Jail	90	89	84	81	86
LAC/USC Medical Center^	*	*	*	3	3
<b>Yearly Total</b>	<b>430</b>	<b>434</b>	<b>447</b>	<b>380</b>	<b>451</b>

\* Data is based on special handle codes from October, 2018.

\*\* Beginning January, 2018, TTCF added Module 272, and MCJ added Modules 7100 & 7200 for ADA inmates.

^ Data collected beginning from October, 2018.

\*\*\* Information contained is based on a snapshot of the daily inmate population purge every Tuesday.

## MEDICAL HOUSING

Medical Outpatient/ Specialty Housing (MOSH) is provided to inmates who require a level of medical treatment beyond that of stabilized medication distribution (pill call). The MOSH area in MCJ is also used to house inmates with mobility issues.

ADDITIONAL MEDICAL HOUSING -- NOT ADA DESIGNATED					
Housing Area	Quarter 1	Quarter 2	Quarter 3	Quarter 4	Yearly Average
Correctional Treatment Center (CTC)	111	118	118	107	114
Los Angeles County Medical Center (LCMC)	17	18	15	18	17
*MCJ Medical/Clinic	360	364	390	361	369
<b>Yearly Total</b>	<b>488</b>	<b>500</b>	<b>523</b>	<b>486</b>	<b>500</b>

\* Information is based on a snapshot of the daily inmate population purge every Tuesday.

# **IN-CUSTODY PROGRAMS**

## **INMATE IN-CUSTODY PROGRAMS**

The County Jail offers several in-custody programs. Programs vary from a number of in-custody work assignments, vocational job training, education, and life skill classes, as well as fire camp training and California Department of California Rehabilitative fire camp placement for AB109 inmates. Various programs award sentenced inmates additional time credits for their participation pursuant to the California Penal Code:

### **PROGRAM CREDIT EARNINGS**

<b>Program</b>	<b>Penal Code</b>	<b>Credit Earned</b>	<b>Type of Inmate</b>
Sentenced GT/WT	4019 PC	Day-for-Day (1:1)	All Sentenced Inmates
Conservation	4019.1 PC	One and one half-for One (1.5:1)	All Sentenced Inmates
Fire Camp	4019.2 PC	Two-for-One (2:1)	AB109 Sentenced Inmates
Milestone	4019.4 PC	Up to 6 weeks per year	AB109 Sentenced Inmates

## **CONSERVATION WORK PROGRAM (CWP)**

The Conservation Work Program (CWP) allows inmates to complete their adjusted sentence while working in various job classifications, giving them the skills and work discipline necessary to increase their chances of success once released. Effective January 2015, all sentenced offenders, including Traditional County Sentenced (TCS) inmates are eligible to receive credits pursuant to Penal Code Section 4019.1. In 2018, approximately 2,483 offenders (15% of the population) participated in CWP.

<b>CONSERVATION WORK PROGRAM (CWP)</b>					
<b>INMATE TYPE</b>	<b>Quarter 1</b>	<b>Quarter 2</b>	<b>Quarter 3</b>	<b>Quarter 4</b>	<b>Yearly Average</b>
INMATES PARTICIPATED IN PROGRAMS	2,605	2,430	2,403	2,495	2,483

*\*Information contained is based on a snapshot of the daily inmate population purge every Tuesday.*

## **EDUCATION BASED INCARCERATION PROGRAMS (EBI-MILESTONE)**

The Education Based Incarceration Program (EBI) uses traditional and nontraditional education which is designed to reduce incarceration by increasing the educational, civic, social, economic, and life skills of its participants. Offenders who are sentenced are eligible to receive credits pursuant to Penal Code 4019.4. In 2018, a total of **2,897** Milestone credits were awarded.

## **FIRE CAMP TRAINING PROGRAM**

Fire Camp Training and California Institute for Women (CIW/CSCR) training are aligned under the Conservation Work Program (CWP). This program is the first step of training before an inmate may participate in a State facilitated Fire Camp Program. Offenders who are sentenced under AB109 are eligible to receive credits pursuant to Penal Code 4019.1. The average number of inmates enrolled in the Fire Camp training program for 2018 was 66.

<b>FIRE CAMP TRAINING CAMP</b>					
<b>HOUSING TYPE</b>	<b>Quarter 1</b>	<b>Quarter 2</b>	<b>Quarter 3</b>	<b>Quarter 4</b>	<b>Yearly Average</b>
PDC FIRE CAMP TRAINING (MEN)	61	59	71	64	<b>64</b>
CIW FIRE TRAINING (WOMEN)	0	3	3	3	<b>2</b>
<b>TOTAL</b>	<b>61</b>	<b>62</b>	<b>74</b>	<b>67</b>	<b>66</b>

## **CALIFORNIA DEPARTMENT OF CORRECTIONS AND REHABILITATION (CDCR) FIRE CAMP PROGRAM**

Once an inmate passes all necessary requirements in the Fire Camp Training Program located at PDC East facility, they are transferred to one of five state contracted fire camp sites where they will serve the remainder of their adjusted sentence. Offenders who are sentenced under AB109 are eligible to receive credits pursuant to Penal Code 4019.2. The average number of inmates assigned to CDCR Fire Camps for 2018 was 66.

<b>CDCR FIRE CAMP</b>					
<b>FIRE CAMP LOCATION</b>	<b>Quarter 1</b>	<b>Quarter 2</b>	<b>Quarter 3</b>	<b>Quarter 4</b>	<b>Yearly Average</b>
ACTON FIRE CAMP	11	9	8	11	<b>10</b>
FRANCISQUITO FIRE CAMP	14	11	10	9	<b>11</b>
HOLTON FIRE CAMP	33	39	37	25	<b>34</b>
JULIUS KLEIN FIRE CAMP	12	11	6	7	<b>9</b>
MALIBU WOMENS FIRE CAMP	5	1	2	0	<b>2</b>
<b>TOTAL</b>	<b>75</b>	<b>71</b>	<b>63</b>	<b>52</b>	<b>66</b>

## BACK ON TRACK PROGRAM

The Back on Track (BOT) program began in February 2015 and is overseen by EBI staff. The program delivers education and comprehensive reentry services to offenders before and after a participant is released from jail. The program focuses on the critical time following an inmate's release from jail, by providing the seamless reentry services vital for success, including employment and life skill services. This program is available to inmates who have been sentenced under AB109 and are eligible to receive Milestone credits. They must be enrolled in the program for 18 months—divided into 9 months in-custody and 9 months out-of-custody.

<b>BACK ON TRACK</b>	<b>Quarter 1</b>	<b>Quarter 2</b>	<b>Quarter 3</b>	<b>Quarter 4</b>	<b>Yearly Average</b>
SOUTH BARRACK	63	48	62	56	57

## In-Custody S.T.A.R.T

The jail based START treatment services began at CRDF in February 2016 providing substance use disorder (SUD) treatment services to 50 women on any given day. In May of 2017, the program expanded to treat up to 124 women. In May 2017 services began at MCJ for up to 90 gay and transgender inmates and at PDC South facility treating up to 200 men in general population on any given day. Treatment services include screening, clinical assessment, group and individual counseling, case management services, medication assisted treatment, re-entry planning and care coordination with CTU and transportation to community based services post release.

<b>In-Custody S.T.A.R.T (CRDF)</b>	<b>Quarter 1</b>	<b>Quarter 2</b>	<b>Quarter 3</b>	<b>Quarter 4</b>	<b>Yearly Average</b>
Enrolled	124	90	87	76	94
Completed	35	39	25	17	29

<b>In-Custody S.T.A.R.T (MCJ)</b>	<b>Quarter 1</b>	<b>Quarter 2</b>	<b>Quarter 3</b>	<b>Quarter 4</b>	<b>Yearly Average</b>
Enrolled	64	66	66	68	66
Completed	14	16	14	22	17

<b>In-Custody S.T.A.R.T (PDC)</b>	<b>Quarter 1</b>	<b>Quarter 2</b>	<b>Quarter 3</b>	<b>Quarter 4</b>	<b>Yearly Average</b>
Enrolled	141	235	259	188	206
Completed	23	28	29	26	27

<b>In-Custody S.T.A.R.T (TTCF)</b>	<b>Quarter 1</b>	<b>Quarter 2</b>	<b>Quarter 3</b>	<b>Quarter 4</b>	<b>Yearly Average</b>
Enrolled	*	57	54	55	55
Completed	*	9	20	9	13

\*Services at TTCF began in March 2018.

# **ALTERNATIVES TO CUSTODY PROGRAMS**

## **ALTERNATIVES TO CUSTODY PROGRAMS**

The Community Transition Unit (CTU), the Community Based Alternatives to Custody Unit (CBAC), and the Compliance Team work together by utilizing a variety of alternatives to custody programming options in an effort to enhance an inmate's chance of success upon release. These programs are conducted in collaboration with local agencies including Community and Faith Based Organizations, Department of Mental Health (DMH), Department of Public Health (DPH), and other organizations. It is the Department's goal to program inmates from intake through re-entry into the community. With this approach, we hope to increase public safety and reduce the rate of recidivism.

Supported by release planning overseen by the CTU, and in partnership with contracted services, inmates are provided re-entry assistance through linkages to services that are initiated while they are in-custody and continue upon release. Through the Alternatives to Custody (ATC) programs, qualifying inmates are afforded the opportunity to complete the remaining portion of their sentence in a community treatment program. Inmates who do not qualify for ATC due to security or other reasons are referred to community providers for re-entry assistance.

The ATC programs include:

### **Substance Treatment and Reentry Transition (S.T.A.R.T)**

The Substance Treatment and Re-entry Transition (START) program is a Department Public Health, Substance Abuse Prevention Control (SAPC) funded program that places eligible male and female inmates into residential substance use disorder (SUD) treatment programs on electronic GPS monitoring as an alternative to custody (ATC) program.

### **Community Grant Beds**

The Community Grant beds are funded through community grants. They work directly with various residential programs approved by LASD, but not affiliated with the START program, and they offer treatment beds for inmates under the ATC program. Several programs cater to specific clientele who fit a specified demographic in regards to age and gender.

### **Veteran's Administration (VA)**

The Veteran's Administration (VA) funds SUD residential treatment, under the ATC program for inmates who are confirmed to be a veteran entitled to VA Benefits. The treatment programs are approved by the VA and are vetted by LASD.

## Transitional Case Management Program (TCM)

The Transitional Case Management Program (TCM) is a Department of Public Health (DPH) funded program, through which DPH employees refer HIV infected inmates to a residential SUD treatment facility. The TCM facilities are approved and vetted by LASD under the ATC program.

### TARZANA TREATMENT CENTER DMH/SUD PROGRAM

Tarzana Treatment Center, in partnership with LASD, DHS Correctional Health, and the Department of Mental Health, has made available 40 total beds for inmates with a co-occurring mild to moderate mental health diagnosis, and a substance use disorder (SUD). Inmates are identified by DHS Jail Linkage staff and referred to Tarzana treatment for assessment and acceptance. Inmates must still qualify for ATC programming through a validated risk assessment and criminal history review.

### MENTAL HEALTH DIVERSION – NORMANDIE VILLAGE/GATEWAY

Normandie Village treats eligible male N3 inmates with mental illness who are a low security risk, and in a stabilized condition. They are selected to complete the remaining 60-180 days of their sentence in a 42 bed community-based IMD Step-down facility.

For acceptance into program, inmates must volunteer to participate in services and meet the following criteria:

1. Be 18-54 years of age
2. Must have a primary Axis I major psychiatric diagnosis
3. May have a secondary Axis I diagnosis of substance abuse
4. Must not be a registered sex offender
5. Must not have a fire setting history
6. Must be ambulatory
7. Must not have a serious or life-threatening medical problem
8. Must not require treatment in a locked setting
9. Must have applied for SSI

Program Yearly Stats	Enrolled				Completed				Returned to Custody				Absconded			
	Q1	Q2	Q3	Q4	Q1	Q2	Q3	Q4	Q1	Q2	Q3	Q4	Q1	Q2	Q3	Q4
START	45	27	17	13	28	38	17	13	3	5	6	3	2	0	0	2
Community Grant Beds	5	2	2	0	1	3	1	0	1	1	1	0	0	0	0	0
Veterans	1	0	1	1	0	1	0	0	0	0	0	1	0	0	0	0
Transitional Case Management	1	0	0	1	1	1	0	0	0	0	0	0	0	0	0	0
Tarzana TC DMH/SUD	2	0	0	0	3	0	0	0	0	0	0	0	1	0	0	0
Normandie Village DMH	3	2	1	0	4	3	1	1	0	0	0	0	0	0	0	0
<b>Quarterly Total</b>	<b>57</b>	<b>31</b>	<b>21</b>	<b>15</b>	<b>37</b>	<b>46</b>	<b>19</b>	<b>14</b>	<b>4</b>	<b>6</b>	<b>7</b>	<b>4</b>	<b>3</b>	<b>0</b>	<b>0</b>	<b>2</b>
<b>Annually Total</b>	<b>124</b>				<b>116</b>				<b>21</b>				<b>5</b>			



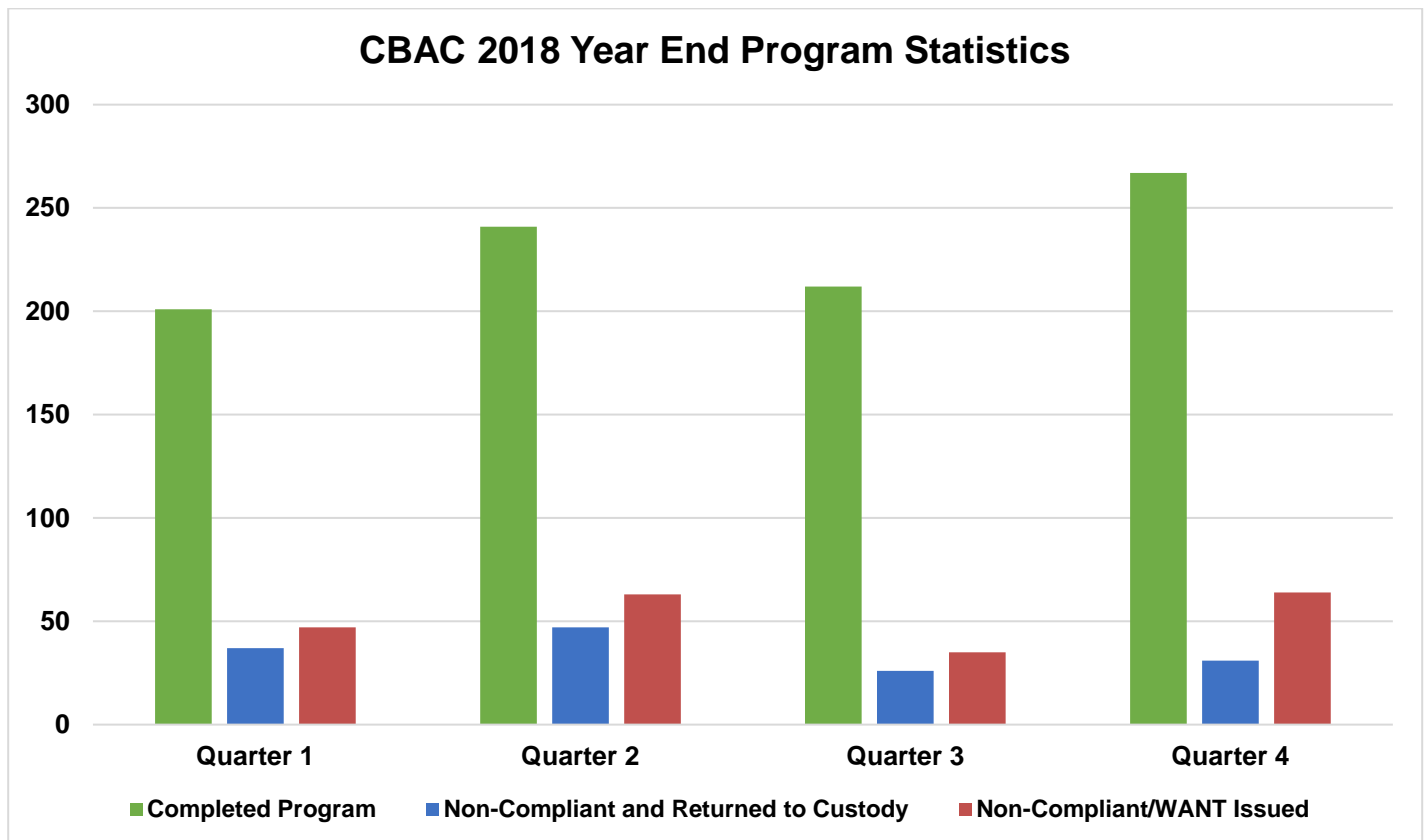
## COMMUNITY BASED ALTERNATIVES TO CUSTODY (CBAC)

The PMB's CBAC unit identifies low risk sentenced offenders within the jail population who qualify to finish their remaining sentence in an out-of-custody alternative environment. Although these individuals are outside of traditional custody, they are still under the jurisdiction of the Department.

### CBAC YEARLY PLACEMENT

PROGRAM	Quarter 1			Quarter 2			Quarter 3			Quarter 4		
	MALE	FEMALE	TOTAL	MALE	FEMALE	TOTAL	MALE	FEMALE	TOTAL	MALE	FEMALE	TOTAL
ELECTRONIC MONITORING	72	26	98	99	18	117	45	12	57	51	10	61
WEEKENDER WORK	59	4	63	80	3	83	74	3	77	63	0	63
*WORK RELEASE	114	32	146	121	22	143	91	41	132	88	24	112
<b>TOTAL</b>	<b>245</b>	<b>62</b>	<b>307</b>	<b>300</b>	<b>43</b>	<b>343</b>	<b>210</b>	<b>56</b>	<b>266</b>	<b>202</b>	<b>34</b>	<b>236</b>

The graph below depicts the total number of offenders who successfully completed the remainder of their sentence on a CBAC program. It also shows the number of offenders who failed to complete the program and with the efforts of the PMB Compliance Unit, were returned back to finish their sentence and those who failed to complete the program and were not returned back to custody.



# **RE - ENTRY ASSISTANCE**

## COMMUNITY RE-ENTRY AND RESOURCE CENTER (CRRC)

The information below are recently released inmates and inquiries and/or contacts made by members of the general public who have been assisted with services at the CRRC for 2018:

Inquiry Demographic Population	Quarter 1	Quarter 2	Quarter 3	Quarter 4	Total	Average
General Release	1,183	1,018	1,007	761	3,969	992
General Public	388	333	355	368	1,444	361
Alternative to Custody Program	16	8	5	8	37	9
Coordinated Release	82	92	151	189	514	129
Work Release	45	25	11	5	86	22
Phone Referral	0	1	0	0	1	0
<b>Total</b>	<b>1,714</b>	<b>1,477</b>	<b>1,529</b>	<b>1,331</b>	<b>6,051</b>	<b>1,513</b>

Inquiry Demographic Gender	Quarter 1	Quarter 2	Quarter 3	Quarter 4	Total	Average
Male	1,469	1,309	1,287	1,110	5,175	1,294
Female	322	260	283	251	1,116	279
<b>Total</b>	<b>1,791</b>	<b>1,569</b>	<b>1,570</b>	<b>1,361</b>	<b>6,291</b>	<b>1,573</b>

CTU personnel visit the Inmate Reception Center release area to educate and remind inmates waiting to go home about services available at the CRRC. Walks of the release area are performed every 90 minutes.

	Quarter 1	Quarter 2	Quarter 3	Quarter 4	Total	Average
Number of 90 Minute Contact Walks	250	227	195	200	872	218
Number of Inmates Contacted	4,454	3,703	4,647	5,155	17,959	4,490
Number of Flyers Distributed	3,674	3,214	4,222	4,622	15,732	3,933

*\*Statistical table provided by CTU.*

## CTU COORDINATED RELEASES TO VARIOUS PROGRAMS

The final 90 days leading to an inmate's release from custody are the most critical in ensuring a successful transition from Custody to Community Based Organization (CBO) Treatment Centers. During the time leading up to their release, inmates are interviewed several times by the CBO Staff and members of the Community Transition Unit to ensure that they are matched up with a suitable treatment provider.

The coordinated release process helps to create a trust between law enforcement, inmate participants, and CBO's. The CTU's ultimate goal is to provide a successful recovery and re-entry into the community and to ultimately decrease recidivism.

	Quarter 1	Quarter 2	Quarter 3	Quarter 4	Average
Coordinated Releases	433	412	368	407	405

## CTU VITAL RECORDS

Through the Vital Records Program, Department staff members have been deputized by the County Registrar-Recorder to facilitate birth certificate applications for inmates born in Los Angeles County, who have requested a certified copy. The fee of \$28 for certified copies of birth certificates is funded by the Inmate Welfare Fund.

All inmates in custody are eligible to apply for a California ID Card. The issued ID's are provided to the inmates upon their release. The inmates must still report to the DMV to obtain a driver license following their release.

Records Processed	Quarter 1	Quarter 2	Quarter 3	Quarter 4	Average
DMV - California Identification Card	963	797	826	850	859
RECORDS – Birth Certificate	950	1,324	1,292	1,240	1,202
<b>Total</b>	<b>1,913</b>	<b>2,121</b>	<b>2,118</b>	<b>2,090</b>	<b>2,061</b>

Records Issued	Quarter 1	Quarter 2	Quarter 3	Quarter 4	Average
DMV - California Identification Card	306	669	416	405	449
RECORDS – Birth Certificate	383	948	895	704	733
<b>Total</b>	<b>689</b>	<b>1,617</b>	<b>1,311</b>	<b>1,109</b>	<b>1,182</b>