

The background of the slide is a stylized American flag. The top half features a dark blue field with white stars, while the bottom half shows the red and white stripes of the flag. A white horizontal band is centered across the middle, containing the main text.

# **Redistricting – 2021 Prisoner Gerrymandering and Racial Bloc Voting**

**By Kimball Brace  
Election Data Services, Inc.  
November 29, 2021**

# **Today's Discussion**

## **Prisoner Gerrymandering Issue**

- 1. Update on Prisoner/ACI information from last meeting**
- 2. Racial Bloc Voting Analysis**
  - Presentation by Dr. Lisa Handley**
- 3. What's ahead**
  - Thursday – State House meeting**
    - First Drafts of plan concepts**



## Years before Good Time Release

	All Inmates		Geocoded Inmates	
Not Yet Sentenced	630	24%	398	21%
Under 1	626	24%	487	25%
1 to 2	396	15%	324	17%
3 to 5	265	10%	226	12%
6 to 9	172	7%	131	7%
10 or Over	244	9%	183	9%
Never	270	10%	178	9%
Undetermined	15	1%		
<b>TOTAL</b>	<b>2618</b>		<b>1927</b>	

The background of the slide is a stylized, semi-transparent American flag. The stars are visible in the upper left and right areas, while the stripes are visible in the lower right area. The colors are muted and the overall effect is a soft, patriotic backdrop.

# **Update on Prisoner/ACI information**

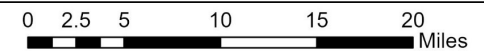
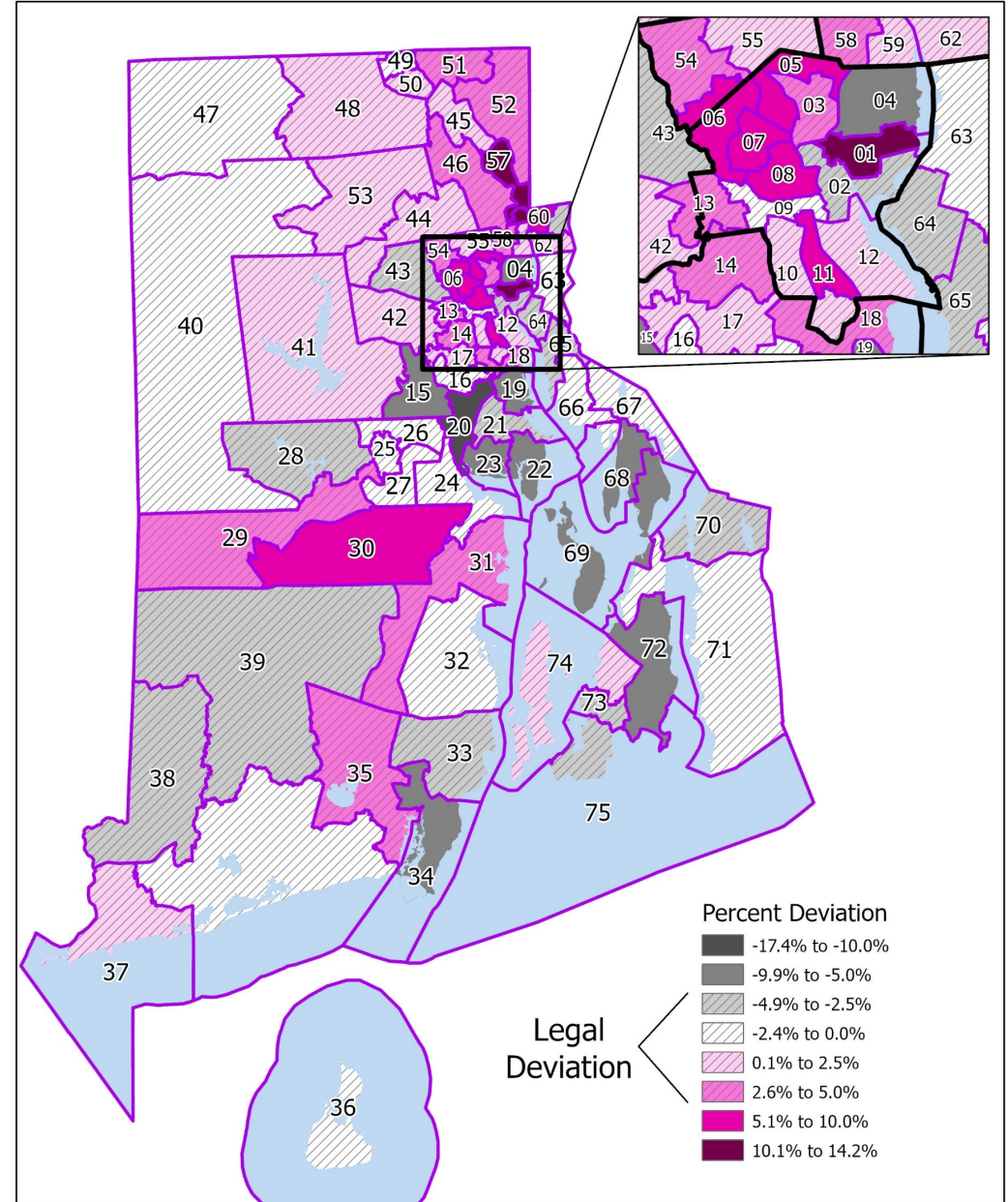
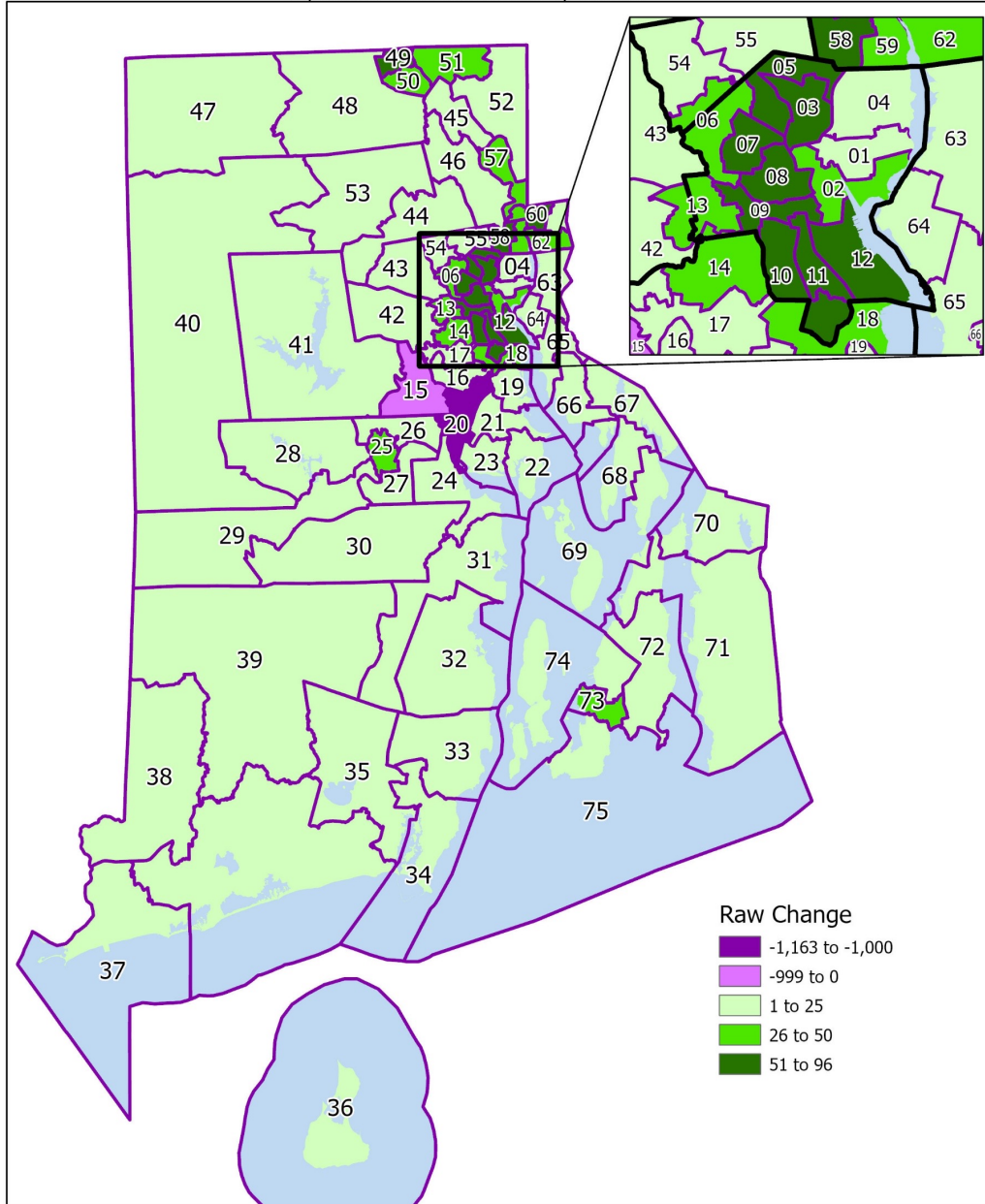


# Rhode Island State House Districts

Prisoner Allocation Effects

Population Gains and Losses by District

Updated Deviation from District Target Population

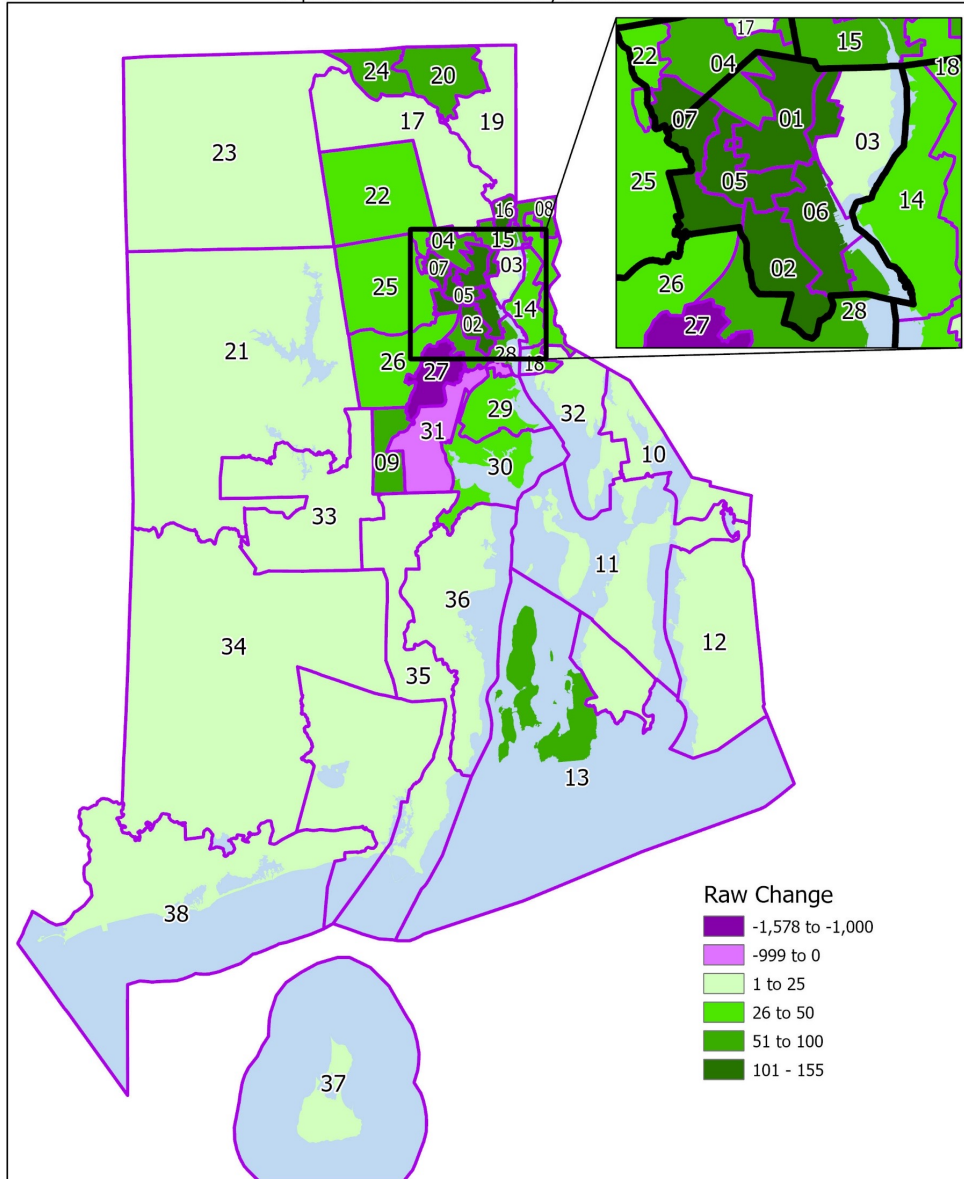




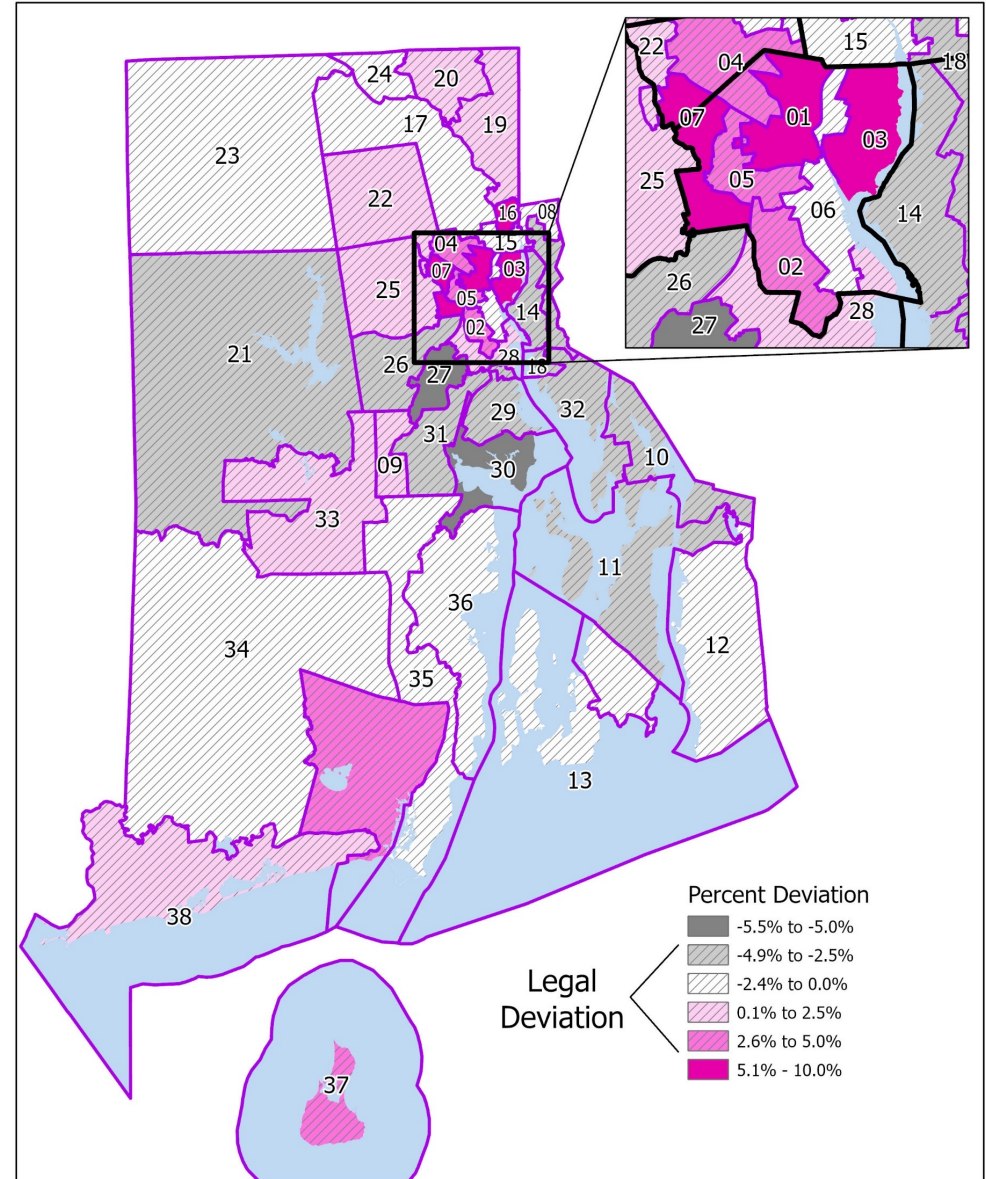
# Rhode Island State Senate Districts

Prisoner Allocation Effects

Population Gains and Losses by District



Updated Deviation from District Target Population



***Thank you***



**Kimball Brace  
President**

***Election Data Services, Inc.***

**6171 Emerywood Court**

**Manassas, VA 20112**

**(703-580-7267 or 202-789-2004)**

**[KBrace@electiondataservices.com](mailto:KBrace@electiondataservices.com) or  
[KBrace@aol.com](mailto:KBrace@aol.com)**

**[www.electiondataservices.com](http://www.electiondataservices.com)**